

UltraPower Li Ion Direct current power module (DCPM) pcb exchange process description

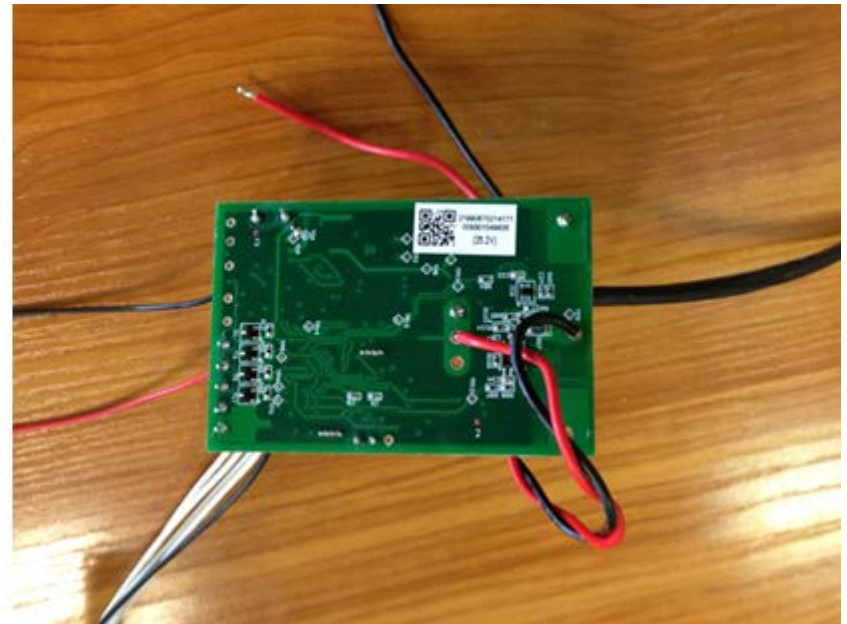
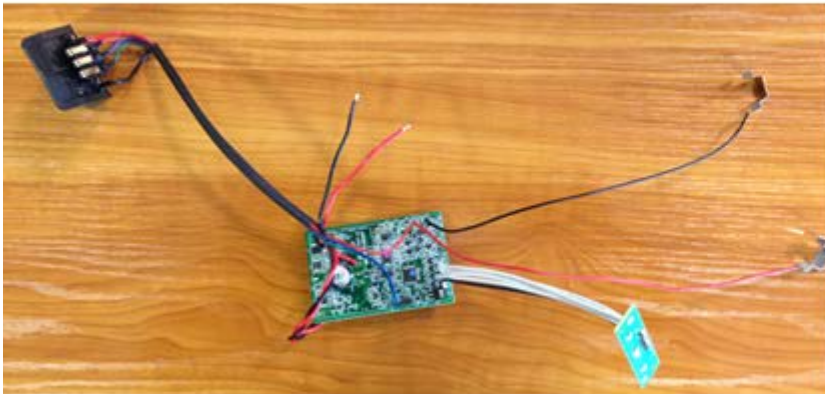
FC HUV, 06-2014

Thinking of you
 **Electrolux**

UPO DCPM exchange

The new variant of DCPM PCB are available only without connectors both for running production and for spare parts, but with wiring preassembled to the pcb.

To be able to exchange the DCPM PCB you need to understand and follow the process, described on the following slides.



UPO DCPM exchange

Thinking of you
Electrolux

1. Remove the fixing tape from the body



2. Remove the cyclone with ejector



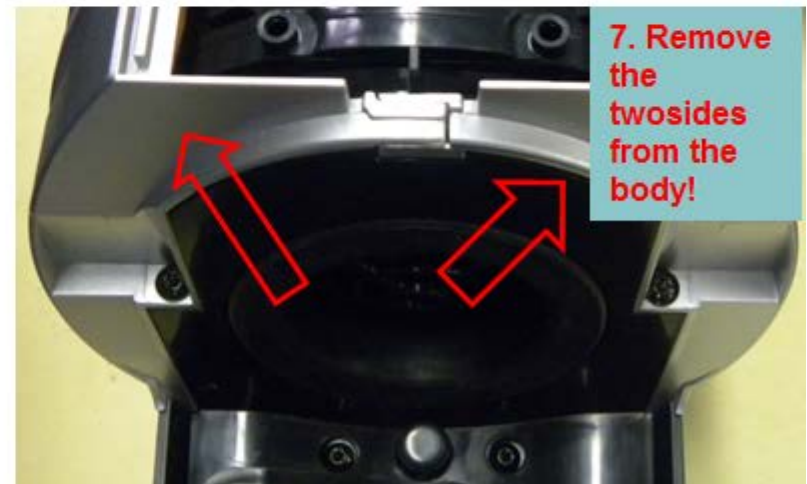
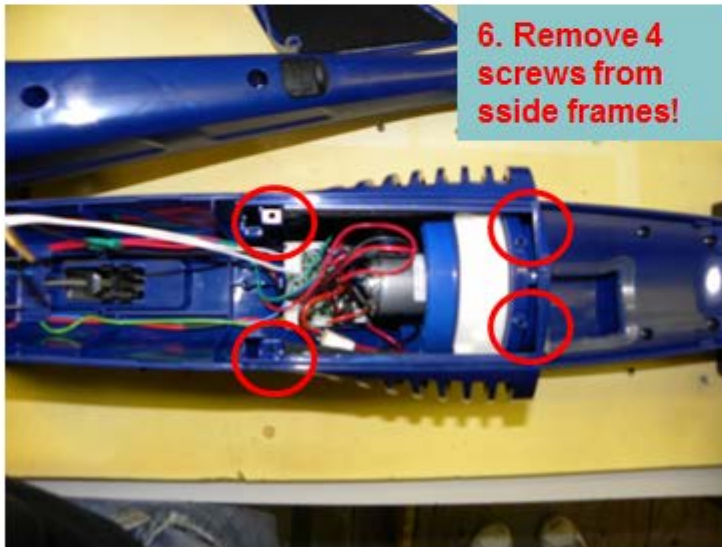
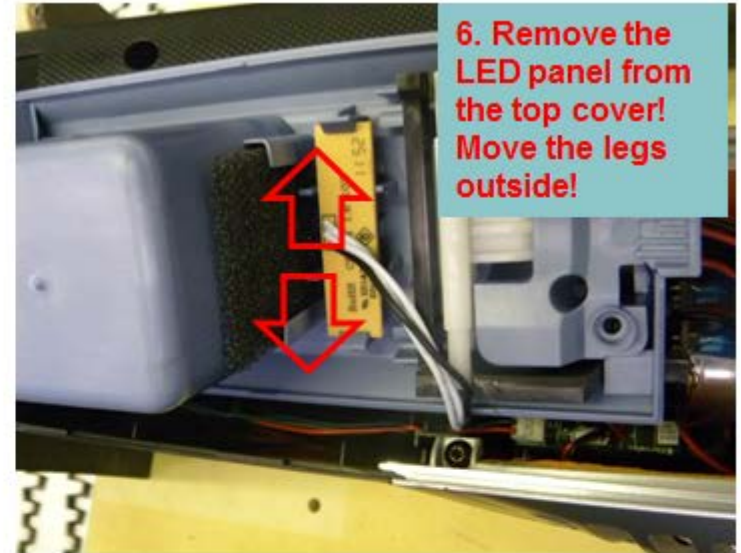
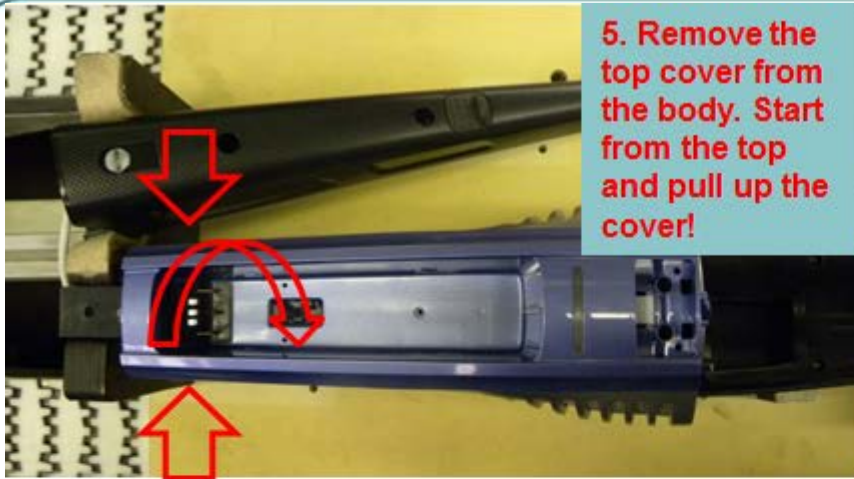
3. Remove the ejector. Small pin could help to remove the bottom across the holes.



4. Remove 5 screws from the top cover.

UPO DCPM exchange

Thinking of you
Electrolux



UPO DCPM exchange

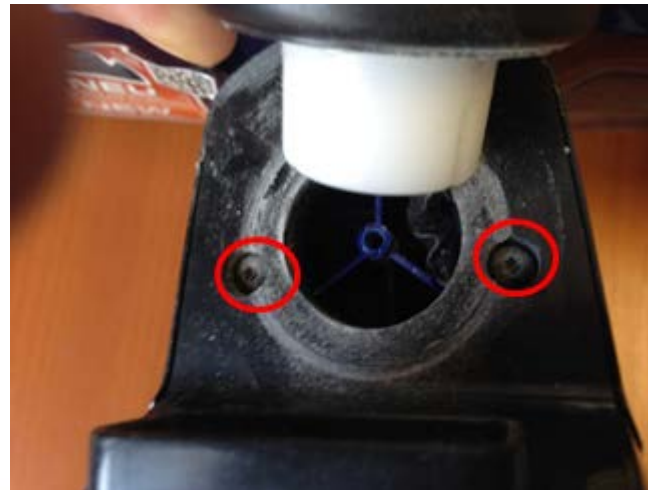
Thinking of you
Electrolux



Remove the 6 screws that holds the air channel!



Remove the screw from locking ring!

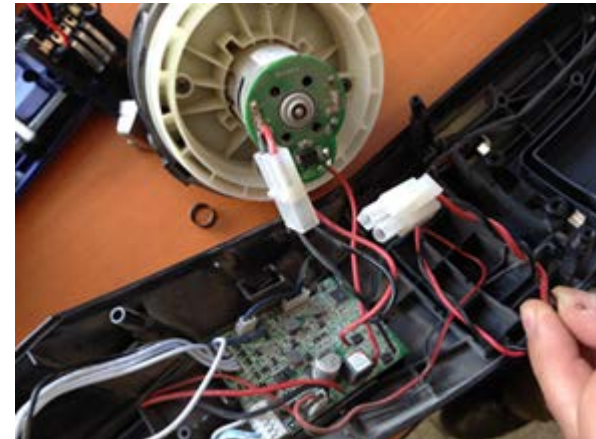


Remove the screws under locking ring!

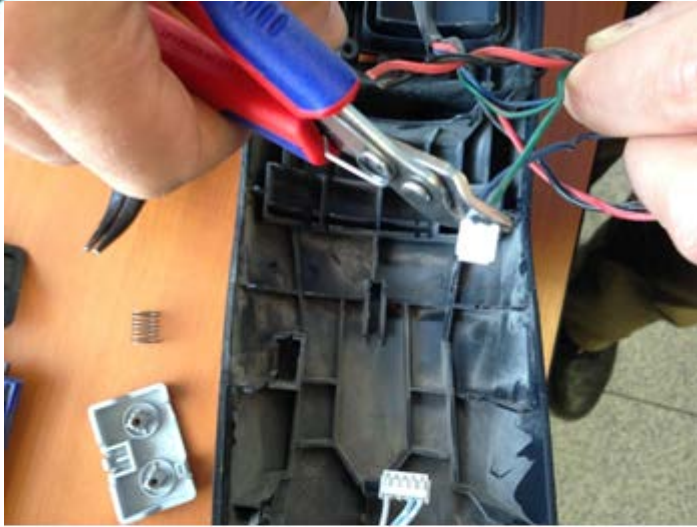
UPO DCPM exchange



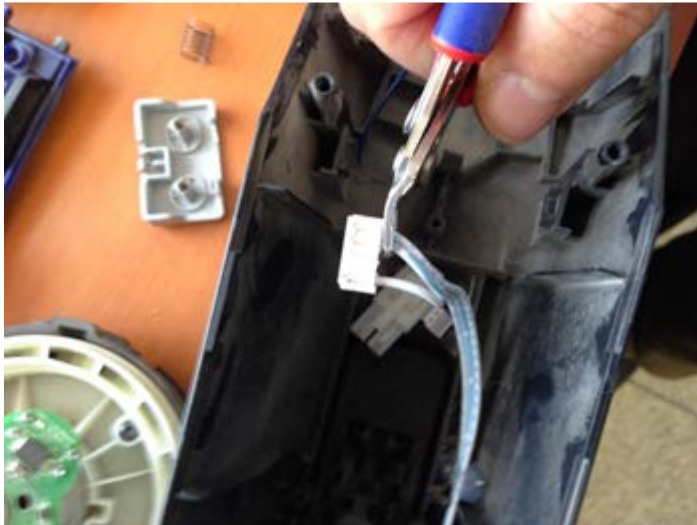
After taking off air channel and nozzle loosen, take out the MFU. Now all the wiring are available for disconnection. Disconnect wires and take off the DCPM PCB.



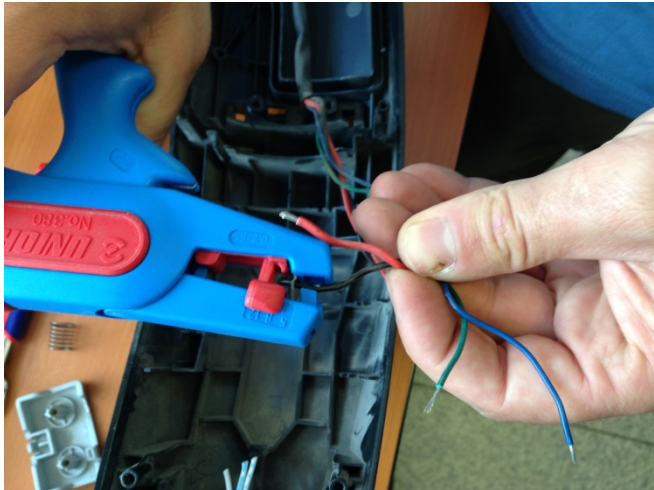
UPO DCPM exchange



Cut plastic connectors from the ends of nozzle-, MFU-, and handle wires.

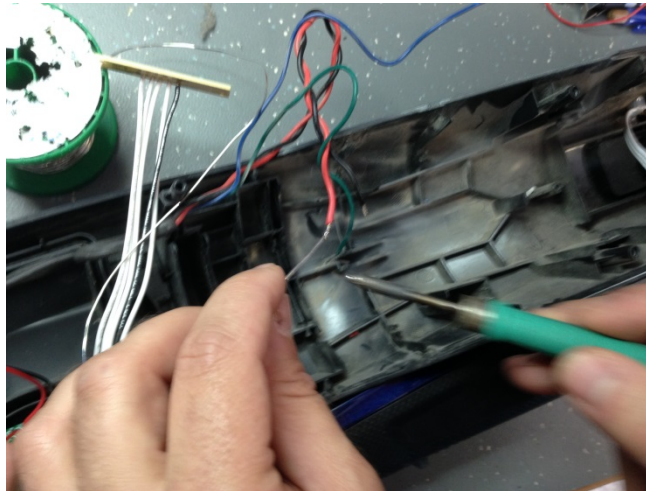
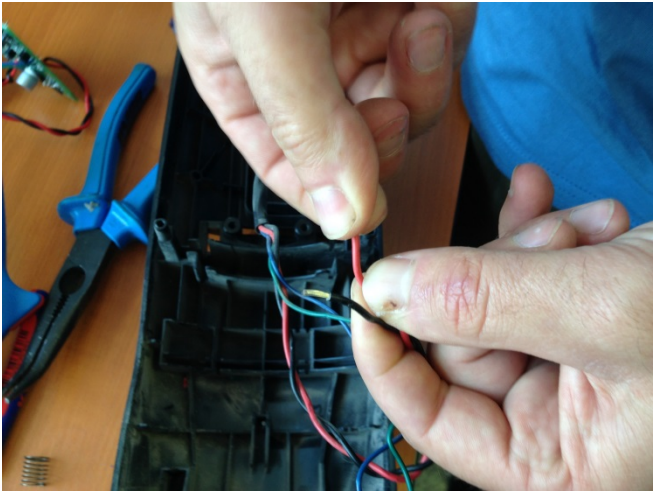
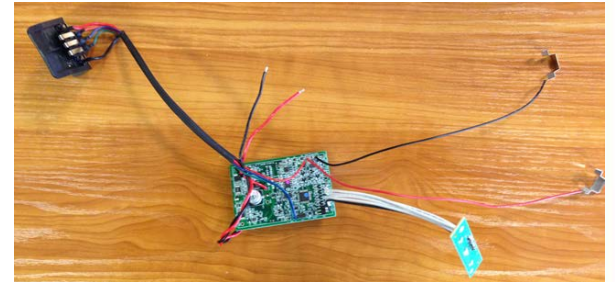


UPO DCPM exchange

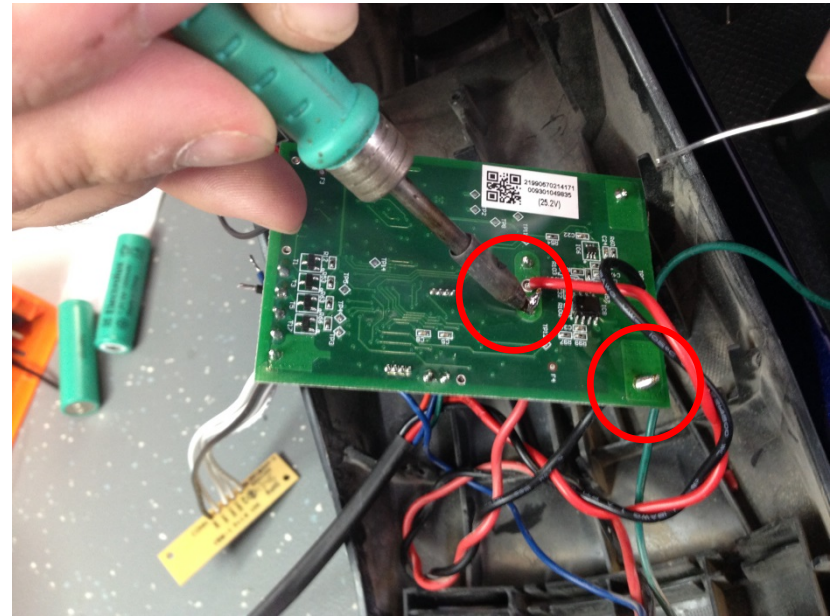
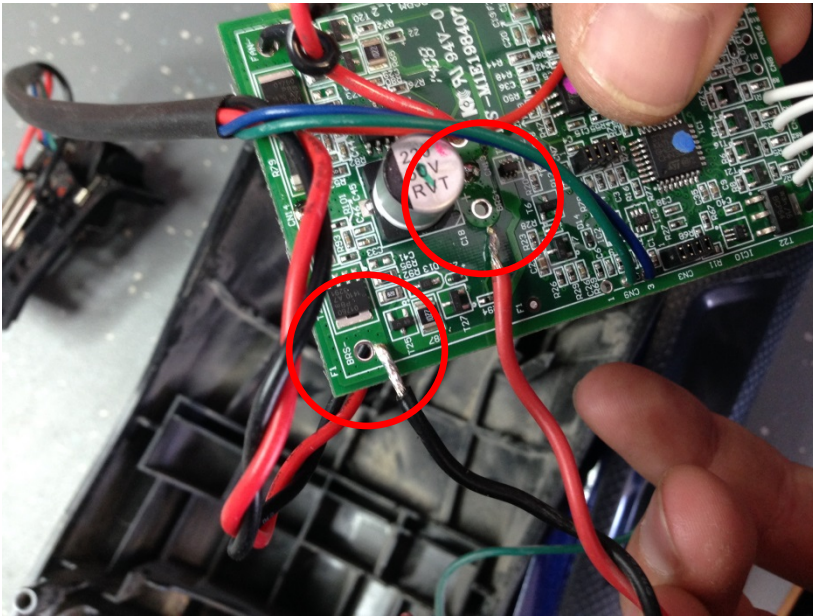


After having the wires stripped (4 mm is enough), twist the wire endings and add a small tin layer on them.

Check the wire lengths before soldering them to the new DCPM PCB, if those are long enough and when soldered together to new pcb, let it fit properly to the pcbs place in the stick base part. If the wires are short, please extend length with adding extra wires.



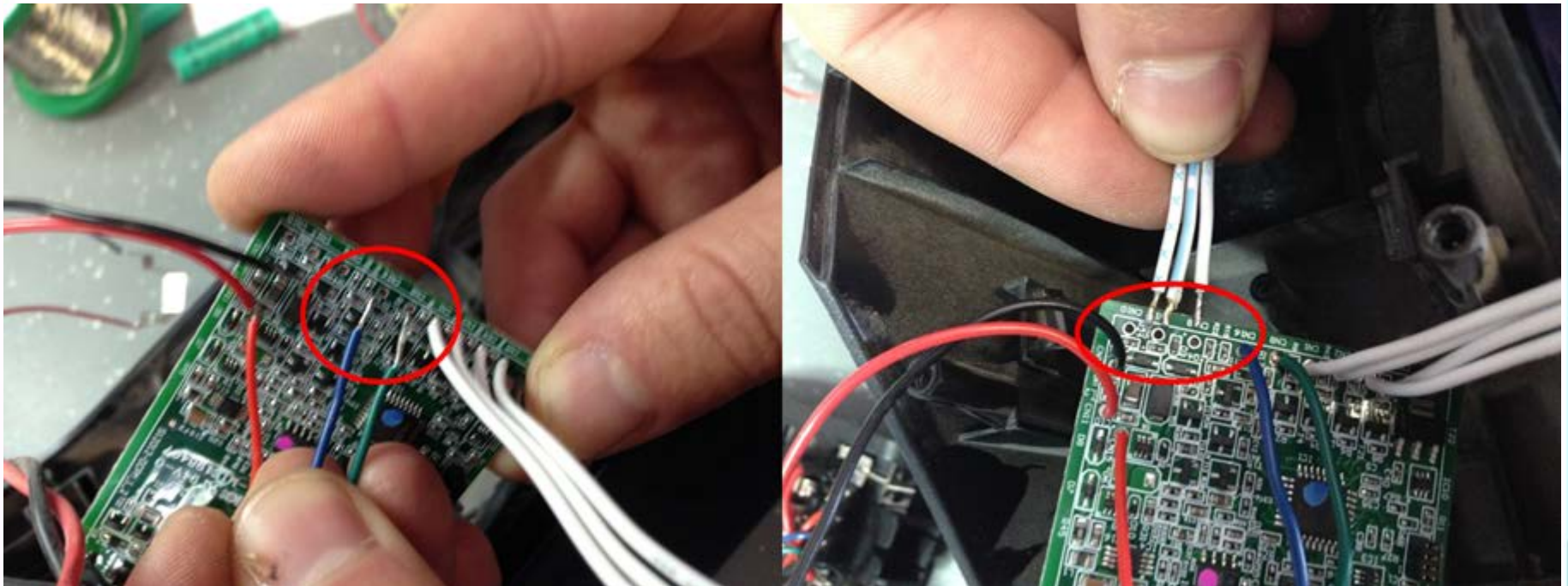
UPO DCPM exchange



Then comes the soldering part of the process with the proper wire routing. First push the tinned wires through the holes and solder the BRS+ and BRS- wires from the back side.

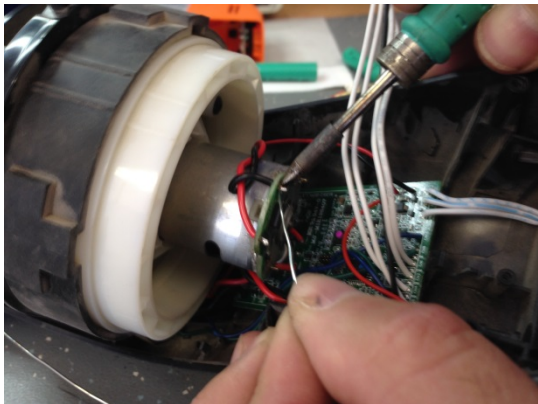
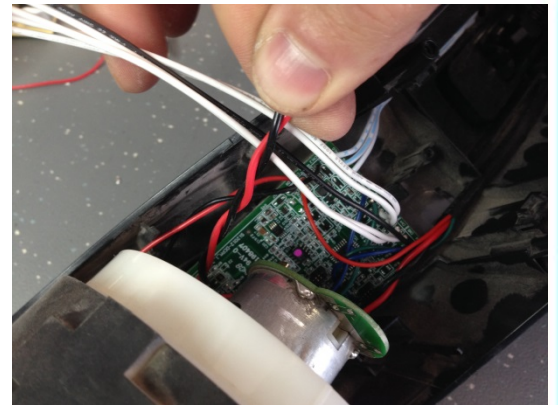
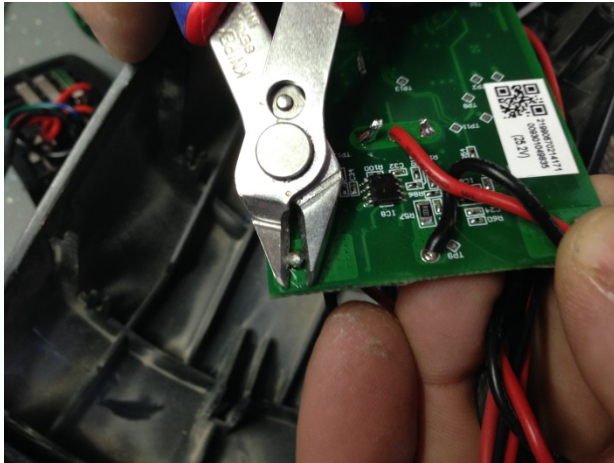
UPO DCPM exchange

As a next step of soldering part, solder the BRC wires and handle wires to the holes on pcb. Mind the colours and the markings on the wires – soldered order must be according to photos attached! Carry out soldering from the back side of the PCB!



UPO DCPM exchange

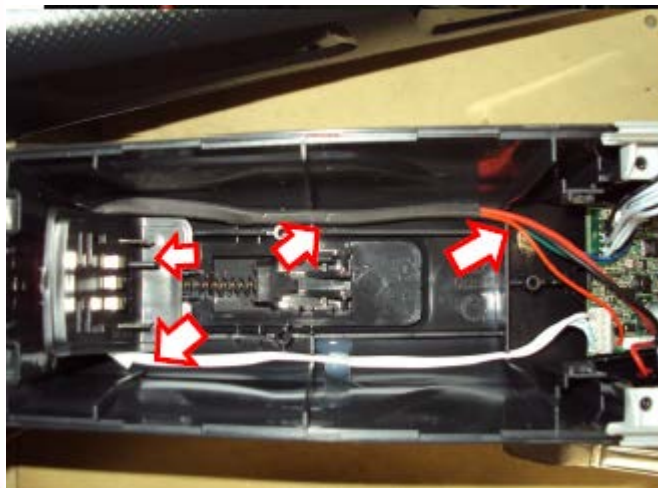
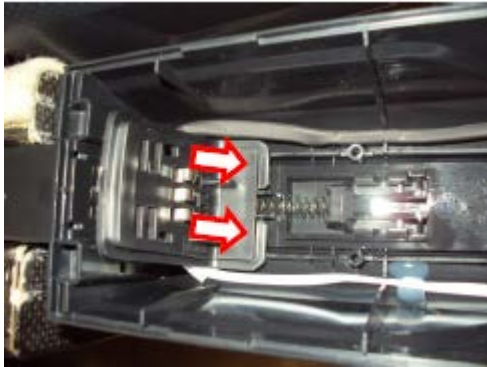
As the soldering is done and the soldering legs are too remain too long on the back side of the pcb, cut it with a pincher.



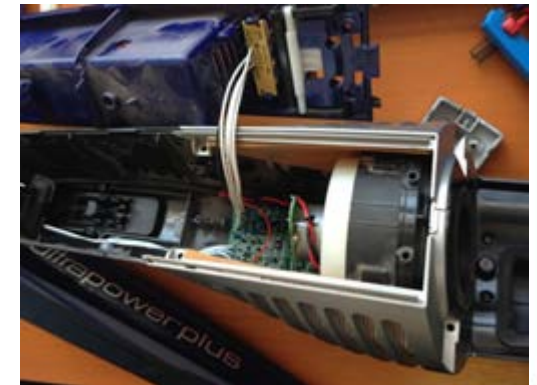
If you have an old version of MFU filter PCB assembled with tabs, carefully please desolder the tabs, clean the holes on the filter PCB. Twist the MFU wires twice and insert the wire ends to the holes before soldering. Mind the polarity of wires!

UPO DCPM exchange

After having the wires soldered, fix the led PCB in the cover, the MFU to the housing, the charging contact plates and battery contact plates! Use hot melt for fixing the communication ribbon cable during wire routing as seen on the picture attached!



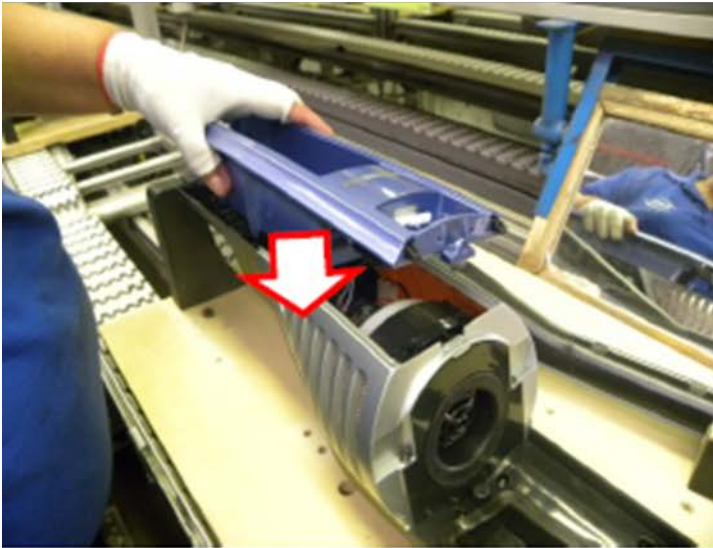
Insert side covers to the base and fix them with screws!



UPO DCPM exchange

Insert and fix the top cover to (5 screws) on to the cleaner! Watch out for the positioning of battery connection plates!

Finally insert the dust container back to the appliance. Put back the two springs to the crosses and snap back the cover button!



UPO DCPM exchange

**Place back the nozzle with the fixing ring and connect the joint part with 3 screws!
When it's done, attach the below (hose) to the air inlet part.**



When having the complete appliance assembled, test it for functions!