

## **DOOR GASKET DAMAGED BY DOOR HANDLE. PROTECTION SHOE EXCHANGE IN SENA HANDLE.**

### **DESCRIPTION:**

When door gasket is positioned to close to Sena handle it can get damaged by protection shoe.

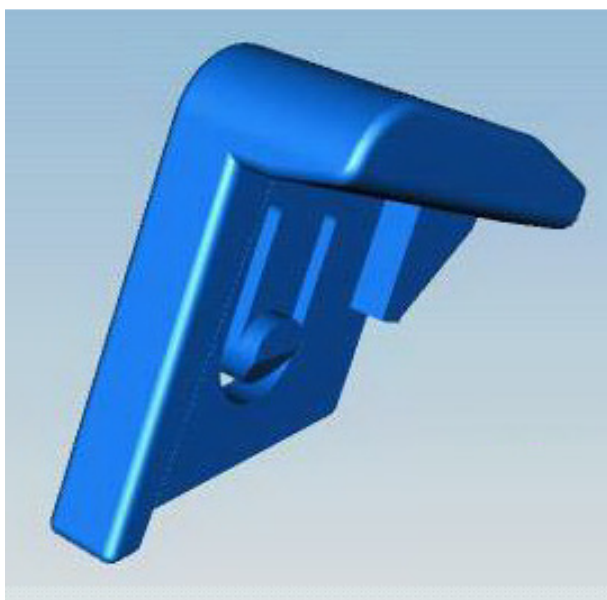


Door gasket damaged by protection shoe.

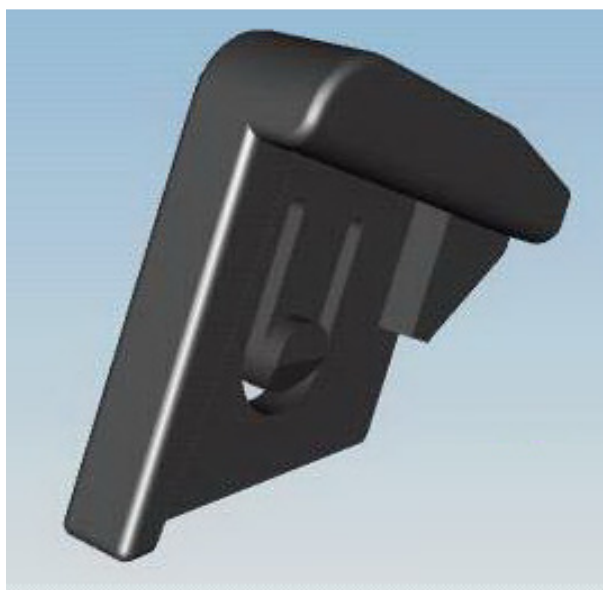
### **SOLUTION:**

Protection shoe should be changed to thinner one. Damaged gasket should also be replaced.

**NOTE: If gasket is not damaged and protection shoe is positioned close to it, shoe should be replaced to prevent gasket damage.**



Old protection shoe.



New thinner protection shoe.



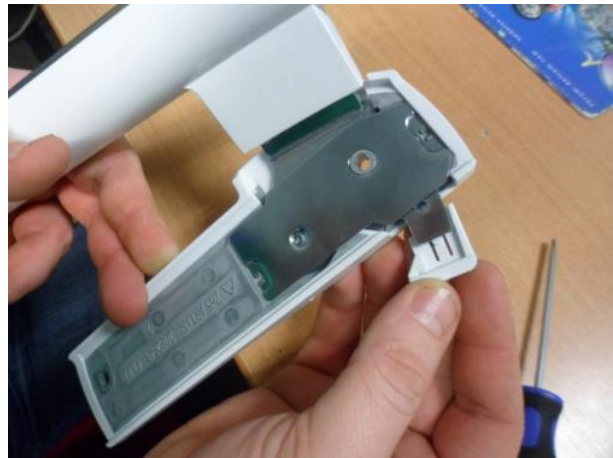
1. Pull the handle and keep in 'open' position during shoe replacing.



2. Push out the shoe using screwdriver or other pointed hand tool.



3. Remove the shoe.



4. Insert new thinner shoe. Push it in until pin is fixed in hole.



**SPARE PART NUMBER:**

New spare part	Description
2081093011	New, thinner shoe

**MODELS INVOLVED:**

PNC	MODEL	BRAND
92504112800	A52200GSW0	AEG
92504113000	AGS1982	AEG
92504113300	A42200GSW0	AEG
92504113400	A52200GSW1	AEG
92504140000	A42000GNW0	AEG Electrolux
92504140100	A52010GNW0	AEG Electrolux
92504140200	A72010GNW0	AEG Electrolux
92504141300	A72019GNW0	AEG Electrolux
92504141400	A72018GNW0	AEG Electrolux
92504141500	A72010GNW0	AEG
92504142500	AGN1811	AEG
92504170000	S63300KDW0	AEG
92504171300	S43300KDW0	AEG Electrolux
92504172200	S63300KDW0	AEG
92505202800	S44000KDW1	AEG
92505252700	A42800GSW0	AEG
92505252800	A52800GSW0	AEG
92505253000	AGS2512	AEG
92505275900	A42700GNW0	AEG
92505278100	AGN2291	AEG
92505280600	A42700GNW0	AEG
92505280700	A52700GNW1	Electrolux

**REVISION:**

Revision	Date	Description	Author	Approved by - on
00	03/2014	Document Creation	Krzysztof Łazowski	Sándor Kórik – 04.03.2014