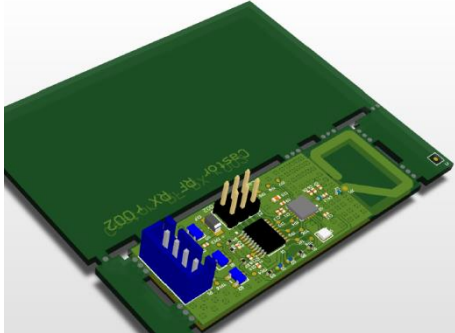
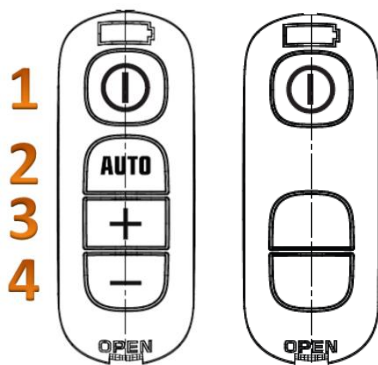


## Setting the RF

Setting the first when the PCB was not used

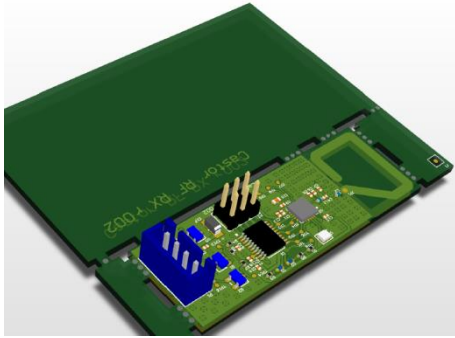


1. Plug the unit in.
2. Press the proper buttons ( 1+3+4) at the same time(it must be done within 20 seconds after plugging in the cleaner )
3. If the setting is successful the cleaner starts for 1,5 seconds and than stops.
4. When restarting the cleaner works normally.



## Reseting

If the PCB was set already.



1. Plug in the unit.
2. Press the proper buttons at the same time ( 1+4)  
/ it must be done within 20 seconds after plugging in the cleaner / This is erasing the code from the system.
3. Plug the unit out. Wait 3 seconds.
4. Plug in the unit.
5. Press the proper buttons at the same time ( 1+3 ) / it must be done within 20 seconds after plugging in the cleaner /
6. The cleaner should work normally.

