

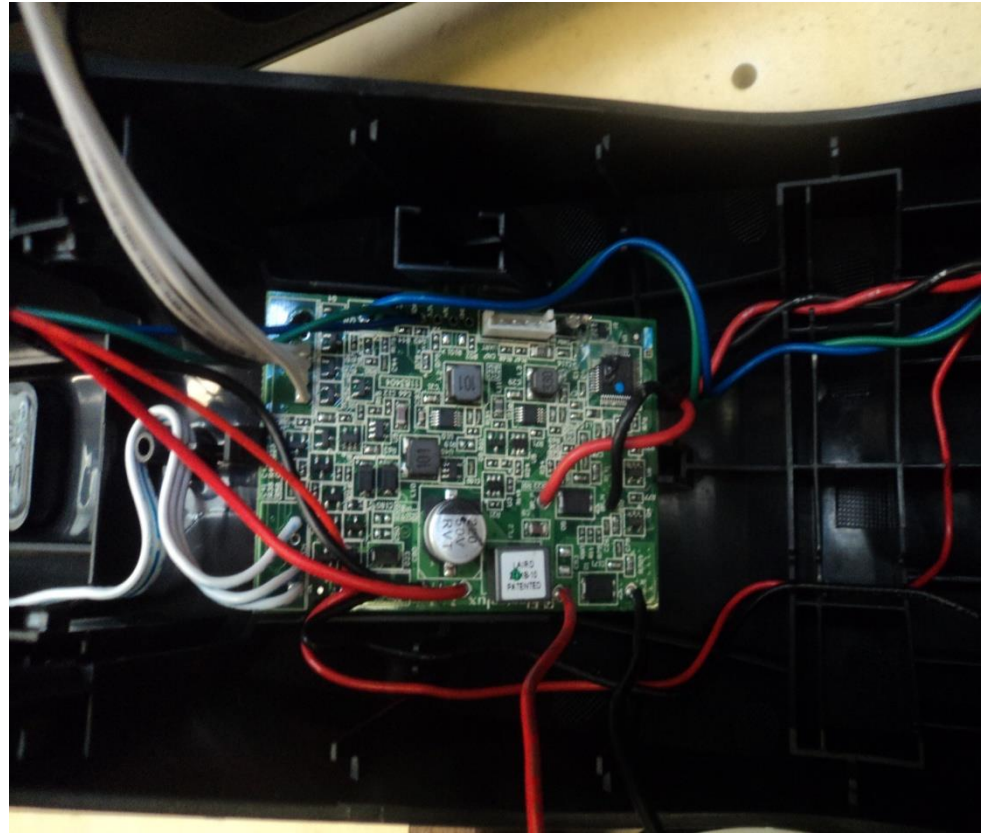
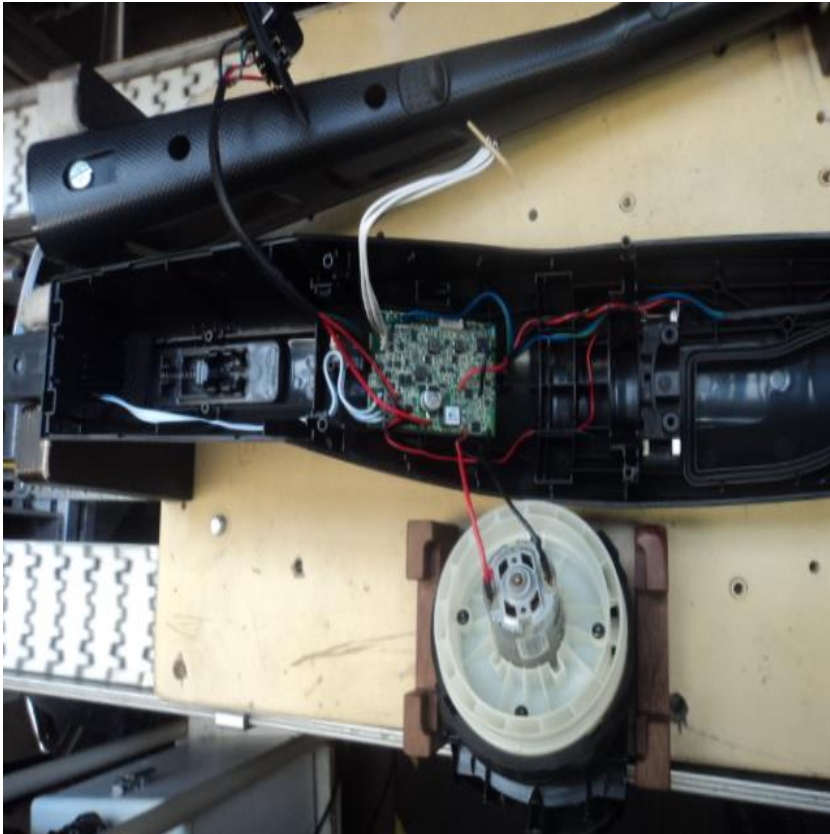


Ultra Power Connection change

Soldering

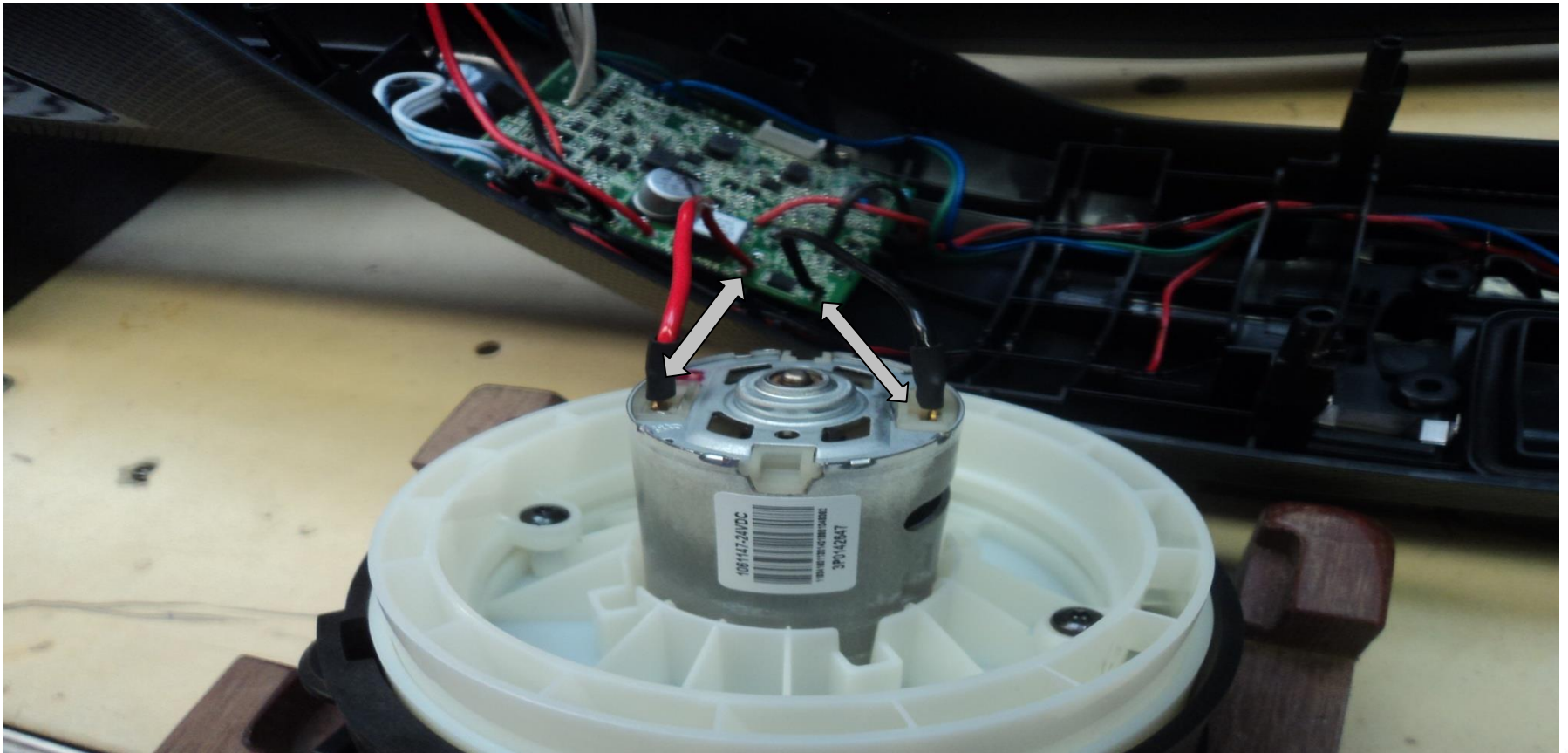
Thinking of you
Electrolux

- Connectors on the wires inside the cleaner were removed and connections are soldered.



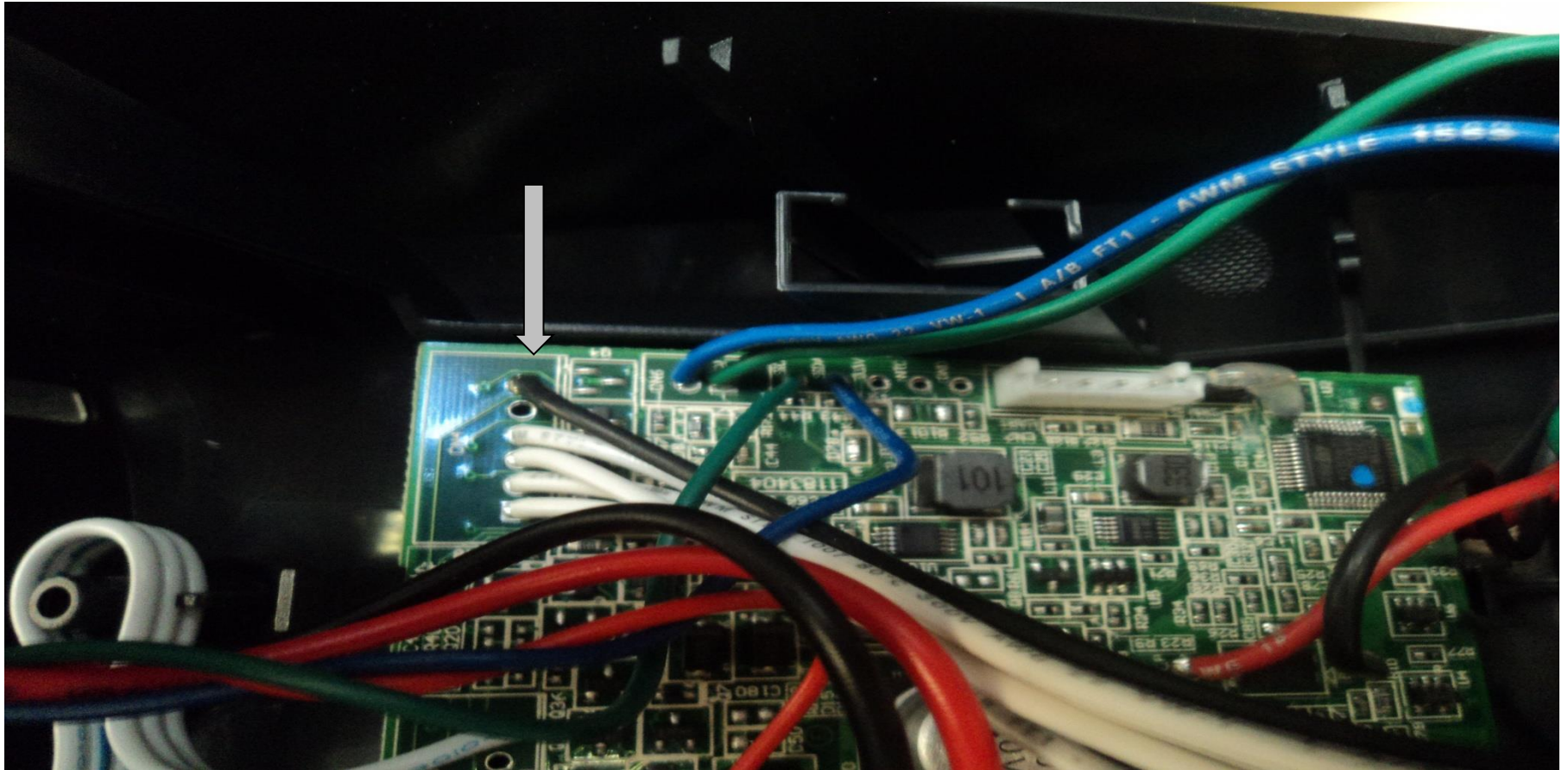
Motor wires

Polarity must be kept otherwise the PCB burns the battery immediately out, making that unusable.



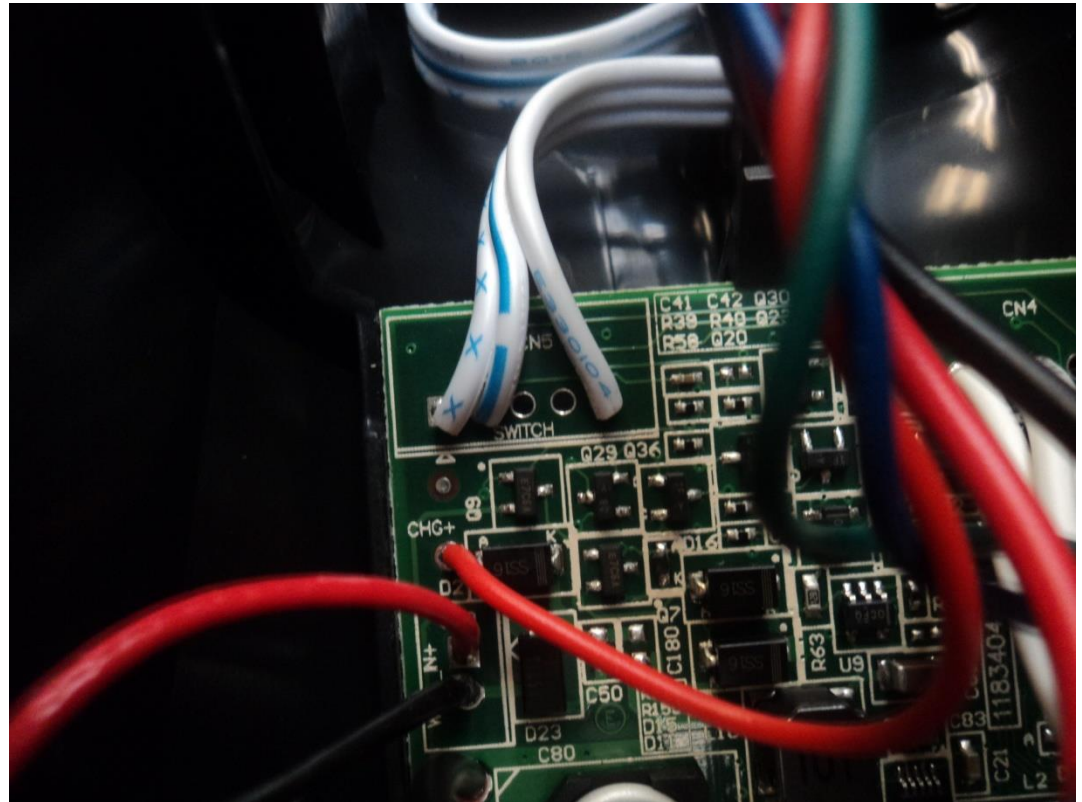
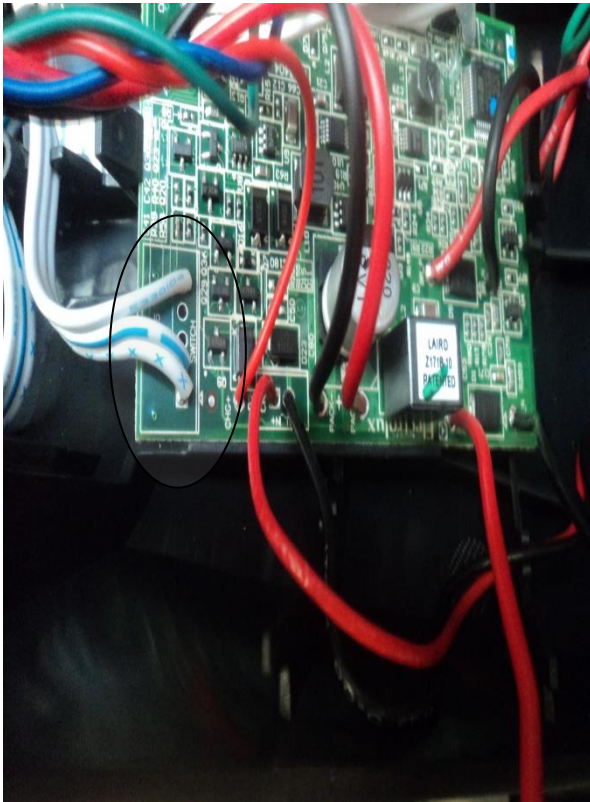
LED PCB

- Start the soldering with the black and follow in order the wires.



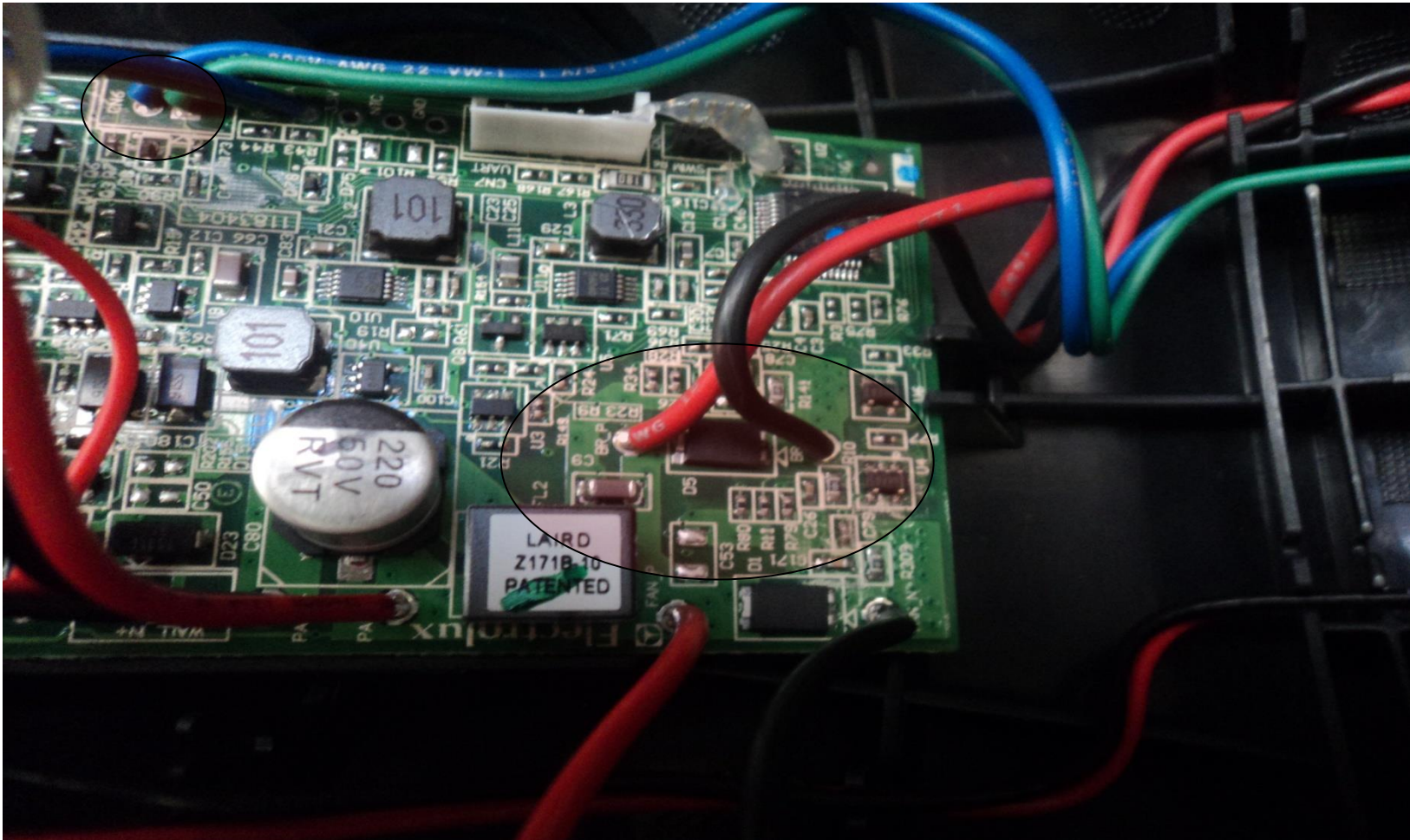
Handle PCB

- Keep the order according to the markings.



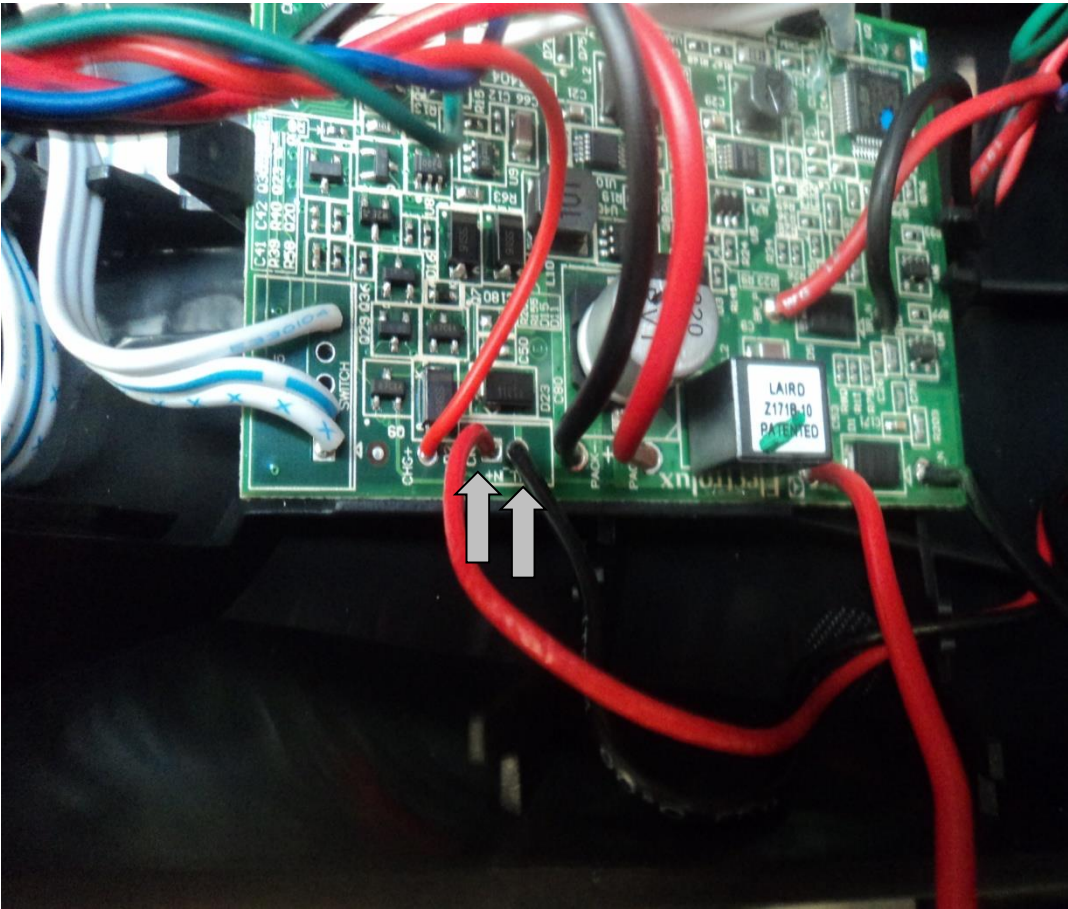
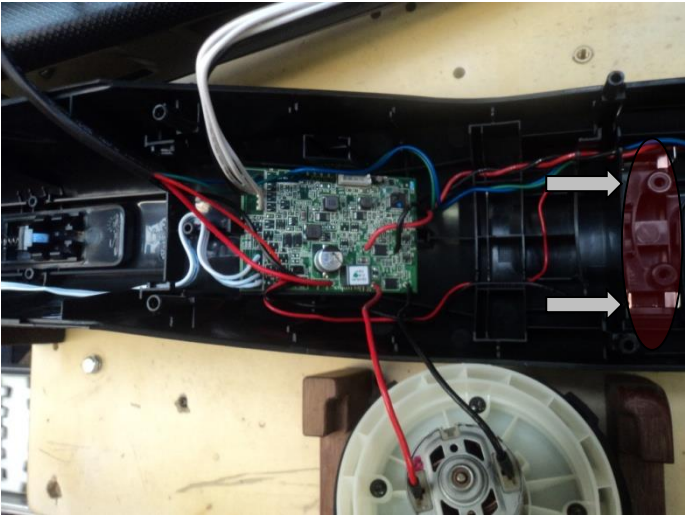
Nozzle PCB

Thinking of you
Electrolux



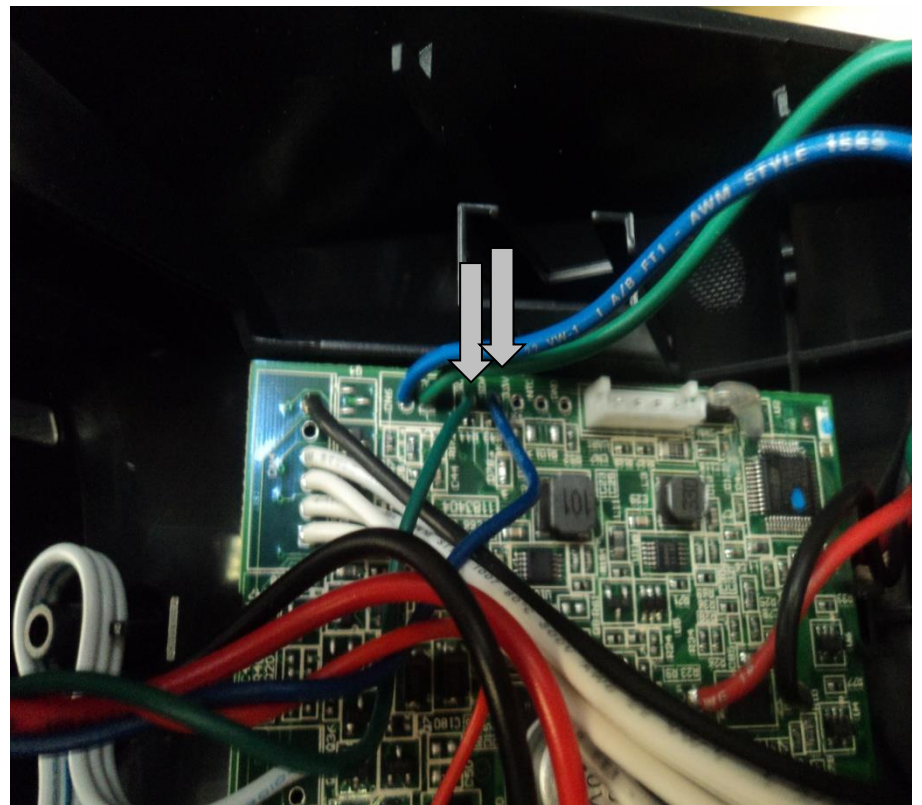
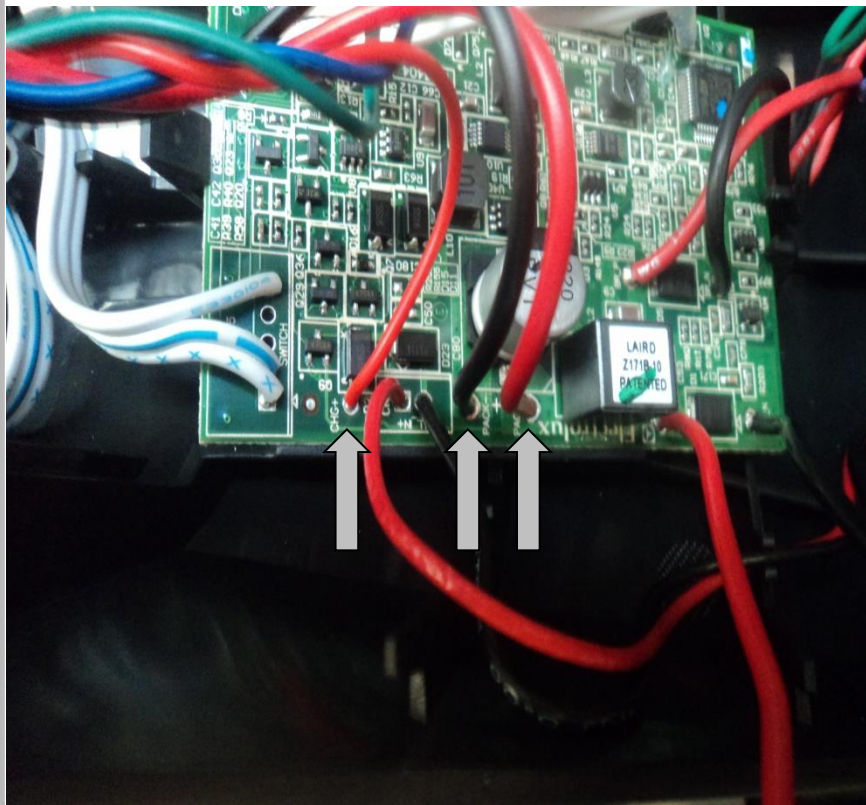
Charger connections

Thinking of you
Electrolux



Battery connections

Thinking of you
Electrolux



Schematic view

Thinking of you

Electrolux

