

**ICE BUILD UP IN THE DRIP CHANNEL – RIGHT HAND SIDE
ON FRIDGE COMPARTMENT**

DESCRIPTION:

The built-in fridge/freezer concerned by this service bulletin may have ice formation in the right-hand side of fridge drip channel (above the vegetable glass shelf).

This ice formation is due to the fact that this is the coldest part of the refrigerator and behind inner liner, inside foam there is the evaporator.

If the evaporator, for any reason, touches the inner liner, ice can build-up.



The service intervention on appliances in Tab. A. consist in installing a heating element where the water drain is located in order to avoid ice formation on the drip channel and condensation under the glass shelf.

SOLUTION:

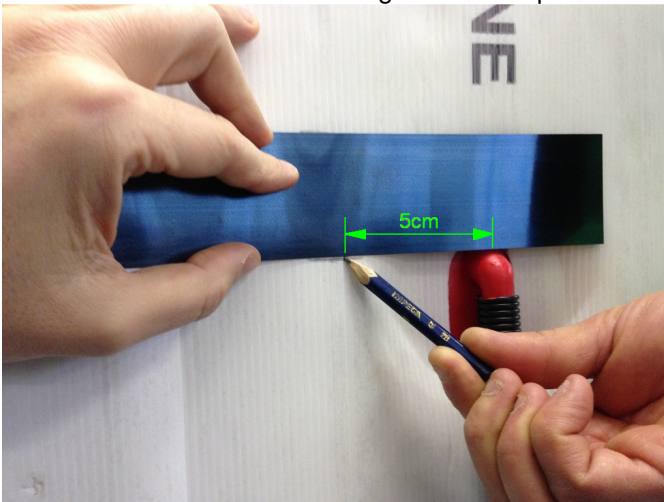
Installation of heating element:



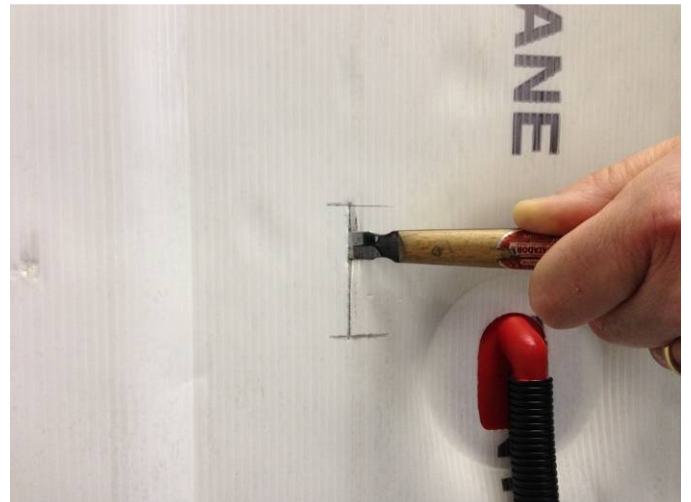
1. Unplug the appliance. Remove the condenser screws and secure it to the cabinet using adhesive tape.



2. Correct fixation of the metal sheet once inserted in the foam



3. Mark the perimeter of the sheet on the corrugated material (5cm left from discharge tube)



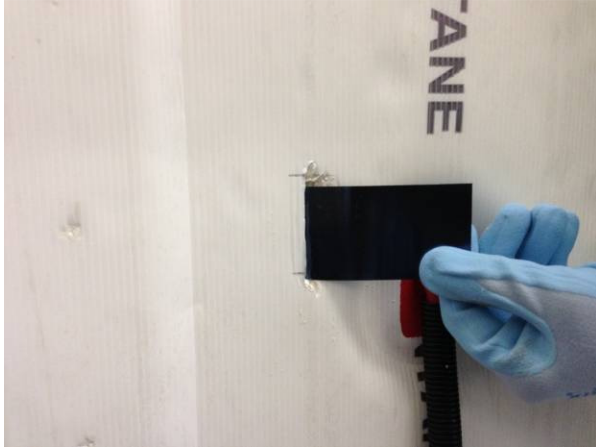
4. Using a cutter cut the corrugated material near the reference of the sheet. This distance must always be respected as the evaporator, which is located in the foam, must not be damaged.



5. Insert the metal sheet without heating element in the foam



6. The metal sheet has to be insert at 45°



7. Correct insertion of the sheet (must protrude about 6-7cm)



8. Slide the metal sheet with heating element above the other one



9. Take out the metal sheet without heating element



10. After positioning the heating element, remove the metal sheet and fix the cable to the corrugated material with adhesive tape



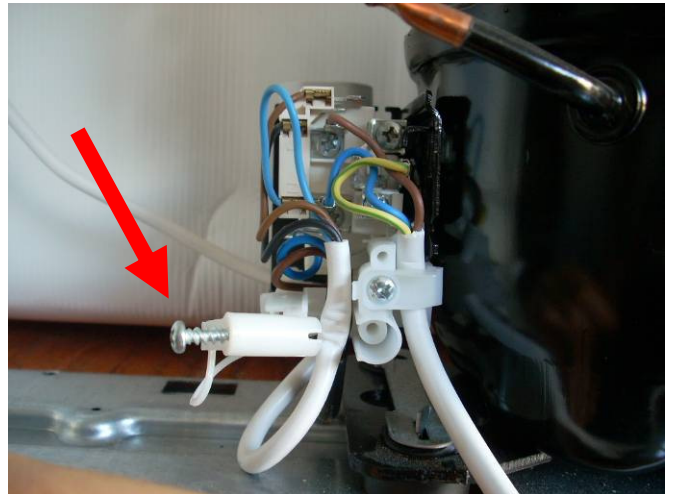
11. Fix the condenser to the cabinet with screws



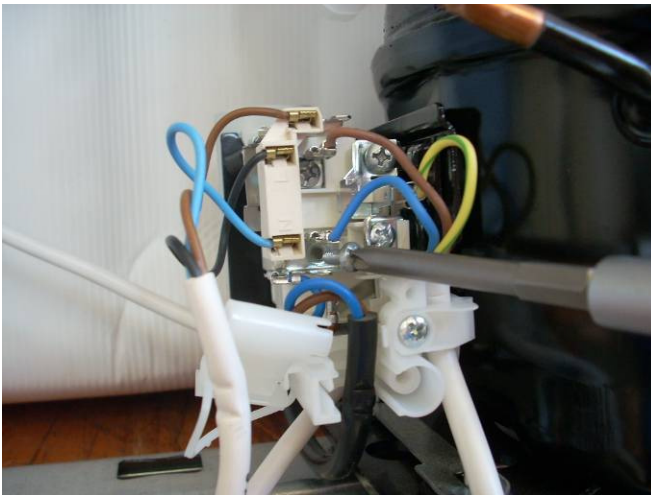
Electrical connection:



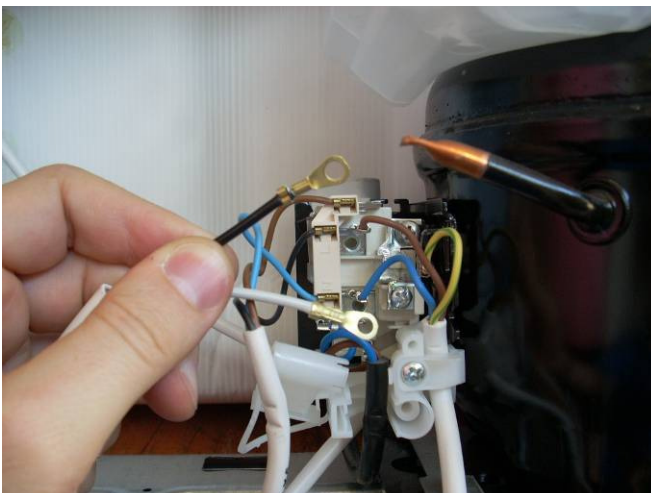
1. Remove the terminal board cover



2. Unscrew the cable clamp

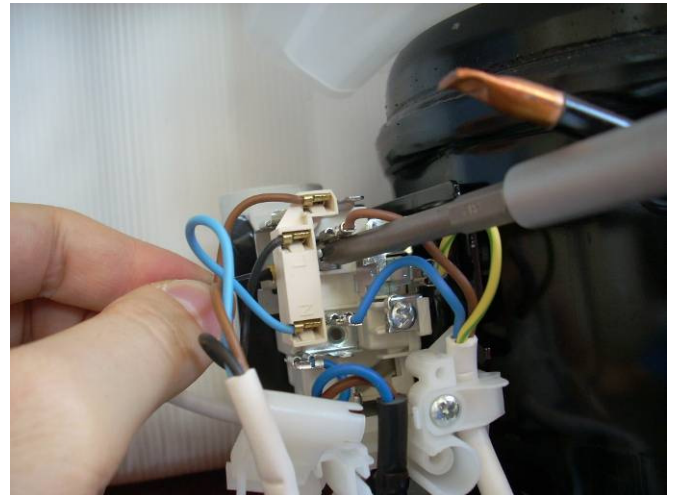
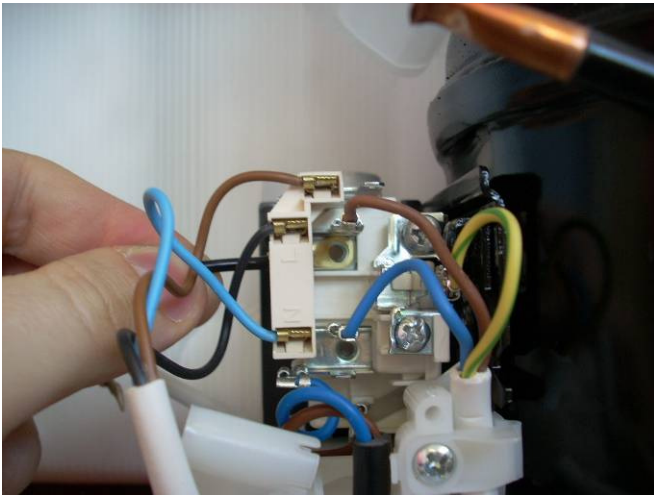


3. Remove the fastening screws from the fastons on the blue and brown wires

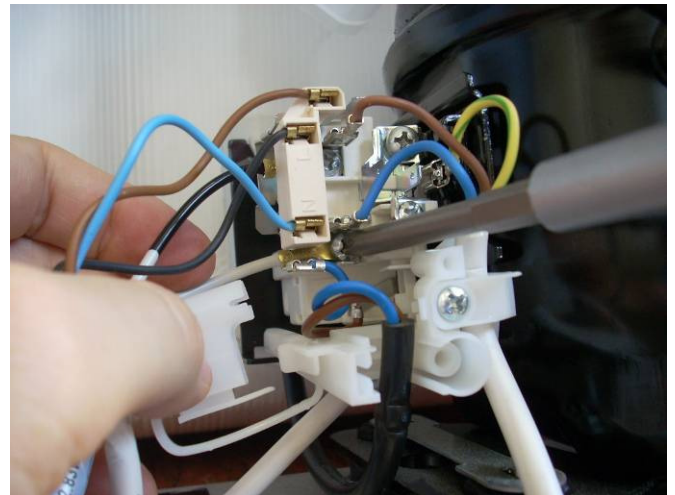
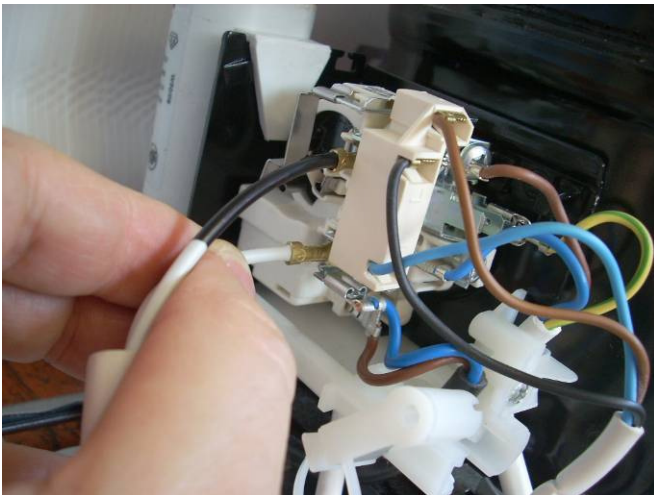


4. Secure the ring terminals of the heating element using screws

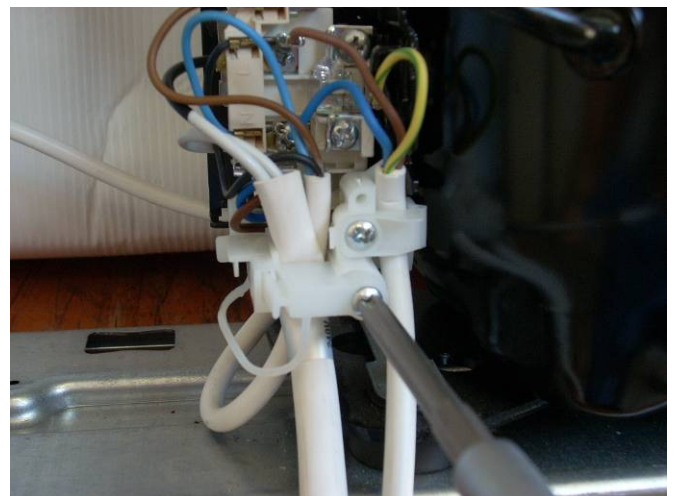
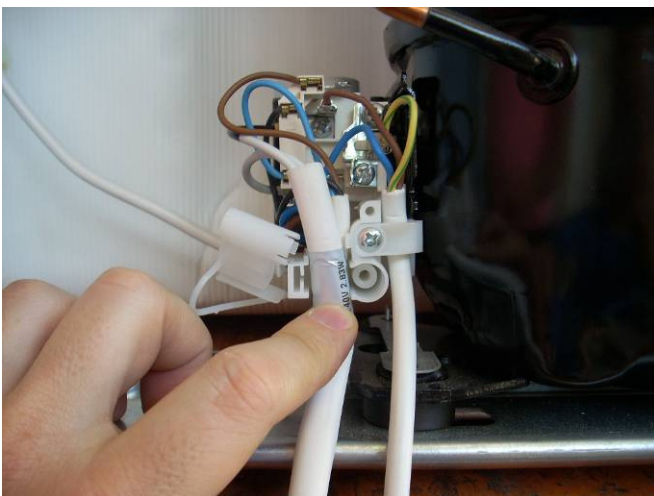




5. Secure the ring terminals of the heating element using screws

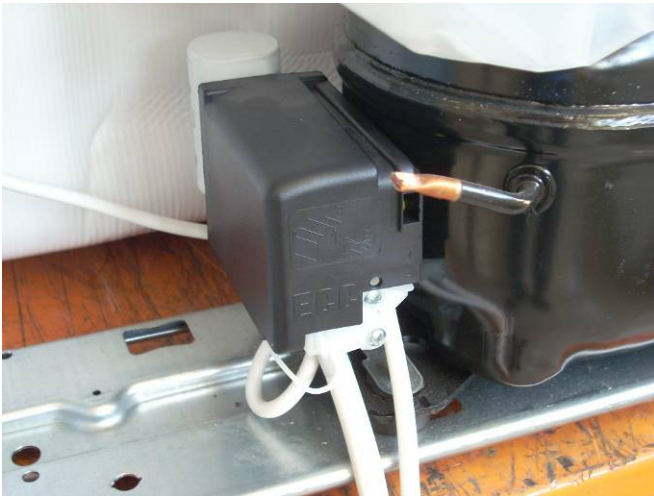


6. Secure the ring terminals of the heating element using screws



7. Secure the heating element cable using the main cable clamp.

IMPORTANT: check carefully that all the terminals are securely fastened to the terminal board.



8. Re-insert the terminal board cover



9. Fix the transformer on metal cross bar



10. Secure the transformer cable with clamps



SPARE PART NUMBER:

Spare part code	Description	Quantity
2390002125	Heating element kit with cable, transformer and metal plate	1

MODELS INVOLVED:

PNC	NOTE
925692xxx	All since production start
925696xxx	All since production start
925613xxx	All since production start
925701xxx	All since production start

REVISION:

Revision	Date	Description	Author	Approved by - on
00	04/2011	Document Creation	Krzysztof Łazowski	Stefania Piccin – 17.04.2013