

SERVICE BULLETIN

Dometic GmbH, In der Steinwiese 16, D-57074 Siegen

RM/S 8500/01/05/50/51/55, RMD/T 8501/8505/8551/8555

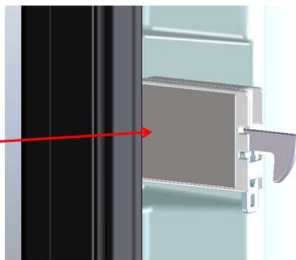
Change position of door locking device

RM/S 8500/01/05/50/51/55

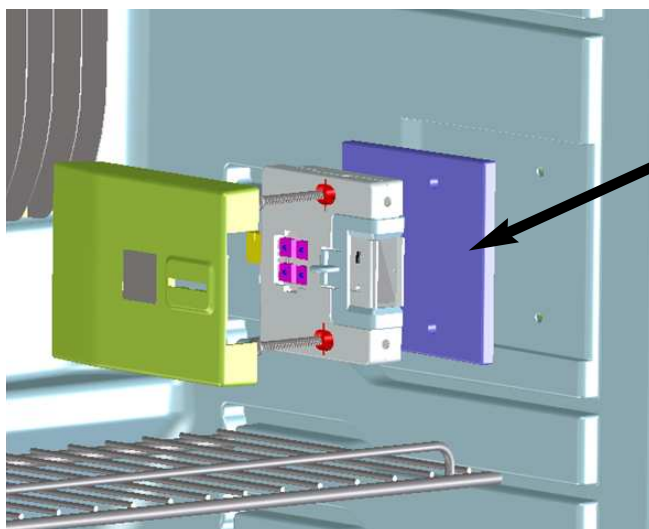
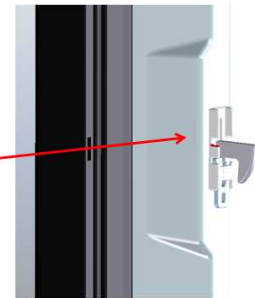
In above mentioned fridges the position of the latch has changed (pic. 1+2).
If the door of one of these models will be exchanged, a space plate (spare part number 295 1973-20/1) has to be installed under the door lock (pic. 3).



pic 1



pic 2



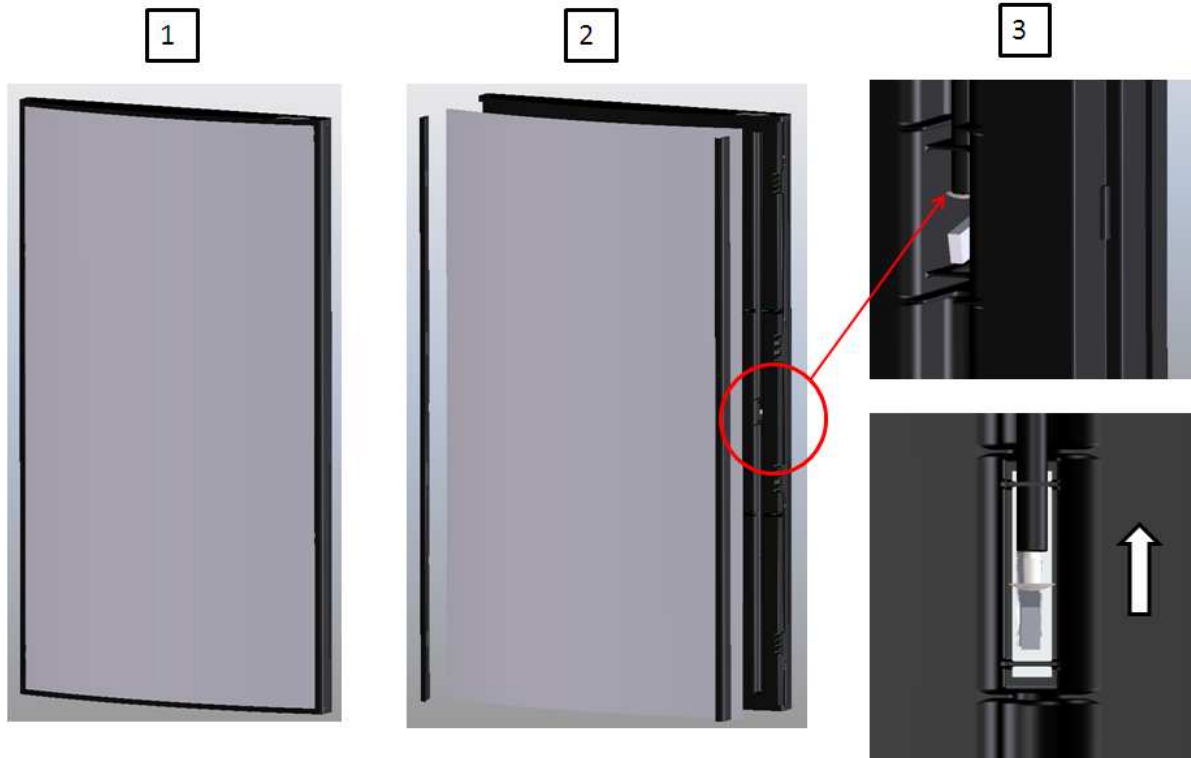
pic 3

Activation rod of the door locking device get stuck

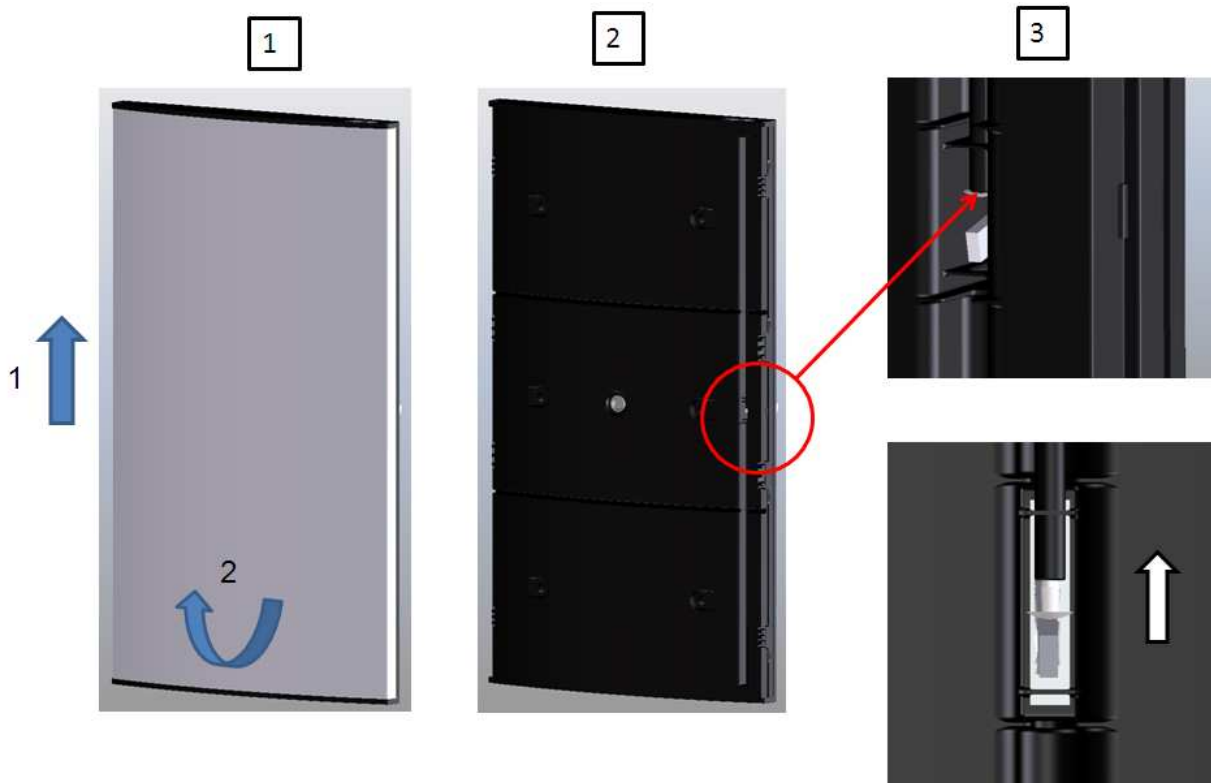
RMD/T 8501/8505/8551/8555

In above mentioned fridges the activation rod can get stuck. In this case, please install the expanding rivet (spare part number 292 3142-06/7 (1 piece) or 241 2559-17/7 (5 pieces)).

Door with frame



Door without frame



Insulation strip for door locking device in freezer compartment

RMD/T 8501/8505/8551/8555

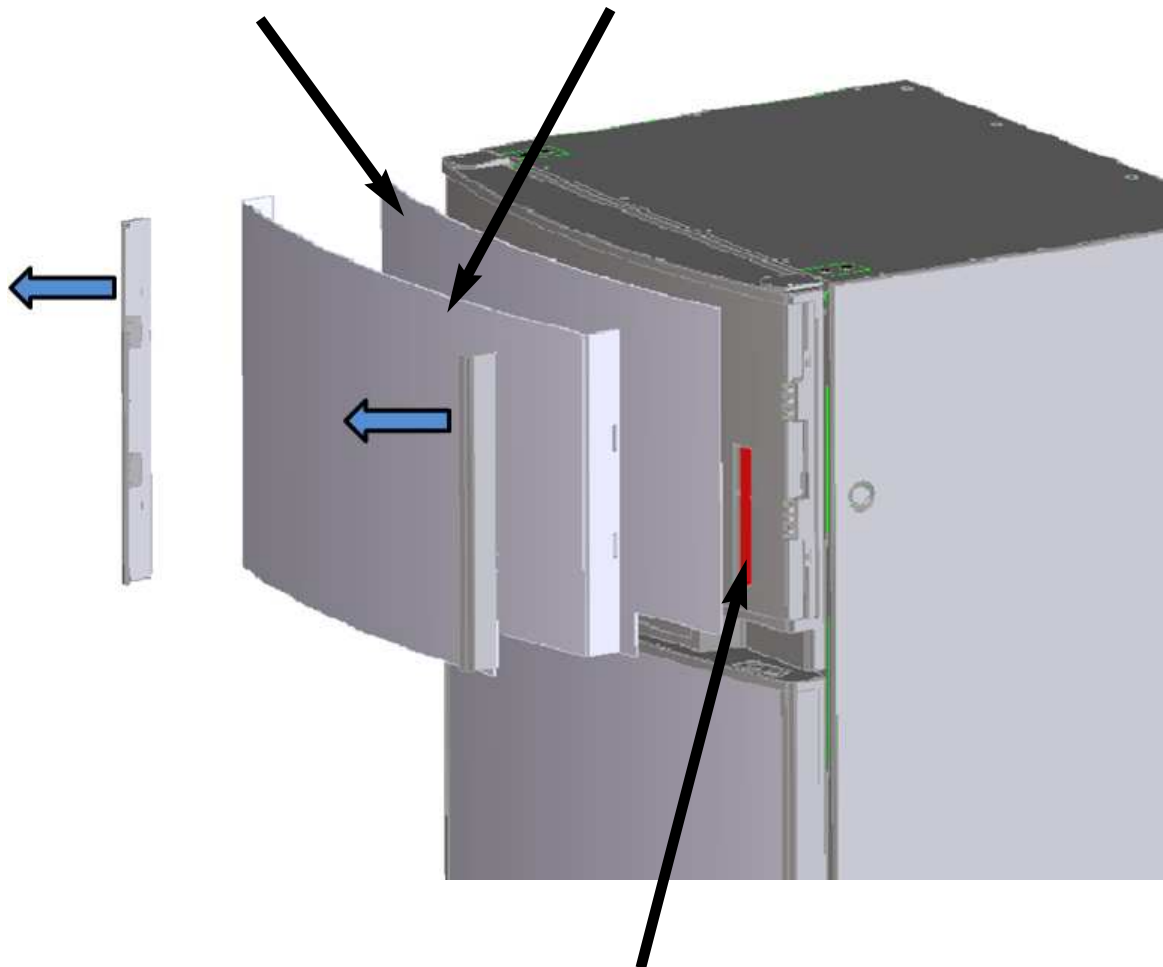
In above mentioned fridges condensed water can arise on the decoration panel and the door locking device can be frozen. In this case please install insulation strip (spare part number 293 5688-21/4).

Version with cover strip

Take off the cover strips and push the decoration plate up and take it away.

Version without cover strip

Push the decoration plate to the left side and take it away.



Insulation strip 293 5688-21/4