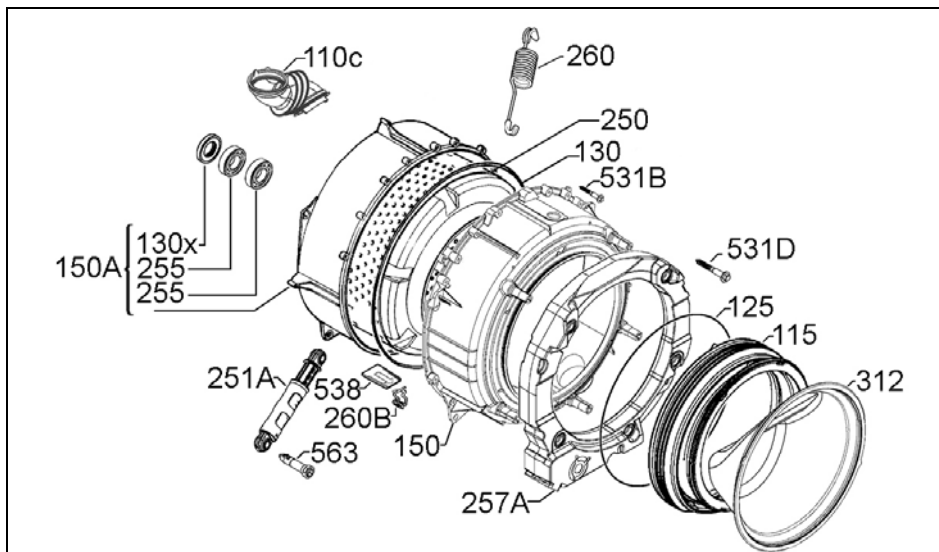


REPLACEMENT OF WELDED TUB (Rev.02)

The welded tub part no. 126 85 76-47/5 is not available as spare part anymore.
As a replacement it is possible to order the components listed below:

SPARE PARTS



Pos.	Description	Pz.	Part number
110C	Detergent fill hose	1	110 87 22-00/8
115	Rubber bellow	1	132 00 41-05/4
125	Fixing spring,rubber bellow,tub,	1	132 00 24-00/1
130	Gasket,shell,tub	1	124 01 59-03/6
150	Shell,front,tub	1	124 96 57-47/7
150A	Assembly,shell,rear	1	132 15 70-00/2
250	Assembly,drum	1	132 65 19-11/1
251A	Cushion	2	132 25 53-01/5
257A	Counterweight,front,16,5kg	1	110 84 79-21/1
260	Spring,suspension,tub	2	126 06 33-61/3
260B	Retaining spring,heater	1	124 78 25-10/0
312	Glass,pothole,	1	132 22 45-00/0
531B	Screw,shell,tub	17	132 22 90-10/5
531D	Screw,counterweight,8x59 TPS TORX	5	132 65 89-01/5
538	Space compensator,heater element	1	124 66 69-15/2
563	Bolt,damper lining	4	126 05 34-00/1

Accessibility on the tub screwed

Insert the spring support of the heating element (Ref 260B) in its housing, positioned in the rear shell (Ref. 150A).

Insert the heating element spacer (Rif.538) in the guides as indicated by the arrow printed in low relief on the component.

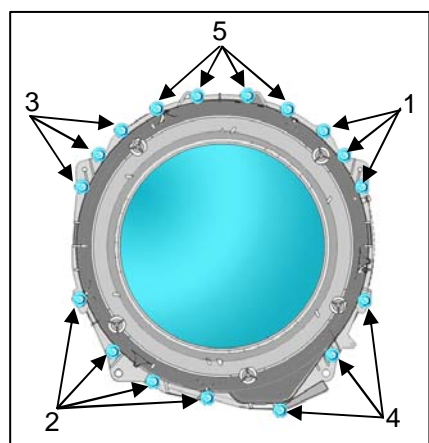
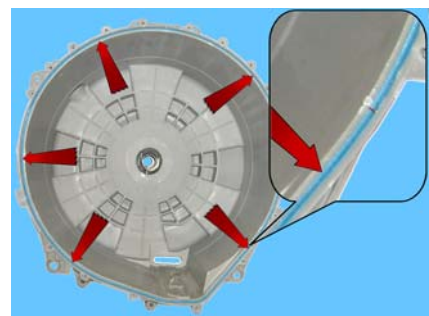
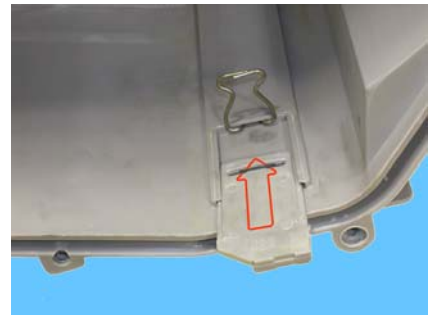
Insert tub seal (Ref 130) in the rear shell assembly (without stretching).

Insert the drum (Ref. 250) in the rear shell assembly

Insert the front shell (Ref. 150) and to insert 17 screws (Ref 531B) In their seats.

Tighten the screws to groups with the sequence. As shown in Figure.

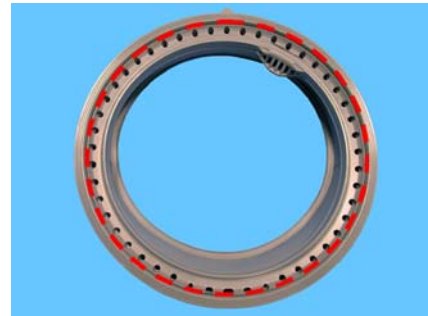
With a tightening torque of 8 to 12 Nm



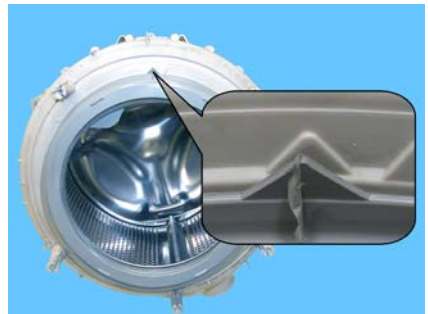
Use the liquid soap to lubricate the seat of front shell where the rubber bellow is inserted.



Use liquid soap to lubricate the part where the tub is inserted (indicated by the red circle).



Place the reference on the bellow, aligned with the reference printed in the front shell



Place the spring that fixes the rubber bellow to the tub screwed.

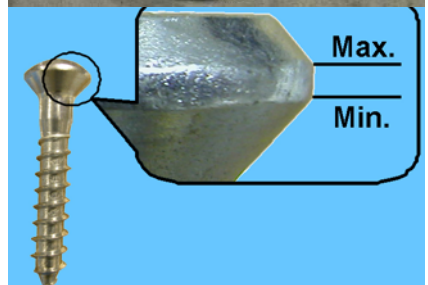


Insert the front shell counterweight on supports and tighten the screws. Using a insert Torx T50. At a torque of .15 Nm.



To get the same tighten force on the screws, the flaps of the support have to be open up them between 26 to 30 mm.

To get the same torque of closure may be based on the shape of the screw head. (as shown in the figure: Min. 26 mm. while Max 30 mm).



Minimum



Maximum

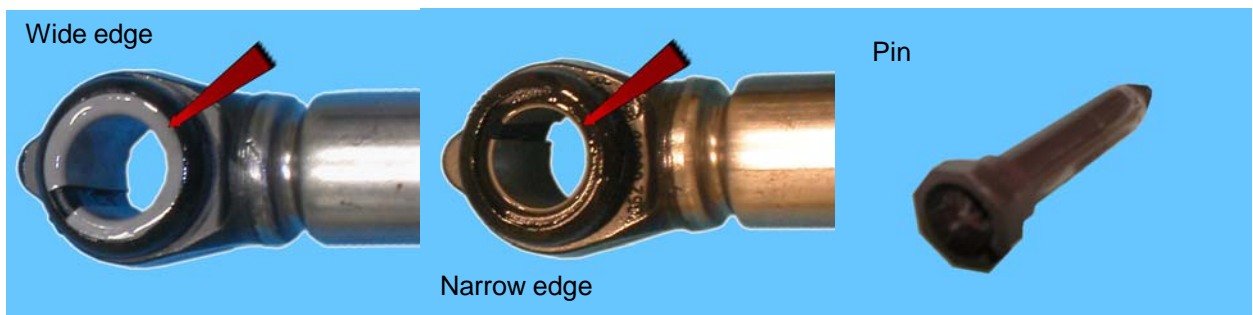


During assembly the tub screwed in the cabinet:

Lubricate both ends of each spring indicated by arrows.
Use grease Code 5026 24 16-00/6.



During the assembly of the shock absorber (at the bottom and on the tub screwed) to pay attention to the shock absorber bushings and insert the pin socket on the side of the wide edge.
Lubricate the pin with grease Code 5026 24 16-00/6.



In positioning the loading detergent tube, pay attention to references and pay attention to properly fix the clamps.



Arrange the pressure switch hose as shown in the figure, and position it in the purpose-provided seat incorporated into the screwed tub



To replace the door, loosen the screws joining the front and rear frames. Be careful not to scratch them.



During the assembly of components restore the initial conditions of the appliances like as soon as leaving the assembly line.

AFFECTED MODELS:

PNC_ELC	Model	Service Notes
91420700103	EFW10480W	599722755
91420700203	EFW10180W	599722757
91420700402	EFW10480W	599722759
91420700502	EFW10180W	599720860
91420700601	AWF10080W	599720981
91420700700	EFW107110W	599728569
91420700800	EFW107410W	599730253
91420710102	ZWH5105	599720567
91420710203	ZWH3105	599720569
91420710302	ZWH6105	599722760
91420710402	FWH5105	599722761
91420710502	ZWH3105	599720984
91420710600	ZWH7100C	599724870
91420710602	ZWH7100C	599725114
91420710700	ZWH5105	599728583
91420710900	ZWH6105	599728572
91420711000	ZWH7101	599728565
91420711100	ZWH5104	599731294
91421700103	EFW12680W	599725439
91421700204	EFW12480W	599725967
91421700304	EFW12180W	599735678
91421700403	AWF12480W	599725095
91421700802	AWF12080W	599727899
91421700900	EFW127210W	599728594
91421701100	EWH127310W	599728615
91421701200	EFW127410W	599730374
91421701400	EFW127111W	599730379
91421701500	EFW127112W	599735691
91421710202	ZWH3125	599722835
91421710203	ZWH3125	599732631
91421710303	ZWH6125	599727824
91421710403	ZWH6125-3	599723380
91421710803	EFL1270D	599728581
91421710900	ZWH5125	599730382
91421711100	ZWH6125	599728939
91421711200	FWH5126	599727882
91421711300	ZWH5124	599734643

REVISIONS:

Revision	Date	Description	Author	Approved by - on
00	10/2011	Document Creation	DMM	AA – 10/2011
01	10/2011	Modified some part numbers in tab. Pag.1	DMM	XX – 10/2011
02	11/2011	Corrected spare part number Pos.531D	DMM	XX – 11/2011