

### Uncertain function of light switch

**DESCRIPTION:**

During the use of the appliance the Consumer can experiences uncertain switch off function of the light switch unit. That due to the relative position of the light switch unit with the door.

**SOLUTION:**

To assure the proper working of the light switch the position should be modified based on the below instructions.

**MODELS INVOLVED:**

Base model TT160CMX (below PNC's) can be involved.

|           |           |
|-----------|-----------|
| 933014026 | 933014054 |
| 933014030 | 933014056 |
| 933014031 | 933014057 |
| 933014032 | 933014058 |
| 933014033 | 933014061 |
| 933014035 | 933014062 |
| 933014036 | 933014063 |
| 933014043 | 933014064 |
| 933014044 | 933014066 |
| 933014045 | 933014067 |
| 933014048 | 933014069 |
| 933014049 | 933014070 |
| 933014051 | 933014071 |
| 933014052 |           |

**SERVICE INSTRUCTIONS:**

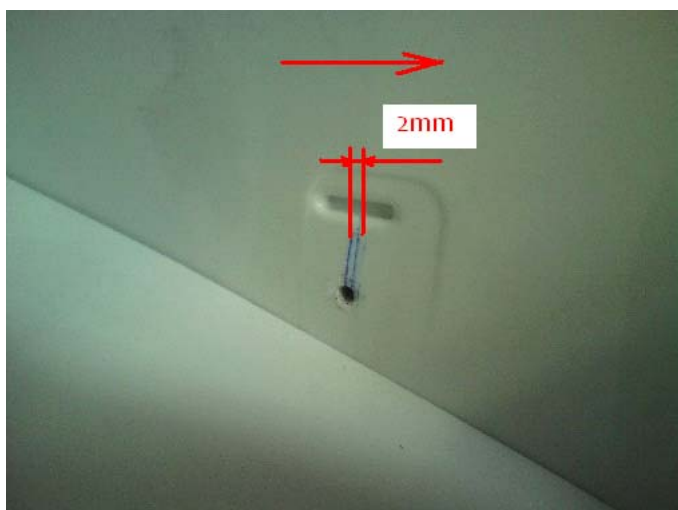
1. Check the safety lamp unit function. Measure the distance between side panel and door panel when lamp light on/off:
  - a. Over or equal to 40mm = OK
  - b. Less than 40mm = NOT OK; It's needed to modify the lamp unit position according to following instructions



2. Loose the light switch at front screw



3. Put a mark to the inner liner where to move the light switch (2 mm forward from the original hole position)



4. With a hand driller (D=3mm) carefully enlarge the hole in the inner liner



5. Fit into the hole the end of a simple tool (d max. =2,5mm )

With the help of a small hammer make an oval hole in the inner liner and move the threaded sheet (found behind the inner liner) 2 mm forward



6. Fix the lamp unit



**REVISION:**

| Revision | Data    | Description       | Author | Approved by - on |
|----------|---------|-------------------|--------|------------------|
| 00       | 04/2011 | Document creation | PR     |                  |