

WATER ENTERING THE TUB WITH THE WASHING MACHINE TURNED OFF

In new washing machines, during the first month in operation it may be found that: with the appliance turned off (OFF) and the tap open, water enters the tub; this problem is due to foreign bodies that have become trapped between the solenoid valve membrane and body, or to the fact that the water pressure is below the minimum values of 0.05 MPa (0.5 bar), causing it to malfunction.

SOLENOID VALVE

ONE WAY



TWO WAYS



THREE WAYS

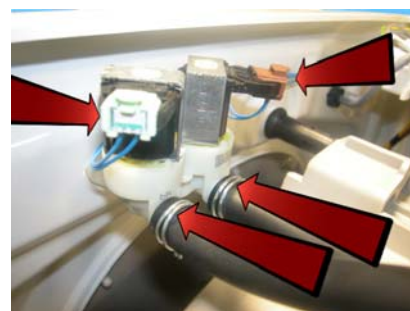


Solutions

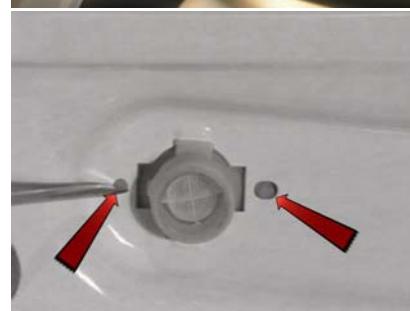
- A) If the user calls because the problem has occurred just once, advise him to run a short cycle on the appliance, so that the obstacle is removed when water flows through.
- B) If the user calls because the problem occurs repeatedly (cycle after cycle), it will be necessary to send a Service Technician to check the water pressure, which must be above the values indicated above. If the values are within the range indicated, replace the solenoid valve.

SERVICE INFORMATION

Unfasten the connectors and remove the pipes.



Unscrew the water loading pipe.
Use a screwdriver to press the two tabs locking the solenoid to the rear part of the appliance.
Turn it by 90° to extract it.



EN	Publication number	599 73 09-03	Rev. 00	06/2010	dmm
----	--------------------	--------------	---------	---------	-----