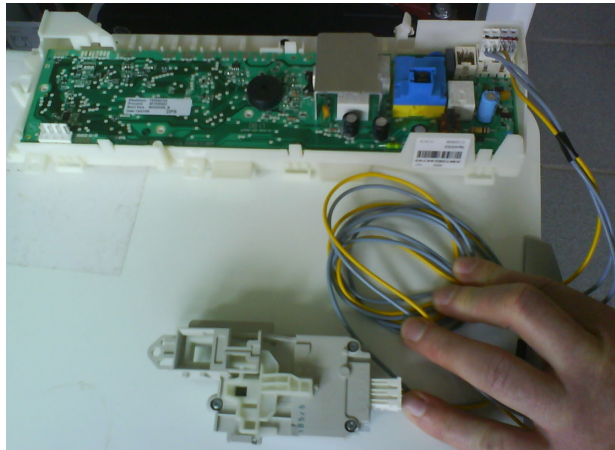


NEW DOOR LOCK HARNESS FOR TOP LOADED WASHING MACHINES.

DESCRIPTION OF PROBLEM:

Creation of sub-harness "door lock" to "main board" to avoid replacement of the whole harness and to give an appropriate solution for service engineer

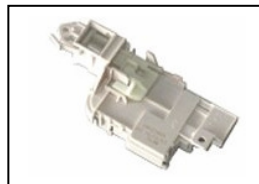


AFFECTED MODELS:

All models of top loaded washing machines with ENV06 electronic
Using following door locks:

IDOLO "immediate opening"

- 146 11 74 00 3
- 146 11 74 01 1
- 146 11 74 02 9
- 146 11 74 03 7
- 146 11 74 04 5



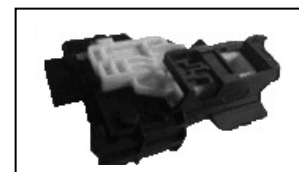
PTC "delayed opening" Bitron

- 129 74 79 03 0
- 129 74 79 04 8
- 129 74 79 05 5



OR

Rold



SOLUTION:

Change the sub-harness with the electrical part instead of the whole harness
Table below Indicates which door lock harnesses to be used with specific door lock device.

Door Lock Model	Harness part number	Display
IDOLO	146 92 65 01 9	With and without display
PTC	146 92 94 01 9	With display
	146 92 64 01 2	Without display

Harness reference added in the spare part list since May 2010 on new models published