





**WASHING MACHINE WITH STEAM GENERATOR**

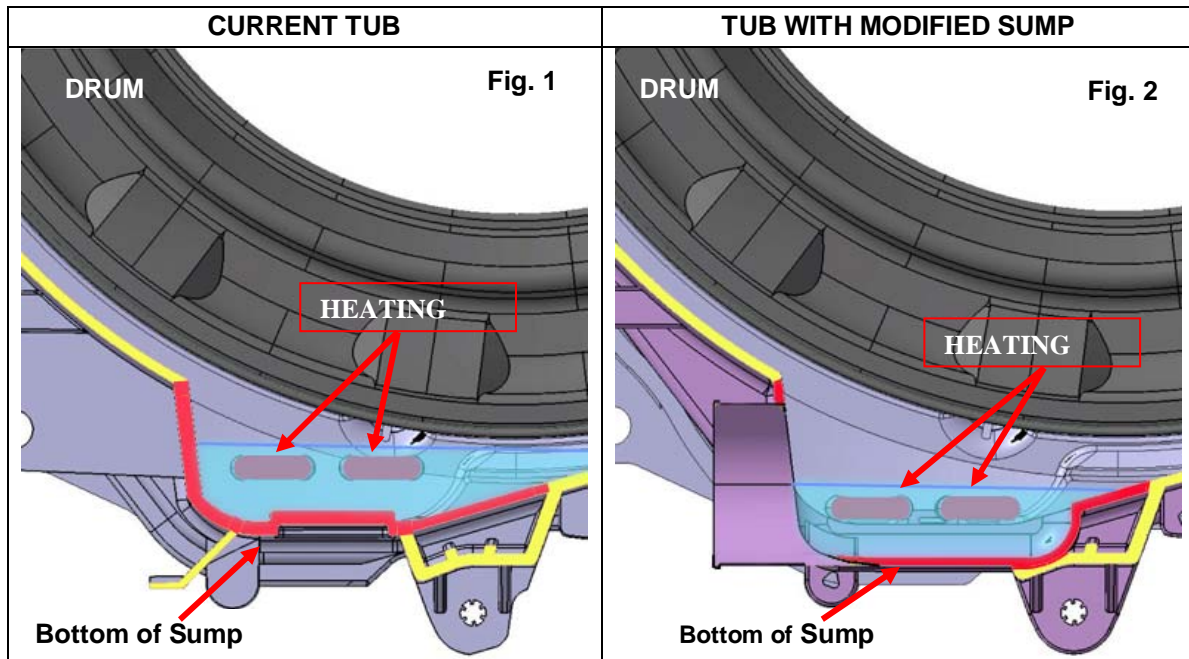
Starting from the month of April a new washing machine will be going into production with three new programmes: through the steam generated inside it, these will allow regeneration of the washing (decreasing, refreshing, eliminating smells, etc.).

PROGRAMMES		PROGRAMME SELECTOR
For cotton (de-creasing)		
For synthetics (de-creasing)		
refresh (eliminates smells)		

To obtain the steam it is necessary that: the heating element be completely submerged in the water, its temperature reaches 60°/75°C and when loading water and during movement of the drum the washing does not get wet.

As can be seen from fig. 1, in the present welded unit assembly the position of the heating element is too close to the drum, and the amount of water necessary to submerge it might result in water entering the drum during movement, with the risk of wetting the washing.

Fig. 2 shows the changes made to the welded unit assembly to generate steam: the bottom of the sump has been lowered and the position of the heating element likewise, so that the amount of water necessary to generate steam does not come into contact with the drum. To the side of the sump is the welded unit assembly drain, unlike the other versions where it is located at the bottom of the tub.



EN	Publication number	<b>599 72 94-50</b>	Rev. 00	04/2010	dmm
----	--------------------	---------------------	---------	---------	-----

## SERVICE INFORMATION

- Washing is wet at end of cycle

In the event of any complaints that the washing is wet at the end of the cycle (in one of the three programmes), it is recommended that you check the appliance has been properly levelled.

- Problems with drain

In the event of any problems with the drain, check that the strap supporting the drain pipe is not broken, or that the sponge (indicated by the arrow) is not worn, because if the former is broken and the latter worn the level of the pipe will drop; this will result in an air lock inside the pipe and therefore inefficient drainage.

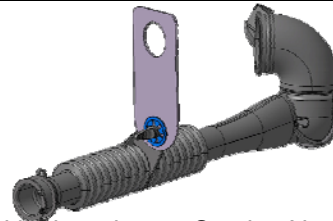


## COMPONENTS:

As well as the new welded unit assembly, a new heating element will be fitted. This is shorter than the current one, nickel-treated, with a lower power and fitted with thermal fuses and NTC.

Drawing	NTC	Volt	Watt	Colour	Material	Thermal fuse
	YES	230	1750	GREEN	AISI 304L NICKEL COATING	YES

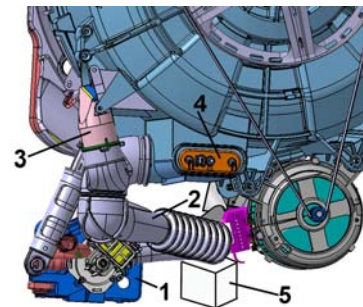
New drain pipe between tub and pump body.



The codes for the new components in the appliance can be found in the relevant Service Notes.

## ACCESS

1. Pump body assembly
2. Drain pipe
3. Pressure connector bell
4. Heating element
5. Sponge



**Heating element:** after disconnecting the power supply connectors and the NTC probe connector, unscrew the nut at the centre and extract it.



- **When replacing any component, always refer to the code indicated in the list of spare parts for the appliance in question.**
- **Tampering with the heating element in any way is strictly prohibited!!! (e.g. changing the NTC probe, etc...)**

**Drain pipe:** loosen the screw on the hose clamp fixing it to the tub, open the hose clamps fixing it: to the pressure connector bell and to the filter body assembly.



**Heating element support spring:** in the event of breakage, this can be replaced through the tub drainage opening.