

EXCESSIVE FORMATION OF ICE/CONDENSATION

DESCRIPTION:

Refrigerators in general present the following problem:

- Excessive formation of condensation within the refrigerator
- Excessive formation of ice within the freezer compartment

The fault is due to a possible infiltration of air into the appliance through the joints in the various components, such as cooling compartments, side walls, crossbars, seals, etc.

SOLUTION:

To solve the problems described above you must first of all check that the magnetic door seals are undamaged and sealing properly, after which you must seal the perimeter of the frame carefully (Figures A, B, C and D) using the sealant code 4055071353 .



Warning: the sealant indicated is specifically designed for use in refrigerators, and is certified for use with foodstuffs.
Do not use other, unapproved sealants!

Figure A

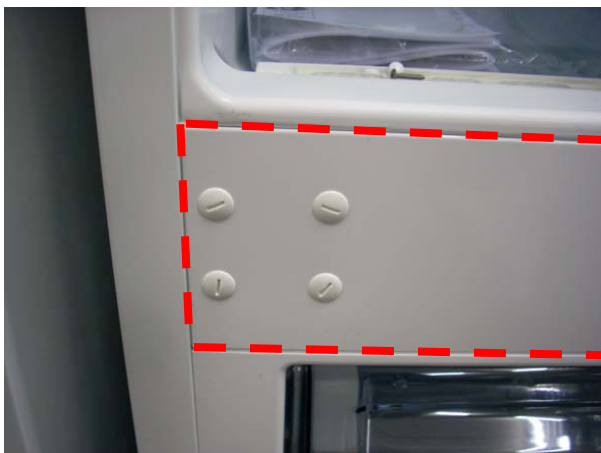


Figure B

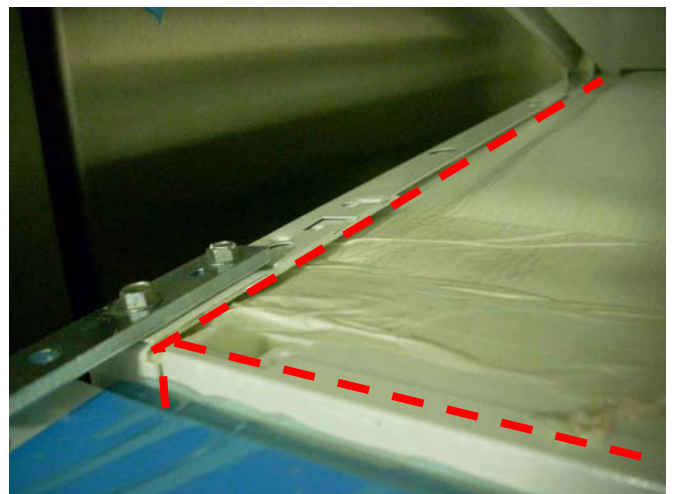


Figure C



Figure D

