

SERVICE BULLETIN

Stocko IDC power connector

DESCRIPTION:

From October 2008 (Serial Number 841xxxx) new electronic board assemblies have been introduced. The plastic body box has been extended; a new cover has been put on the power connector, thus improving the connection safety.

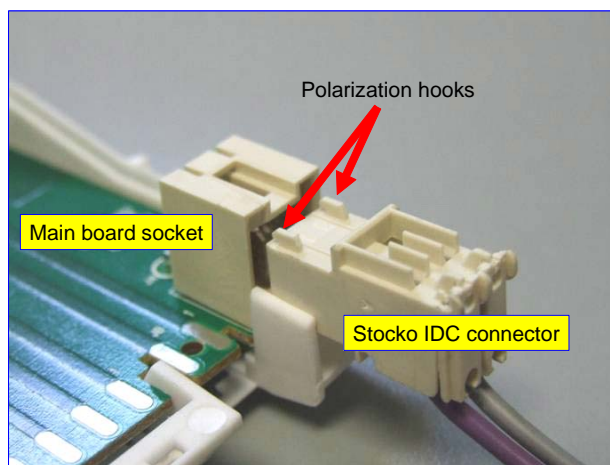
OLD

NEW



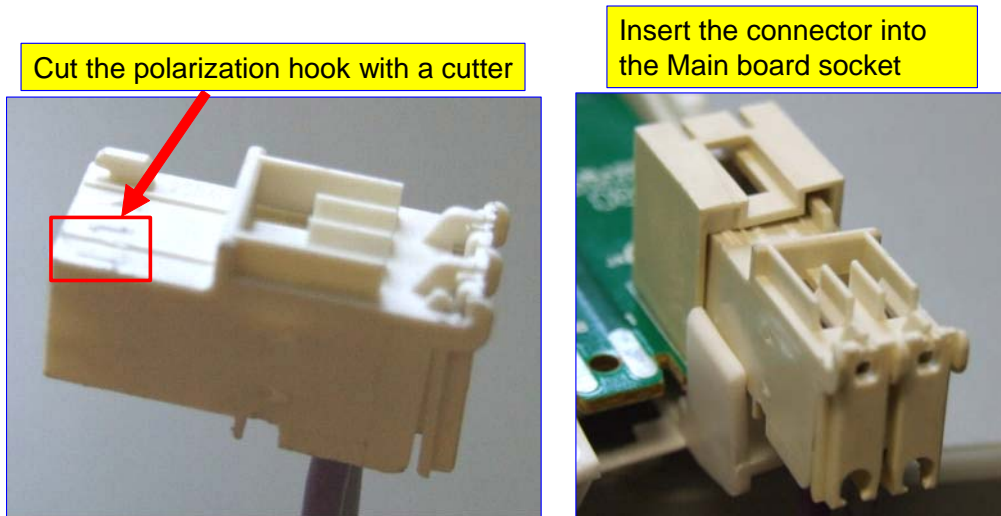
INTECHANGEABILITY:

The new main boards are interchangeable with the old ones **but** the Stocko IDC power connector was polarized.

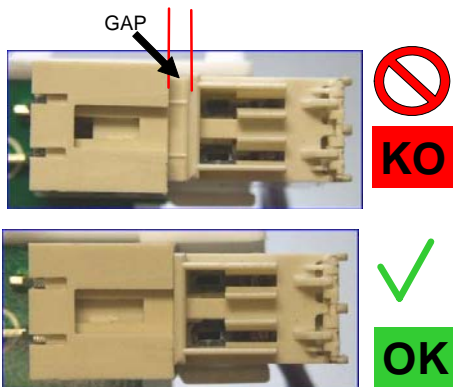


SOLUTION:

To cut one polarization hook on the body, also on appliances where is present on the cable the Stocko IDC power connector. The Stocko IDC connector has been used in production from may 2005 to April 2008.

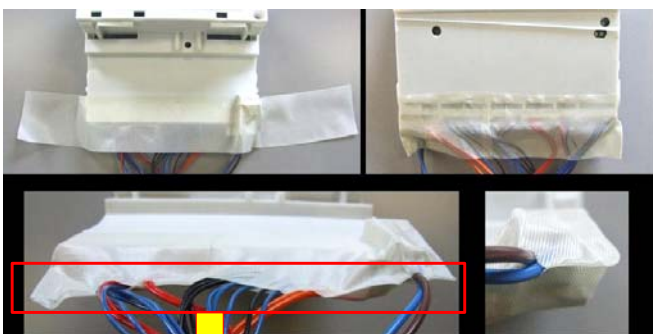


IMPORTANT:



WARNING

The connector must be fully inserted in the Main Board socket to avoid any risk of overheating/fire. This is valid for any kind of connector.



To avoid any further kind of risk, apply the adhesive tape protection Spare part code 117 17 00-00/6

THE FRONT AND THE REAR LAYERS OF THE ADHESIVE FOIL, MUST BE GLUED TOGETHER