

M2 Cookers

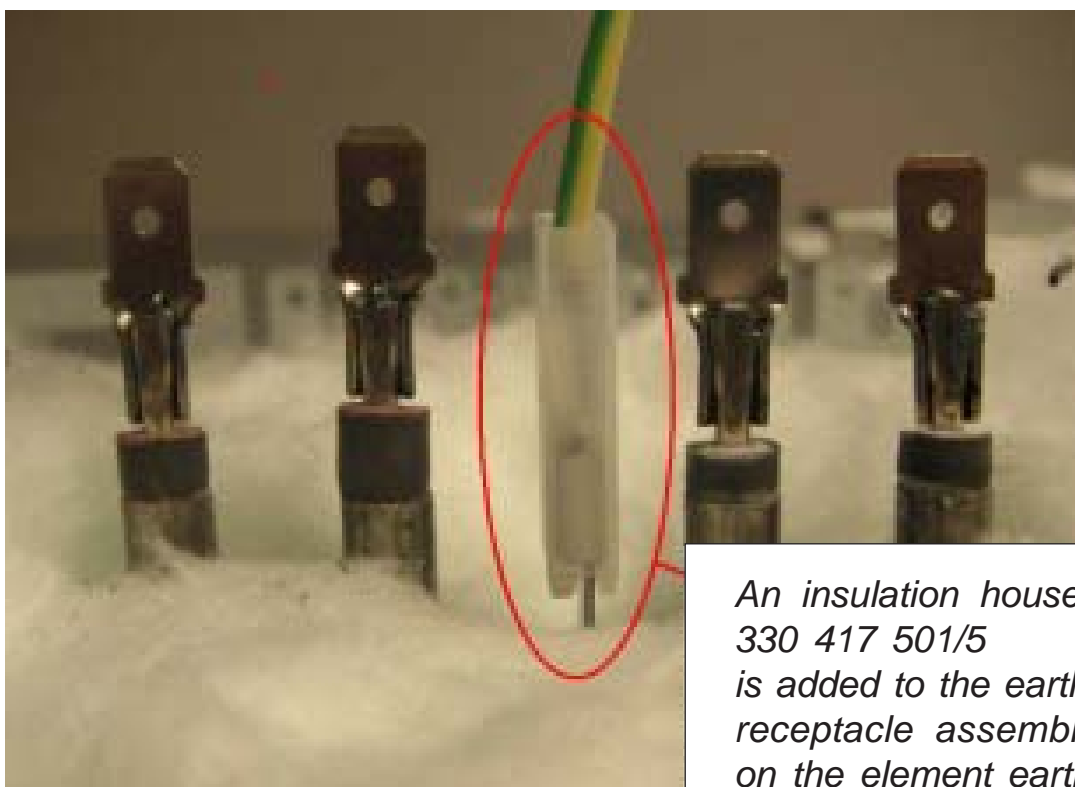
599 530 167 EN

Subject: Longer earth connection on top elements
349465201/3 - 349465202/1

Models: All M2 cookers from Motala.

An insulation house 330 417 501/5 must be added to the receptacle before it is assembled on the element earth connection.

This must be done to stop contact between the receptacle and the element ends.



*An insulation house
330 417 501/5
is added to the earth
receptacle assembled
on the element earth
connection.*