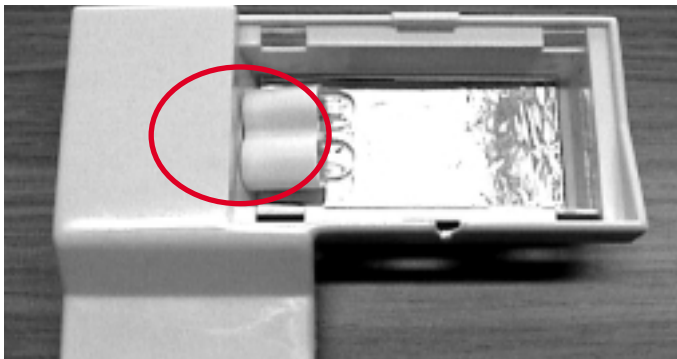


**RH 3XXL/LD, RH 4XXL/LD, EA 3XXL/LD**

**Light bulbs replaced by LEDs**



**Lighting complete**

180-250V till 17.08.1998 (Serial-Nr. 833...)

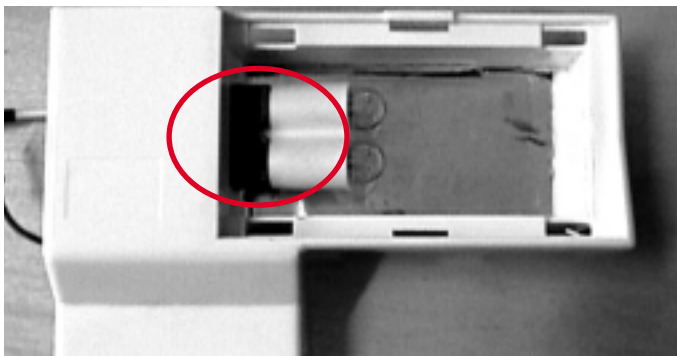
100-140V till 18.09.1998 (Serial-Nr. 833...)

In this cases the bulbs **cannot be** replaced by LEDs.  
Replace the complete lighting!

**LED-lighting complete**

180-250V, spare part number 241 2356-03/8

100-140V, spare part number 241 2356-13/7



**Lighting complete**

180-250V from 17.08.1998 on (Serial-Nr. 833...)

100-140V from 18.09.1998 on (Serial-Nr. 833...)

In this case the bulbs **can be** replaced by LEDs.

**LED**

180-250V, spare part number 295 2887-00/4

100-140V, spare part number 295 2887-10/3