



**THIS DOCUMENT UPDATES AND REPLACES THE  
PREVIOUS ONE WITH SAME NUMBER**

© ELECTROLUX HOME PRODUCTS  
Corso Lino Zanussi,30  
I - 33080 PORCIA /PN (ITALY)  
Tel +39 0434 394850  
Fax +39 0434 394096

Publication  
number

**599 37 14-84**

IT/SERVICE/FV

**Built-in ovens and  
Cookers**

**GENERAL  
TROUBLESHOOTING  
PROCEDURE  
KRONOS**

**(OVC1000)**

SOI

Edition: 03.2008 – Rev. 01



# CONTENTS

<b>1 - INTRODUCTION</b>	page	4
1.1 - PURPOSE OF THIS MANUAL	page	4
1.2 - ESD	page	4
<b>2 - DIAGNOSTICS AND APPROACH TO THE SYSTEM</b>	page	5
2.1 - ERROR CODE DISPLAY	page	6
2.2 - MEMORISATION OF ERROR CODES	page	6
<b>3 - GENERAL BLOCK DIAGRAM</b>	page	6
<b>4 - ERROR CODES</b>	page	7
<b>5 - TROUBLESHOOTING WITH ERROR CODE ON NORMAL OVENS</b>	page	8
<b>6 - TROUBLESHOOTING WITHOUT ERROR CODE ON NORMAL OVENS</b>	page	10
<b>7 - TROUBLESHOOTING WITH ERROR CODE ON PYRO OVENS</b>	page	17
<b>8 - TROUBLESHOOTING WITHOUT ERROR CODE ON PYRO OVENS</b>	page	20
<b>9 - VARIANT FOR MODELS WITH LIGHT BAR</b>	page	25
<b>10 - DIAGNOSTICS CYCLE</b>	page	26
9.1 - DIAGNOSTICS ON LEVEL 2 CONTROL UNIT NORMAL	page	26
9.2 - DIAGNOSTICS ON LEVEL 2 CONTROL UNIT PYRO	page	28
9.3 - DIAGNOSTICS ON LEVEL 3 CONTROL UNIT NORMAL	page	31
9.4 - DIAGNOSTICS ON LEVEL 3 CONTROL UNIT PYRO	page	33
<b>11 - FUNCTIONAL DIAGRAMS</b>	page	36
11.1 - FUNCTIONAL DIAGRAMS NORMAL OVEN	page	36
11.1.1 - FUNCTIONAL DIAGRAM LEVEL 2 NORMAL OVEN	page	36
11.1.2 - FUNCTIONAL DIAGRAM LEVEL 2 NORMAL OVEN WITH LIGHT BAR	page	37
11.1.3 - FUNCTIONAL DIAGRAM LEVEL 3 NORMAL OVEN	page	39
11.2 - FUNCTIONAL DIAGRAMS PYROLYTIC OVEN	page	40
11.2.1 - FUNCTIONAL DIAGRAM LEVEL 2 PYROLYTIC OVEN	page	40
11.2.2 - FUNCTIONAL DIAGRAM LEVEL 2 PYROLYTIC OVEN WITH LIGHT BAR	page	41
11.2.3 - FUNCTIONAL DIAGRAM LEVEL 3 PYROLYTIC OVEN	page	43
<b>12 - TESTS ON COMPONENTS</b>	page	39
12.1 - TESTING THE TEMPERATURE SENSOR	page	39
12.2 - TESTING THE POWER ABSORPTION	page	40
12.3 - TESTING THE POWER BOARD	page	40
12.4 - RELEASING THE DOOR MANUALLY	page	41
12.4.1 - RELEASING THE DOOR MANUALLY ON ACCESS OVENS	page	46
12.4.2 - RELEASING THE DOOR MANUALLY ON ACCESS PLUS OVENS	page	47
12.4.2.1 - HOLE POSITION ON MODELS WITH TRADITIONAL DOOR OPENING AND LEFT HINGED DOOR	page	47
12.4.2.2 - HOLE POSITION ON MODELS WITH RIGHT HINGED DOOR	page	47
12.4.2.3 - RELEASING THE "METEOR" DOOR LOCK	page	48
12.4.2.4 - RELEASING THE "ELTEK" DOOR LOCK	page	48
12.5 - TESTING THE DOOR LOCK	page	49
<b>13 - ACCESS/KRONOS: ORGANIZATION OF SERVICE MANUALS</b>	page	50
<b>14 - REVISIONS</b>	page	51

## 1 - INTRODUCTION

This troubleshooting procedure for the KRONOS system is intended to be used with reference to the basic information contained in the theoretical Service Manual (code 599 37 14 83), with the addition of flow charts, block diagrams and referring to any error codes that might be shown on the display.

### 1.1 - PURPOSE OF THIS MANUAL

The purpose of this Manual is to provide a general outline of an efficient troubleshooting procedure for the new KRONOS system.

This Manual contains the general information necessary to perform the troubleshooting procedure.

In relation to the various applications / personalizations, a brief Service Note will be issued describing the differences between the various applications.

### 1.2 - ESD - ELECTROSTATIC DISCHARGE AND ITS EFFECT ON THE COMPONENTS

The interface for the control unit is not fitted with an internal device to protect against electrostatic discharge. When effecting repairs, therefore, the service engineer must check for stabilization of the potential on the oven casing (i.e. discharge any static electricity by touching the oven casing) in order to prevent the possibility of overload, which might damage the control unit.

The same care is necessary when handling control units supplied as spare parts (i.e. not yet fitted to the oven), which must be removed from the protective bag in ESD only after stabilizing the potential (i.e. discharging any static electricity) and only then installed in the appliance.

**Important:** The theory behind the process of electrostatic charge and discharge is not discussed in this Manual, since the tangible effects are considered to be more important. However, the effects are felt frequently when touching a metal handle and feeling the electrostatic discharge in the form of a minor shock.

But what happens when stabilization of the potential takes place with semi-conductor components (i.e. components on a circuit board, such as integrated circuits, microprocessors etc.)?

Stabilization of the potential takes place across the internal structure of the component. This does not necessarily lead to the immediate destruction of the component; subsequent malfunctions across damaged internal connections may be more harmful, and these occur only as a result of overheating or current overloads.

It is true that almost all sensitive semi-conductor components (such as MOS circuits) have been improved by the addition of protective measures, but the internal structures of these components are today smaller than, for example, ten years ago, which tends to increase their sensitivity to the previous levels.

#### **Important!**

Which components are susceptible to damage by static electricity during repairs?

All circuit boards featuring accessible control and command connections (door switches, food probes etc.), bare tracks and microprocessors, as well as any other circuits with free access.

#### **Examples:**

- Programmers with accessible connections for the food probe and the door switch.
- Programmers whose control processors are accessible (due to their high costs, the protective systems are only partial).
- W.O.E.C. control units.
- S.O.E.C. control units.
- C.H.E.C. control units.
- KRONOS control units
- R.H.E.A control units.

## 2 - DIAGNOSTICS AND APPROACH TO THE SYSTEM

In view of the diversified nature and the flexibility of the system, it is necessary to adopt a method of approach to each specific type of fault.

In other words, it is important to identify in detail the phenomena that take place when a fault occurs by attempting to correctly interpret the user's complaint.

For example, if the user makes a service call because the "oven is off", this may be due to:

- The oven does not switch on.
- The oven switches on for a few moments and then switches off.
- The display is lit but the oven does not heat.

Even in an oven with a traditional programming system, these three phenomena require three different approaches to locating the fault.

In a more complex system such as Kronos, it is even more important to correctly interpret the phenomena that occur.

In order to facilitate the process of identification, it is necessary to subdivide the system into separate blocks and then to identify the block in which the fault has occurred.

A first classification may be as follows:

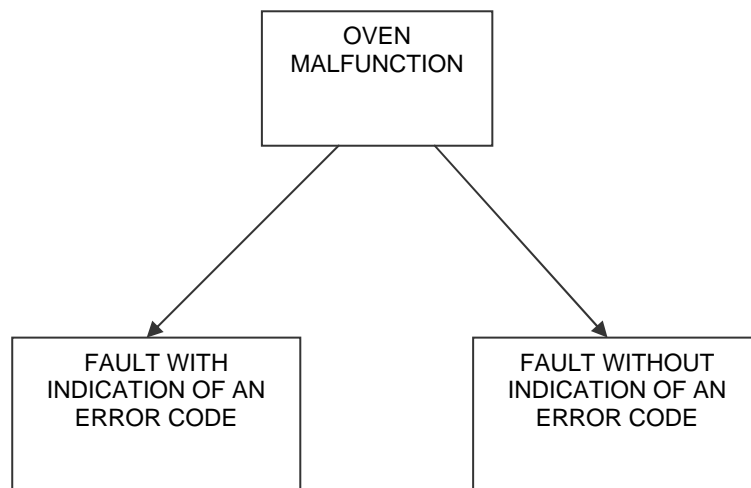


Fig. 1

If the fault is accompanied by an error code, it is easier to identify.

As explained in greater detail in sections 5, 7 and 9, the appearance of an error code indicates a situation that has been detected by the system.

## 2.1 – ERROR CODE DISPLAY

The normal flow of information governed by the microcontroller is monitored by an internal programme; in the event of certain malfunctions, the relative information is shown on the display in the form of an error code.

## 2.2 – MEMORISATION OF ERROR CODES

The data relative to the error code are memorized in one of the registers in the microcontroller. When an error code is displayed, the oven switches off. To reset the error code, switch the oven off and then on.

## 3 - GENERAL BLOCK DIAGRAM

In order to facilitate troubleshooting, especially when no error code is displayed, it may be useful to represent the system in the form of a block diagram.

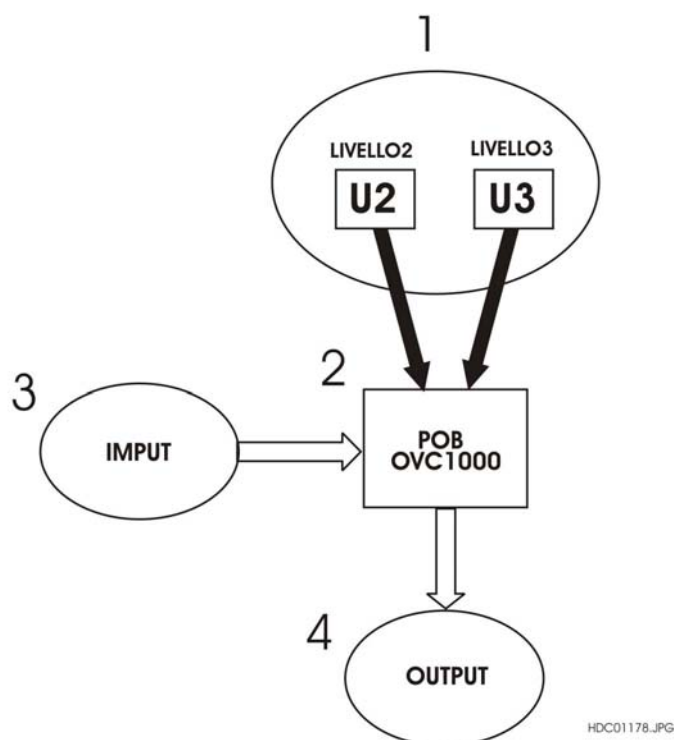


Fig. 2

- 1 - User interface (control units 1, 2 and 3)
- 2 - Power board OVC1000
- 3 - Input devices (sensors)
- 4 - Output devices (power loads)

- The user interfaces (1) are the various control units including the control interfaces (if present).
- The power board receives information from the control units and signals from the input devices (3) in order to control the output devices (4).
- The input devices are sensors which transfer to the system any variations in temperature, as well as thermostats (in some models) which guarantee user safety in case of overheating.
- Out devices include the heating elements, the oven light and the various motors (oven fans, rotary spits, and if present, the door lock).

## 4 - ERROR CODES

The KRONOS system performs an internal autodiagnosics routine and, when a malfunction is detected, displays the corresponding error code.

The error code is shown on the display as shown in the figures relative to the various levels (see fig. 3, 4).

The table below describes the various error codes:

ERROR CODE	DESCRIPTION OF THE CAUSE
F02	Door lock system (featured only on pyrolytic ovens).
F03	EEPROM Memory on Control Unit.
F04	Oven sensor temperature range exceeded (condition occurs for more than 5 seconds).
F05	Temperature safety limit exceeded > 350°C on normal ovens. > 530°C on pyrolytic ovens. (condition occurs for more than 10 seconds).
F08	Communication interruption between Control unit and power board.
F09	Software compatibility between Control unit and power board.
F10	Faulty triac (on power board)

Examples of the way in which error codes are displayed are shown below:

Example of error code (F05) on level 2 control unit

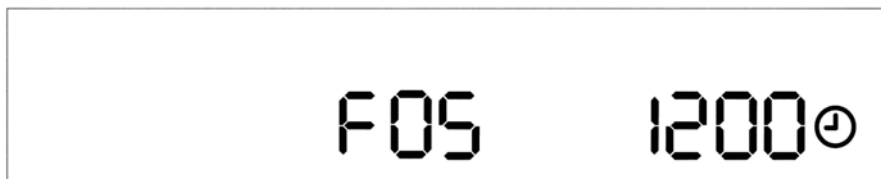


Fig. 3

HDC01138.JPG

Example of error code (F05) on level 3 control unit



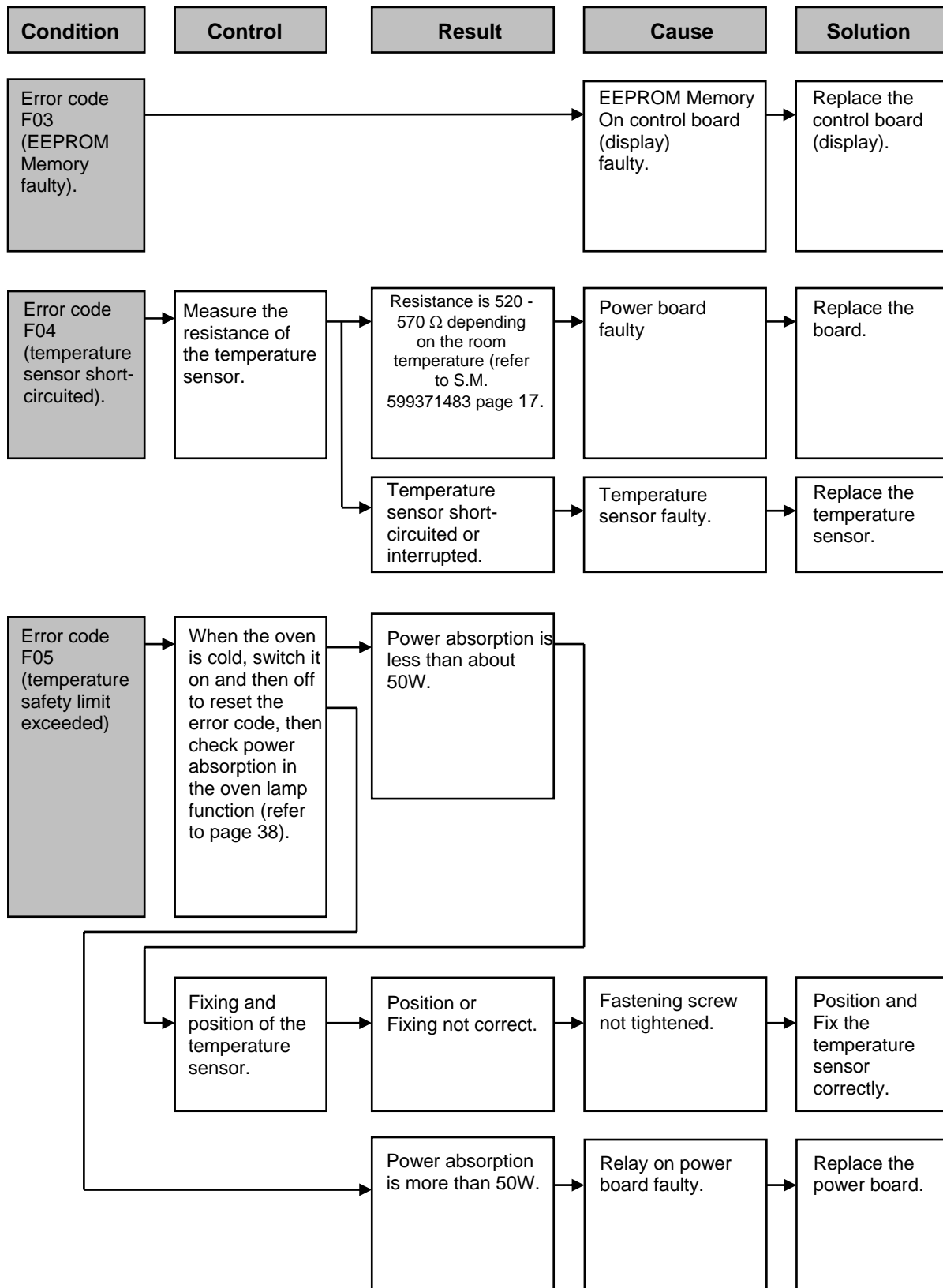
Fig. 4

HDC001139.JPG

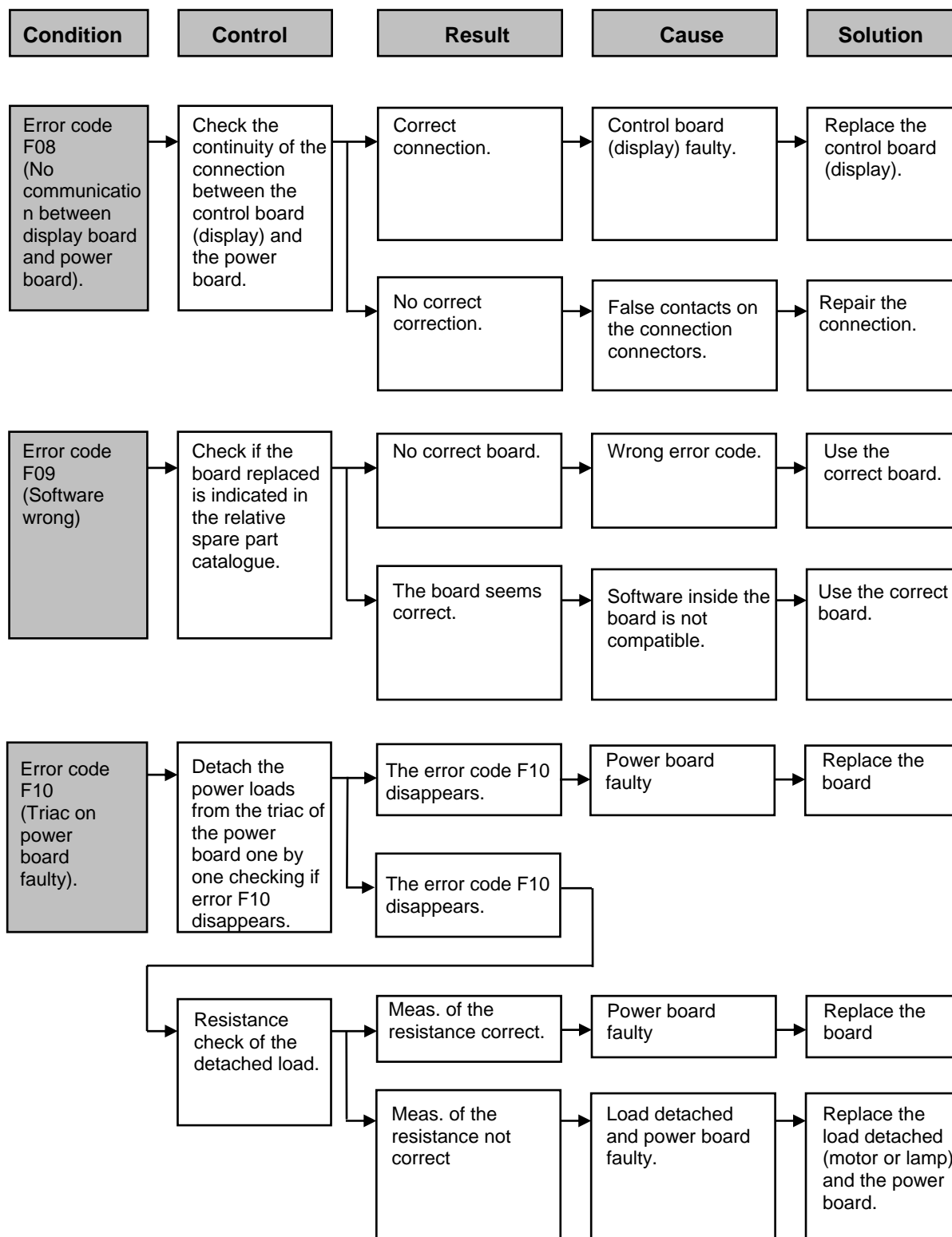
## 5 - TROUBLESHOOTING USING ERROR CODES ON NORMAL OVENS

Troubleshooting based on error codes helps to identify the component or a specific section of the circuitry in the appliance.

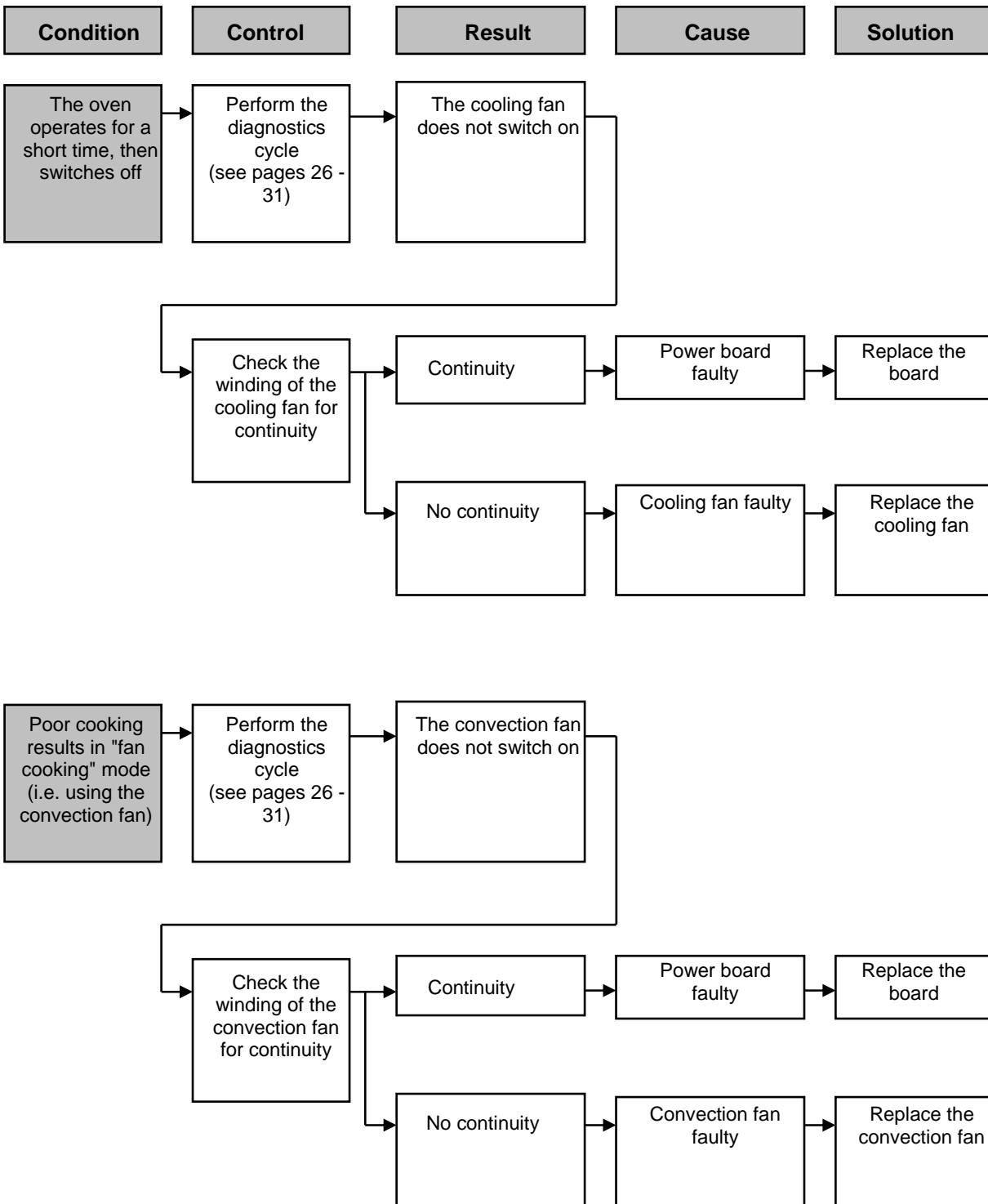
When a malfunction is detected by the control circuit, the appliance shows the error code on the display and then switches off.

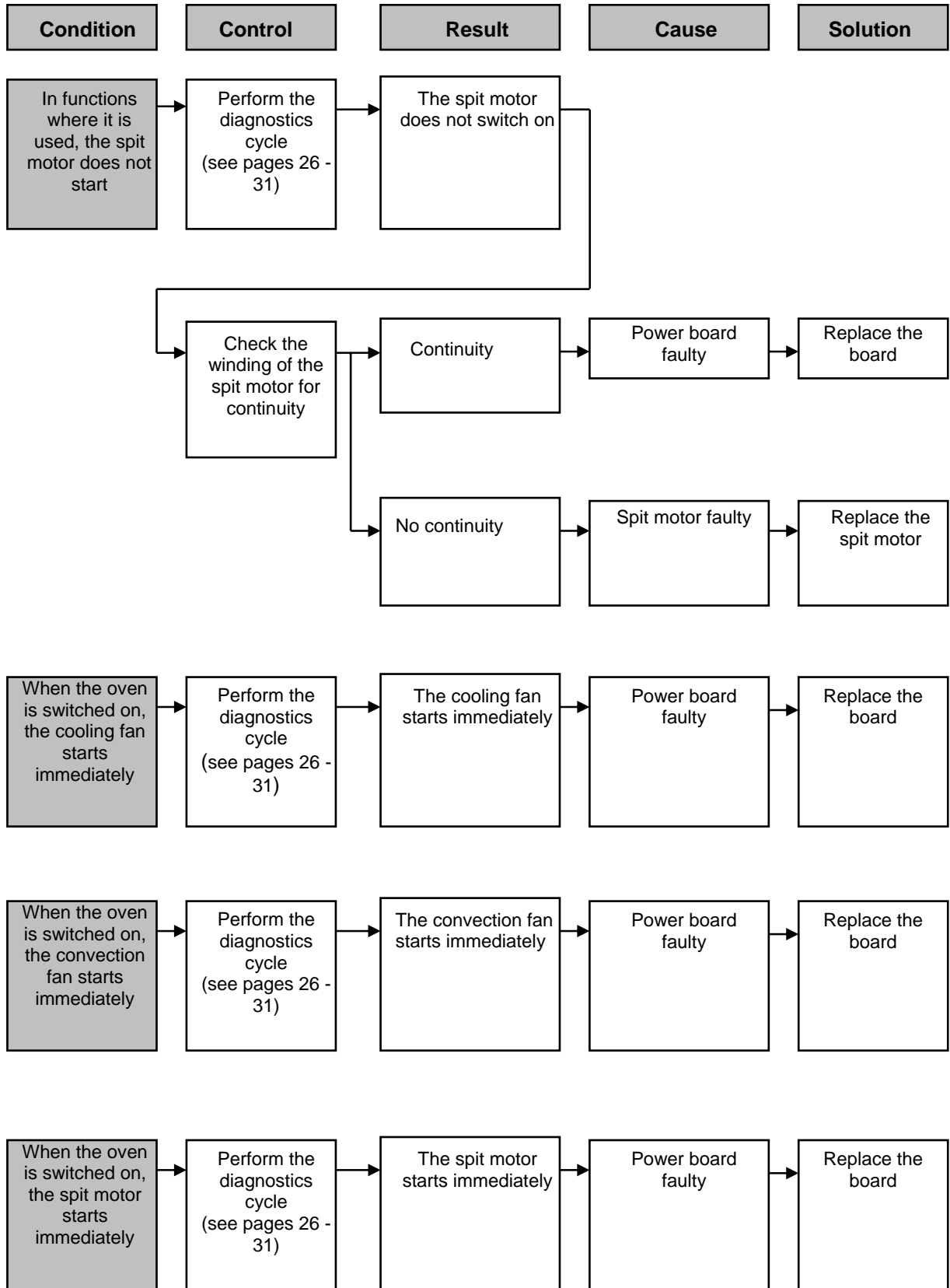


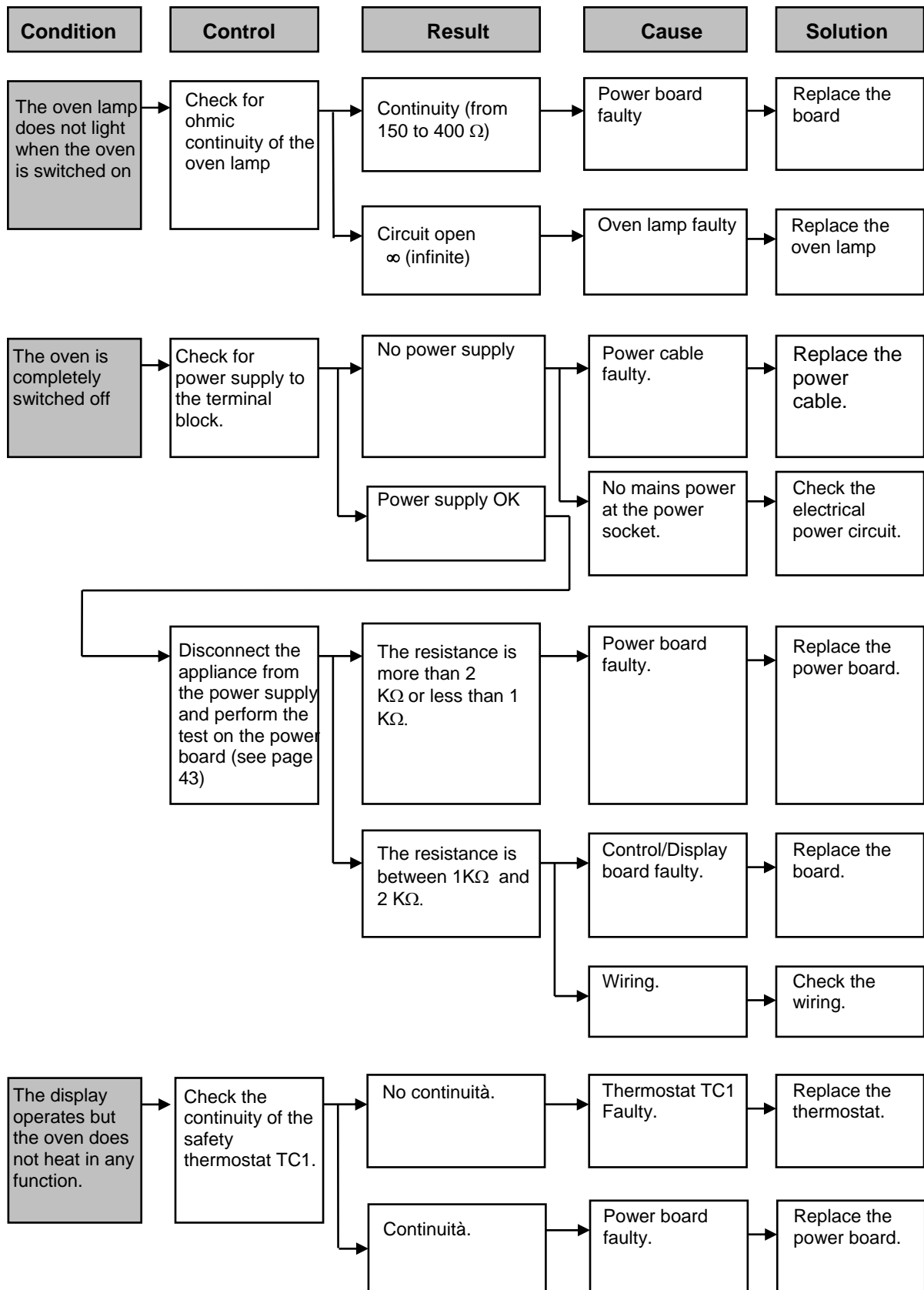


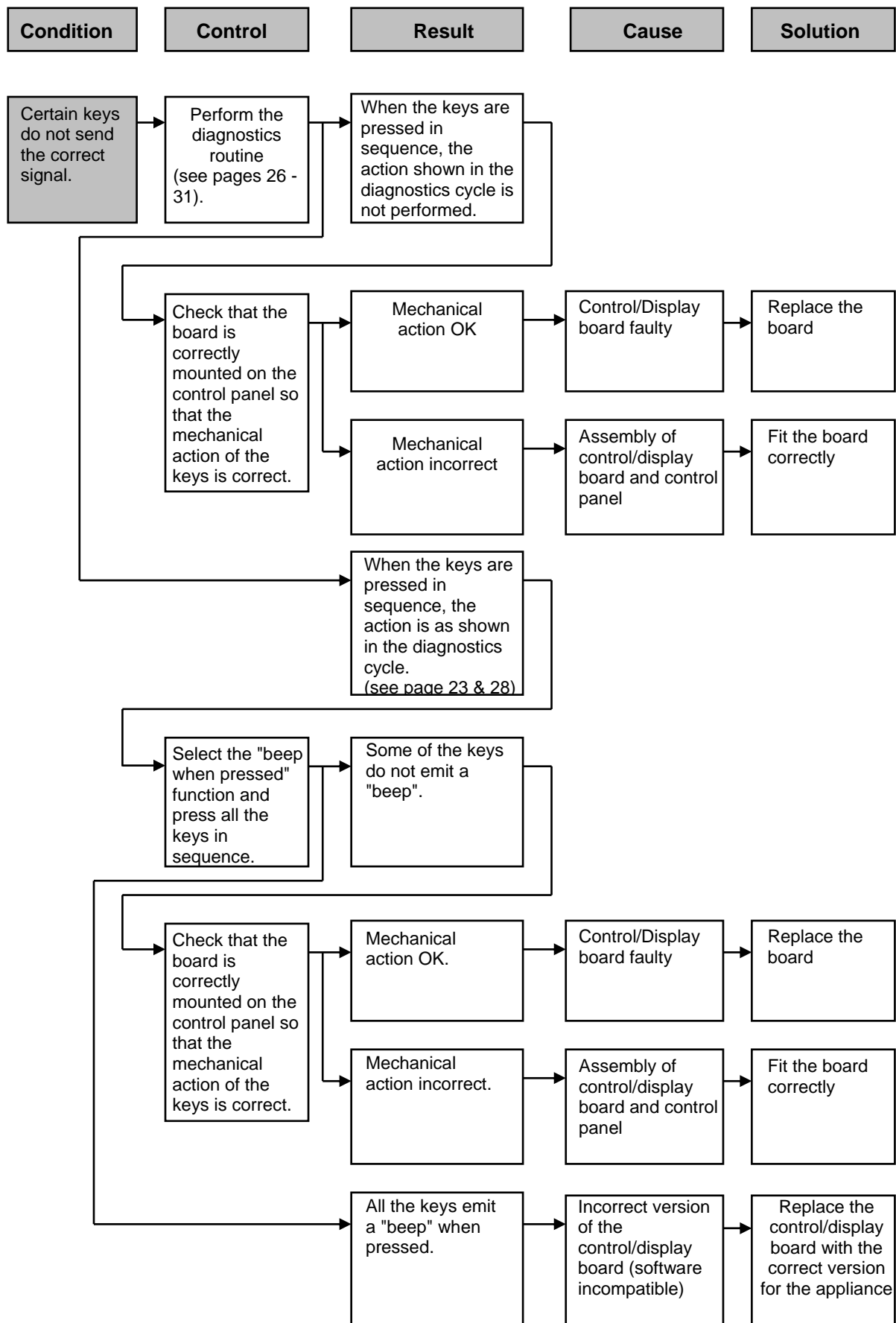


## 6 - TROUBLESHOOTING WITHOUT ERROR CODES









Condition	Control	Result	Cause	Solution
-----------	---------	--------	-------	----------

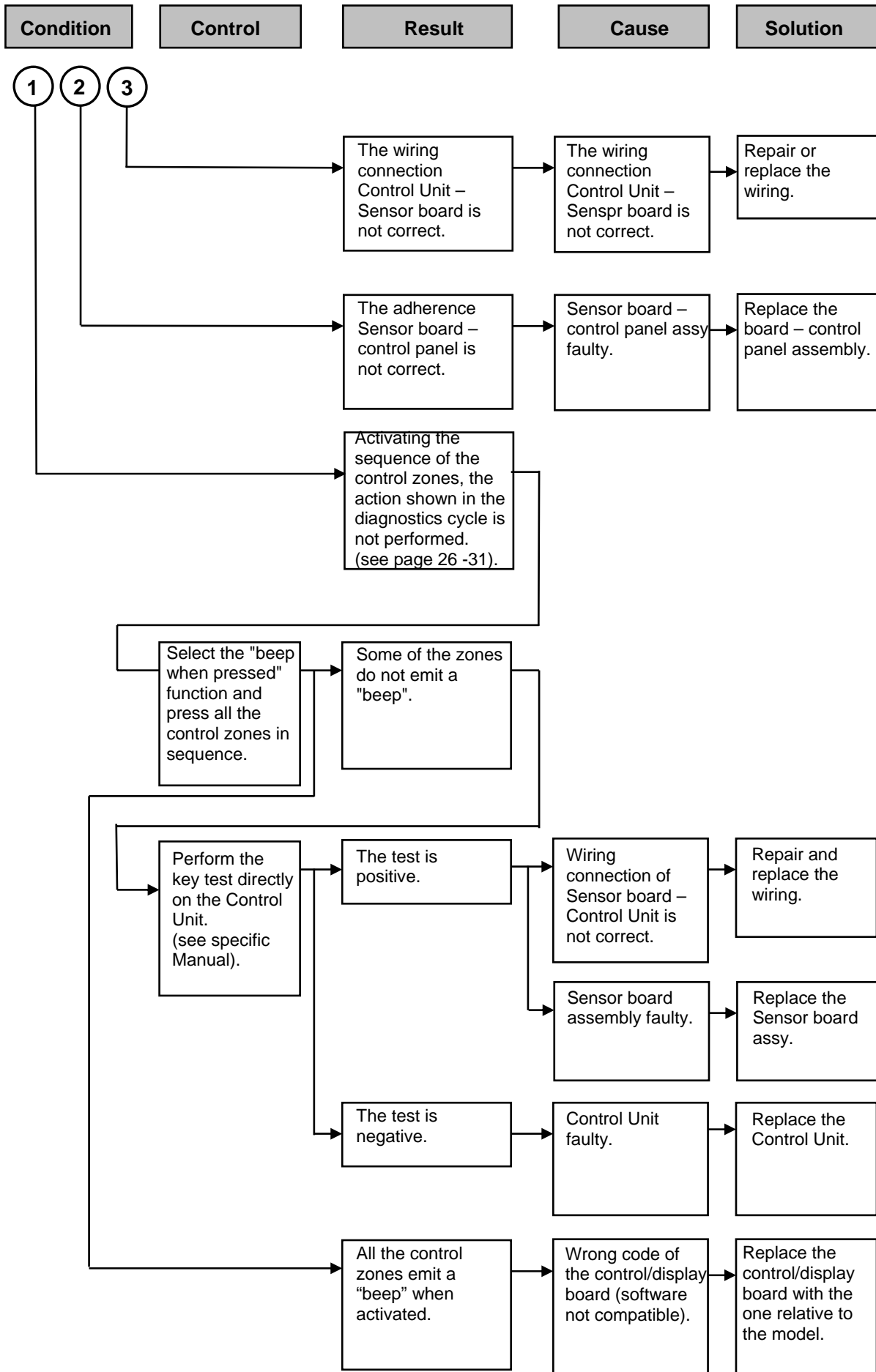
Some control zones do not send the signal (only for Touch models).	Perform the diagnostics routine (see page 26 - 31).	Activating the sequence of the control zones, the action shown in the diagnostics cycle is not performed (see page 25).		
--	---	---	--	--

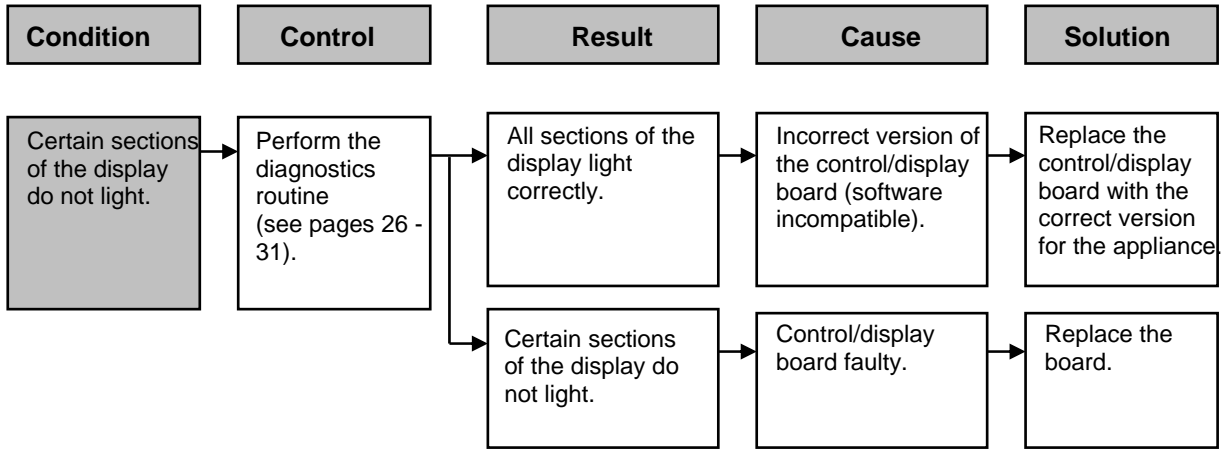
Check that the sensor board is correctly mounted on the control panel so that they adhere perfectly	The adherence board – control panel is correct			
---	--	--	--	--

Check that the connection of the Control Unit – Sensor Board wiring is correct	The connection is correct			
--	---------------------------	--	--	--

Perform the key test directly on the Control Unit. (see specific Manual).	The test is positive	Wiring connection Sensor board – Control Unit not correct.	Repair or replace the wiring
		Sensor board assy faulty	Replace the Sensor board assembly
	The test is negative	Control Unit faulty	Replace the Control Unit

- 1
- 2
- 3



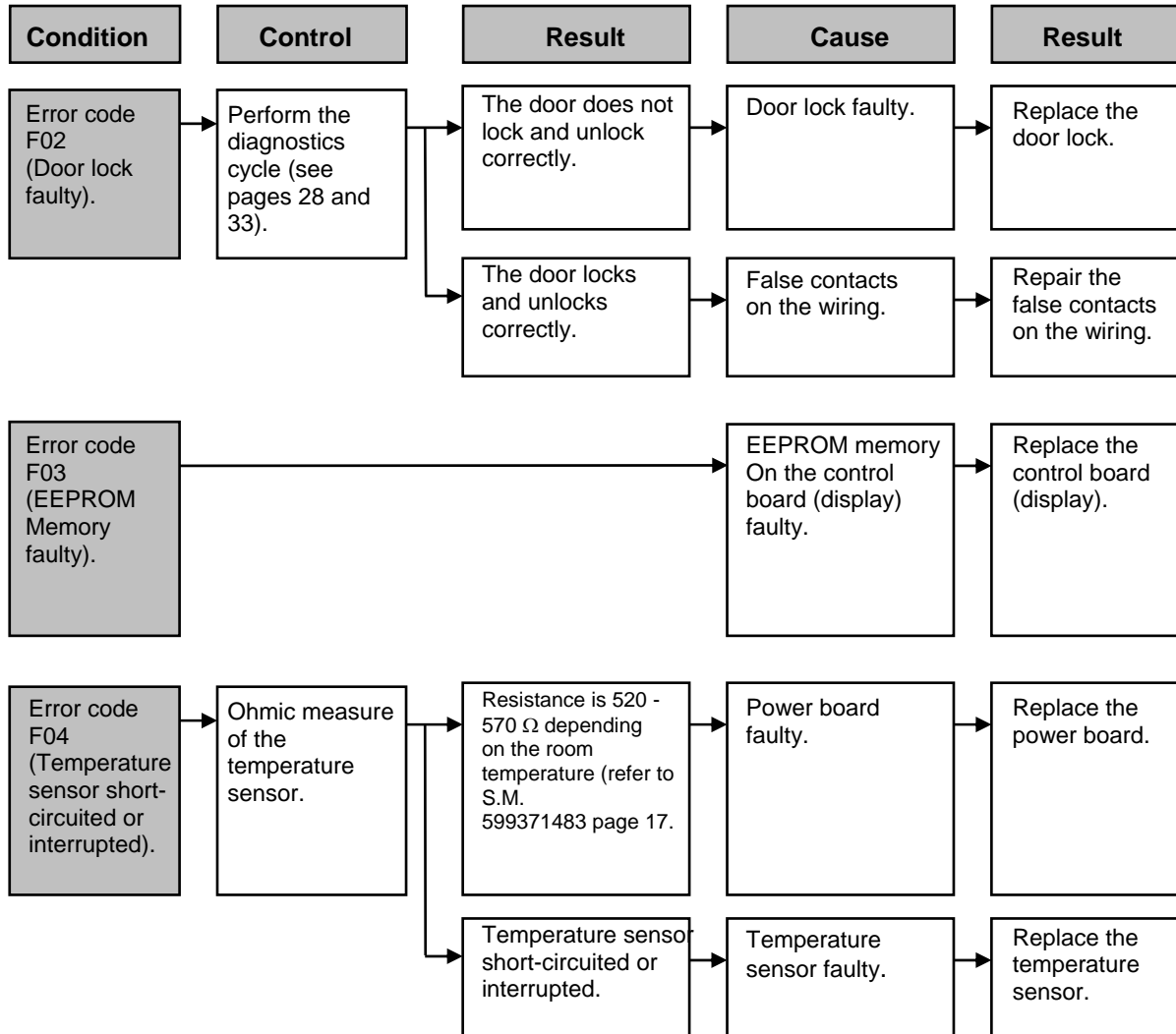


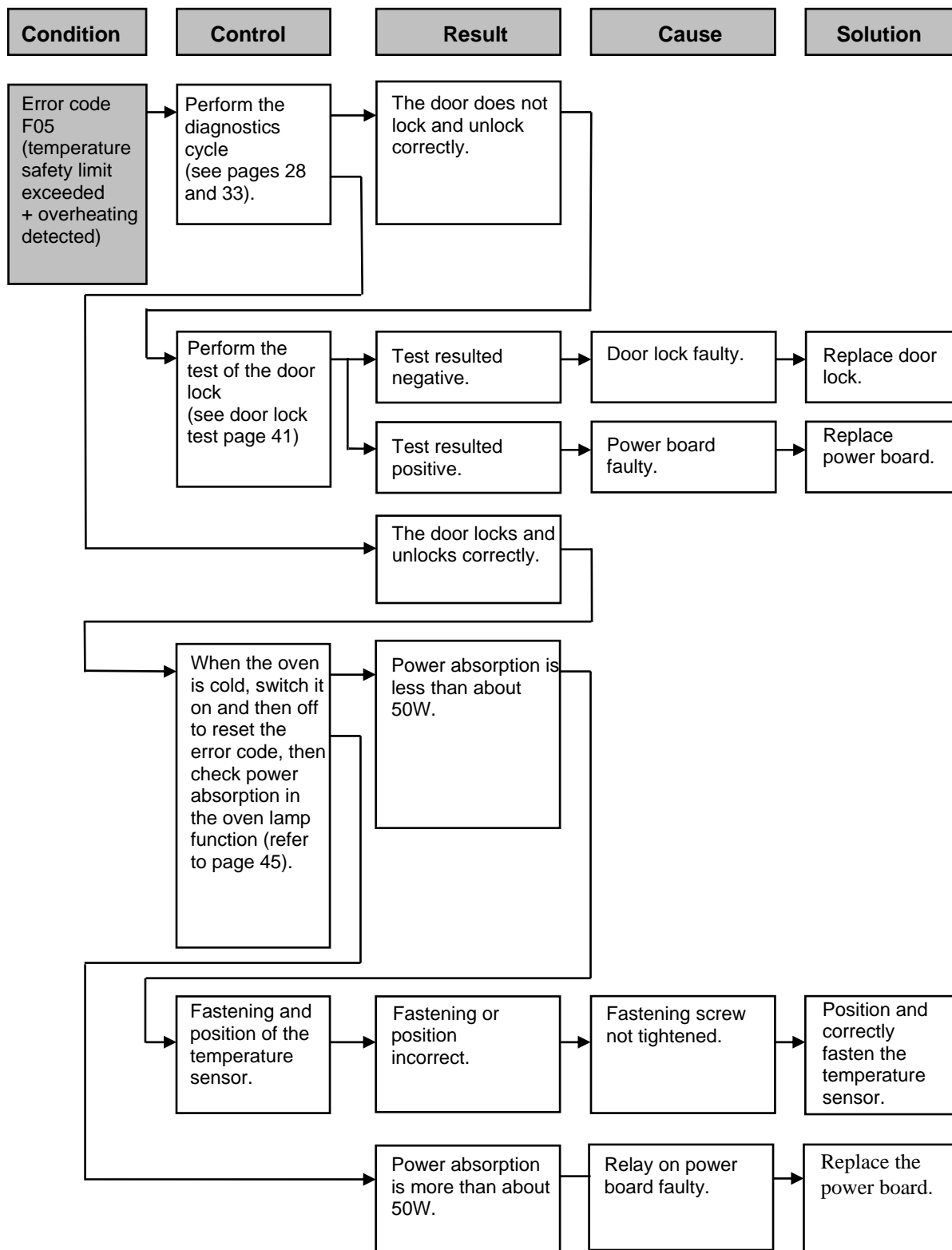


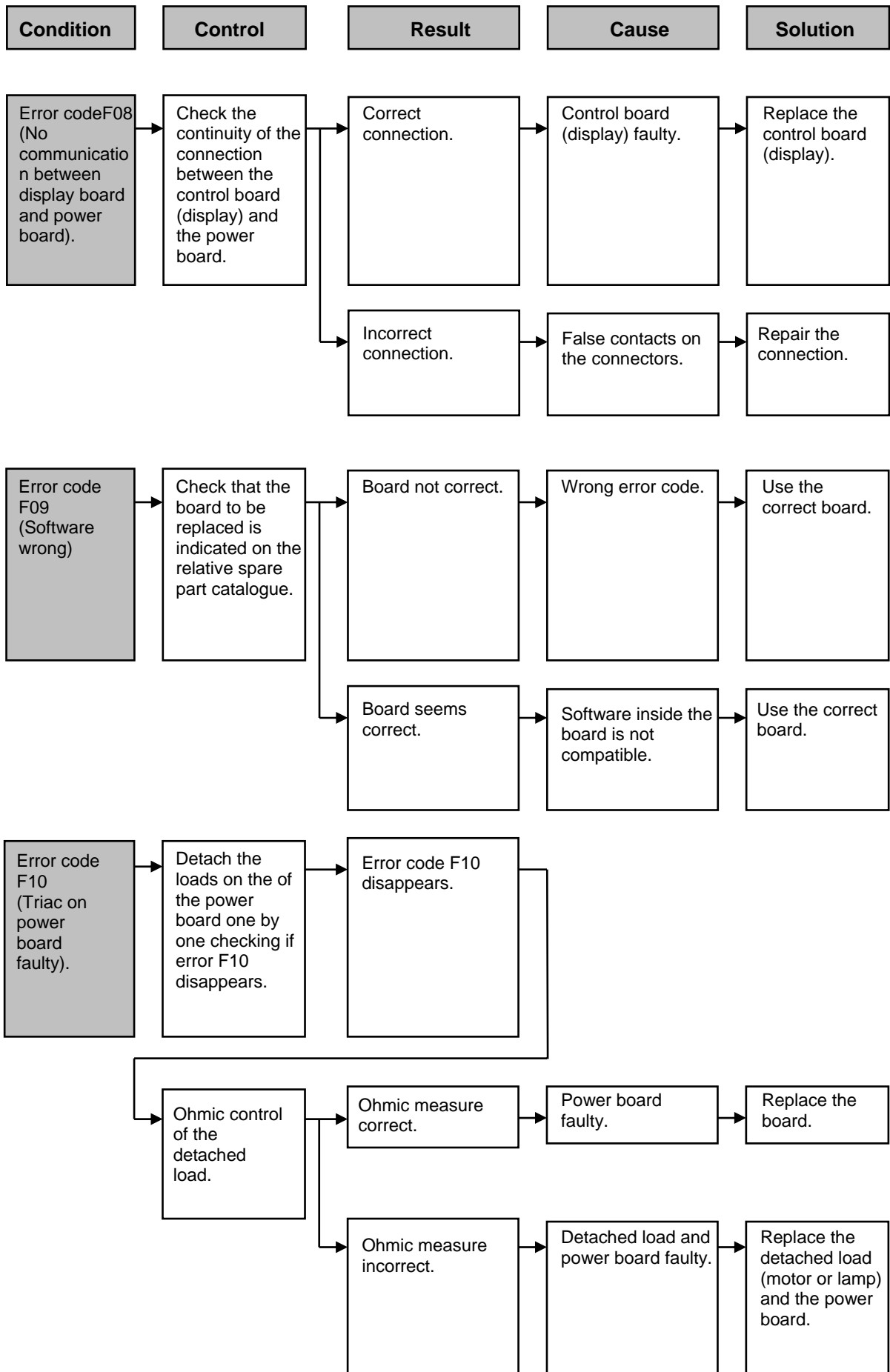
## 7 - TROUBLESHOOTING USING ERROR CODES ON PYROLYTIC OVENS

Troubleshooting based on error codes helps to identify the component or a specific section of the circuitry in the appliance.

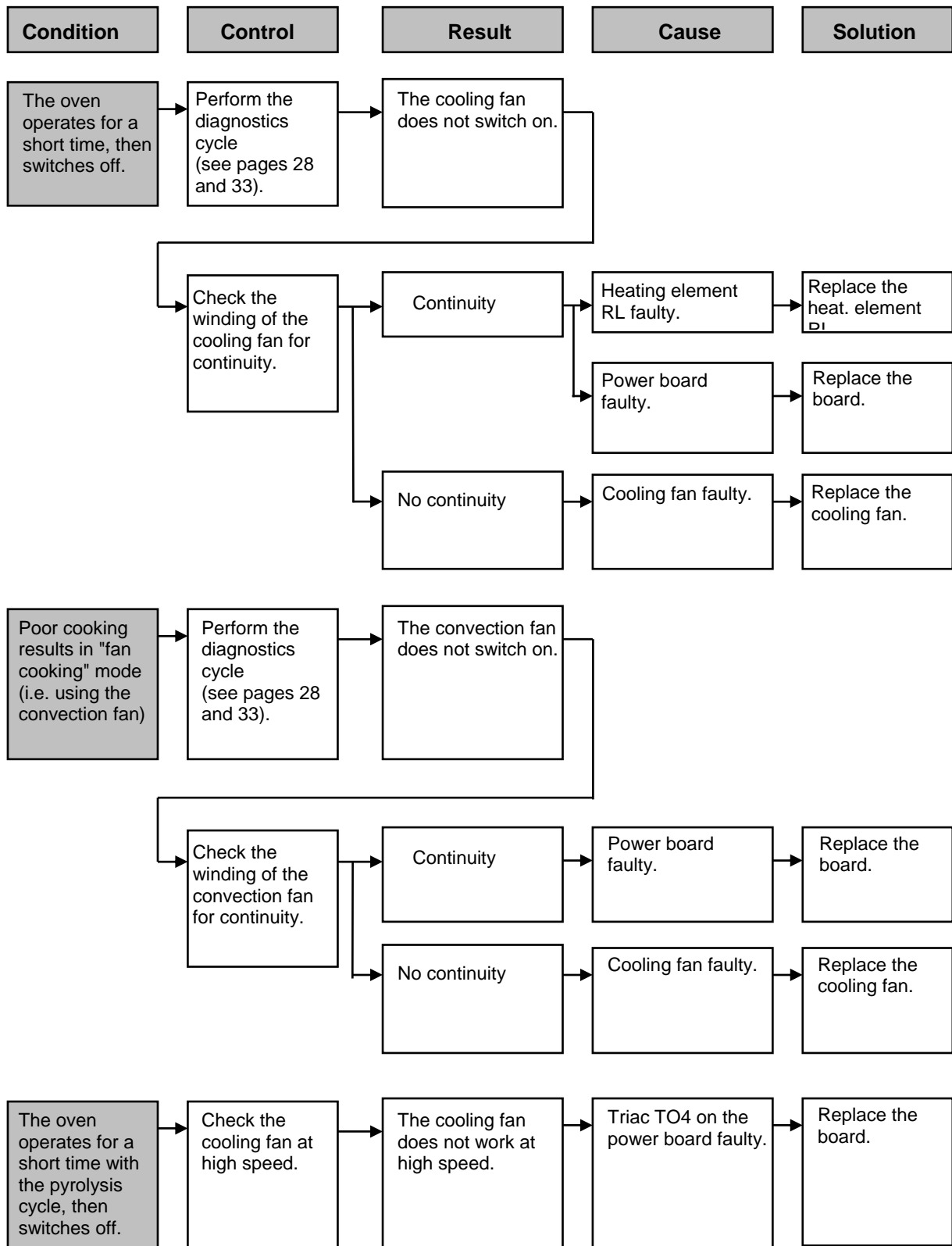
When a malfunction is detected by the control circuit, the appliance shows the error code on the display and then switches off.

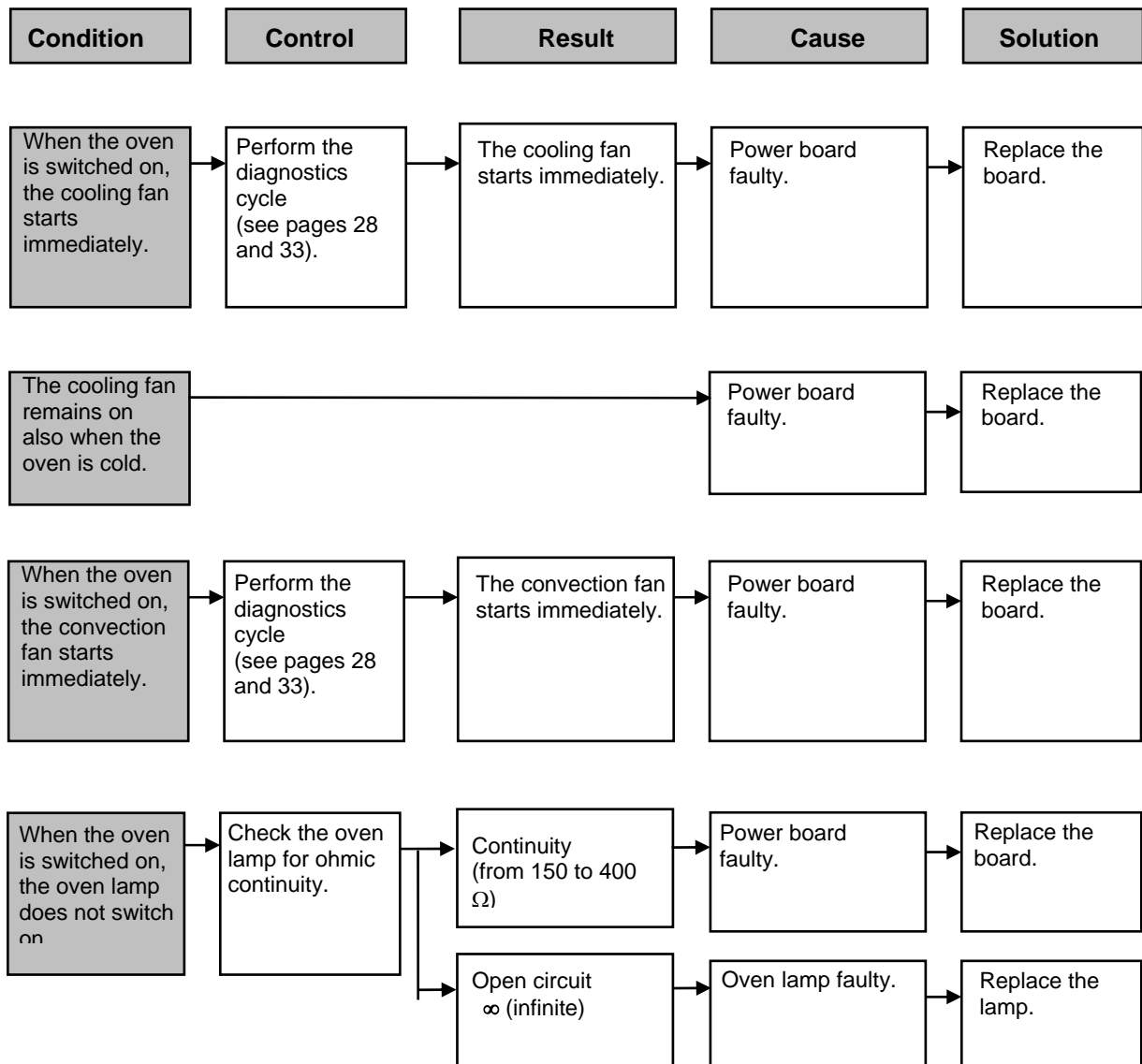


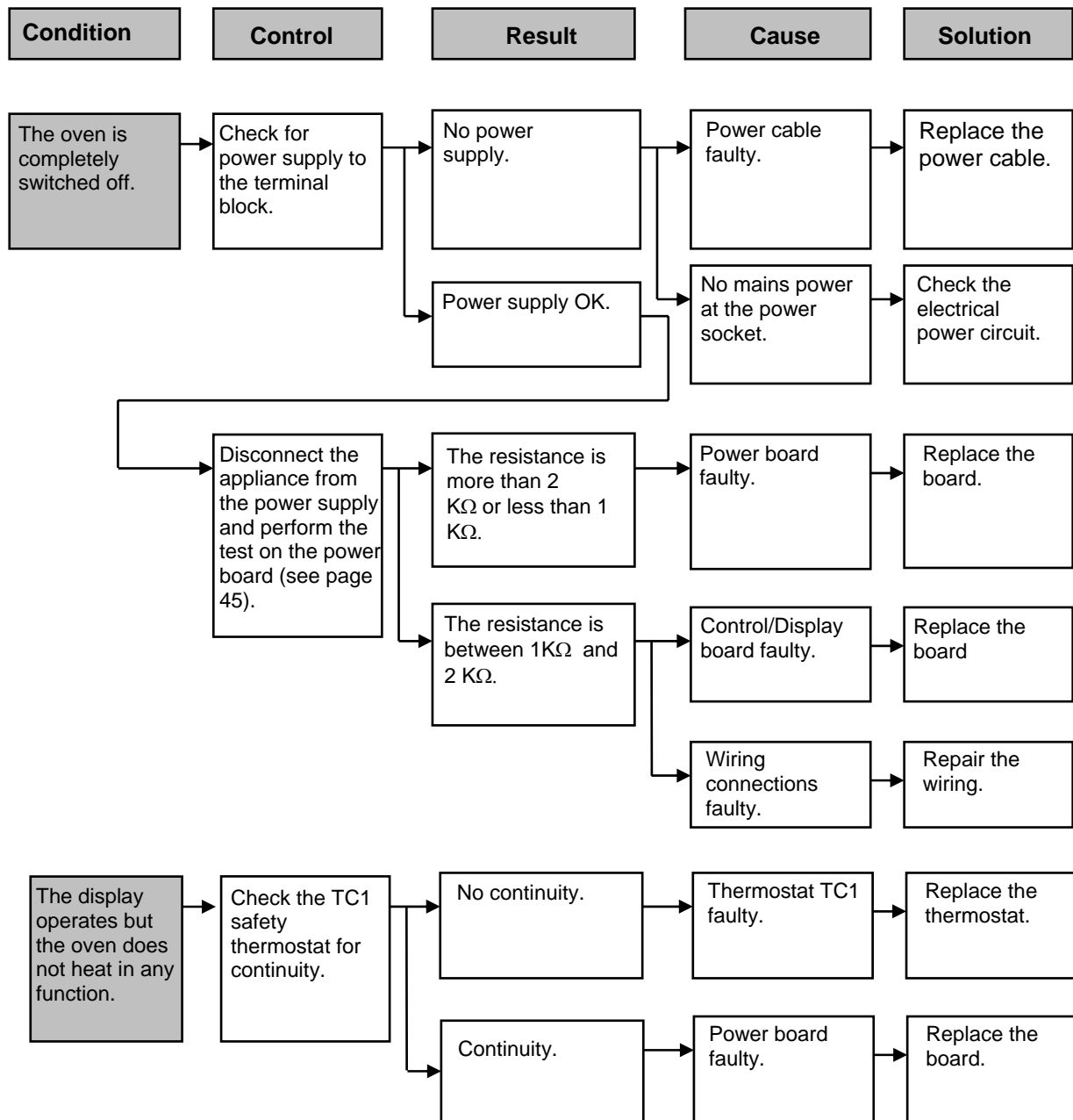


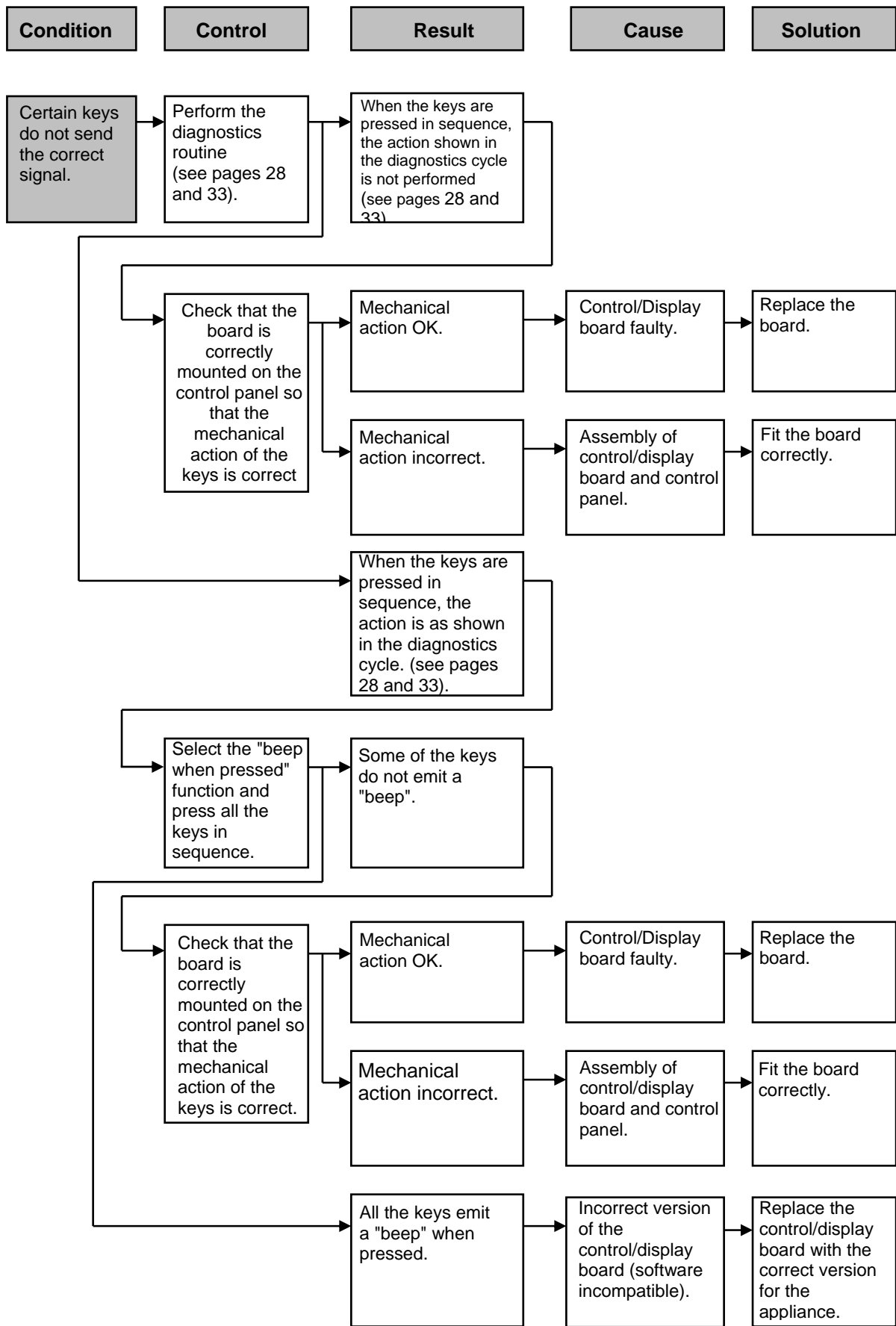


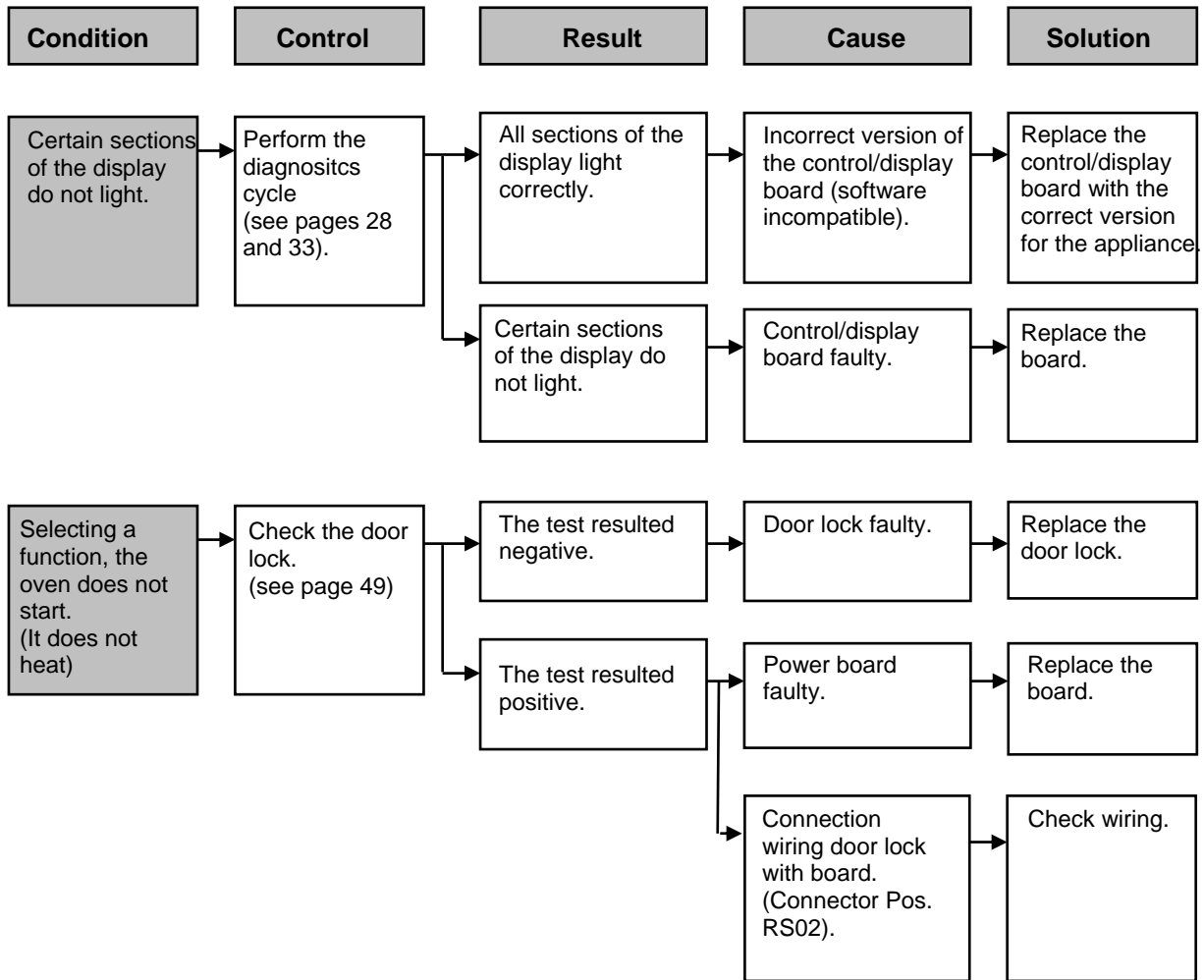
## 8 - TROUBLESHOOTING WITHOUT ERROR CODES ON PYROLYTIC OVENS







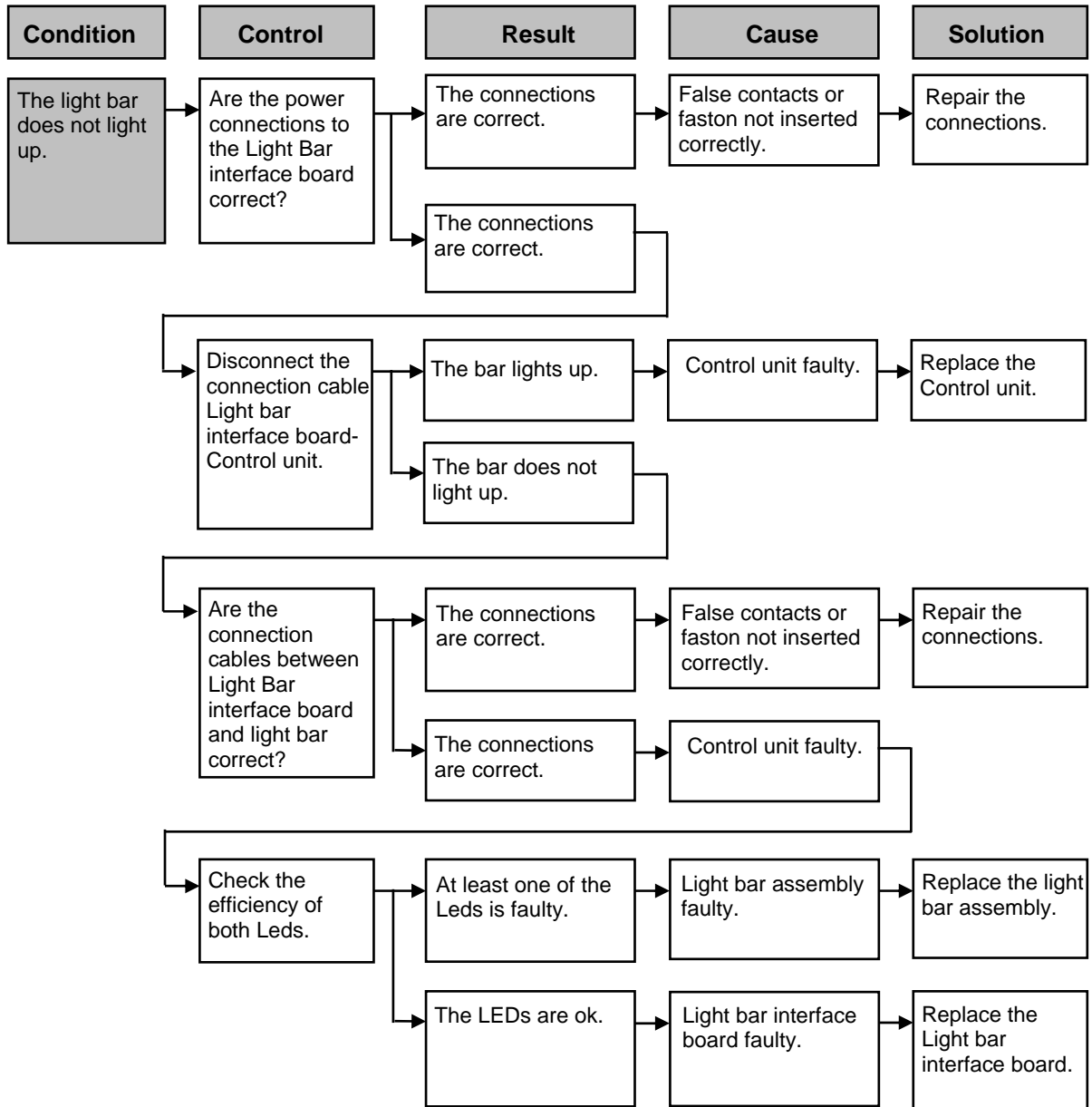






## 9 - VARIANT FOR MODELS WITH LIGHT BAR


The troubleshooting part below is dedicated to the light bar and the relative control board featured only on some models.



## 10 - DIAGNOSTICS CYCLE

### 10.1 - DIAGNOSTICS LEVEL 2 CONTROL UNIT NORMAL

To activate the diagnostics cycle in the base version it is necessary:

Press buttons FHU and  simultaneously within some seconds after the switching on:  
The test has the following sequence:

#### Switching on



Fig. 5

#### Activation of the test



Fig. 6

#### Displaying of the display segments

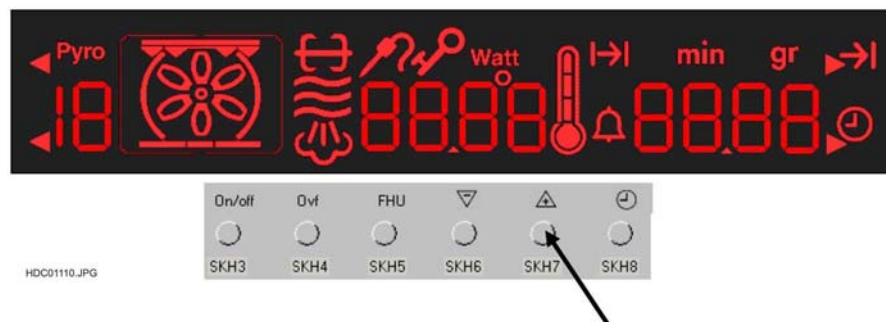


Fig. 7

### Displaying of the programme code

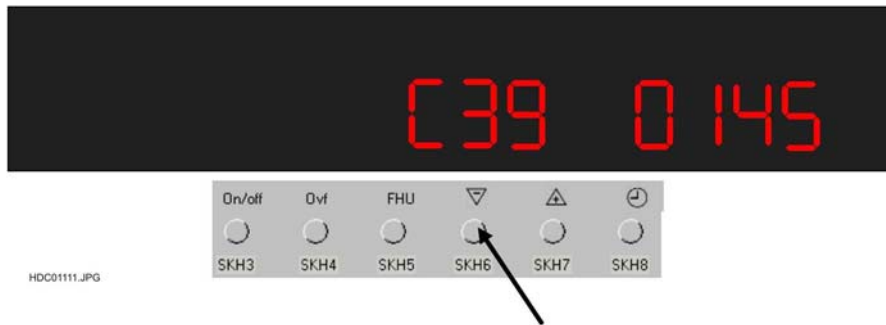


Fig. 8

### Sensor temperature (25)



Fig. 9

### Power and auxiliary loads test



Fig. 10

### End of test

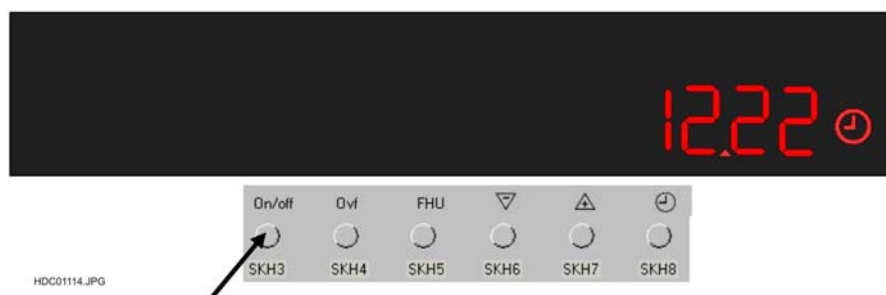



Fig. 11

## 10.2 - DIAGNOSTICS LEVEL 2 CONTROL UNIT PYRO

To activate the diagnostics cycle in the base version it is necessary:

Press buttons FHU and  simultaneously within some seconds after the switching on:  
The test has the following sequence:

### Switching on



Fig. 12

### Activation of the test



Fig. 13

### Displaying of the display segments



Fig. 14

## Displaying of the programme code



Fig. 15

## Door closed not locked (02) Sensor temperature (25)



Fig. 16

## Door open not locked (02) Sensor temperature (25)



Fig. 17

## Door locked



Fig. 18

### Power and auxiliary loads test

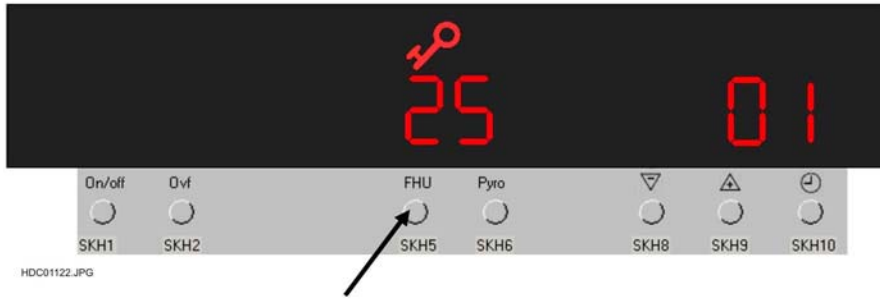


Fig. 19

### Door lock deactivated



Fig. 20

### End of test

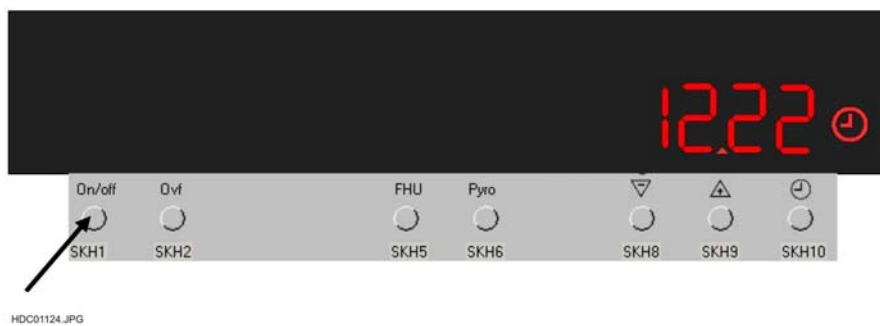



Fig. 21

### 10.3 - DIAGNOSTICS LEVEL 3 CONTROL UNIT NORMAL

To activate the diagnostics cycle in the base version it is necessary:

Press buttons FHU and  simultaneously within some seconds after the switching on:  
The test has the following sequence:

#### Switching on



Fig. 22

#### Activation of the test

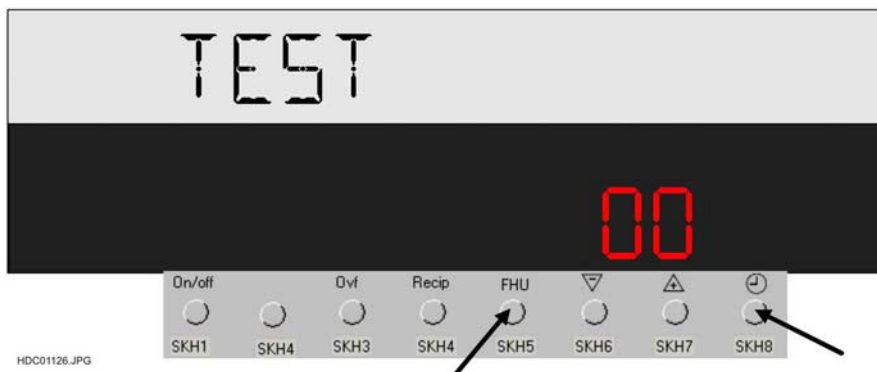


Fig. 23

#### Displaying of the display segments

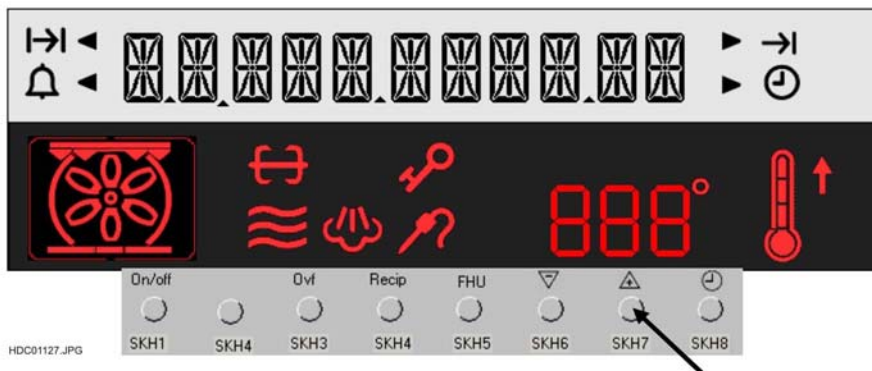


Fig. 24

### Displaying of programme code and Sensor temperature (25)

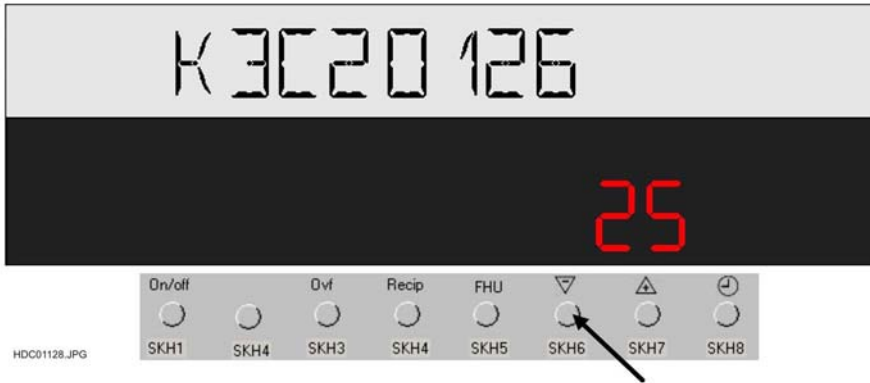


Fig. 25

### Power and auxiliary loads test

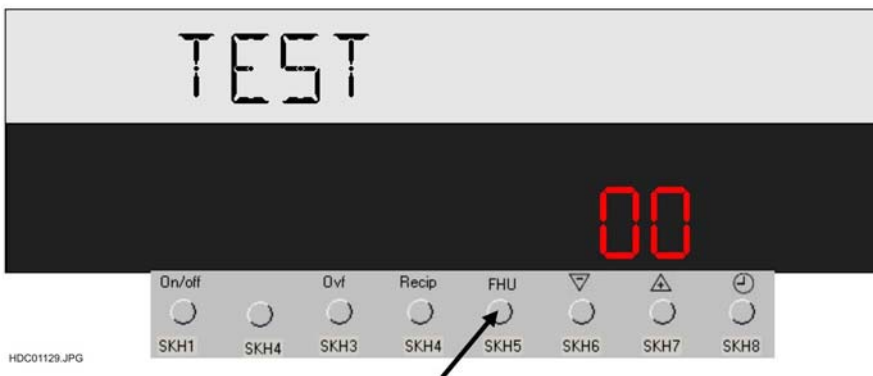


Fig. 26

### End of test

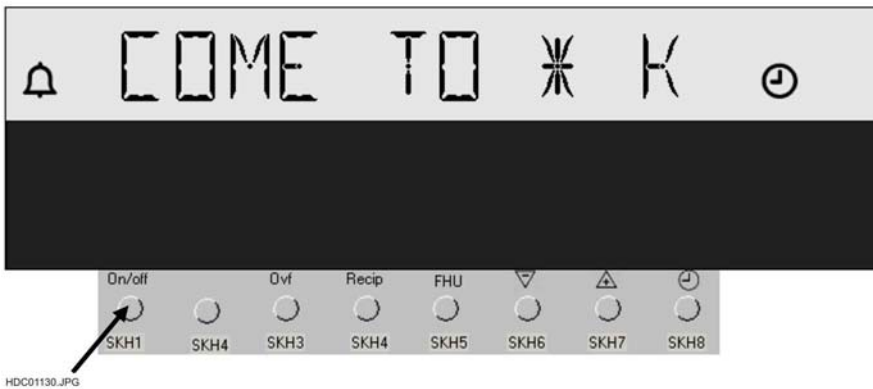



Fig. 27



## 10.4 - DIAGNOSTICS LEVEL 3 CONTROL UNIT PYRO

To activate the diagnostics cycle in the base version it is necessary:

Press buttons FHU and  simultaneously within some seconds after the switching on:  
The test has the following sequence:

### Switching on

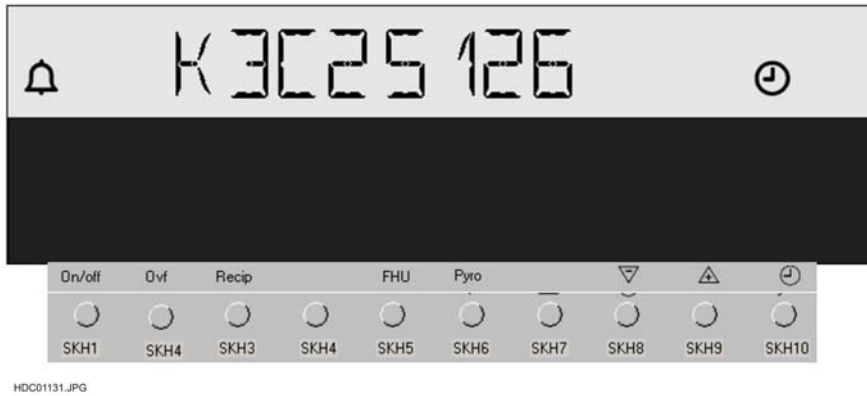


Fig. 28

### Activation of the test

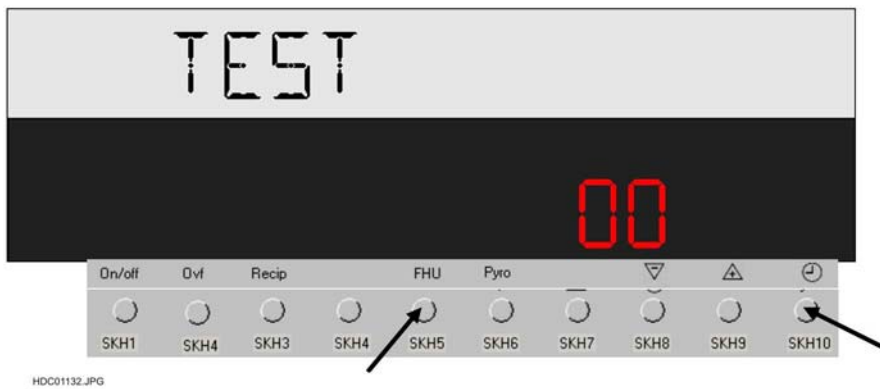


Fig. 29

### Displaying of the display segments

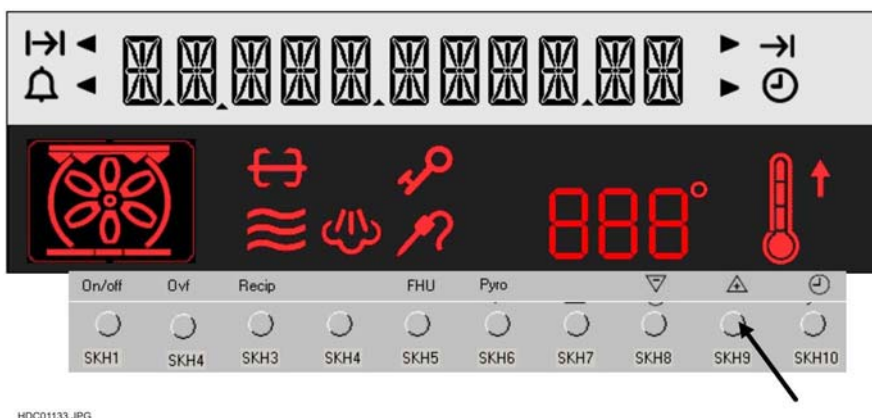


Fig. 30

### Displaying of programme code and Sensor temperature (25)



HDC01134.JPG

Fig. 31

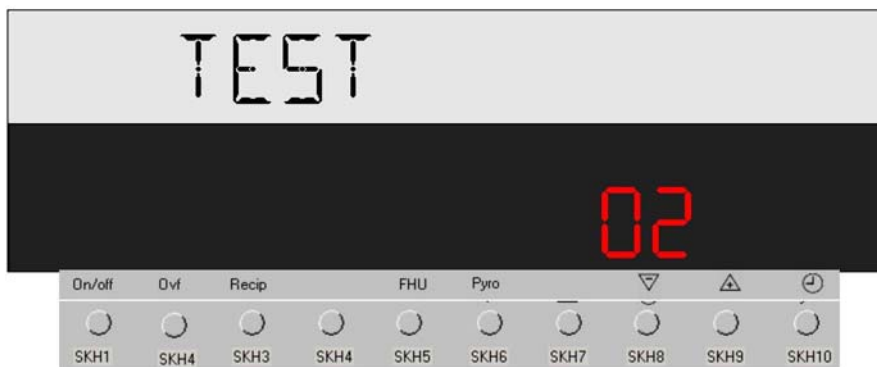
### Door closed not locked (00)



HDC01135.JPG

Fig. 32

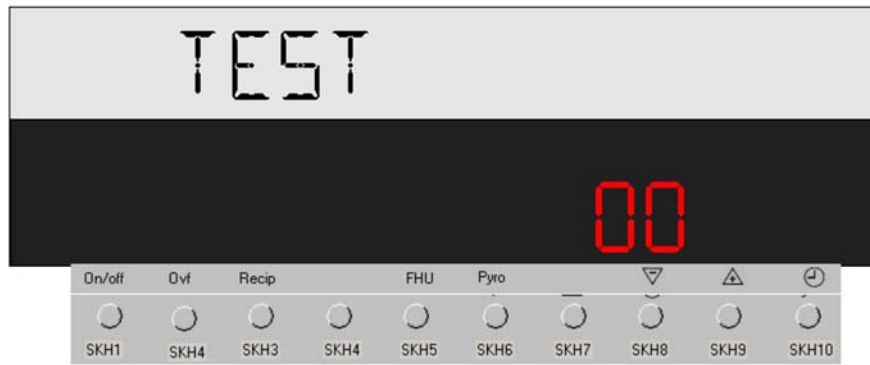
### Door open not locked (02)



HDC01136.JPG

Fig. 33

End of test



HDC01137.JPG

Fig. 34

# 11 - FUNCTIONAL DIAGRAMS

## 11.1 - FUNCTIONAL DIAGRAMS NORMAL OVEN

### 11.1.1 - FUNCTIONAL DIAGRAM LEVEL 2 NORMAL OVEN

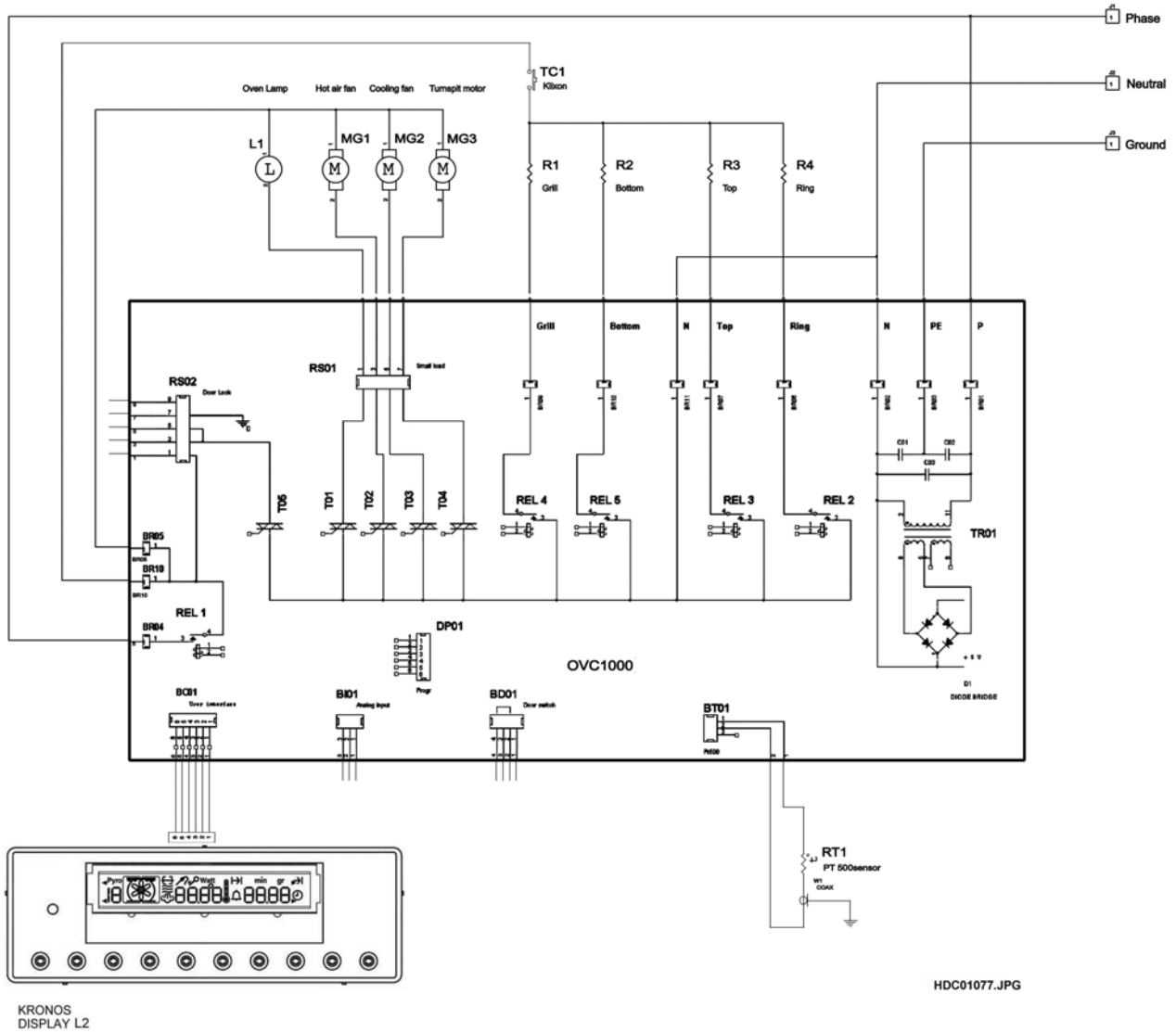


Fig. 35

#### KEY

- |            |  |      |   |
|------------|--|------|---|
| DISPLAY L2 | - KRONOS CONTROL UNIT LEVEL 2.           | REL2 | - CONTROL RELAY FOR CONVECTION HEATING ELEMENT. |
| Ground     | - MAINS (EARTH).                         | REL3 | - CONTROL RELAY FOR UPPER HEATING ELEMENT.      |
| L1         | - OVEN LAMP.                             | REL4 | - CONTROL RELAY FOR GRILL HEATING ELEMENT.      |
| MG1        | - CONVECTION FAN                         | REL5 | - CONTROL RELAY FOR LOWER HEATING ELEMENT.      |
| MG2        | - TANGENTIAL COOLING FAN.                | TC1  | - SAFETY THERMOSTAT.                            |
| MG3        | - SPIT MOTOR                             | TO1  | - CONTROL TRIAC FOR OVEN LAMP.                  |
| Neutral    | - MAINS (NEUTRAL).                       | TO2  | - CONTROL TRIAC FOR CONVECTION FAN.             |
| Phase      | - RETE (FASE).                           | TO3  | - CONTROL TRIAC FOR TANGENTIAL COOLING FAN.     |
| RT1        | - OVEN SENSOR PT500.                     | TO4  | - CONTROL TRIAC FOR SPIT MOTOR                  |
| R1         | - GRILL HEATING ELEMENT.                 | TO5  | - CONTROL TRIAC FOR DOOR INTERLOCK              |
| R2         | - LOWER HEATING ELEMENT (BOTTOM).        | TR01 | - LOW-POWER TRANSFORMER                         |
| R3         | - UPPER HEATING ELEMENT (CEILING).       |      |   |
| R4         | - CONVECTION HEATING ELEMENT (CIRCULAR). |      |   |
| OVC1000    | - POWER BOARD.                           |      |   |
| REL1       | - SAFETY MAIN RELAY.                     |      |   |

### 11.1.2 - FUNCTIONAL DIAGRAM LEVEL 2 NORMAL OVEN WITH LIGHT BAR

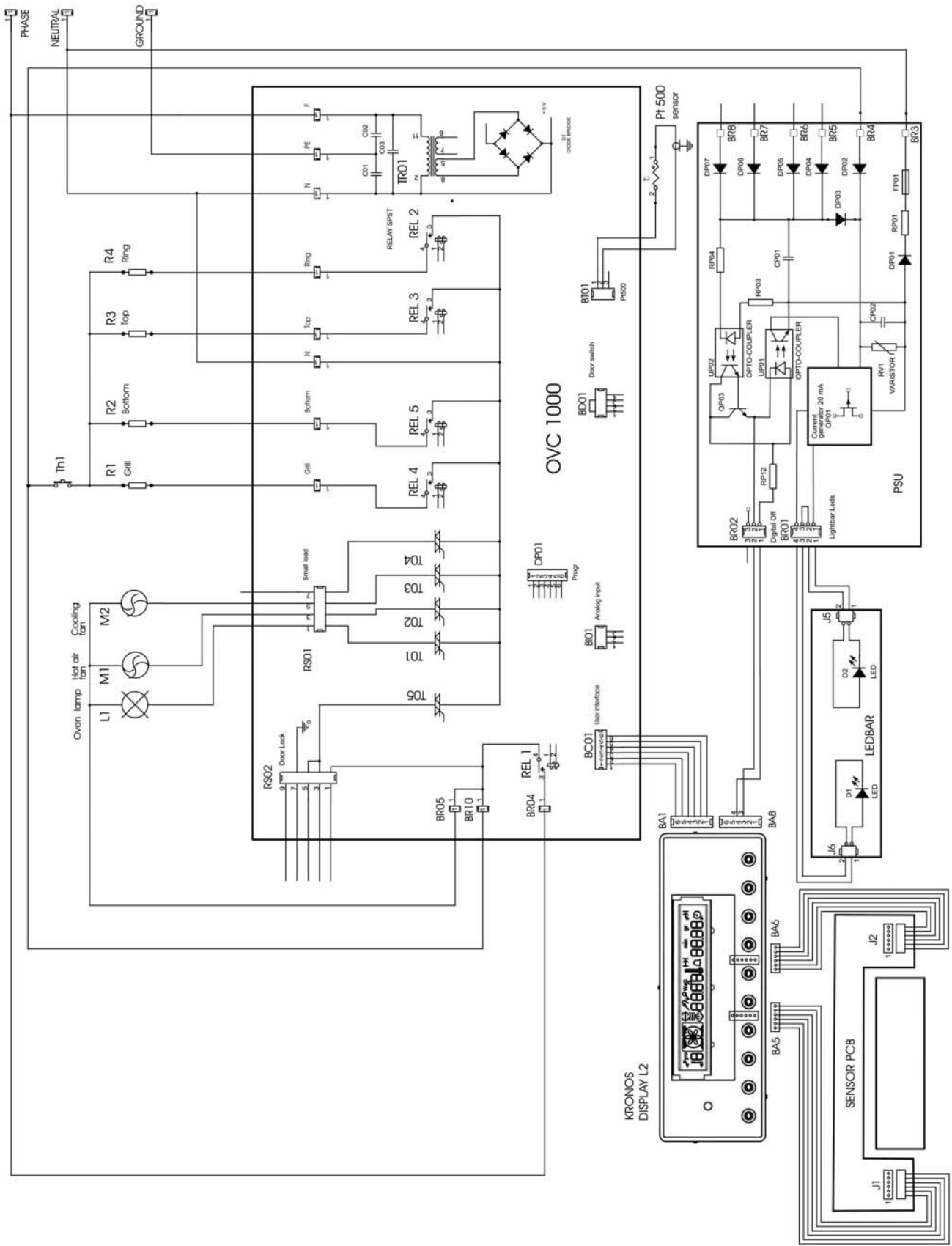


Fig. 36

## KEY

DISPLAY L2	- KRONOS CONTROL UNIT LEVEL 2.	REL2	- CONTROL RELAY FOR CONVECTION HEATING ELEMENT.
Ground	- MAINS (EARTH).	REL3	- CONTROL RELAY FOR UPPER HEATING ELEMENT.
L1	- OVEN LAMP.	REL4	- CONTROL RELAY FOR GRILL HEATING ELEMENT.
LEDBAR	- LIGHT-BAR ASSEMBLY.	REL5	- CONTROL RELAY FOR LOWER HEATING ELEMENT.
M1	- CONVECTION FAN	SENSOR PCB	- SENSOR INTERFACE BOARD.
M2	- TANGENTIAL COOLING FAN.	Th1	- SAFETY THERMOSTAT.
NEUTRAL	- MAINS (NEUTRAL).	TO1	- CONTROL TRIAC FOR OVEN LAMP.
OVC1000	- POWER BOARD.	TO2	- CONTROL TRIAC FOR CONVECTION FAN.
PHASE	- MAINS (PHASE).	TO3	- CONTROL TRIAC FOR TANGENTIAL COOLING FAN.
Pt500	- OVEN SENSOR PT500.	TO4	- CONTROL TRIAC FOR SPIT MOTOR (NOT USED)
PSU	- LIGHT-BAR INTERFACE BOARD	TO5	- CONTROL TRIAC FOR DOOR INTERLOCK (NOT USED)
R1	- GRILL HEATING ELEMENT.	TR01	- LOW-POWER TRANSFORMER
R2	- LOWER HEATING ELEMENT (BOTTOM).		
R3	- UPPER HEATING ELEMENT (CEILING).		
R4	- CONVECTION HEATING ELEMENT (CIRCULAR).		
REL1	- SAFETY MAIN RELAY.		

### 11.1.3 - FUNCTIONAL DIAGRAM LEVEL 3 NORMAL OVEN

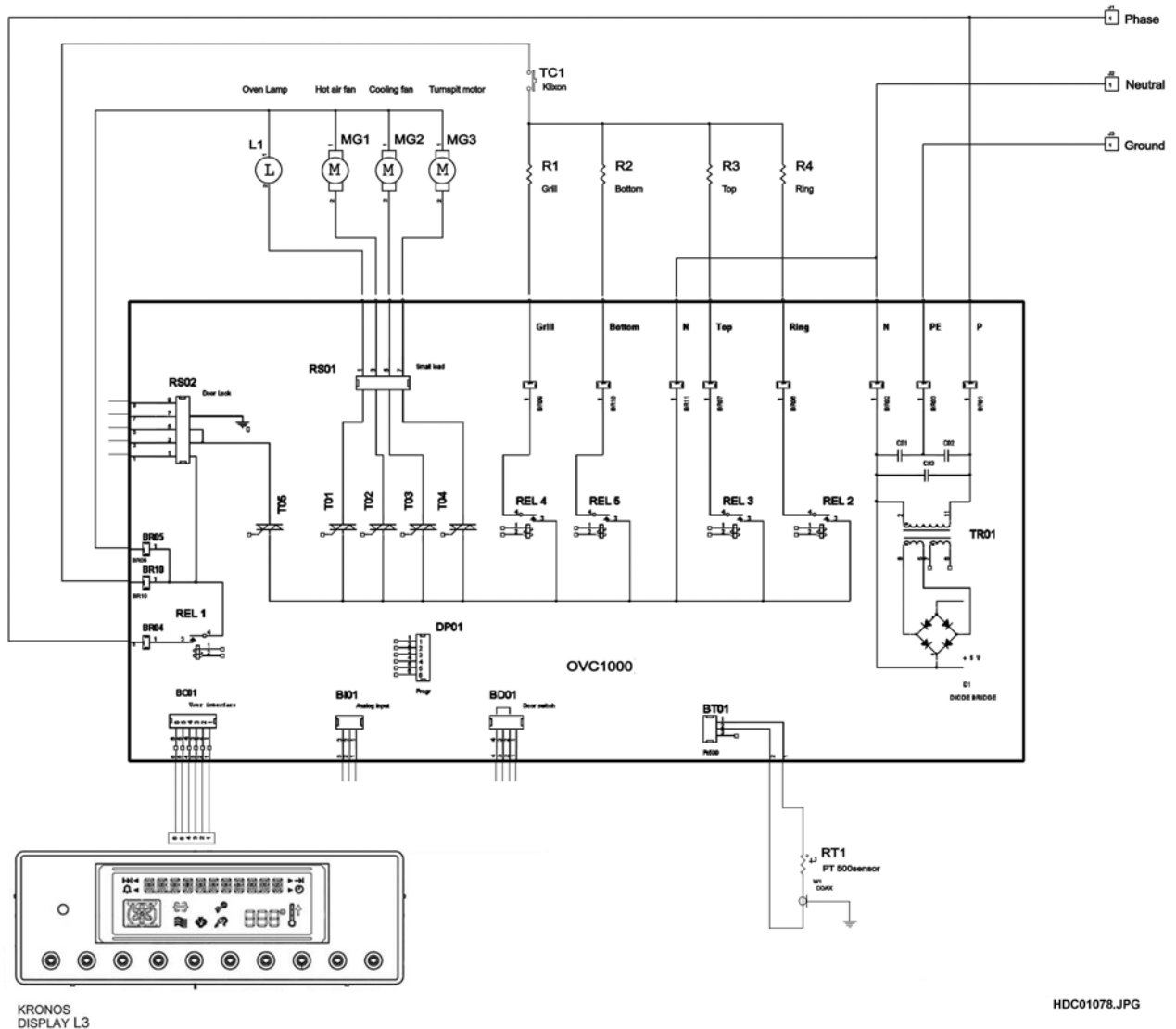


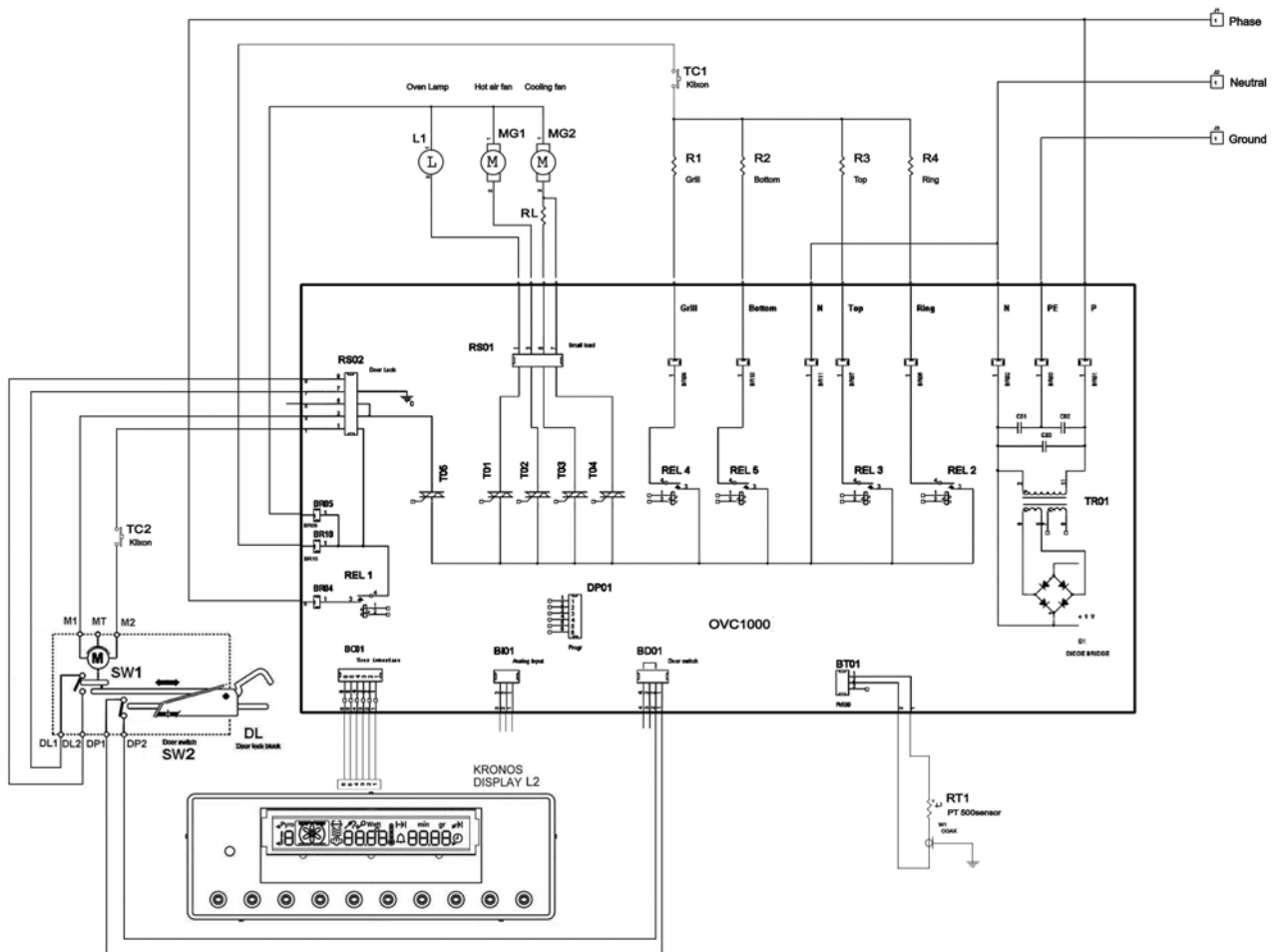
Fig. 37

#### KEY

- |            |  |      |   |
|------------|--|------|---|
| DISPLAY L3 | - KRONOS CONTROL UNIT LEVEL 3.           | REL2 | - CONTROL RELAY FOR CONVECTION HEATING ELEMENT. |
| Ground     | - MAINS (EARTH).                         | REL3 | - CONTROL RELAY FOR UPPER HEATING ELEMENT.      |
| L1         | - OVEN LAMP.                             | REL4 | - CONTROL RELAY FOR GRILL HEATING ELEMENT.      |
| MG1        | - CONVECTION FAN                         | REL5 | - CONTROL RELAY FOR LOWER HEATING ELEMENT.      |
| MG2        | - TANGENTIAL COOLING FAN.                | TC1  | - SAFETY THERMOSTAT.                            |
| MG3        | - SPIT MOTOR                             | TO1  | - CONTROL TRIAC FOR OVEN LAMP.                  |
| Neutral    | - MAINS (NEUTRAL).                       | TO2  | - CONTROL TRIAC FOR CONVECTION FAN.             |
| Phase      | - RETE (FASE).                           | TO3  | - CONTROL TRIAC FOR TANGENTIAL COOLING FAN.     |
| RT1        | - OVEN SENSOR PT500.                     | TO4  | - CONTROL TRIAC FOR SPIT MOTOR                  |
| R1         | - GRILL HEATING ELEMENT.                 | TO5  | - CONTROL TRIAC FOR DOOR INTERLOCK              |
| R2         | - LOWER HEATING ELEMENT (BOTTOM).        | TR01 | - LOW-POWER TRANSFORMER                         |
| R3         | - UPPER HEATING ELEMENT (CEILING).       |      |   |
| R4         | - CONVECTION HEATING ELEMENT (CIRCULAR). |      |   |
| OVC1000    | - POWER BOARD.                           |      |   |
| REL1       | - SAFETY MAIN RELAY.                     |      |   |

## 11.2 - FUNCTIONAL DIAGRAM PYROLYTIC OVEN

### 11.2.1 - FUNCTIONAL DIAGRAM LEVEL 2 PYROLYTIC OVEN



HDC01081.JPG

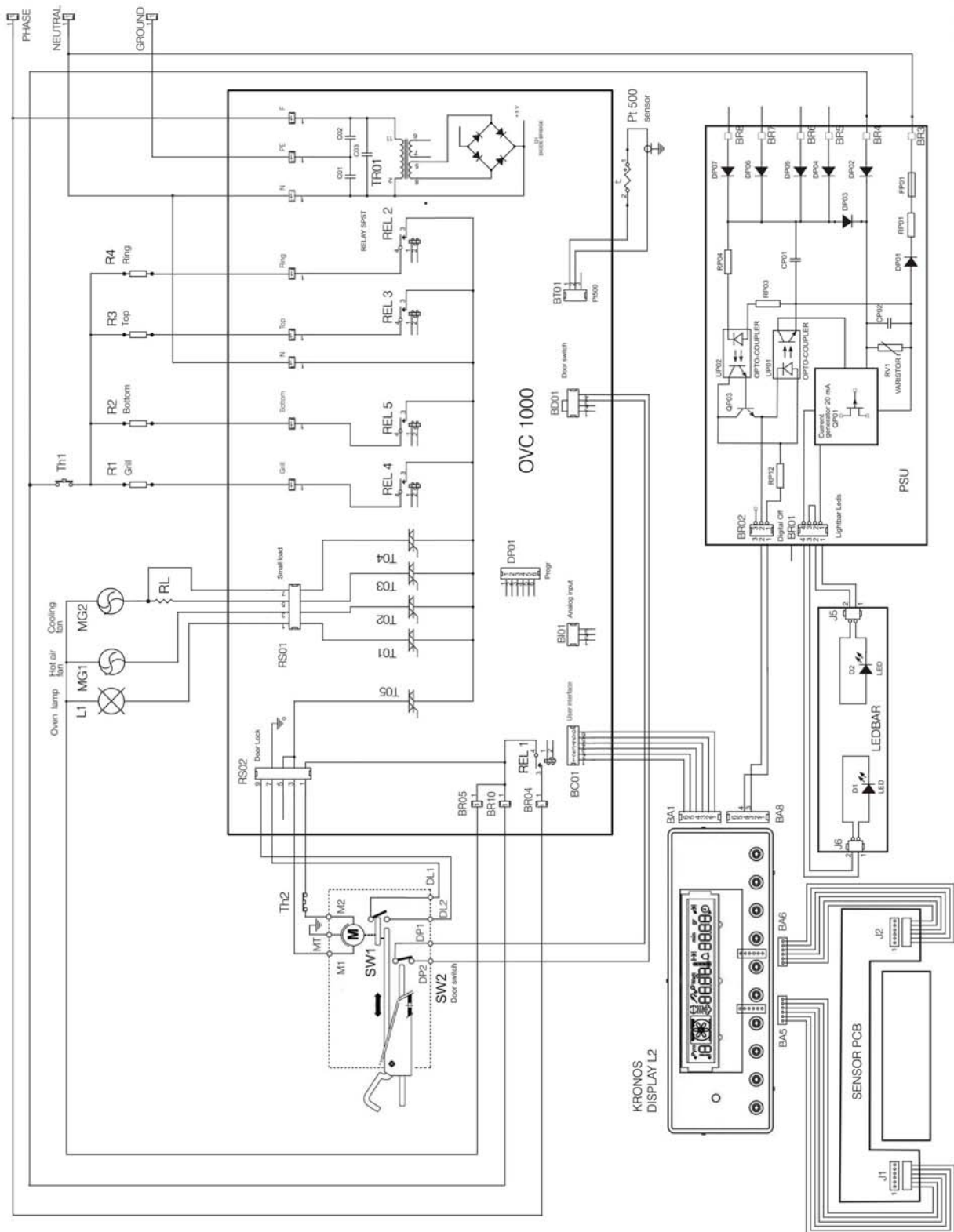
Fig. 38

#### KEY

DISPLAY L2	- KRONOS CONTROL UNIT LEVEL 2.	REL2	- CONTROL RELAY FOR CONVECTION HEATING ELEMENT.
DL	- DOOR INTERLOCK ASSY	REL4	- CONTROL RELAY FOR GRILL HEATING ELEMENT.
Ground	- MAINS (EARTH).	RL	- FAN HEATING ELEMENT (DOUBLE SPEED)
L1	- OVEN LAMP.	SW1	- MICROSWITCH DOOR INTERLOCK.
MG1	- CONVECTION FAN	SW2	- MICROSWITCH DOOR CLOSED.
MG2	- TANGENTIAL COOLING FAN.	TC1	- SAFETY THERMOSTAT.
MG3	- SPIT MOTOR	TC2	- DOOR INTERLOCK THERMOSTAT
Neutral	- MAINS (NEUTRAL).	TO1	- CONTROL TRIAC FOR OVEN LAMP.
Phase	- RETE (FASE).	TO2	- CONTROL TRIAC FOR CONVECTION FAN.
RT1	- OVEN SENSOR PT500.	TO3	- CONTROL TRIAC FOR TANGENTIAL COOLING FAN.
R1	- GRILL HEATING ELEMENT.	TO4	- CONTROL TRIAC FOR COOLING TANGENTIAL FAN DOUBLE SPEED
R2	- LOWER HEATING ELEMENT (BOTTOM).	TO5	- CONTROL TRIAC FOR DOOR INTERLOCK
R3	- UPPER HEATING ELEMENT (CEILING).	TR01	- LOW-POWER TRANSFORMER
R4	- CONVECTION HEATING ELEMENT (CIRCULAR).		
OVC1000	- POWER BOARD.		
REL1	- SAFETY MAIN RELAY.		
REL3	- CONTROL RELAY FOR UPPER HEATING ELEMENT.		
REL5	- CONTROL RELAY FOR LOWER HEATING ELEMENT.		



## 11.2.2 - FUNCTIONAL DIAGRAM LEVEL 2 PYROLYTIC OVEN WITH LIGHT BAR



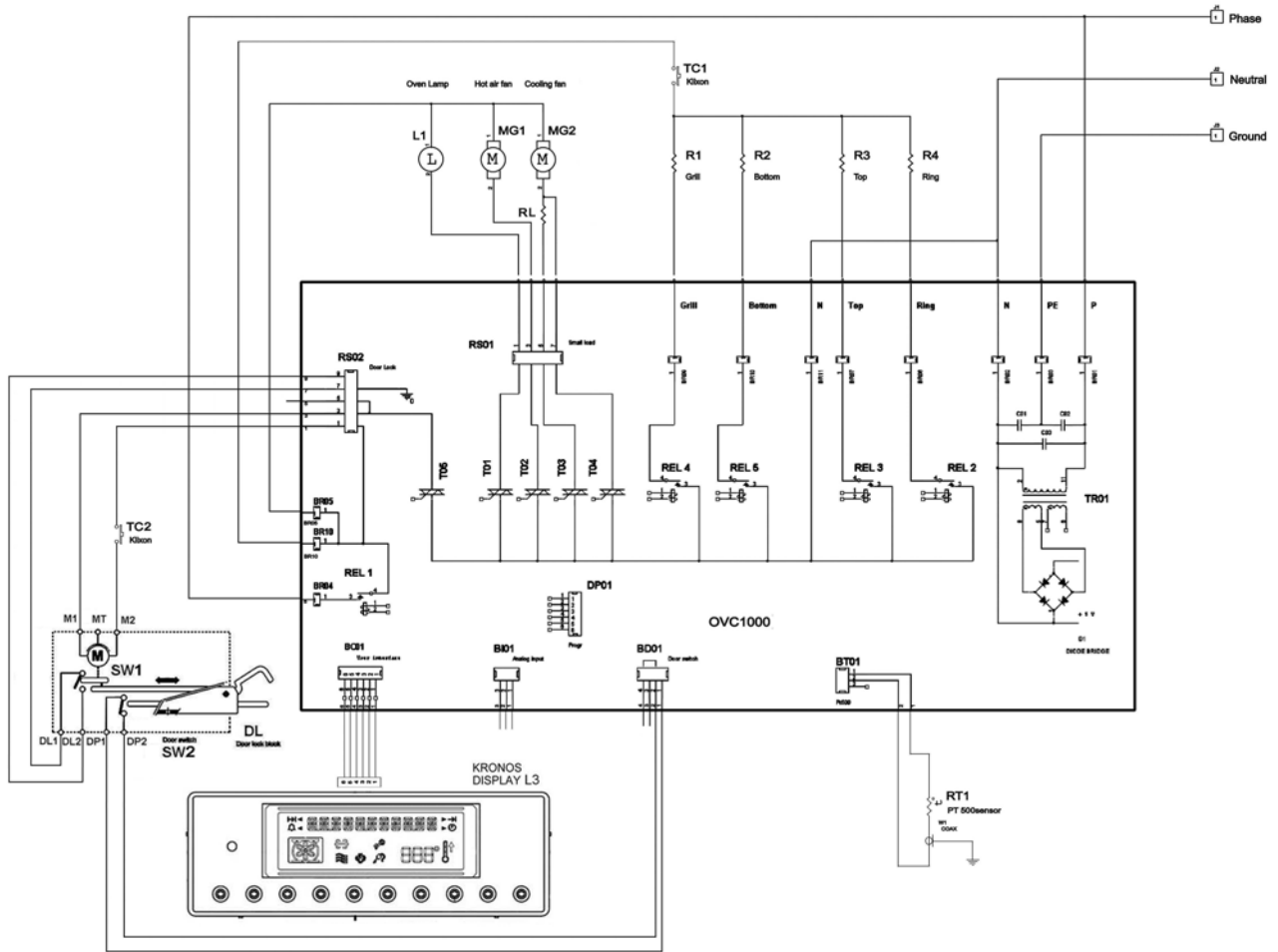
H000082.JPG

Fig. 39

## KEY

DISPLAY L2	- KRONOS CONTROL UNIT LEVEL 2.	REL3	- CONTROL RELAY FOR UPPER HEATING ELEMENT.
Ground	- MAINS (EARTH).	REL4	- CONTROL RELAY FOR GRILL HEATING ELEMENT.
L1	- OVEN LAMP.	REL5	- CONTROL RELAY FOR LOWER HEATING ELEMENT.
LEDBAR	- LIGHT-BAR ASSEMBLY.	SENSOR PCB	- SENSOR INTERFACE BOARD.
MG1	- CONVECTION FAN	SW1	- MICROSWITCH DOOR INTERLOCK HOOK.
MG2	- TANGENTIAL COOLING FAN.	SW2	- MICROSWITCH DOOR INTERLOCK.
NEUTRAL	- MAINS (NEUTRAL).	Th1	- SAFETY THERMOSTAT.
OVC1000	- POWER BOARD.	Th2	- DOOR LOCK THERMOSTAT
PHASE	- MAINS (PHASE).	TO1	- CONTROL TRIAC FOR OVEN LAMP.
Pt500	- OVEN SENSOR PT500.	TO2	- CONTROL TRIAC FOR CONVECTION FAN.
PSU	- LIGHT-BAR INTERFACE BOARD	TO3	- CONTROL TRIAC FOR TANGENTIAL COOLING FAN.
R1	- GRILL HEATING ELEMENT.	TO4	- CONTROL TRIAC FOR COOLING TANGENTIAL FAN DOUBLE SPEED
R2	- LOWER HEATING ELEMENT (BOTTOM).	TO5	- CONTROL TRIAC FOR DOOR INTERLOCK
R3	- UPPER HEATING ELEMENT (CEILING).	TR01	- LOW-POWER TRANSFORMER
R4	- CONVECTION HEATING ELEMENT (CIRCULAR).		
RL	- DROP RESISTANCE FOR FAN (DOUBLE SPEED).		
REL1	- SAFETY MAIN RELAY.		
REL2	- CONTROL RELAY FOR CONVECTION HEATING ELEMENT.		

### 112.3 - FUNCTIONAL DIAGRAM LEVEL 3 PYROLYTIC OVEN



HDC01085.JPG

Fig. 38

#### KEY

- |            |  |      |   |
|------------|--|------|---|
| DISPLAY L3 | - KRONOS CONTROL UNIT LEVEL 3.             | REL2 | - CONTROL RELAY FOR CONVECTION HEATING ELEMENT. |
| DL         | - DOOR INTERLOCK ASSY                      | REL4 | - CONTROL RELAY FOR GRILL HEATING ELEMENT.      |
| Ground     | - MAINS (EARTH).                           | RL   | - FAN HEATING ELEMENT (DOUBLE SPEED)            |
| L1         | - OVEN LAMP.                               | SW1  | - MICROSWITCH DOOR INTERLOCK.                   |
| MG1        | - CONVECTION FAN                           | SW2  | - MICROSWITCH DOOR CLOSED.                      |
| MG2        | - TANGENTIAL COOLING FAN.                  | TC1  | - SAFETY THERMOSTAT.                            |
| MG3        | - SPIT MOTOR                               | TC2  | - DOOR INTERLOCK THERMOSTAT                     |
| Neutral    | - MAINS (NEUTRAL).                         | TO1  | - CONTROL TRIAC FOR OVEN LAMP.                  |
| Phase      | - RETE (FASE).                             | TO2  | - CONTROL TRIAC FOR CONVECTION FAN.             |
| RT1        | - OVEN SENSOR PT500.                       | TO3  | - CONTROL TRIAC FOR TANGENTIAL COOLING FAN.     |
| R1         | - GRILL HEATING ELEMENT.                   | TO4  | - CONTROL TRIAC FOR SPIT MOTOR                  |
| R2         | - LOWER HEATING ELEMENT (BOTTOM).          | TO5  | - CONTROL TRIAC FOR DOOR INTERLOCK              |
| R3         | - UPPER HEATING ELEMENT (CEILING).         | TR01 | - LOW-POWER TRANSFORMER                         |
| R4         | - CONVECTION HEATING ELEMENT (CIRCULAR).   |      |   |
| OVC1000    | - POWER BOARD.                             |      |   |
| REL1       | - SAFETY MAIN RELAY.                       |      |   |
| REL3       | - CONTROL RELAY FOR UPPER HEATING ELEMENT. |      |   |
| REL5       | - CONTROL RELAY FOR LOWER HEATING ELEMENT. |      |   |

## 12 - TESTING THE COMPONENTS

### 12.1 - TESTING THE OVEN TEMPERATURE SENSOR

In case of doubt regarding the correct operation of the oven temperature sensor, use an ohmmeter to measure its resistance as follows.

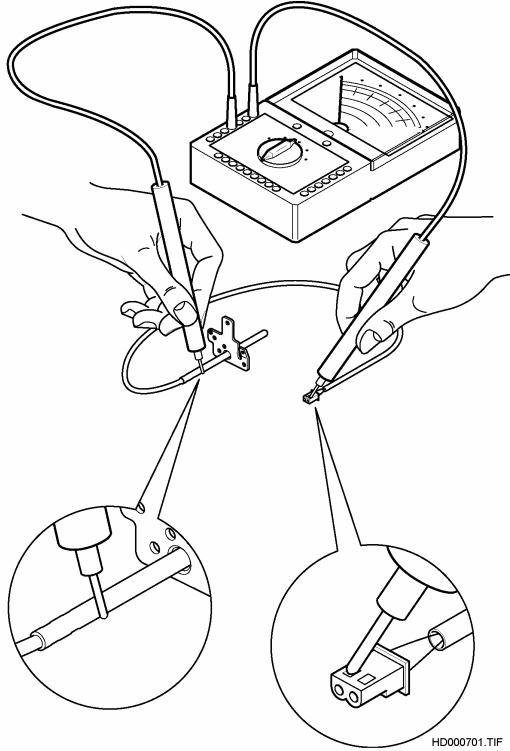


Fig. 39

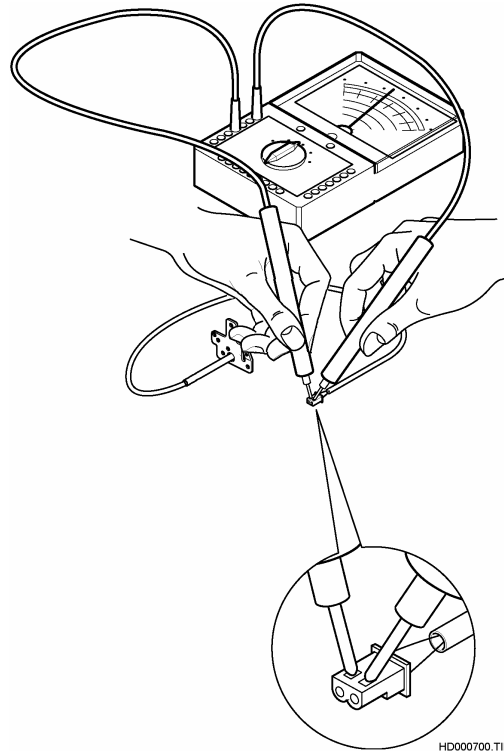


Fig. 40

The resistance should be approximately 500 - 600 ohm at room temperature. It is important to measure the insulation resistance between the metal casing and each of the terminals, which must be greater than 2 Mohm.

## 12.2 - POWER ABSORPTION TESTS

The power absorption can be measured using the appropriate instrument (e.g. wattmeter), which should be applied between the power supply and the appliance.

The table below also shows indicative values for the relative current absorption in the event that an amperometric pincer is used for measurement.

POWER ABSORPTION (W)	CURRENT ABSORPTION (A)
50	0,20
1700	7,40
2000	8,70

**NOTA:** The values measured refer to a power supply voltage of 230 V.

## 12.3 - TESTING THE POWER BOARD

The continuity of the primary winding of the power transformer on the power board can be checked by measuring the ohmic resistance on the power supply terminal block. The test points for the various types of appliance are shown in fig. 41.

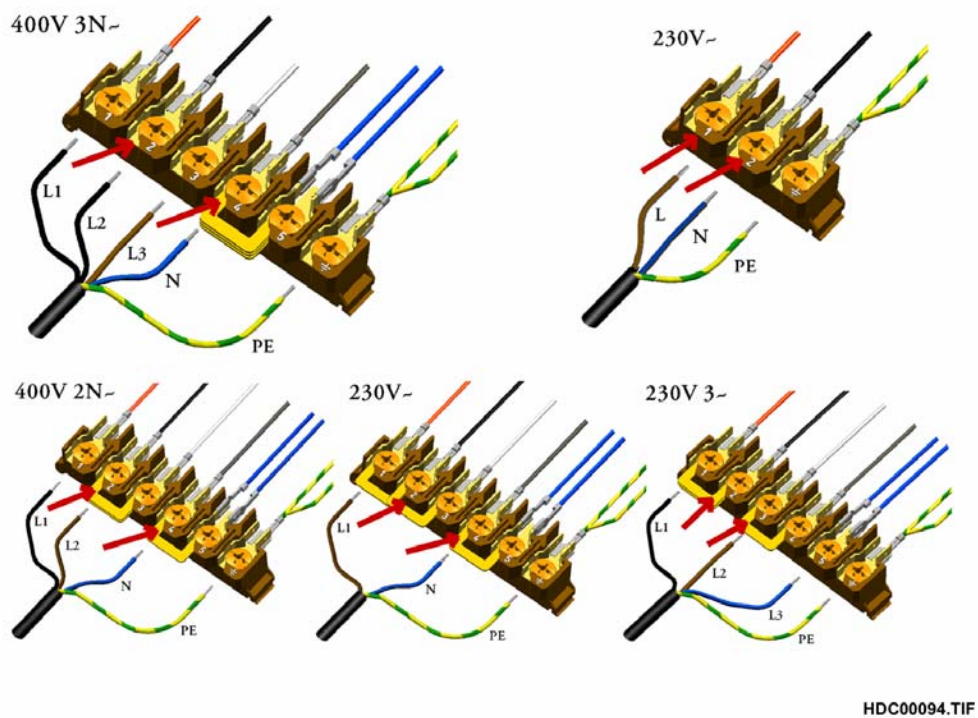


Fig. 41

## 12.4 - RELEASING THE DOOR LOCK MANUALLY

If the door remains locked mechanically, it must be released manually. To do so, proceed as follows:

### 12.4.1 - RELEASING THE DOOR LOCK MANUALLY ON ACCESS OVENS

To release the door lock manually on Access ovens, it is necessary to remove the hook screw through a hole on the venting grid:

1. Insert a 3mm Philips (cross-head) screwdriver through the hole and loosen the screw which secures the latch of the lock.
2. Remove the screw which secures the latch; in the way, the latch can be raised to release the door (see fig. 44).
3. Check that the door interlock functions correctly. If not, replace the interlock (see chapter 11.5).

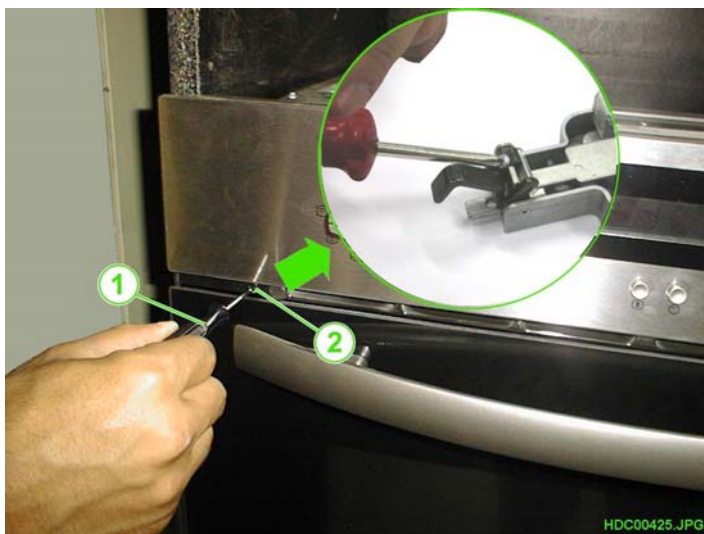


Fig. 44

- 1 - 3mm PHILIPS (CROSS-HEAD) SCREWDRIVER
- 2 - HOLE FOR ACCESS TO RELEASE SCREW

When the door interlock is released for the first time, it is necessary to perforate the thin plastic film which covers the hole next to the door interlock release screw (see fig. 43).

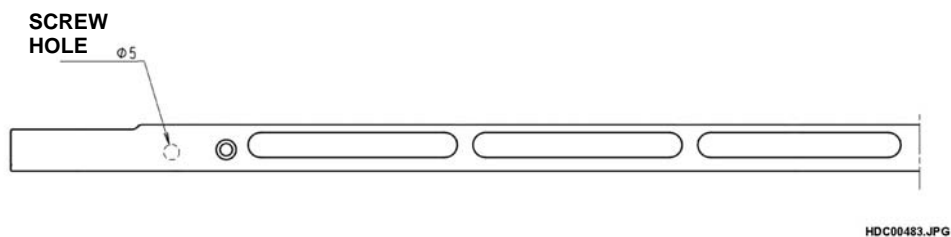


Fig. 45

## 12.4.2 - RELEASING THE DOOR LOCK MANUALLY ON ACCESS PLUS OVENS

To release the door lock manually on Access Plus ovens, it is necessary to remove the hook screw or to lift up the hook (depending on the door interlock, see 12.4.2.3 and 12.4.2.4) through a hole on the oven front panel.

### 12.4.2.1 - HOLE POSITION ON MODELS WITH TRADITIONAL OPENING DOOR AND LEFT HINGED DOOR

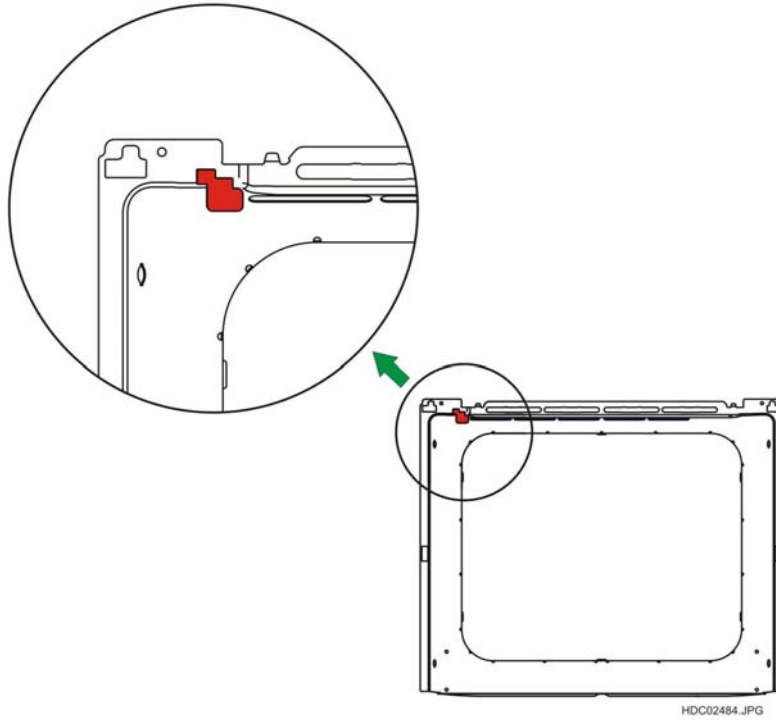


Fig. 46

### 12.4.2.2 - HOLE POSITION ON MODELS WITH RIGHT HINGED DOOR

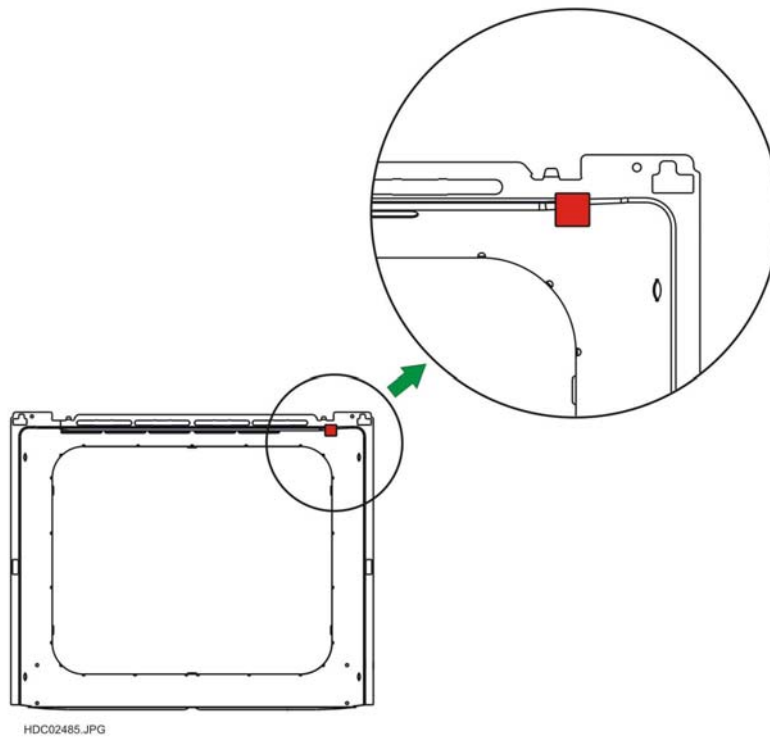


Fig. 47

### 12.4.2.3 - RELEASING THE “METEOR” DOOR LOCK

To release the door lock manually on Access Plus ovens with “METEOR” door lock, it is necessary to remove the hook screw through a hole on the front panel (see 11.4.1):

- 1 - Insert a 3mm screwdriver into the hole to remove the hook fixing screw.
- 2 - Remove the hook fixing screw, in this way the closure hook lifts up releasing the door (see Fig. 48).
- 3 - Check the operation of the door lock and if faulty replace it (see 11.5).

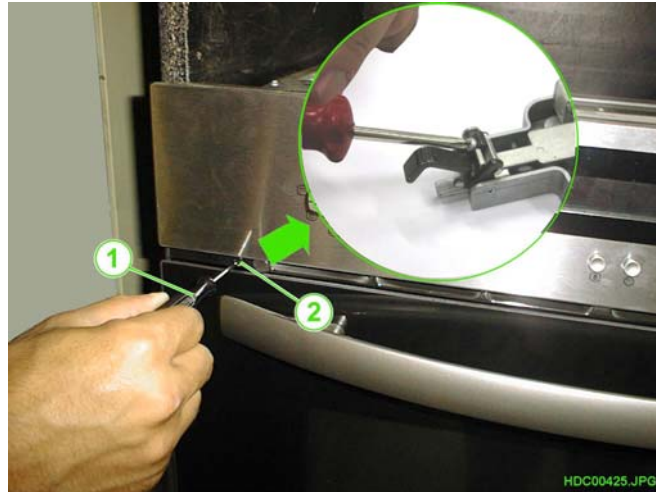


Fig. 48

- 1 - 3 mm CROSS SCREWDRIVER
- 2 - HOLE TO ACCESS THE SCREW

### 12.4.2.4 - RELEASING THE “ELTEK” DOOR LOCK

To release the door lock manually on Access Plus ovens with “ELTEK” door lock, it is necessary to remove directly the hook through the hole on the front panel (see 11.4.1):

- 1 - Insert a 3mm screwdriver into the hole to lift up the closure hook of about 3 mm to allow releasing the door lock (see Fig. 49).
- 2 - Check the operation of the door lock and if faulty replace it (see 12.5).

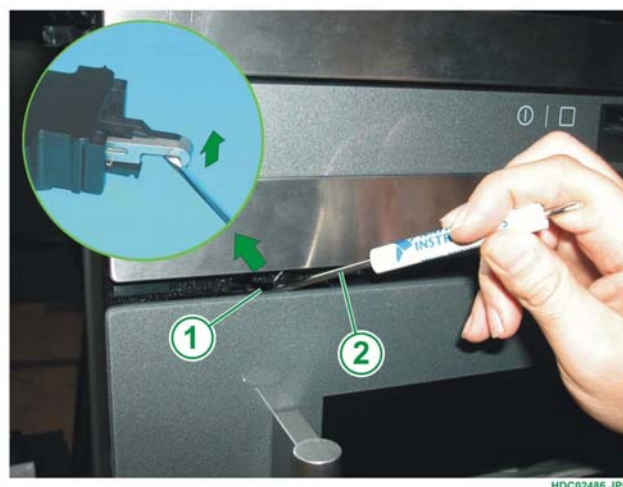


Fig. 49

- 1 - 3 mm SCREWDRIVER
- 2 - HOLE TO ACCESS THE DOOR LOCK HOOK



## 12.5 - TESTING THE DOOR LOCK

- Measure the resistance of the winding of the door lock actioning motor, which should be about 9.5  $\Omega$ .
- Check that the two microswitches open and close correctly in the various sequences (door open, door closed etc.) as indicated in Service Manual 599 36 07 64, section 3.5.

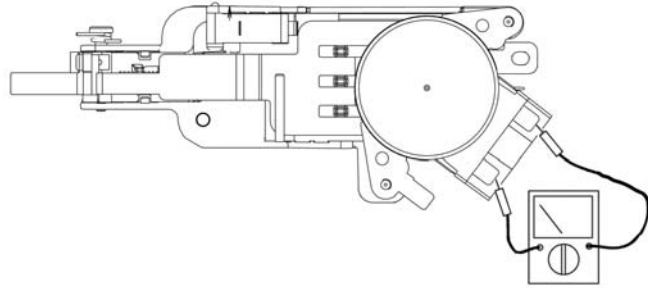


Fig. 50

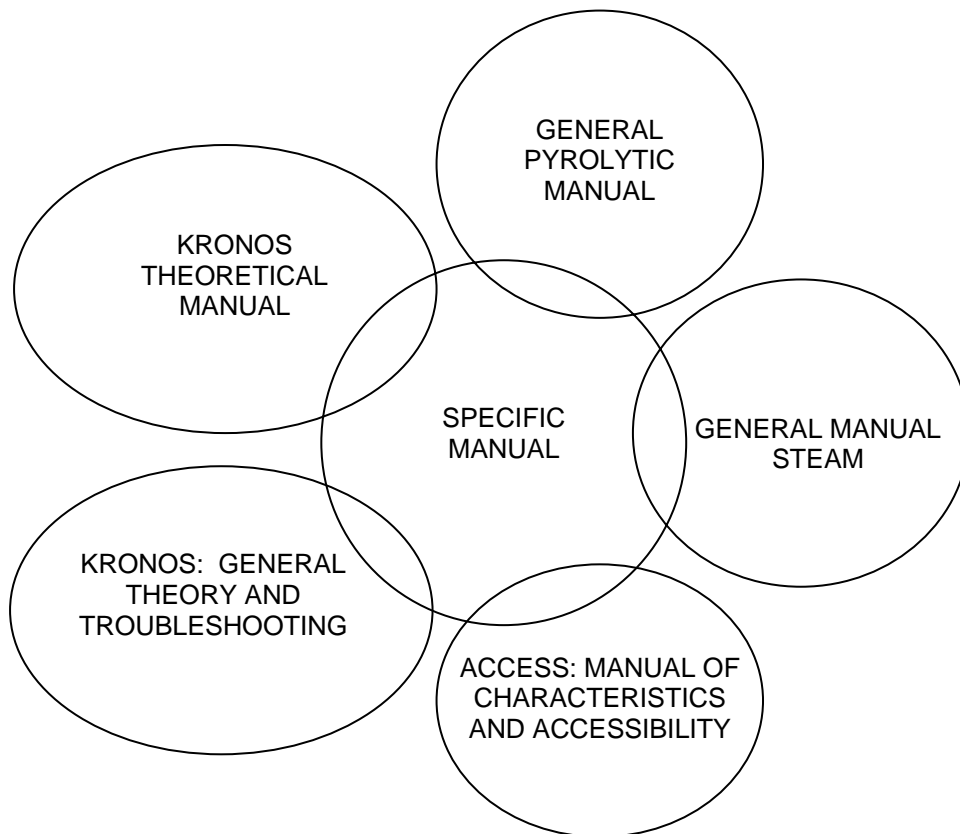
HDC00481.JPG

### 13 - ACCESS/KRONOS: ORGANIZATION OF SERVICE MANUALS

In view of the quantity of theoretical, technical and practical information relative to the various combinations for the structure of the ACCESS/KRONOS system, this information has been subdivided into Service Manuals describing the general concepts, and separate Service Manuals containing specific information relative to each group of appliances.

Only the specific Service Manuals should be used for a specific appliance.

The various Service Manuals are as shown in the diagram below.



## 14 - REVISIONS

REVISION	DATE	
01	03/2008	- Added Chapter 9 - VARIANTS FOR MODELS WITH LIGHT BAR on page 25. - Added diagram on page 41. - Added "Eltek" door lock in 12.4 page 47.