

ET: xxx

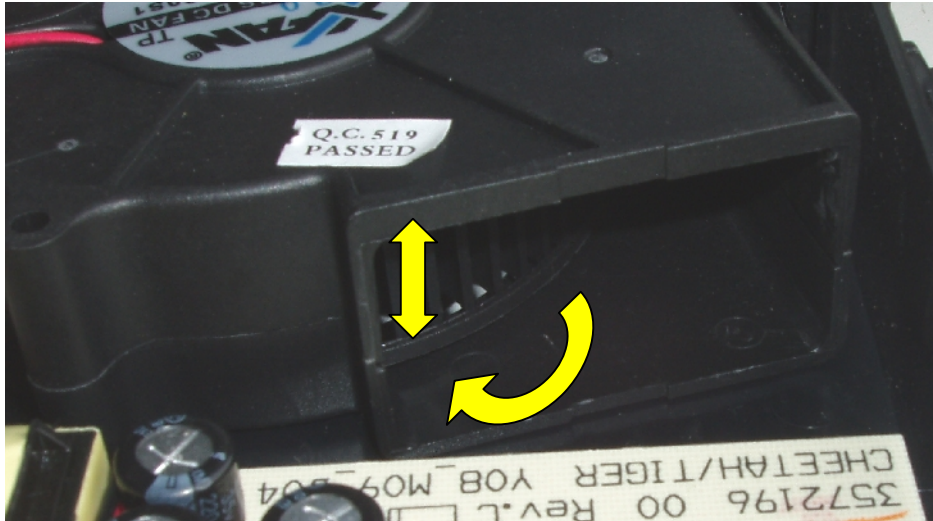
1. Verify the broken fan

You should feel the magnetic bearing during rotation.

Moving the impeller downwards – the impeller should come back.

The gap to the bottom - housing should be about 2 mm.

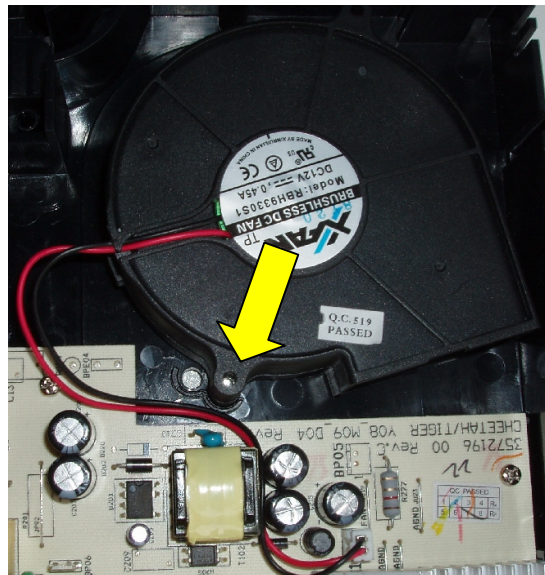
If there is a doubt compare left-right or with a new fan.



2. Replace the Fan in the Cheetah Induction module

remove the screws from the rear

change the fan, use correct position, plug in connector, screw the both screws

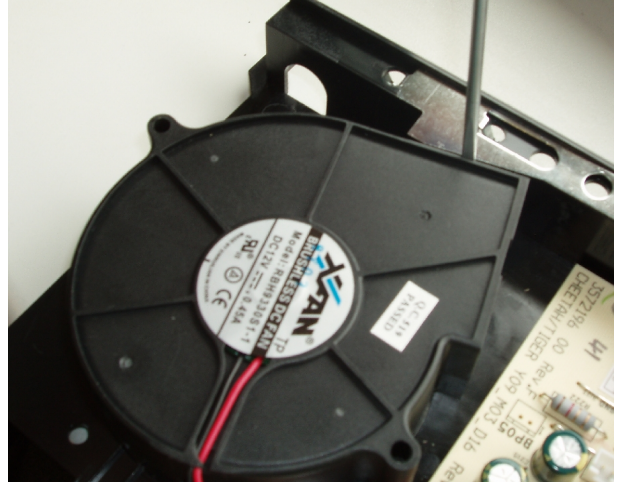


3. Replace the Fan in the Tiger Induction Module

3.1. Prepare the Tiger Induction module

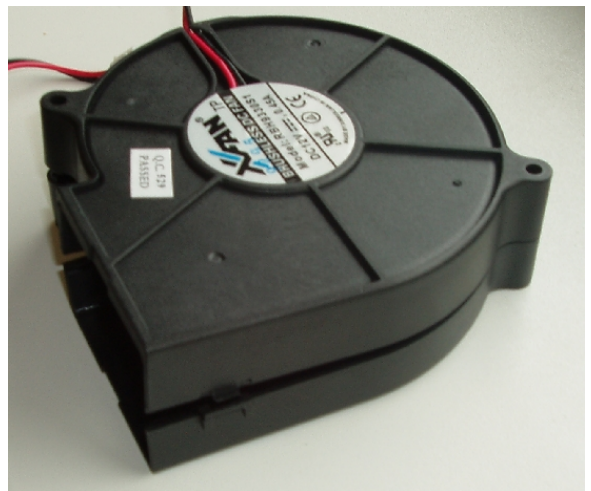
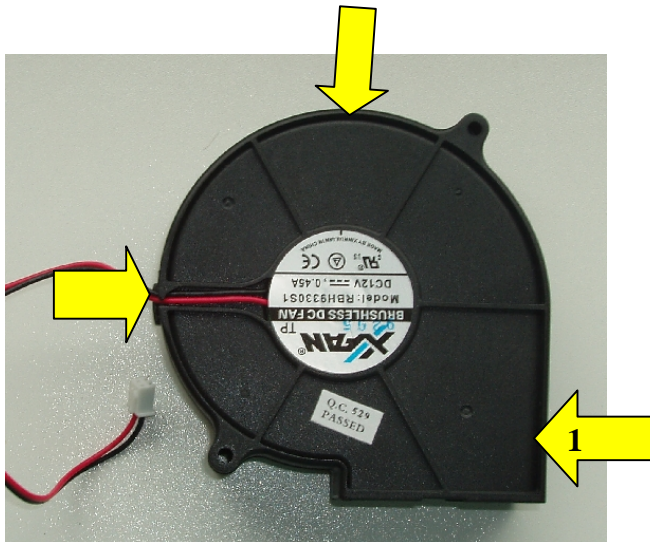
remove the screw from the rear (2x)

open the upper case;
starting on the right side



3.2. Prepare the Cheetah fan

remove the lower case; start at #1



3.3. Assemble the fan

Snap in all three hooks.

Double-check the gap between upper and lower case !!!!

If one of the hooks is broken remove the plastic parts carefully – don't worry the screws are good enough; plug the connector and screw both screws.