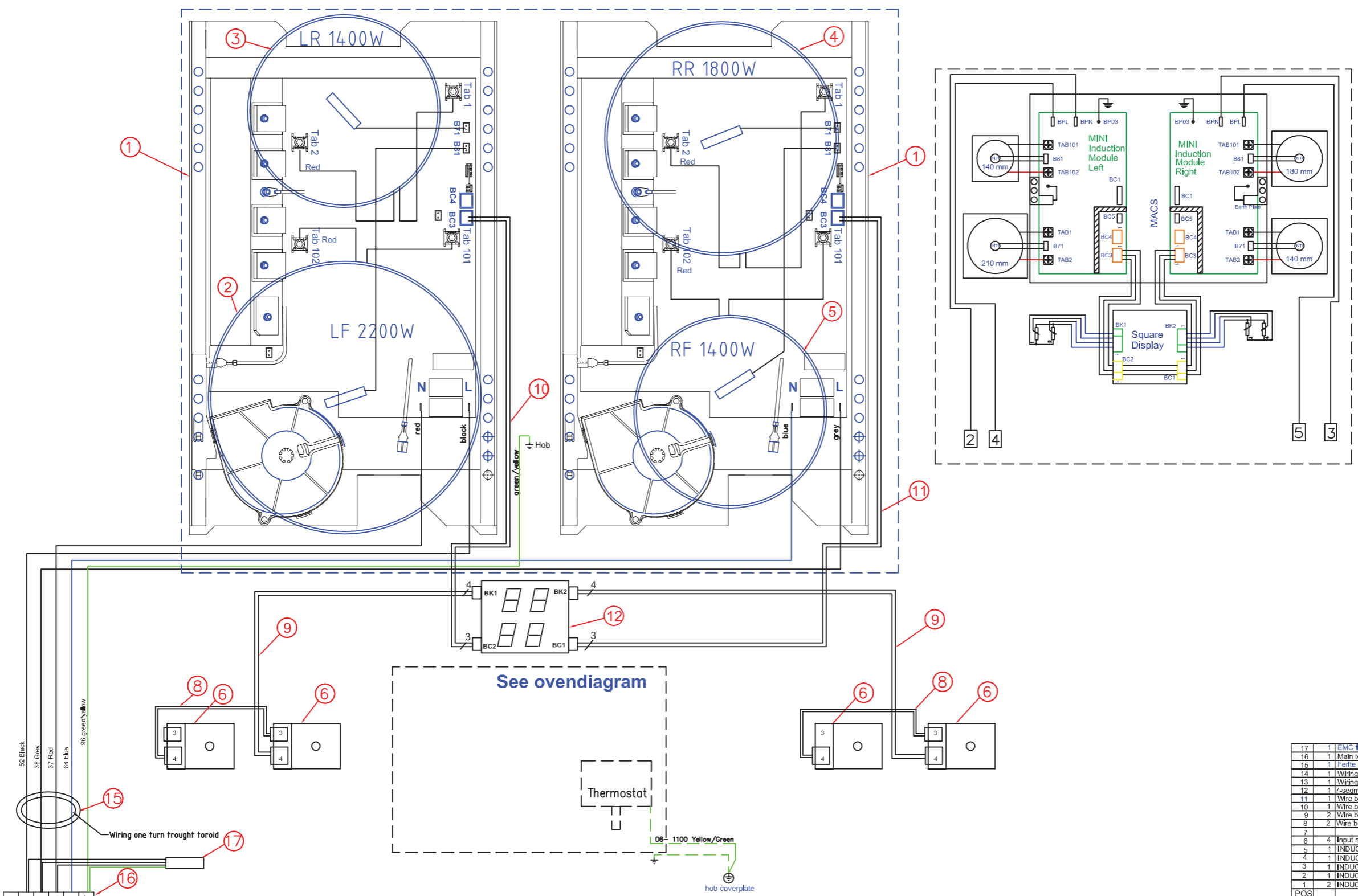


This drawing contains confidential information and is the property of Electrolux. Without whose permission it may not be copied, shown or handed to a third party or otherwise used and it is to be returned promptly upon request to the design owner, who is responsible for the drawing.

Items shown in this drawing must not contain substances that are banned according to Directive, 2002/95/EC, the RoHS Directive (Lead, Cadmium, Mercury, hexavalent Chromium, PBB and PBDE), or substances classified as "Banned" or "Restricted" according to the Electrolux Restricted Materials List.



POS	DESCRIPTION	QUANTITY
17	EMC filter	1
16	Main terminal	1
15	Ferrite Toroid	1
14	Wiring induction supply	1
13	Wiring Mains supply	1
12	7-segment display	1
11	Wire bus Induction	1
10	Wire bus Induction bridge	1
9	Wire bus 7UI-rotary	2
8	Wire bus rotary-rotary	2
7		
6	Input module rotary multi function	4
5	INDUCTION COIL 180MM	1
4	INDUCTION COIL 180MM	1
3	INDUCTION COIL 140MM	1
2	INDUCTION COIL 210MM	1
1	INDUCTION MODULE ELECTRONICS IEIS CPL, EXCL. COILS	2

ID	Description	Elux part No.
	Wiring hob harness	349 6074-04
	List of crimp contacts	330 1766
	Component list	330 2222
	Insulation house	330 4175

A First edition		P.Hoffmann	DGT86069	2009-10-05
POS.	MODIFICATIONS	SIGNATURE	REQUEST	DATE
MATERIAL	WEIGHT	DESIGN USERS	SCALE	EUROPEAN METHOD
TREATMENT			REPLACES	
DESIGN OWNER	CHD Hoffmann	2D ONLY	DERIVED FROM	
ETC	DATE 2008-02-18	APPR Hoffmann	SUPPLY SPECIFICATIONS	
TITLE		wiring hob assembly		
NUMBER		349 6076		
REV		A		
		1/1		

349 6076 01				hob assembly SIR 70 cm Induction
VARIANT NUMBER	REPLACED NUMBER	POS.	CHANGES FROM THE BASE NUMBER	
A3	[DF03]	8	7	6

GENERAL TOLERANCES
ANGLES
LENGTHS AND DIAMETERS