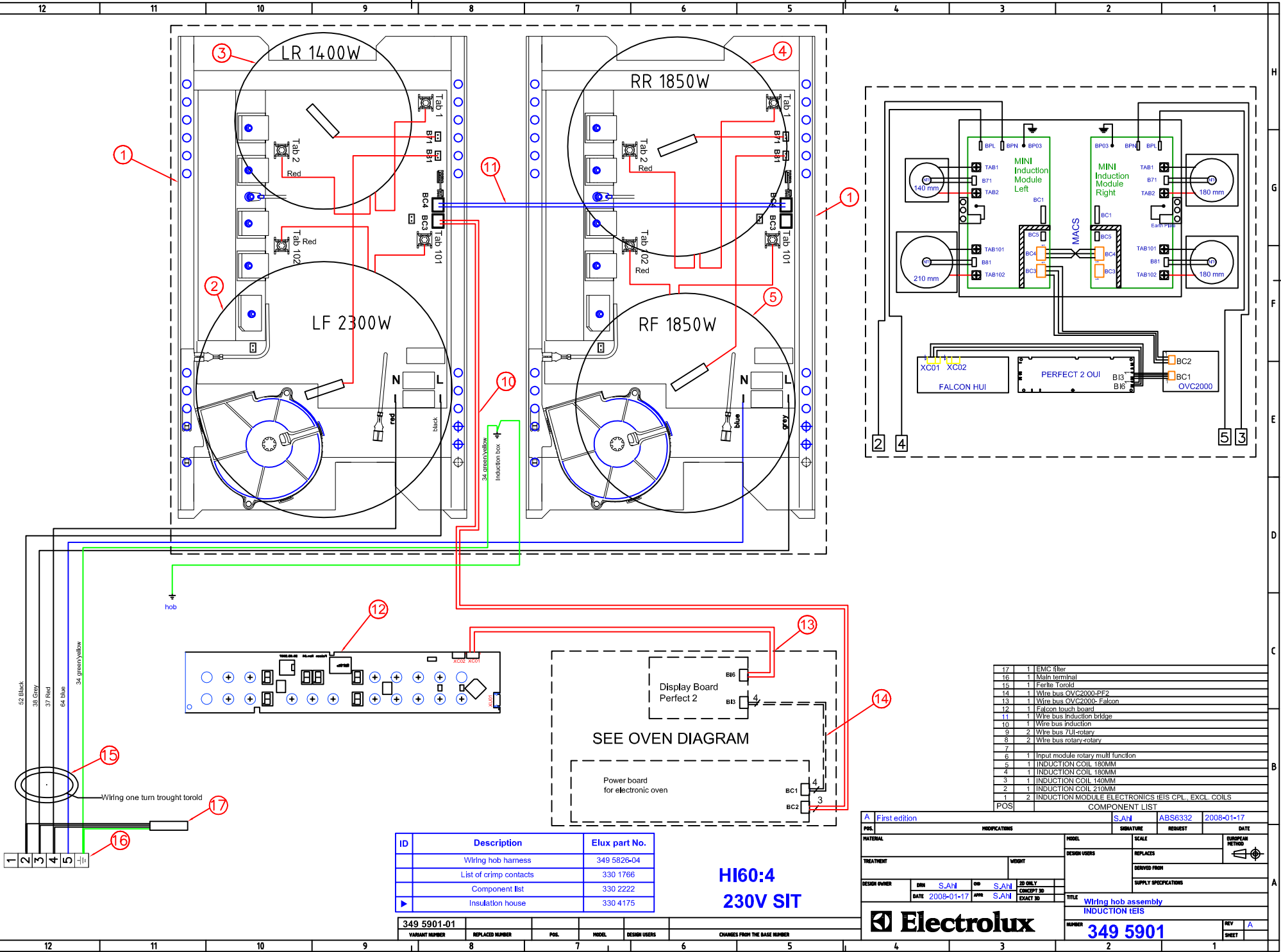


This drawing contains confidential information and is the property of Electrolux. Without written permission, it is not to be reproduced, copied, disseminated or otherwise used and it is to be returned immediately upon request to the design owner, who is responsible for the drawing.

Items shown in this drawing must not contain substances that are banned according to Directive 2002/95/EC, the RoHS Directive. The design owner, Electrolux, hereby certifies that the products shown in this drawing do not contain "banned" or "restricted" substances according to the Electrolux Restricted Materials List.

GENERAL DIMENSIONS
UNITS AND DIMENSIONS



POS	INDICATIONS	SIGNATURE	REQUEST	DATE
17	1	EMC filter		
16	1	Main terminal		
15	1	Ferite Toroid		
14	1	Wire bus OVC2000-PF2		
13	1	Wire bus OVC2000-Falcon		
12	1	Falcon touch board		
11	1	Wire bus Induction bridge		
10	1	Wire bus induction		
9	2	Wire bus 7UJ-rotary		
8	2	Wire bus rotary-rotary		
7				
6	1	Input module rotary multi function		
5	1	INDUCTION COIL 180MM		
4	1	INDUCTION COIL 180MM		
3	1	INDUCTION COIL 140MM		
2	1	INDUCTION COIL 210MM		
1	2	INDUCTION MODULE ELECTRONICS IEIS CPL, EXCL. COILS		

COMPONENT LIST				
POS	INDICATIONS	SIGNATURE	REQUEST	DATE
A	First edition	S.A.H	ABS6332	2008-01-17

ID	Description	Elux part No.
1	Wiring hob harness	349 5826-04
2	List of crimp contacts	330 1766
3	Component list	330 2222
4	Insulation house	330 4175

HI60:4
230V SIT

VARIANT NUMBER	REPLACED NUMBER	POS.	MODEL	DESIGN USERS	CHANGES FROM THE BASE MODEL
349 5901-01					



349 5901