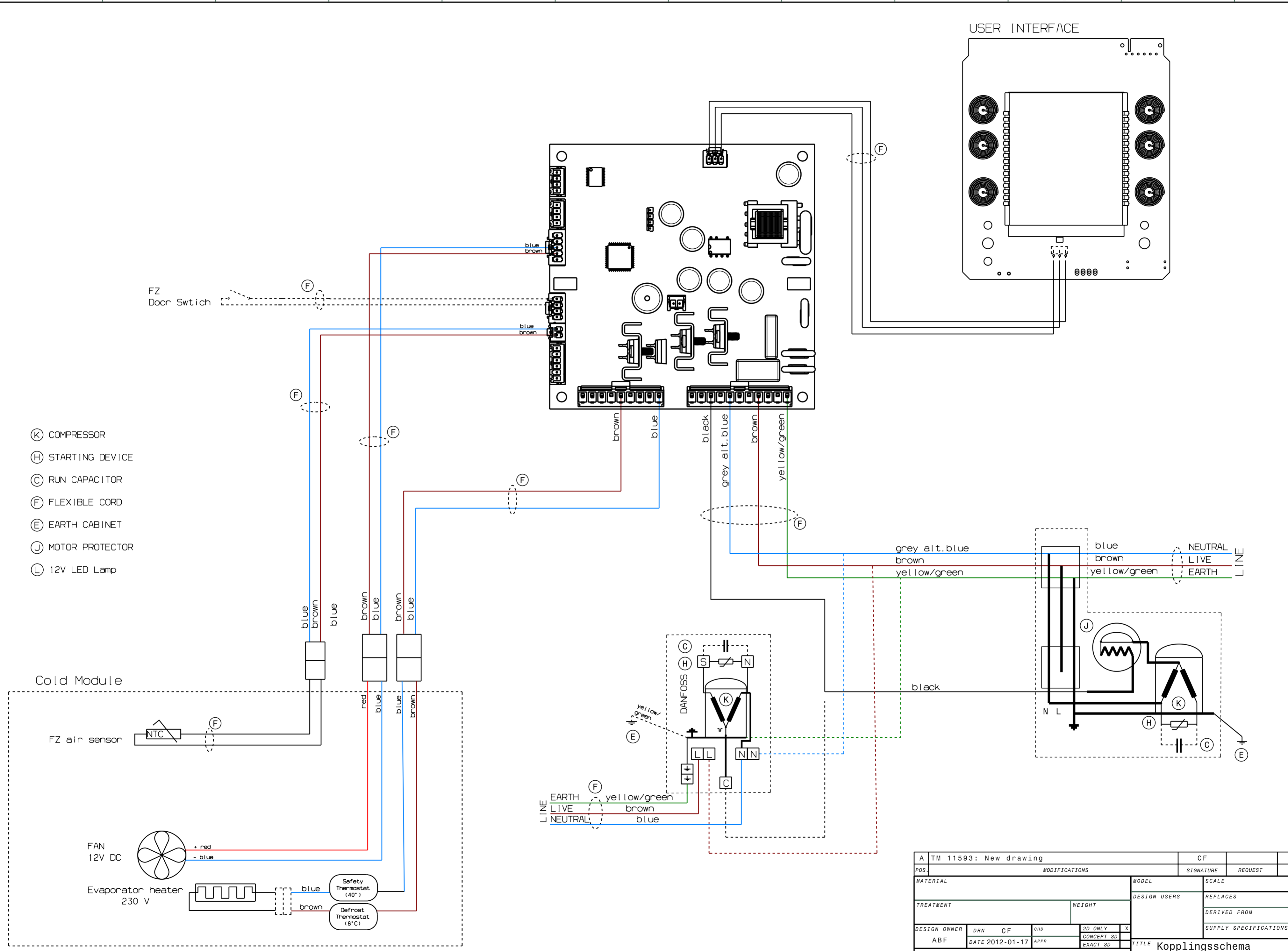
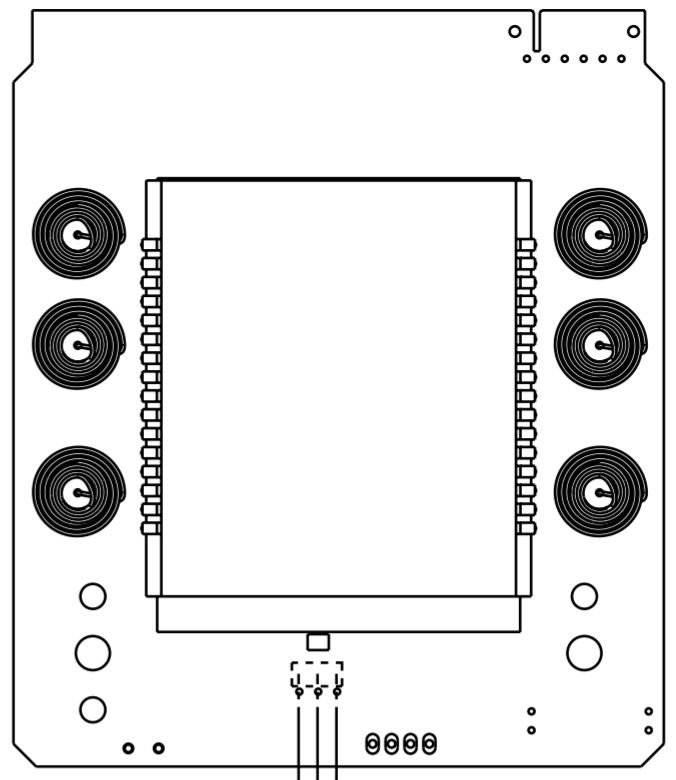


This drawing contains confidential information and is the property of Electrolux, without whose permission it may not be copied, shown or handed to a third party or otherwise used and it is to be returned promptly upon request to the design owner, who is responsible for the drawing.

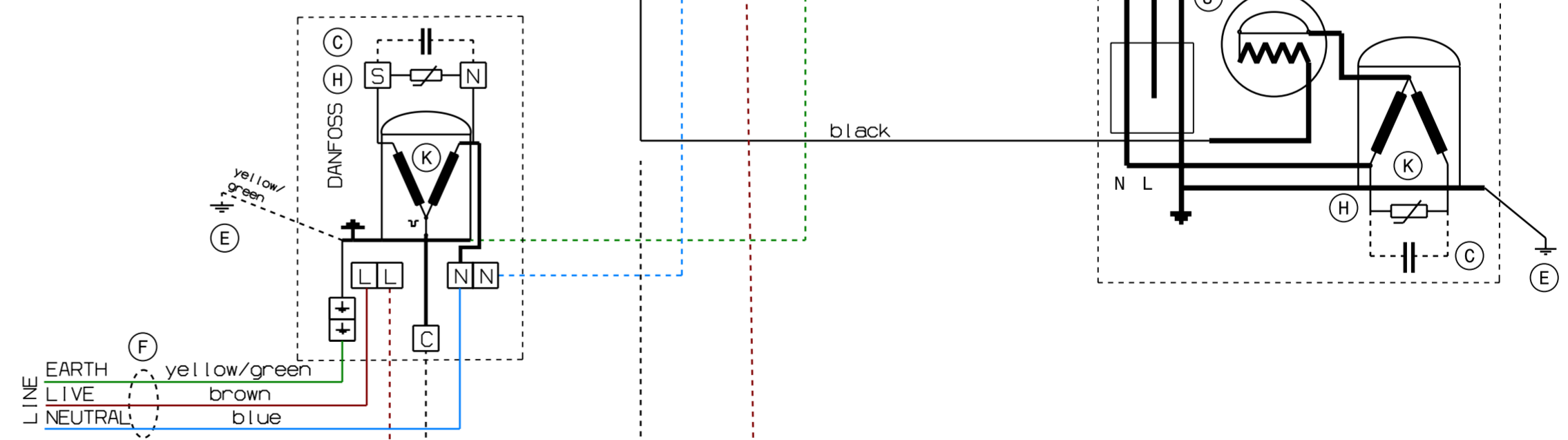
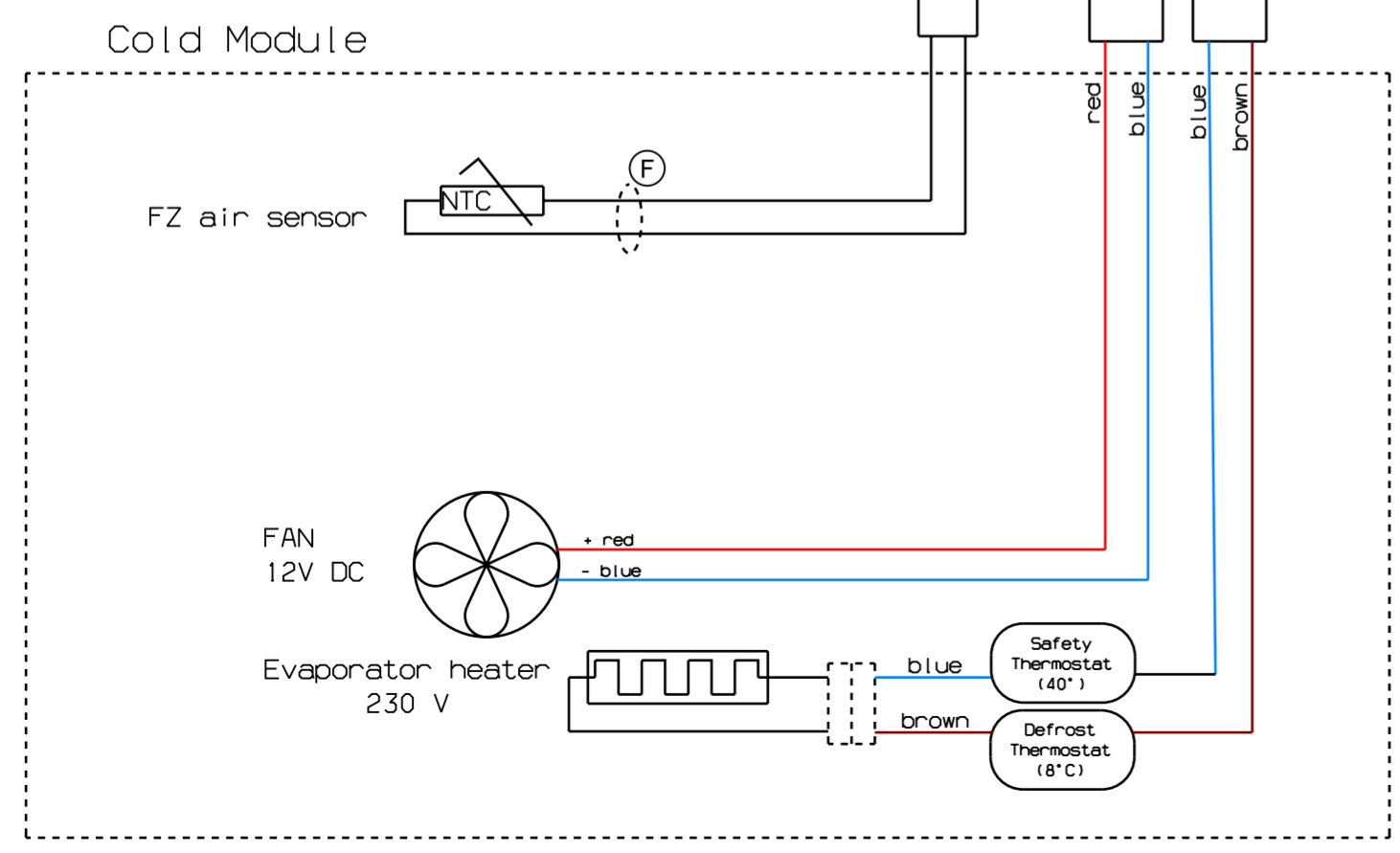
Items shown in this drawing must not contain substances that are banned according to Directive, 2002/95/EC, the RoHS Directive (Lead, Cadmium, Mercury, hexavalent Chromium, PBB and PBDE), or substances classified as "Banned" or "Restricted" according to the Electrolux Restricted Materials List.



USER INTERFACE



- (K) COMPRESSOR
- (H) STARTING DEVICE
- (C) RUN CAPACITOR
- (F) FLEXIBLE CORD
- (E) EARTH CABINET
- (J) MOTOR PROTECTOR
- (L) 12V LED Lamp



A TM 11593: New drawing		CF	2012-01-17		
POS.	MODIFICATIONS		SIGNATURE	REQUEST	DATE
MATERIAL		MODEL	SCALE		EUROPEAN METHOD
TREATMENT		WEIGHT	DESIGN USERS		REPLACES
DESIGN OWNER		DRN	CF	CHD	2D ONLY
ABF	DATE 2012-01-17	APPR	EXACT 3D		X
TITLE		Kopplungsschema			
NUMBER		243 3850			
Variant No.		243 3850-00			
Electrolux		REV A			
SHEET		1/1			