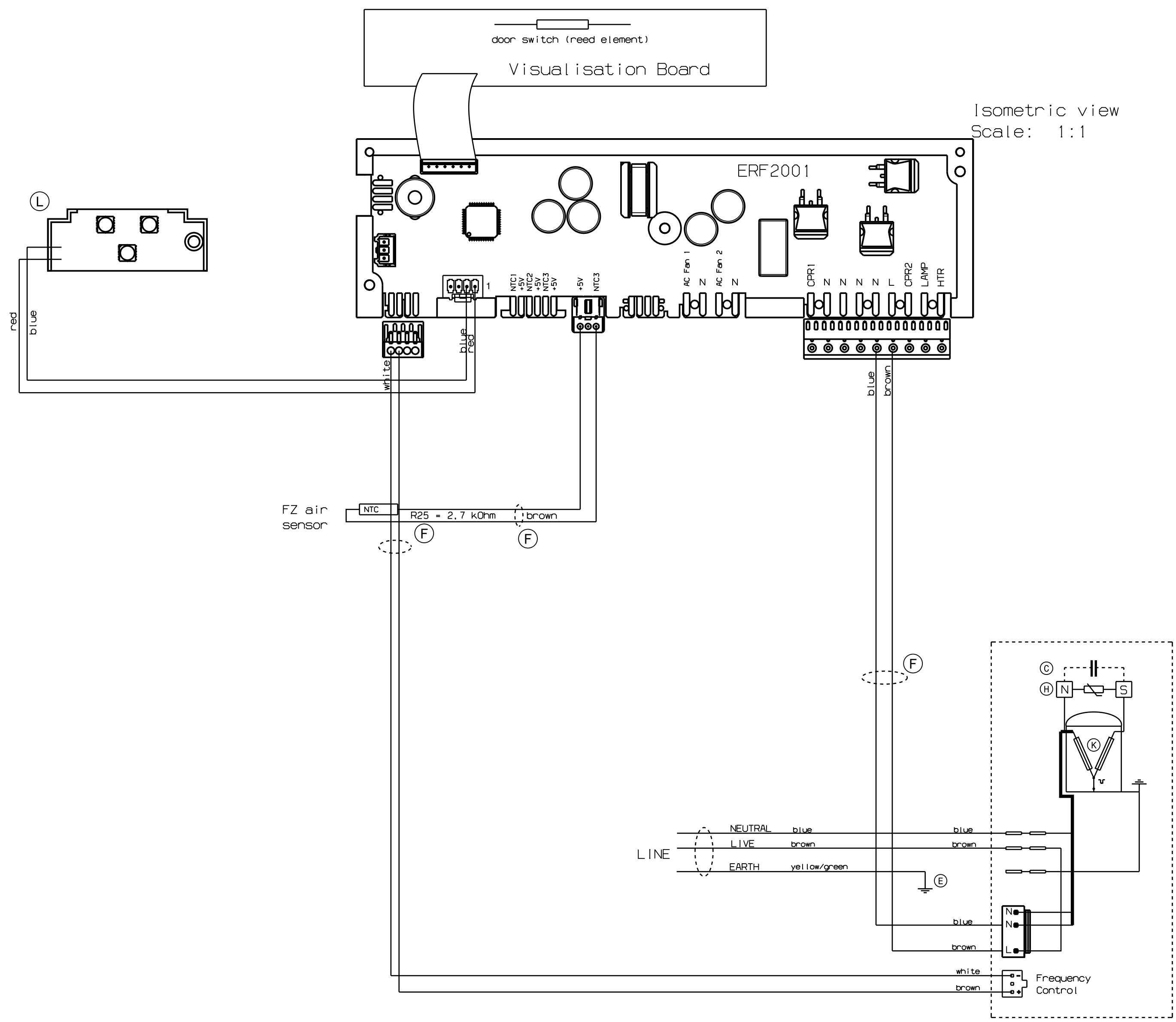


This drawing contains confidential information and is the property of Electrolux, without whose permission it may not be copied, shown or handed to a third party or otherwise used and it is to be returned promptly upon request to the design owner, who is responsible for the drawing.

Items shown in this drawing must not contain substances that are banned according to Directive, 2002/95/EC, the RoHS Directive (Lead, Cadmium, Mercury, hexavalent Chromium, PBB and PBDE), or substances classified as "Banned" or "Restricted" according to the Electrolux Restricted Materials List.

GENERAL TOLERANCES  
 ANGLES  
 LENGTHS AND DIAMETERS



- ⓕ Flexible Cord
- ⓔ Earth Cabinet
- Ⓚ Compressor
- ⓗ Starting Device
- Ⓒ Run Capacitor
- Ⓝ Motor Protector
- Ⓛ 12V LED Light

003	TM 13083: VSD cables and VSD compressor added	SB	ABF	2013-04-10
B	TM 12053: Changed earth connection	CF		2012-01-24
A	TM 11787: New drawing	CF		2012-01-11
POS.	MODIFICATIONS	SIGNATURE	REQUEST	DATE
MATERIAL	MODEL	SCALE	EUROPEAN METHOD	
TREATMENT	WEIGHT	DESIGN USERS	REPLACES	
DESIGN OWNER	DRN	CF	CHD	
ABF	DATE 2012-01-11	APPR	CONCEPT 3D	EXACT 3D
TITLE		Wiring Diagram		
NUMBER		243 3829		
REV		003		
SHEET		1/1		

243382900 / C  
VARIANT NUMBER



REV 003  
SHEET 1/1