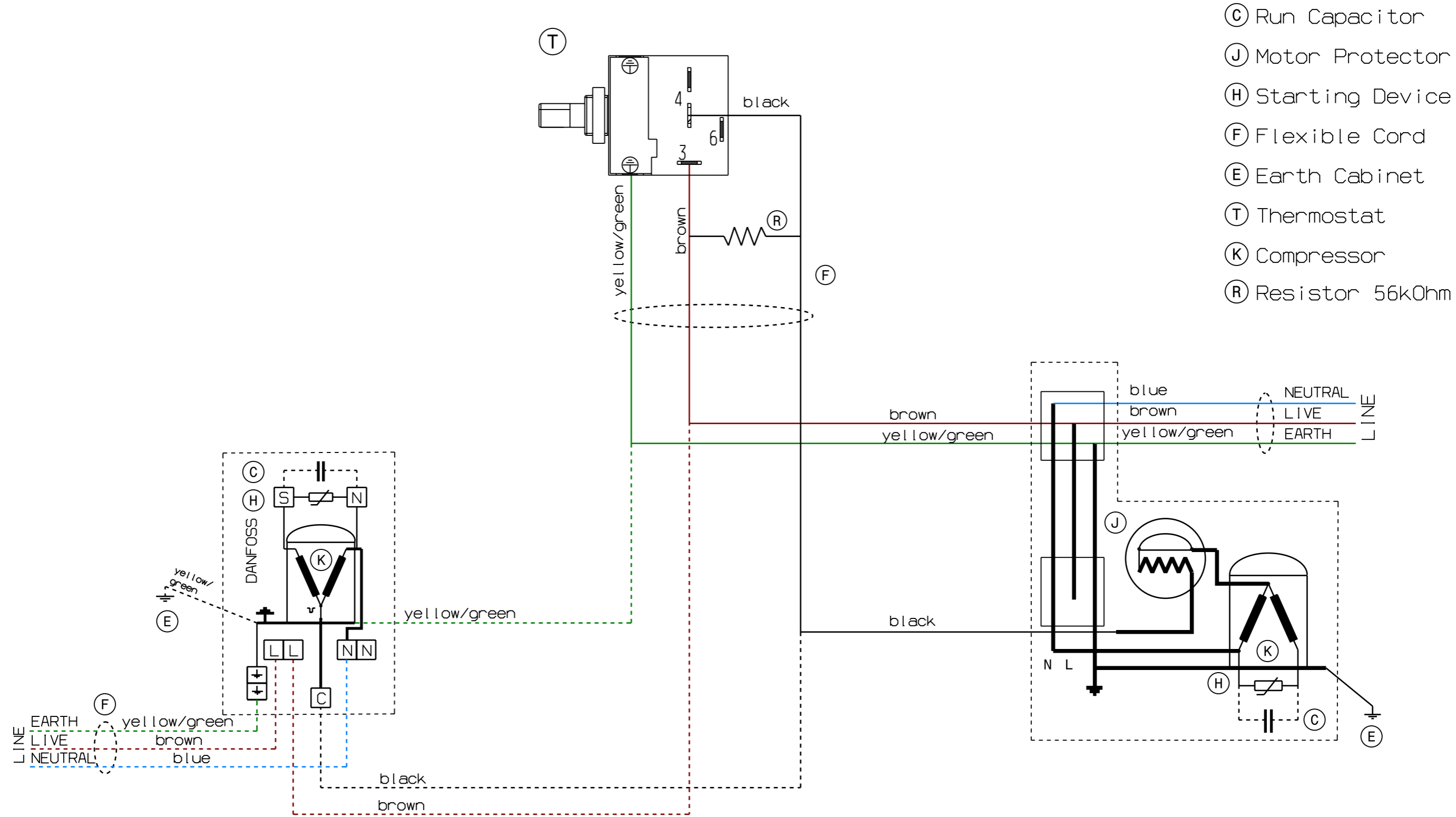


This drawing contains confidential information and is the property of Electrolux, without whose permission it may not be copied, shown or handed to a third party or otherwise used and it is to be returned promptly upon request to the design owner, who is responsible for the drawing.

Components reflected by this drawing must not contain substances or coatings of any of the substances banned according to Dir. 2002/95/EC, RoHS, or substances on the REACH candidate list published on <http://echa.europa.eu/>. They have to conform in all respects with Electrolux Restricted Materials List as published on www.electrolux.com. Upon request documentation demonstrating compliance with these requirements shall be immediately provided by the supplier to Electrolux.

Dimensions, data and characteristics, which are subjected to Statistic Process Control (SPC) are marked with



- Ⓒ Run Capacitor
- Ⓙ Motor Protector
- ⓓ Starting Device
- Ⓕ Flexible Cord
- Ⓔ Earth Cabinet
- Ⓓ Thermostat
- Ⓚ Compressor
- Ⓡ Resistor 56k0hm

LINE EARTH yellow/green
LIVE brown
NEUTRAL blue

blue NEUTRAL
brown LIVE
yellow/green EARTH

A		TM 11593: Introduction			CF		2012-01-17	
POS.	MODIFICATIONS				SIGNATURE	REQUEST	DATE	
MATERIAL			MODEL		SCALE		EUROPEAN METHOD 	
TREATMENT			WEIGHT		REPLACES			
DESIGN OWNER			DRN	CF	CHD	2D ONLY	X	
ABF			DATE	2012-01-17	APPR	CONCEPT 3D		
					EXACT 3D			
TITLE					Wiring, Diagram			
					Kopplingschema			
NUMBER					243 3658		REV	A
							SHEET	1 / 1

Any approved discrepancy will be documented in the Inspection report.
Eventuella godkända avvikelser dokumenteras i Kontrollrapporten.

208 3658-00
VARIANT NUMBER

