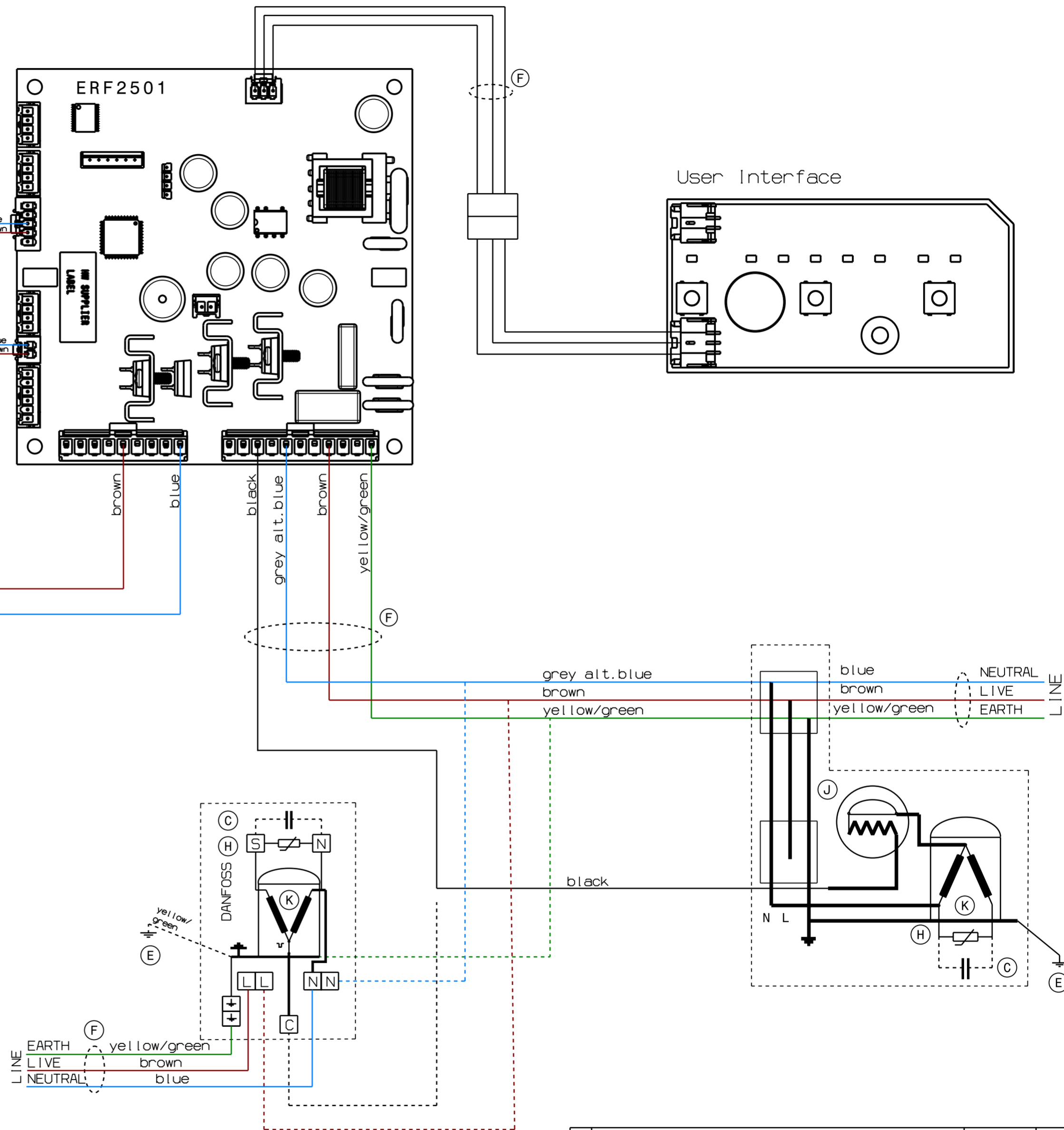
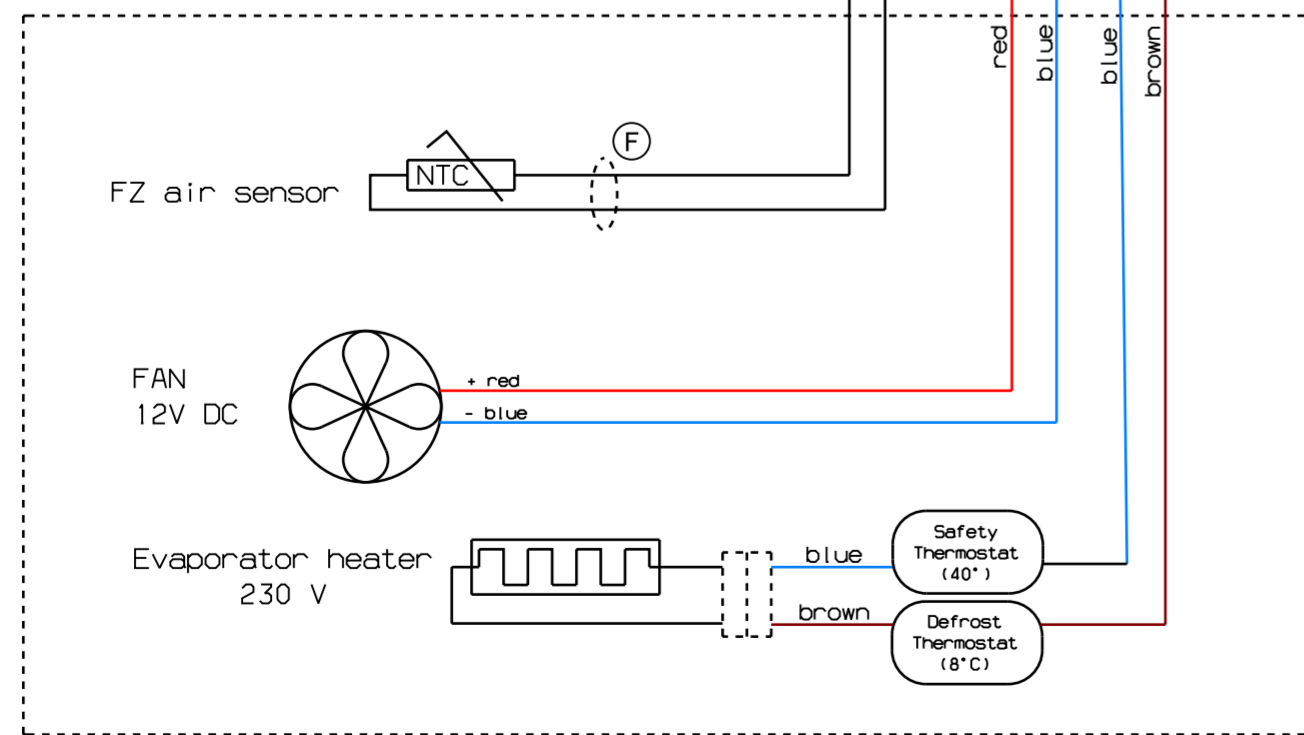


Dimensions, data and characteristics, which are subjected to Statistic Process Control (SPC) are marked with  

This drawing contains confidential information and is the property of Electrolux, without whose permission it may not be reproduced, stored in a retrieval system or otherwise used and it is to be returned promptly upon request to the design owner, who is responsible for the drawing.

- (K) COMPRESSOR
- (H) STARTING DEVICE
- (C) RUN CAPACITOR
- (F) FLEXIBLE CORD
- (E) EARTH CABINET
- (J) MOTOR PROTECTOR

Cold Module



Any approved discrepancy will be documented in the Inspection report.  
 Eventuella godkända avvikelser dokumenteras i Kontrollrapporten.

243 3657-00  
 Variant no.



A TM 11593: Introduction		CF	2011-10-07
POS.	MODIFICATIONS		DATE
MATERIAL		SCALE	EUROPEAN METHOD
TREATMENT		DESIGN USERS	REPLACES
DESIGN OWNER		DRN	CF
ABF		DATE 2011-10-07	APPR
TITLE		Wiring, Diagram	
NUMBER		243 3657	
REV		A	
SHEET		1/1	