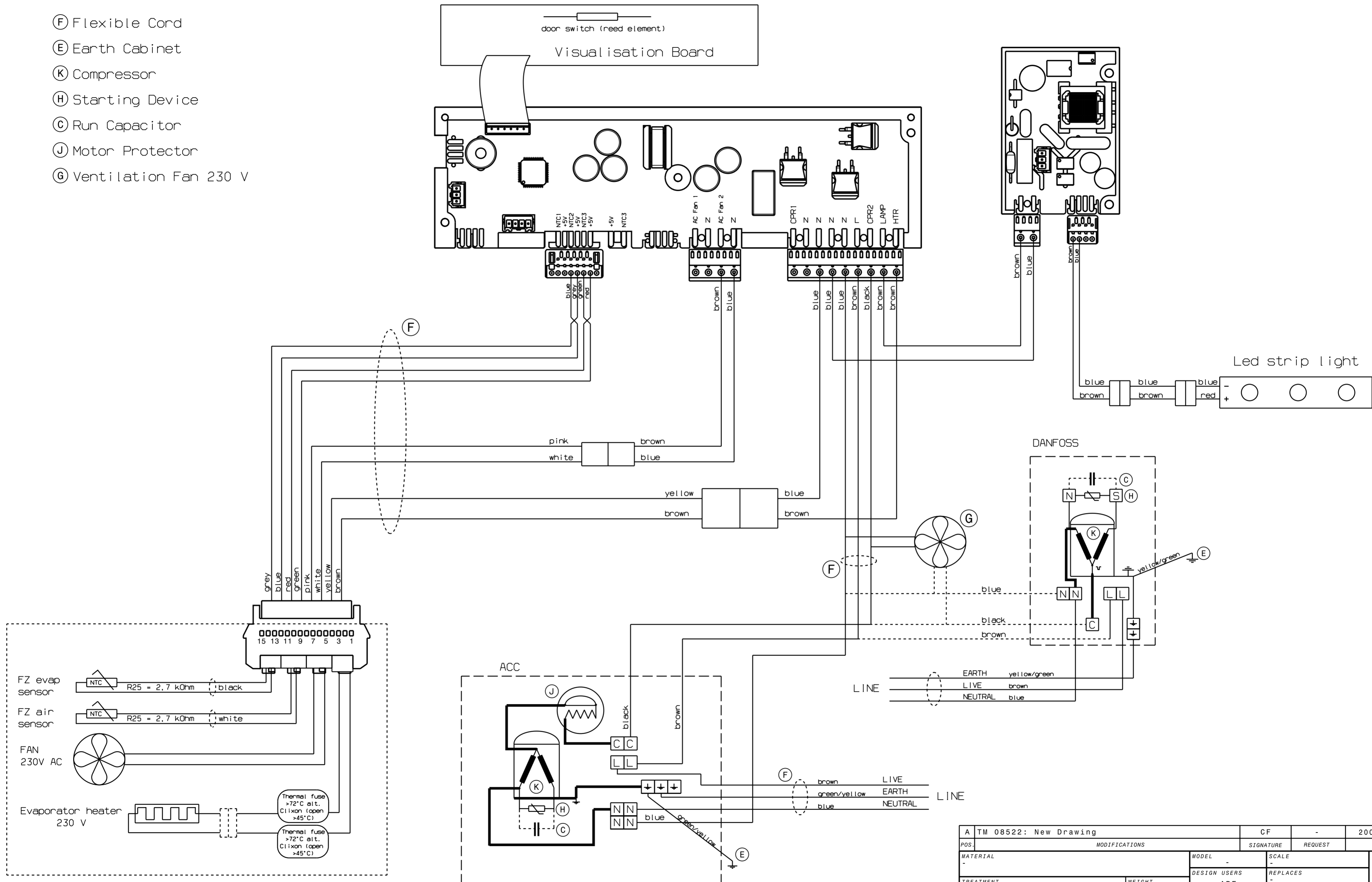


This drawing contains confidential information and is the property of Electrolux, without whose permission it may not be copied, shown or handed to a third party or otherwise used and it is to be returned promptly upon request to the design owner, who is responsible for the drawing.

- ⓕ Flexible Cord
- ⓔ Earth Cabinet
- Ⓚ Compressor
- ⓗ Starting Device
- Ⓒ Run Capacitor
- Ⓝ Motor Protector
- ⓖ Ventilation Fan 230 V



Items shown in this drawing must not contain substances that are banned according to Directive, 2002/95/EC, the RoHS Directive (Lead, Cadmium, Mercury, hexavalent Chromium, PBB and PBDE), or substances classified as "Banned" or "Restricted" according to the Electrolux Restricted Materials List.

GENERAL TOLERANCES
 ANGLES
 LENGTHS AND DIAMETERS

A TM 08522: New Drawing		CF	-	2008-09-16
POS.	MODIFICATIONS		SIGNATURE	REQUEST
MATERIAL	MODEL	SCALE	EUROPEAN METHOD	
TREATMENT	WEIGHT	DESIGN USERS	REPLACES	
DESIGN OWNER	DRN	CF	CHD	
ABF	DATE 2008-09-16	APPR	CONCEPT 3D	SUPPLY SPECIFICATIONS
TITLE		Wiring Schematics		
Kopplungsschema		NUMBER	REV	
208 7831		208 7831		A
VARIANT NUMBER		SHEET		1/1

208 7831-00
VARIANT NUMBER

