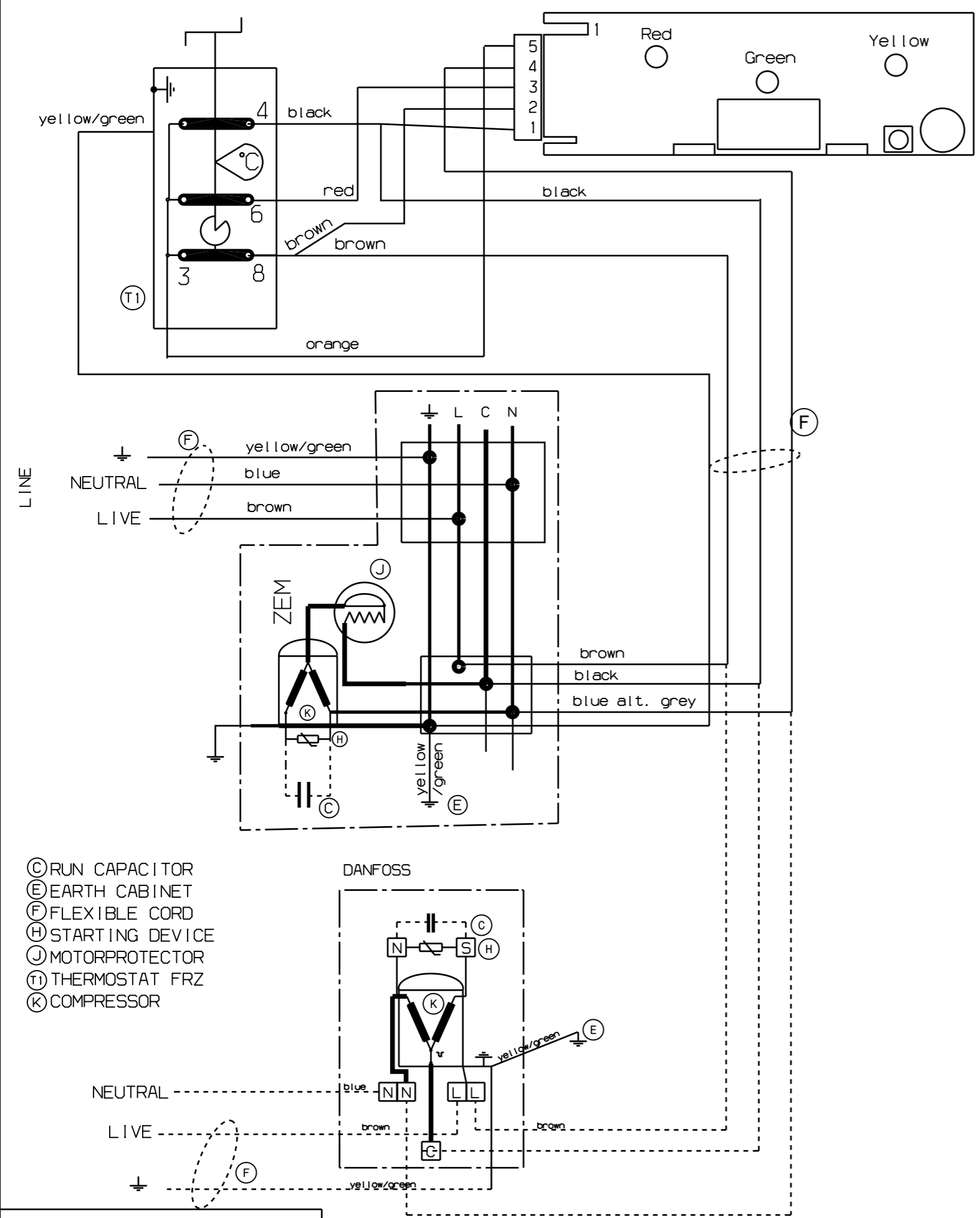


This drawing contains confidential information and is the property of Electrolux, without whose permission it may not be copied, shown or handed to a third party or otherwise used and it is to be returned promptly upon request to the design owner, who is responsible for the drawing.

Components reflected by this drawing must not contain substances or coatings of any of the substances banned according to Dir. 2002/95/EC, RoHS, or substances on the REACH candidate list published on <http://echa.europa.eu/>. They have to conform in all respects with Electrolux Restricted Materials List as published on www.electrolux.com. Upon request documentation demonstrating compliance with these requirements shall be immediately provided by the supplier to Electrolux.

Dimensions, data and characteristics, which are subjected to Statistic Process Control (SPC) are marked with



- Ⓒ RUN CAPACITOR
- Ⓔ EARTH CABINET
- Ⓕ FLEXIBLE CORD
- Ⓖ STARTING DEVICE
- Ⓙ MOTORPROTECTOR
- Ⓣ THERMOSTAT FRZ
- Ⓚ COMPRESSOR

Any approved discrepancy will be documented in the Inspection report.
Eventuella godkända avvikelser dokumenteras i Kontrollrapporten.

B		TM 09328, converted to catia		VL	ABF	2009-06-18	
A		TM 06623		SB	-	-	
POS.	MODIFICATIONS				SIGNATURE	REQUEST	DATE
MATERIAL			MODEL		SCALE		EUROPEAN METHOD
TREATMENT			WEIGHT		REPLACES		
DESIGN OWNER			DESIGN USERS		DERIVED FROM		SUPPLY SPECIFICATIONS
MA			ABF				
DRN	SB	CHD	2D ONLY	TITLE			
DATE	06-10-04	APPR	CONCEPT 3D	Wiring diagram			
			EXACT 3D	Kopplingschema			
				NUMBER			REV
				208 61 40			B
							SHEET
							1 / 1

208 61 40-00
Variant no.

