

HOB SWITCH (clockwise rotation)

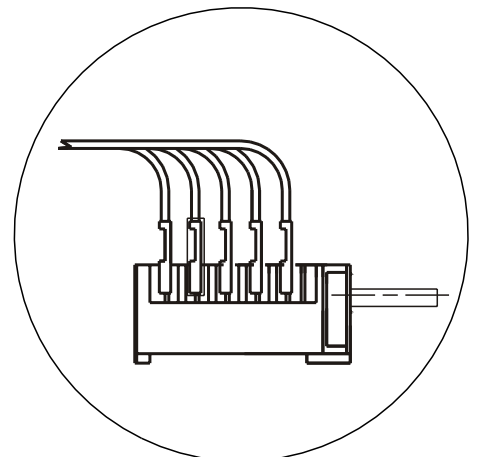
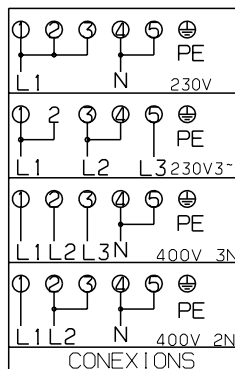
POS	0	1	2	3	4	5	6
4 - P2							
3 - P2							
3 - P1							
1 - P1							
2 - P1							
5 - P3							

46. 27266. 620

OVEN SWITCH

POS.	0	1	2	3	4	5	6
4-P2		■	■	■	■	■	■
3-P1			■	■	■	■	■
1-P1				■	■	■	■
2-P1					■	■	■
5-P3		■	■	■	■	■	■

46. 27866. 501



342750885