

- CABLE POSITIONS**  
 1: MOTOR COMMUNICATION  
 2: THERMISTOR  
 3: INLET VALVES  
 4: DOOR LOCK, DRAIN PUMP, PREASSURE SWITCH  
 8: POWER  
 9: HEATING ELEMENT, PREASSURE SWITCH  
 10: MOTOR POWER

\*A FUSE CONNECTION USA & CANADA  
 ——— WIRES IN ALL MACHINES  
 - - - INTERNAL CONNECTION

RESISTANCES AT ROOM TEMPERATURE (CA. 20°C/68°F)  
 VALUES WITHIN +/-10% ARE REGARDED AS NORMAL COMPONENT

- F: RADIO INTERFERENCE SUPPRESSION FILTER 680K Ohm  
 EL: HEATING ELEMENT 25 Ohm  
 AP: DRAIN PUMP 50 Hz 144 Ohm  
 AP: DRAIN PUMP 60 Hz 76 Ohm  
 LL: DOOR LOCK, 1-2 122 Ohm  
 NTC: THERMISTOR 6.1 - 3.8 K Ohm  
 IV 1: INLET VALVE 1 3.7 K Ohm  
 IV 2: INLET VALVE 2 3.7 K Ohm  
 IV 3: INLET VALVE 3 3.5 K Ohm  
 MO: MOTOR, 1-3 4,3±7% Ohm  
           1-2 4,3±7% Ohm  
           2-3 4,3±7% Ohm
- MCU: MOTOR CONTROL UNIT  
 N: PRESSURE SWITCH  
 TS: PRESSURE SENSOR  
 TG: TACHO GENERATOR

BA: CONTAINER  
 INKB: INCOMING GROUND



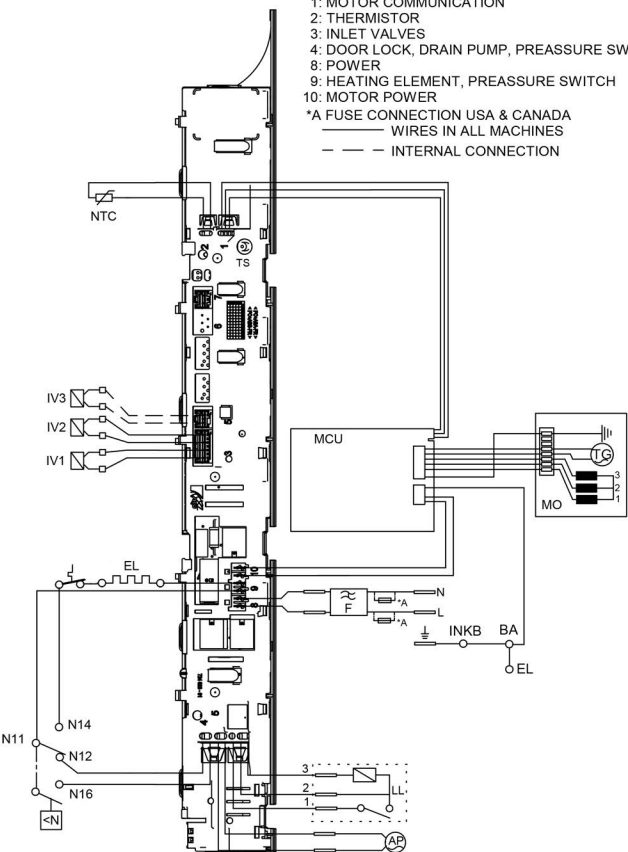
**SERVICE MENU**

- TURN OFF POWER (S1)  
 WAIT FOR AT LEAST 5 SEC  
 HOLD S6 OR S7  
 TURN ON POWER (S1)  
 PRESS S6 OR S7 3 TIMES TO ENTER SERVICE MENU
- PRESS DOOR OPENING (S14) TO CHANGE MENU STEP  
 ROTATE DIAL TO CHANGE IN STEP  
 PRESSING START/STOP (S13) STORES AND EXITS SERVICE MENU

- STEP 1: PRODUCT DATA  
 STEP 2: FAILURE DATA  
 STEP 3: COMPONENT TEST

**TOTAL RESET**

- TURN OFF POWER (S1)  
 WAIT FOR AT LEAST 5 SEC  
 HOLD DOOR OPENING (S14)  
 TURN ON POWER (S1)



CIRCUIT DIAGRAM WM70.2

80 886 18 - 01