

— WIRES IN ALL MACHINES
 - - - WIRES IN SOME MACHINES
 - - - INTERNAL CONNECTION

CABLE POSITIONS
 1: MOTOR COMMUNICATION
 2: THERMISTOR
 3: INLET VALVES
 4: DOOR LOCK, DRAIN PUMP, PREASSURE SWITCH
 6: COMMUNICATION INTERFACE
 7: COIN COLLECTOR
 8: POWER
 9: HEATING ELEMENT, PREASSURE SWITCH
 10: MOTOR POWER

RESISTANCES AT ROOM TEMPERATURE (CA. 20°C/68°F)
 VALUES WITHIN +/-10% ARE REGARDED AS NORMAL COMPONENT

F: RADIO INTERFERENCE SUPPRESSION FILTER 680K Ohm
 EL: HEATING ELEMENT 25 Ohm
 AP: DRAIN PUMP 50 Hz 144 Ohm
 AP: DRAIN PUMP 60 Hz 76 Ohm
 AV: DRAIN VALVE 110/134 Ohm
 LL: DOOR LOCK, 1-2 122 Ohm
 NTC: THERMISTOR 6.1 - 3.8 K Ohm
 IV 1: INLET VALVE 1 3.7 K Ohm
 IV 2: INLET VALVE 2 3.7 K Ohm
 IV3: INLET VLAVE 3 3.5 K Ohm
 MO: MOTOR, 1-3 4,3±7% Ohm
 1-2 4,3±7% Ohm
 2-3 4,3±7% Ohm

MCU: MOTOR CONTROL UNIT

N: PRESSURE SWITCH
 TS: PRESSURE SENSOR
 TG: TACHO GENERATOR
 BA: CONTAINER
 INKB: INCOMING GROUND
 CI: COMMUNICATIONS INTERFACE

USER SETTINGS MENU

TURN OFF POWER (S1)
 WAIT FOR AT LEAST 5 SEC
 HOLD S5
 TURN ON POWER (S1)
 PRESS S5 5 TIMES TO ENTER MENU

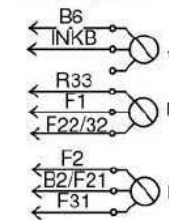


SERVICE MENU

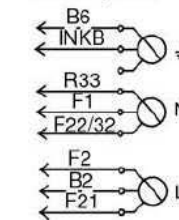
TURN OFF POWER (S1)
 WAIT FOR AT LEAST 5 SEC
 HOLD S4
 TURN ON POWER (S1)
 PRESS S4 5 TIMES TO ENTER SERVICE MENU

PRESS STOP (S5) TO CHANGE MENU STEP
 ROTATE DIAL TO CHANGE IN STEP
 PRESSING START (S4) STORES AND EXITS SERVICE MENU

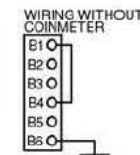
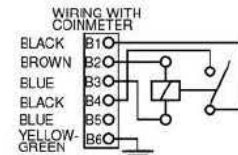
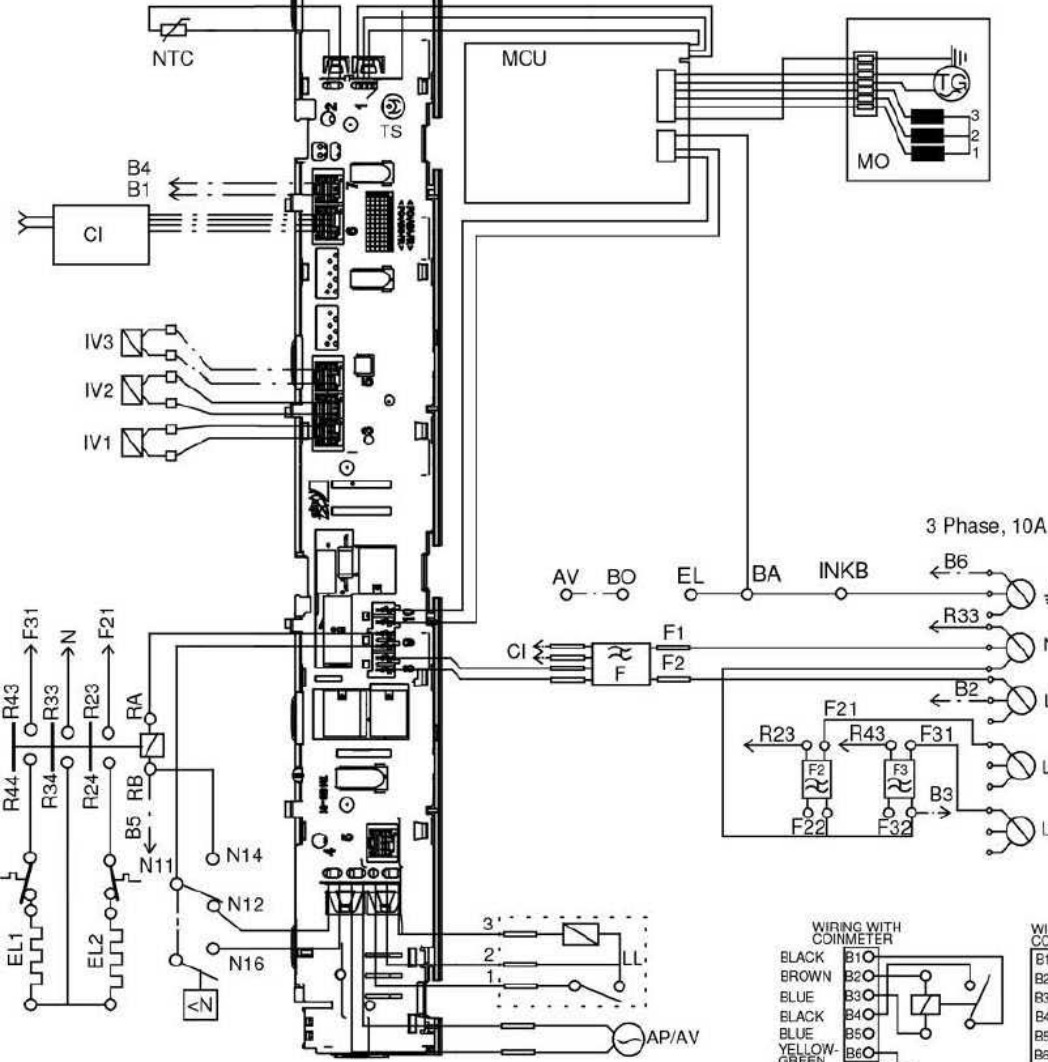
1 Phase, 16 A



1 Phase, 10 A



2010-05-20



CIRCUIT DIAGRAM WM70.C

467324 - 00