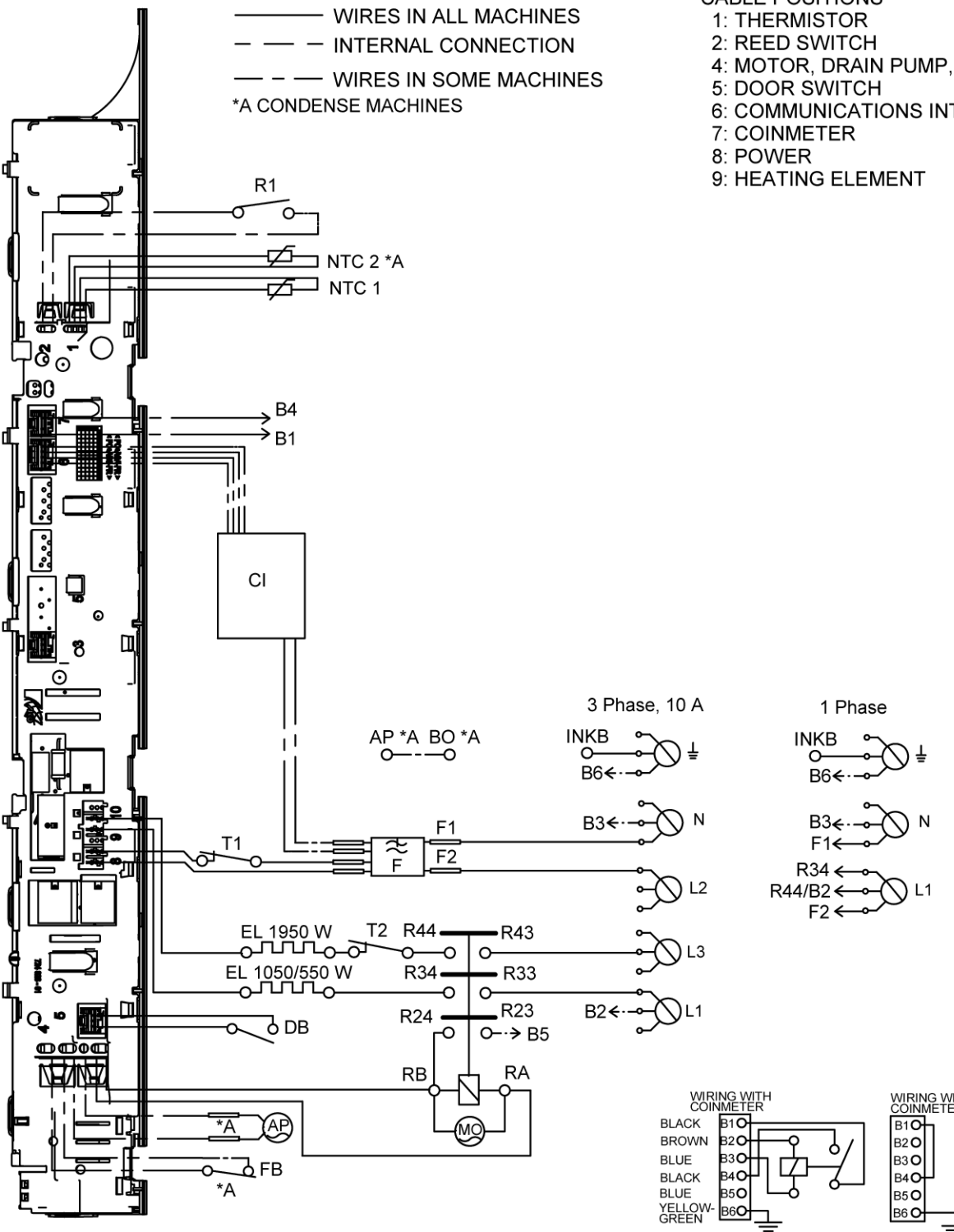


— WIRES IN ALL MACHINES
 - - - INTERNAL CONNECTION
 - - - WIRES IN SOME MACHINES
 *A CONDENSE MACHINES

CABLE POSITIONS
 1: THERMISTOR
 2: REED SWITCH
 4: MOTOR, DRAIN PUMP, FLOAT SWITCH
 5: DOOR SWITCH
 6: COMMUNICATIONS INTERFACE
 7: COINMETER
 8: POWER
 9: HEATING ELEMENT

RESISTANCES AT ROOM TEMPERATURE (CA. 20°C/68°F)
 VALUES WITH +/-10% ARE REGARDED AS NORMAL
 COMPONENT

F: RADIO INTERFERENCE SUPPRESSION FILTER 680K Ohm
 NTC 1: THERMISTOR 1 4 - 6 K Ohm
 NTC 2: THERMISTOR 2: 4 - 6 K Ohm
 AP: DRAIN PUMP: 111 Ohm
 EL: HEATING ELEMENT 550W 91.4 Ohm
 EL: HEATING ELEMENT 1050W 45.3 Ohm
 EL: HEATING ELEMENT 1950W 20.5 Ohm
 MO: MOTOR
 T1: THERMOSTAT, OVERHEATING (HEATER)
 T2: THERMOSTAT, OVERHEATING (HEATER)
 FB: FLOAT SWITCH
 DB: DOOR SWITCH
 R1: REED SWITCH
 CI: COMMUNICATIONS INTERFACE



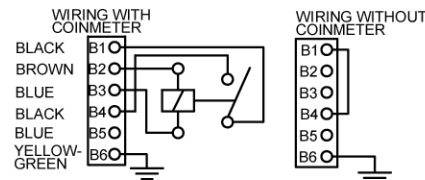
SERVICE MENU

TURN OFF POWER (S1)
 WAIT FOR AT LEAST 5 SEC
 HOLD S2
 TURN ON POWER (S1)
 PRESS S2 5 TIMES TO ENTER SERVICE MENU

PRESS STOP (S3) TO CHANGE MENU STEP
 ROTATE DIAL TO CHANGE IN STEP
 PRESSING START (S2) STORES AND EXITS SERVICE MENU

USER SETTINGS MENU

TURN OFF POWER (S1)
 WAIT FOR AT LEAST 5 SEC
 HOLD S3
 TURN ON POWER (S1)
 PRESS S3 5 TIMES TO ENTER MENU



P07AY30000001