

——— WIRES IN ALL MACHINES
 - - - WIRES IN SOME MACHINES
 - - - INTERNAL CONNECTION

CABLE POSITIONS
 1: MOTOR COMMUNICATION
 2: THERMISTOR
 3: INLET VALVES
 4: DOOR LOCK, DRAIN PUMP, PREASSURE SWITCH
 6: COMMUNICATION INTERFACE
 7: COIN COLLECTOR
 8: POWER
 9: HEATING ELEMENT, PREASSURE SWITCH
 10: MOTOR POWER

RESISTANCES AT ROOM TEMPERATURE (CA. 20°C/68°F)
 VALUES WITHIN +/-10% ARE REGARDED AS NORMAL COMPONENT

| | | |
|-------|---------------------------------------|-----------------|
| F: | RADIO INTERFERENCE SUPPRESSION FILTER | 680K Ohm |
| EL: | HEATING ELEMENT | 25 Ohm |
| AP: | DRAIN PUMP 50 Hz | 144 Ohm |
| AP: | DRAIN PUMP 60 Hz | 76 Ohm |
| AV: | DRAIN VALVE | 110/134 Ohm |
| LL: | DOOR LOCK, 1-2 | 122 Ohm |
| NTC: | THERMISTOR | 6.1 - 3.8 K Ohm |
| IV 1: | INLET VALVE 1 | 3.7 K Ohm |
| IV 2: | INLET VALVE 2 | 3.7 K Ohm |
| IV3: | INLET VLAVE 3 | 3.5 K Ohm |
| MO: | MOTOR, 1-3 | 4,3±7% Ohm |
| | 1-2 | 4,3±7% Ohm |
| | 2-3 | 4,3±7% Ohm |

MCU: MOTOR CONTROL UNIT

N: PRESSURE SWITCH
 TS: PRESSURE SENSOR
 TG: TACHO GENERATOR
 BA: CONTAINER
 INKB: INCOMING GROUND
 CI: COMMUNICATIONS INTERFACE

USER SETTINGS MENU

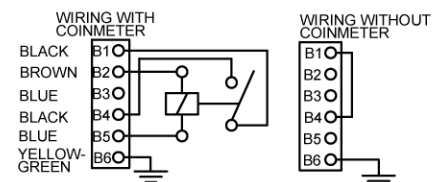
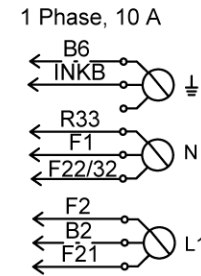
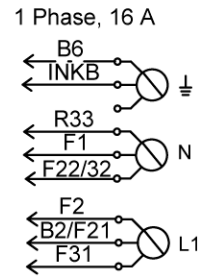
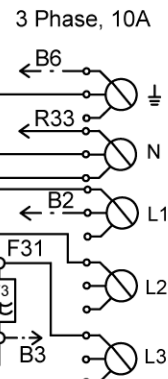
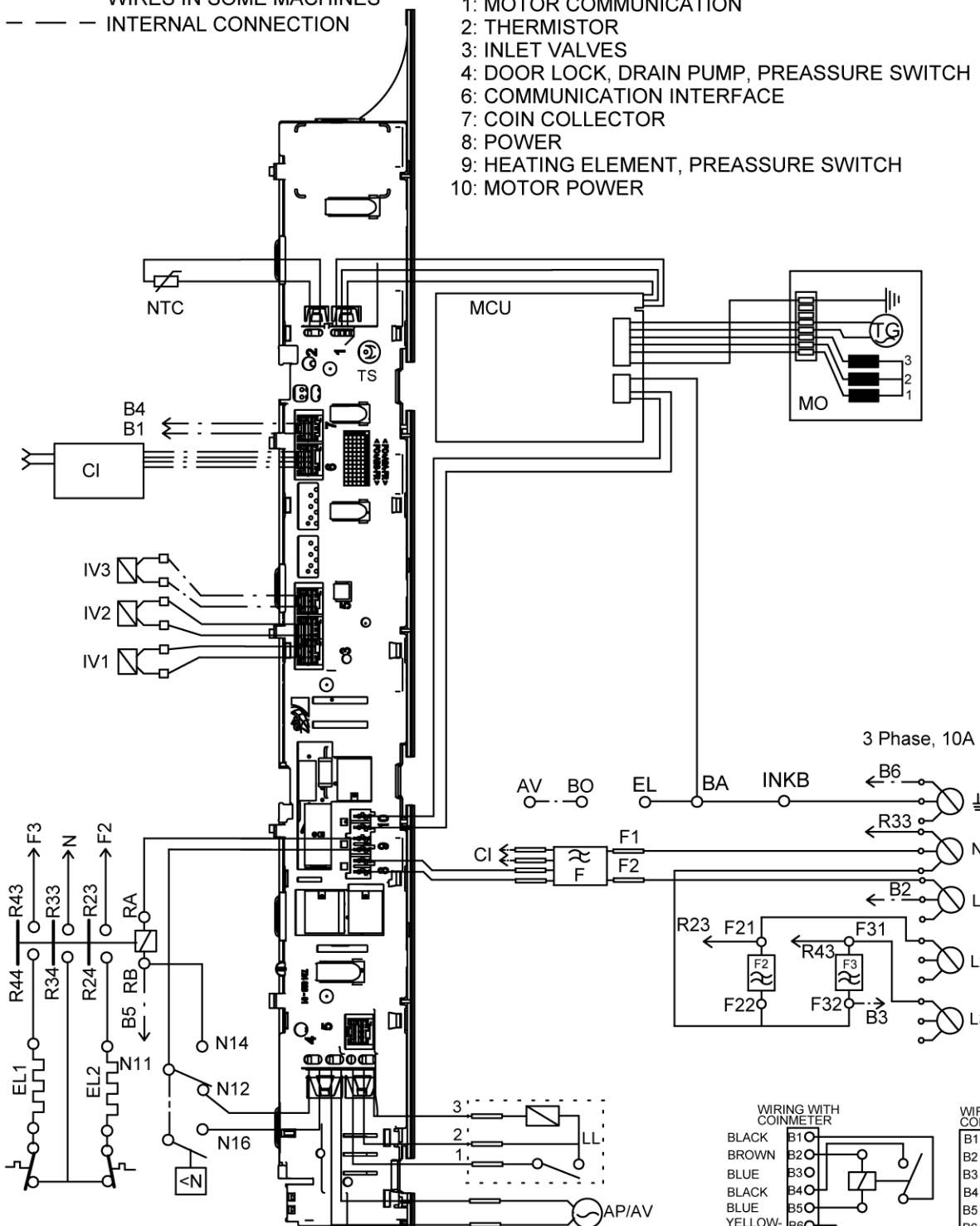
TURN OFF POWER (S1)
 WAIT FOR AT LEAST 5 SEC
 HOLD S5
 TURN ON POWER (S1)
 PRESS S5 5 TIMES TO ENTER MENU



SERVICE MENU

TURN OFF POWER (S1)
 WAIT FOR AT LEAST 5 SEC
 HOLD S4
 TURN ON POWER (S1)
 PRESS S4 5 TIMES TO ENTER SERVICE MENU

PRESS DOOR OPENING (S5) TO CHANGE MENU STEP
 ROTATE DIAL TO CHANGE IN STEP
 PRESSING START/STOP (S4) STORES AND EXITS SERVICE MENU



2009-12-17

P07AY30000000