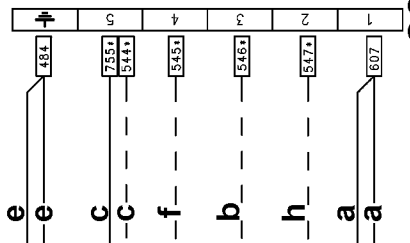


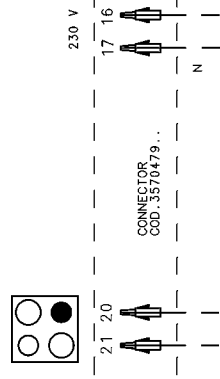
74

29



1 — 807
 2 — 547
 3 — 544
 4 — 545
 5 — 484

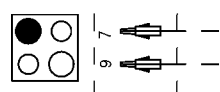
e — e
 c — c
 f — f
 b — b
 h — h
 a — a



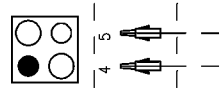
17 — 17
 16 — 16
 21 — 21
 20 — 20

230 V
 N

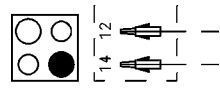
CONNECTOR
 COD. 3570479...



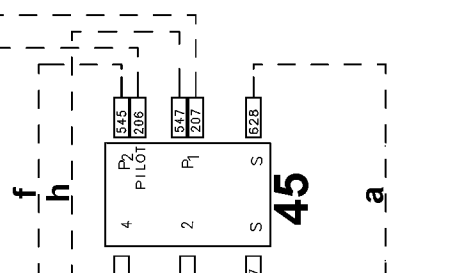
9 — 9
 7 — 7



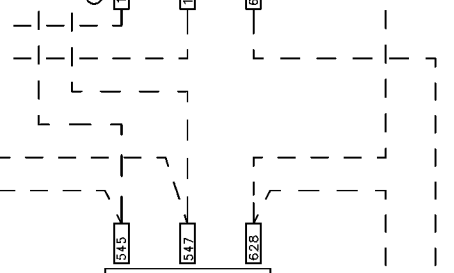
4 — 4
 5 — 5



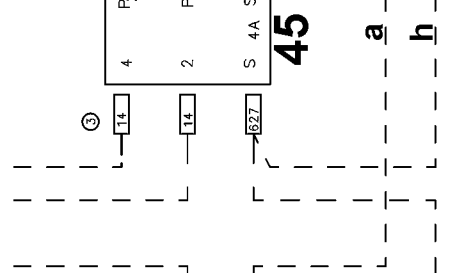
14 — 14
 12 — 12



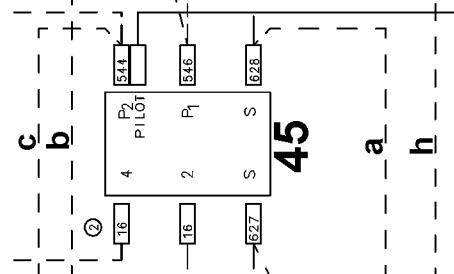
45
 P2
 P1
 S
 S



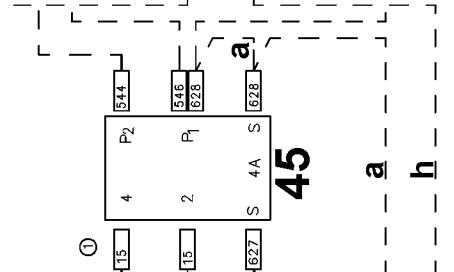
45
 P2
 P1
 S
 S



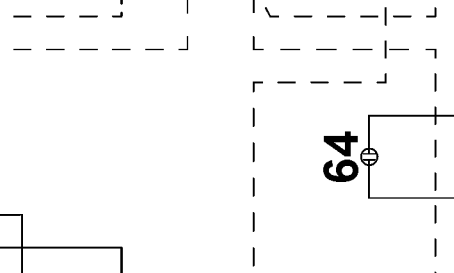
45
 P2
 P1
 S
 S



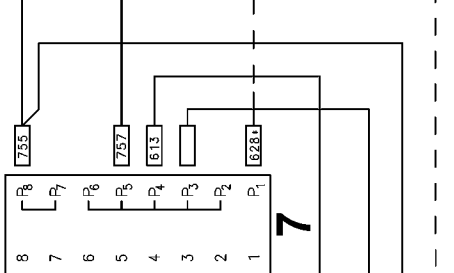
45
 P2
 P1
 S
 S



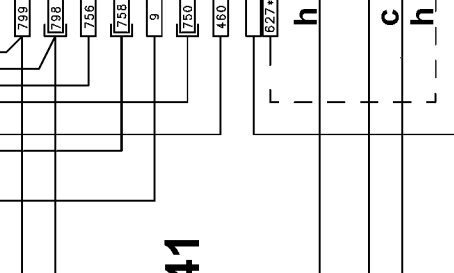
45
 P2
 P1
 S
 S



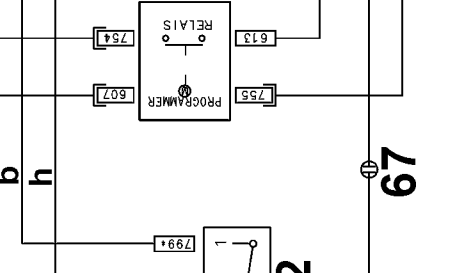
45
 P2
 P1
 S
 S



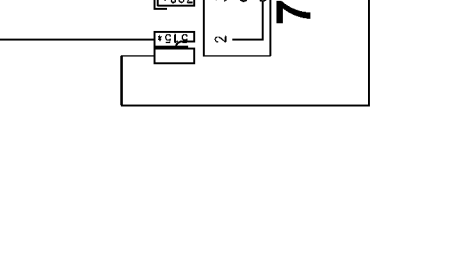
45
 P2
 P1
 S
 S



45
 P2
 P1
 S
 S



45
 P2
 P1
 S
 S



45
 P2
 P1
 S
 S

34



746 — 746
 755 — 755

a

52



1 — 1
 2 — 2
 1 — 1
 2 — 2

70



N.A. — N.A.
 607 — 607

20



25 W — 25 W
 764 — 764

53



460 — 460
 515 — 515

71



N.C. — N.C.
 607 — 607

57



750 — 750
 315 — 315

32



756 — 756
 798 — 798

41



RELAYS — RELAYS
 PROGRAMMER — PROGRAMMER

72



799 — 799
 798 — 798
 315 — 315

7



P8 — P8
 P7 — P7
 P6 — P6
 P5 — P5
 P4 — P4
 P3 — P3
 P2 — P2
 P1 — P1

64



63 — 63
 755 — 755

67



63 — 63
 755 — 755

357 770303b