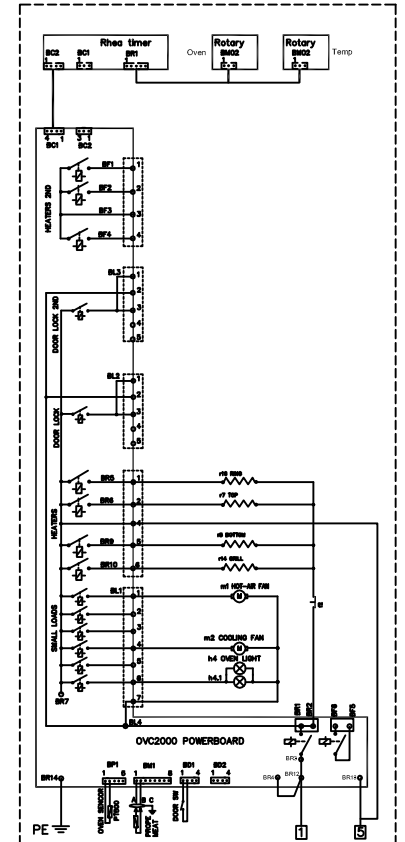
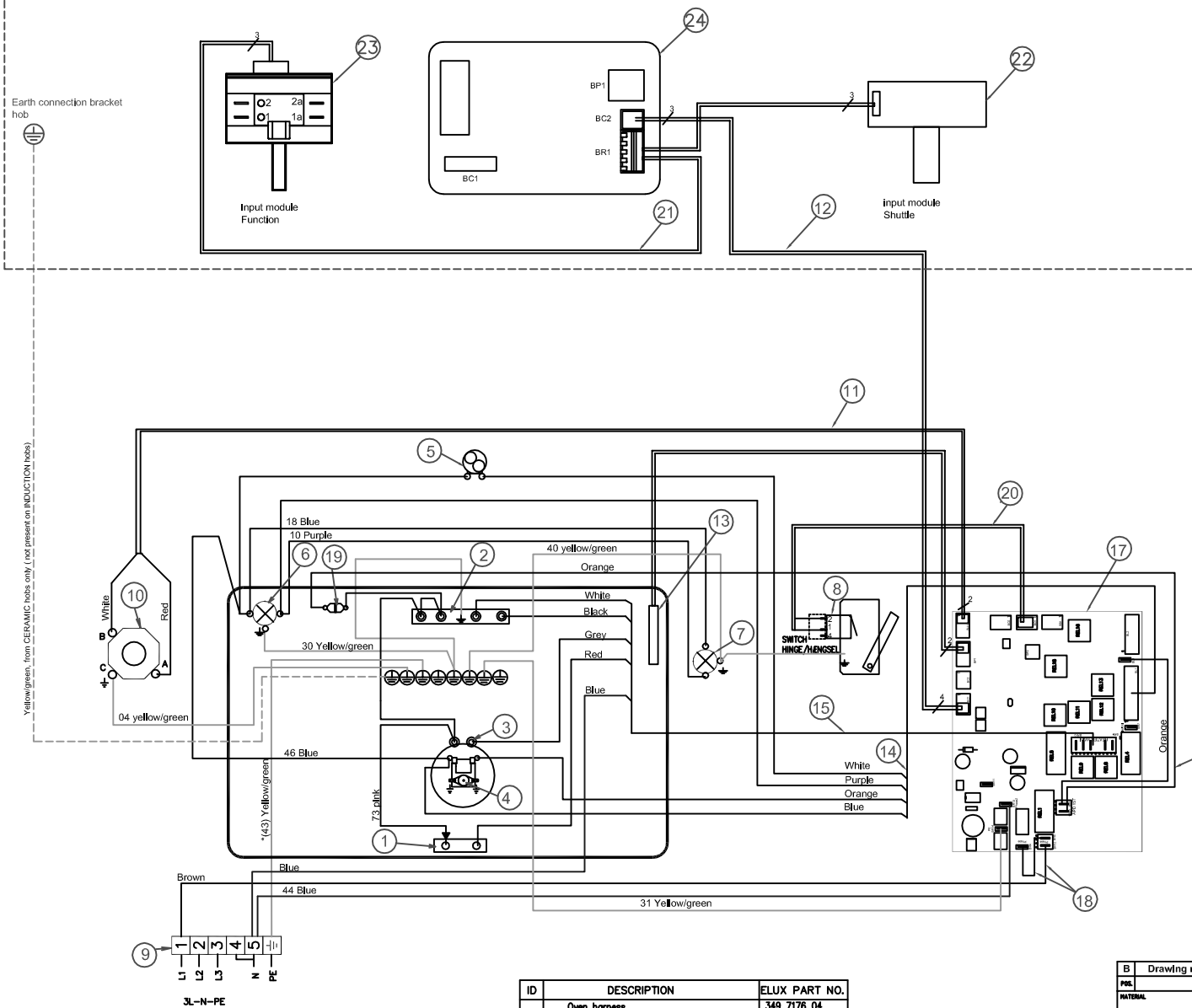


The drawing contains confidential information and it may not be copied, shared or handed to a third party or otherwise used and it is to be returned promptly to the design owner, who is responsible for the drawing.

Items shown in this drawing must not contain substances listed in Annex II of the RoHS Directive (Lead, Cadmium, Mercury, Hexavalent Chromium, PBB and PBDE), or substances classified as Restricted Hazardous List, according to the Electrolux Restricted Hazardous List.

See hob diagram



Pos	No	Components
27		
26		
25		
24	1	RHEA timer
23	1	Input module selector
22	1	Input module shuttle
21	1	Wire set Input module timer
20	1	Wire set Light switch
19	1	Heat protector
18	1	Wire set APD IN
17	1	OVC 2000 power board
16	1	Wire set APD OUT
15	1	Wire set heater
14	1	Wire set small loads
13	1	Oven PT500 sensor
12	1	Wire set MACS OVC 2000 - display
11	1	Wire set meat probe
10	1	Jack socket meat probe
9	1	Main terminal
8	1	Microswitch fan / light
7	1	Oven lamp back slide
6	1	Oven lamp slide
5	1	Cooling fan
4	1	Fan motor hot air
3	1	Heating element hot air 230V 2400W
2	1	Heating element top 230V 1000/1500W
1	1	Heating element lower 230V 1000W

ID	DESCRIPTION	ELUX PART NO.
	Oven harness	349 7176 04
	Main terminal harness	see hob diagram
	List of single wires CERAMIC Hobs only	349 7215 02
	List of single wires INDUCTION Hobs only	349 7220 02
	Component list	330 2222
	INSULATION HOUSING	

349 7151-02	VARIANT NUMBER	REPLACED NUMBER	POS.	MODEL	DESIGN USERS	CHANGES FROM THE BASE NUMBER

B Drawing released for production		hh	2006-11-28
MATERIAL		SCALE	DATE
TREATMENT		DESIGN USERS	REPLACES
DESIGN OWNER		DATE	DESIGNED FROM
DKK		DATE	SUPPLY SPECIFICATIONS
Electrolux		TITLE M2 Rhea, Hot air oven	
349 7151 02		REV	B
SHEET		1	