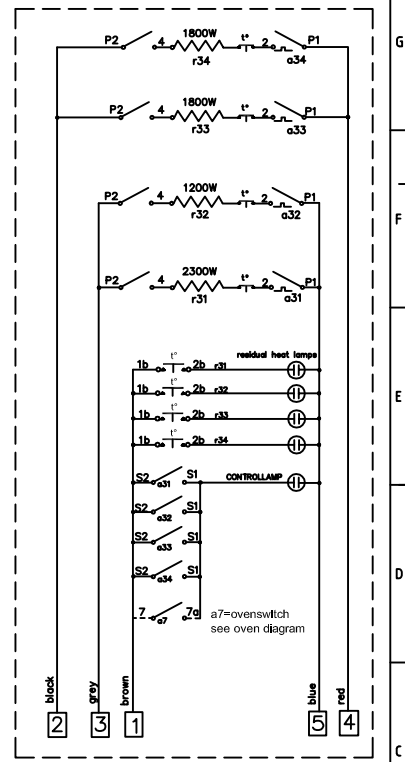
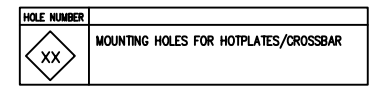
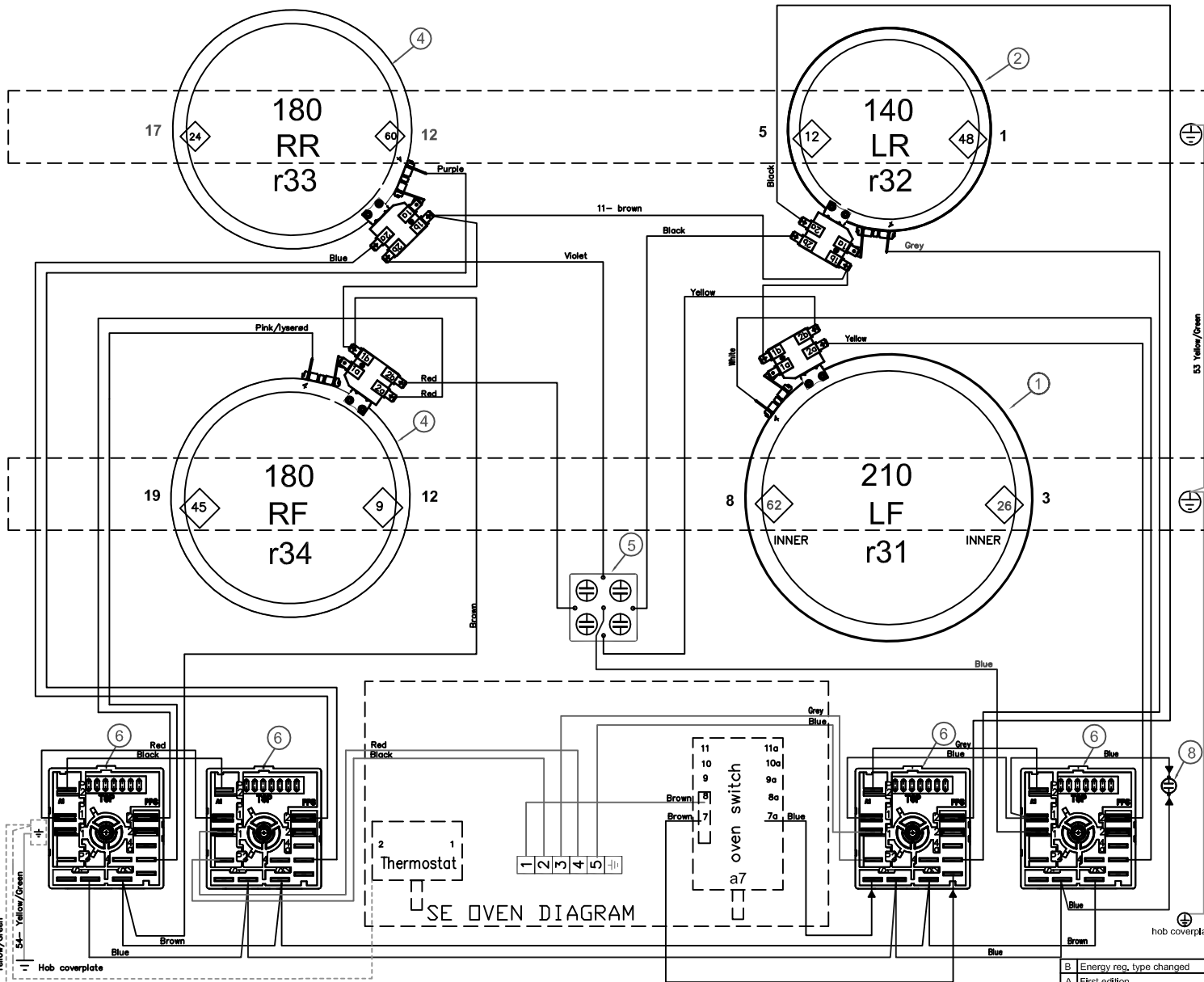


This drawing contains confidential information and its disclosure to unauthorized persons is prohibited. It may not be copied, reprinted, or handed to a third party without the express written consent of Electrolux or otherwise used and it is to be returned promptly to the design owner, who is responsible for the drawing.

Items shown in this drawing must not contain substances listed in Annex II of the RoHS Directive (Lead, Cadmium, Mercury, Hexavalent Chromium, PBB and PBDE), or substances classified as Restricted Hazardous List, according to the Electrolux Restricted Hazardous List.



POS	DESCRIPTION	QUANTITY
9	-	
8	1	Indicating lamp cooker
7	1	Energy regulator single zone
6	4	Heat indicator
5	1	Heat indicator
4	2	Radiant heater 180 1800W
3	1	Radiant heater 140 1200W
2	1	Radiant heater 210 2300W

COMPONENT LIST			
B	Energy reg. type changed	hh	2006-05-15
A	First edition	hh	

ID	DESCRIPTION	ELUX PART NO.
	Hob harness	349 5100 04
	List of single wires	349 7163 01
	Component list	330 2222
	INSULATION HOUSING	

FRONT SEEN FROM BOTTOM

DESIGN OWNER	DDN HH	DD	3D ONLY	X
DATE	2005-07-12	APP	CONCEPT 3D	EXACT 3D
TITLE		Wiring hob assembly		
NUMBER		349 7118 01		REV B
SHEET		1		

349 7118-01	VARIANT NUMBER	REPLACED NUMBER	POS.	MODEL	DESIGN USERS	CHANGES FROM THE BASE NUMBER