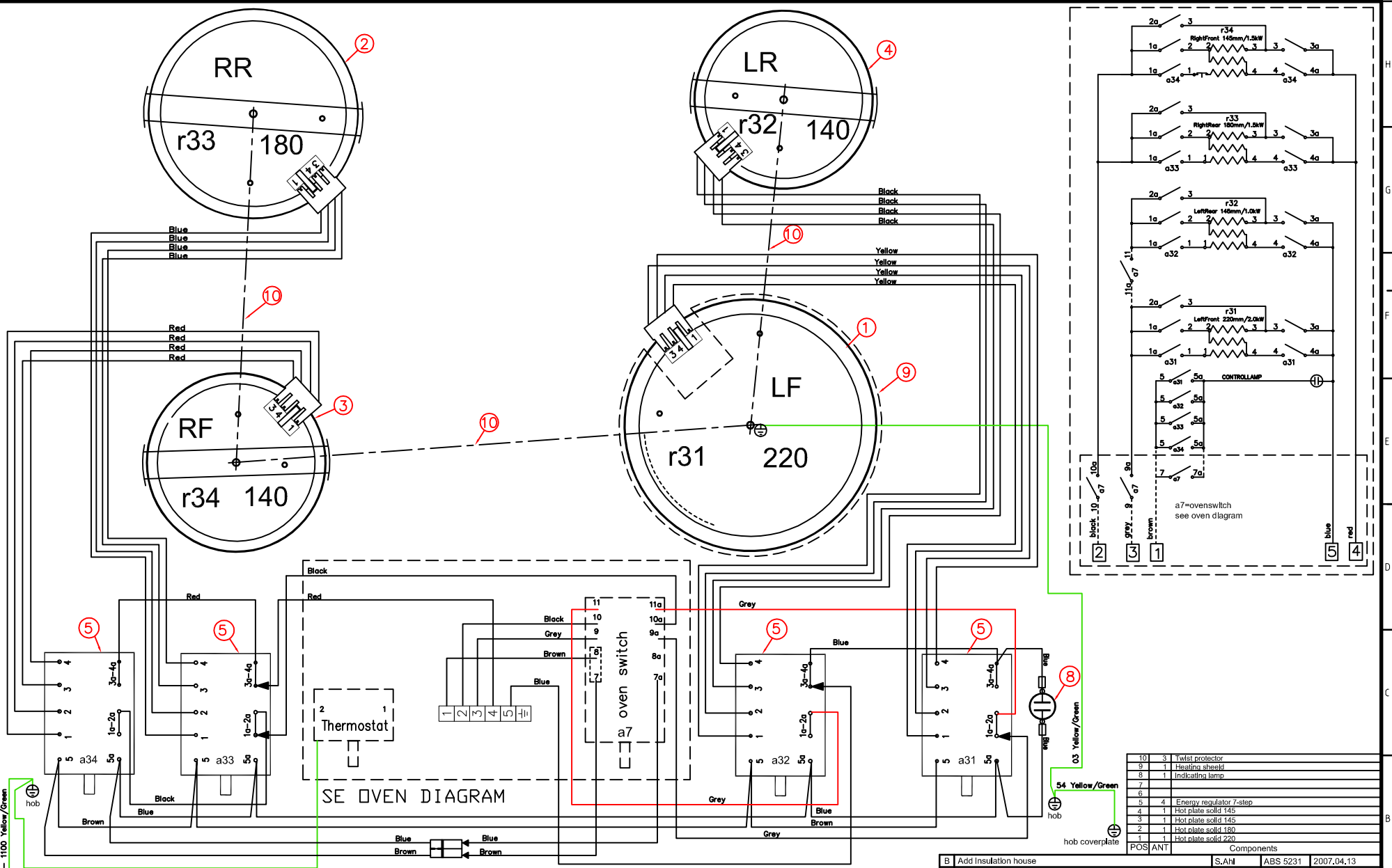


This drawing contains confidential information and is the property of Electrolux, without whose permission it shall not be reproduced, stored in a retrieval system or otherwise used and it is to be returned to the design owner upon request to the design owner, who is responsible for the drawing.

Items shown in this drawing must not contain substances that are banned according to Directive 2002/95/EC, the RoHS Directive. The design owner, who is responsible for the drawing, shall ensure that the design owner is informed of any substances that are restricted according to the Electrolux Restricted Materials List.



ID	DESCRIPTION	ELUX PART NO.
	Hob wiring cpl.	349 4709
	INSULATION HOUSING	
	LIST OF CRIMP CONTACTS	330 1766
	Component list	330 2222

HS60:1, HS70:1 **230V PM**
FRONT SEEN FROM BOTTOM

VARIANT NUMBER	REPLACED NUMBER	POS.	MODEL	DESIGN USERS	CHANGES FROM THE BASE NUMBER
349 5574-01					

POS	ANT	Components
10	3	Twist protector
9	1	Heating shield
8	1	Indicating lamp
7		
6		
5	4	Energy regulator 7-step
4	1	Hot plate solid 145
3	1	Hot plate solid 145
2	1	Hot plate solid 180
1	1	Hot plate solid 220

B	Add insulation house	S,AhI	ABS 5231	2007-04-13
A	First edition	S,AhI	ABS 4881	2007-02-06
POS	MODIFICATIONS	SIGNATURE	REQUEST	DATE
MATERIAL	WEIGHT	DESIGN USERS	REPLACES	EUROPEAN METHOD
TREATMENT		DERIVED FROM		
DESIGN OWNER	DATE	APPV	S,AhI	TITLE
DRK hh	2005-01-19			Wiring hob assembly
				349 5574
				REV B
				SHEET