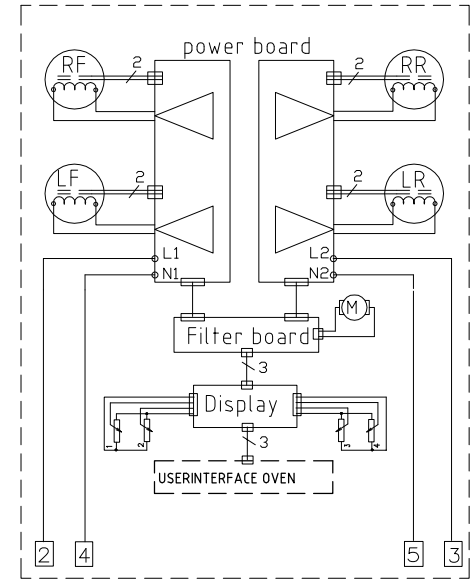
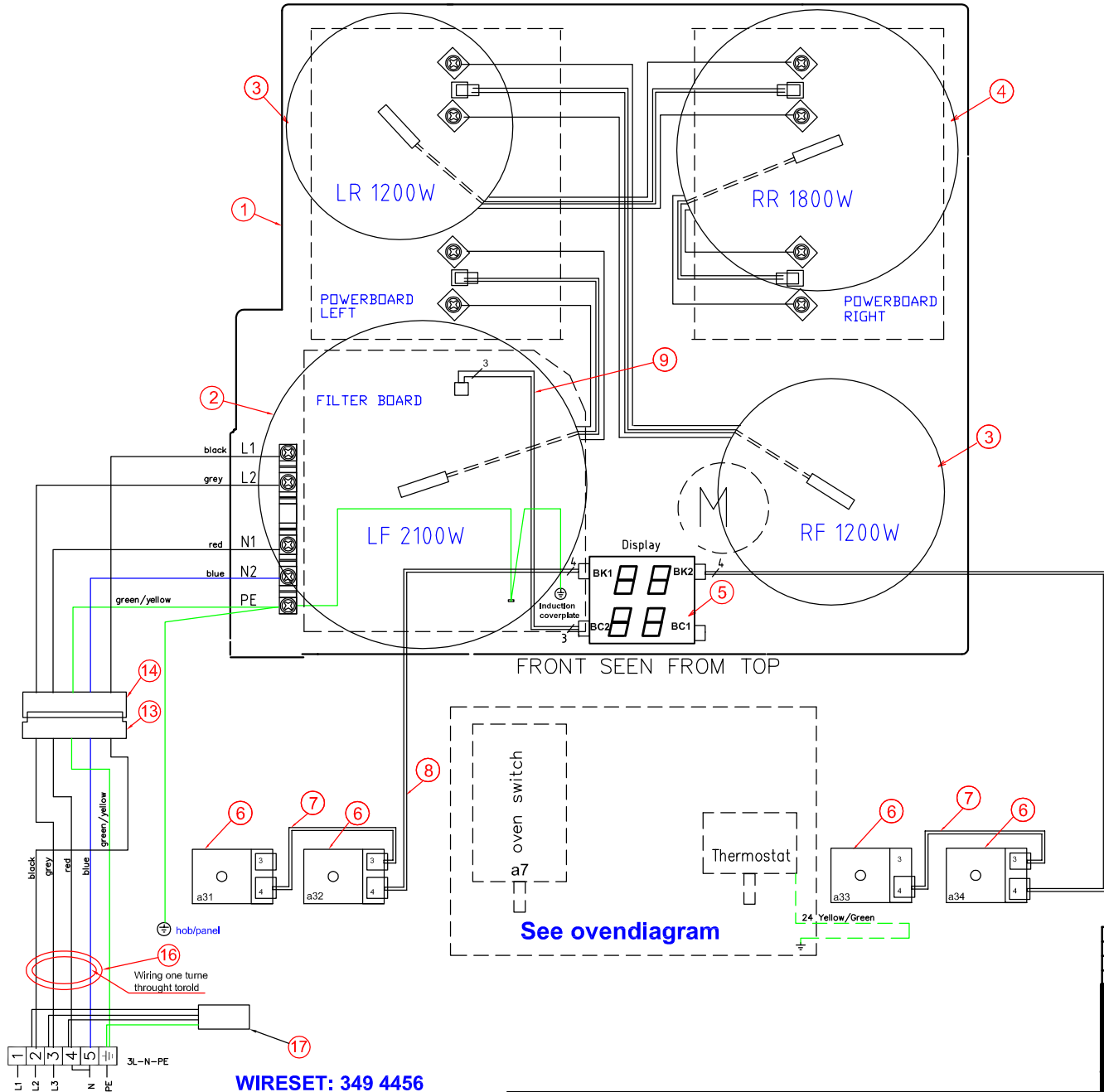


This drawing contains confidential information and may not be copied, shown or handed to a third party without the prior written consent of the design owner. The design owner, who is responsible for the drawing.

Items shown in this drawing which are not subject to the RoHS Directive (Lead, Cadmium, Mercury, Hexavalent Chromium, PBB and PBDE), or substances classified as Restricted Materials List.

GENERAL TOLERANCES  
ANGLES  
LENGTHS AND DIMETERS



17	1	EMC Filter
16	1	Toroid
15		
14	1	Wiring harness 349 4459 01
13	1	Wiring harness 349 4460 01
10	1	WIRESET OVEN DISPLAY/ HOR DISPLAY 3 PIN MACS
9	1	WIRESET FOR INDUCTION/DISPLAY 4 PIN MACS
8	2	WIRESET FOR ROTARY INPUT 4 PIN
7	2	WIRESET FOR ROTARY INPUT 3PIN/4PIN
6	4	INPUT MODULE
5	1	INDUCTION DISPLAY SQUARE
4	1	INDUCTION COIL 1800W
3	2	INDUCTION COIL 1200W
2	1	INDUCTION COIL 2100W
1	1	INDUCTION MODULE ELECTRONICS CPL., EXCL. COILS
POS		COMPONENT LIST

A First edition		S.A.H	ABS 3100	2006.04.01
MATERIAL	MODIFICATIONS	SIGNATURE	REQUEST	DATE
TREATMENT	WEIGHT	DESIGN USERS	REPLACES	EUROPEAN METHOD
DESIGN OWNER	DATE	APP	SUPPLY SPECIFICATIONS	
ORN S.A.H	2006-04-01	S.A.H		
Electrolux		Wiring hob assembly Induction		
349 5187		349 5187		

349 5187-01									
VARIANT NUMBER	REPLACED NUMBER	POS.	MODEL	DESIGN USERS	CHANGES FROM THE BASE NUMBER				