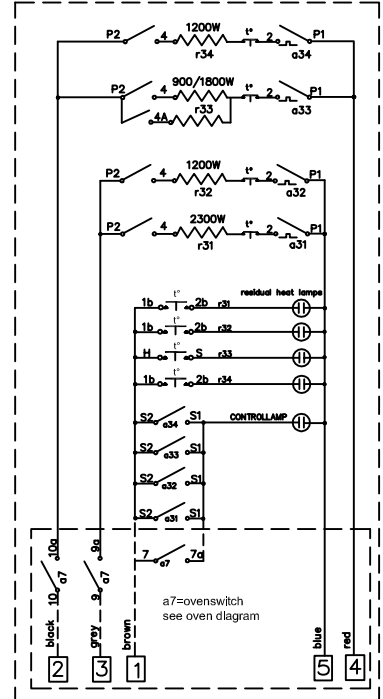
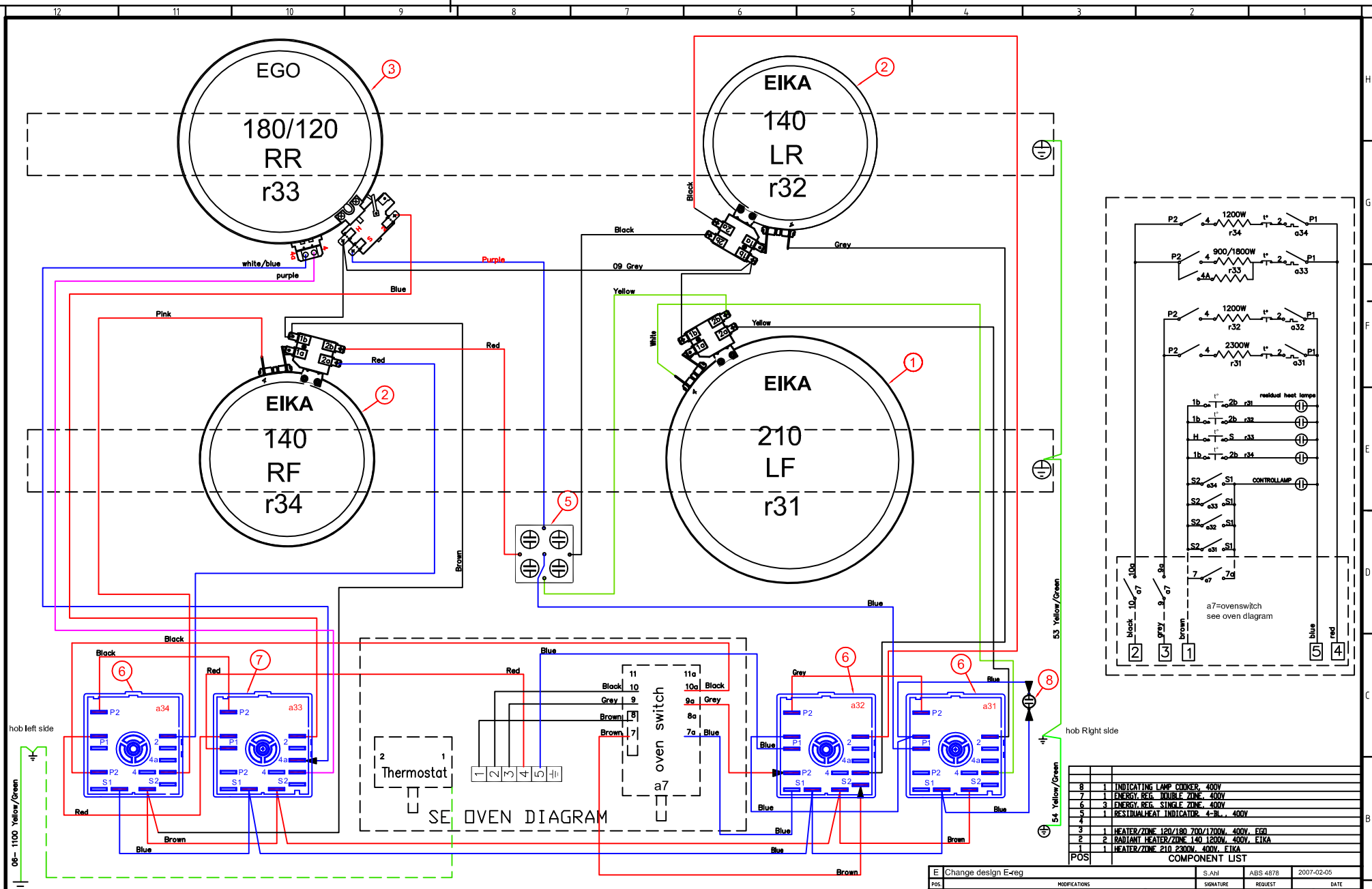


This drawing contains confidential information and is the property of Electrolux, without whose permission it is not to be reproduced, stored in a retrieval system or otherwise used and it is to be returned upon request to the design owner, who is responsible for the drawing.

Items shown in this drawing must not contain substances that are banned according to Directive 2002/95/EC, the RoHS Directive (Restriction of Hazardous Substances) or Directive 2006/66/EC, the Battery Directive (Restriction of Hazardous Substances) or "Restrictive" according to the Electrolux Restricted Materials List.



POS	QTY	DESCRIPTION
8	1	INDICATING LAMP COOKER, 400V
7	1	ENERGY REG. DOUBLE ZONE, 400V
6	3	ENERGY REG. SINGLE ZONE, 400V
5	1	RESTRAINED HEAT INDICATOR 4-FL., 400V
4	1	HEATER/ZONE 120/180 700/1700V, 400V, EGO
3	2	RADIANT HEATER/ZONE 140 1200V, 400V, EIKA
1	1	HEATER/ZONE 210 2300V, 400V, EIKA

ID	DESCRIPTION	ELUX PART NO.
	Hob wiring cpl.	349 5112 05
	INSULATION HOUSING	330 4175
	LIST OF CRIMP CONTACTS	330 1766
	Component list	330 2222

FRONT SEEN FROM BOTTOM
HC60:6/HC70:6, 400V, flins

VARIANT NUMBER	REPLACED NUMBER	POS	MODEL	DESIGN USERS	CHANGES FROM THE BASE MODEL
349 5144-01					

E Change design E-reg

MODIFICATIONS: S.A.H. ABS 4878 2007-02-05

SIGNATURE: S.A.H. REQUEST: ABS 4878 DATE: 2007-02-05

SCALE: 1:1

DESIGN USERS: S.A.H. REPLACES: S.A.H. DERIVED FROM: S.A.H.

DESIGN OWNER: S.A.H. DATE: 2006-03-22

TITLE: **Wirina hob assembly**

Electrolux

NUMBER: **349 5144**

REVISION: E SHEET: 1