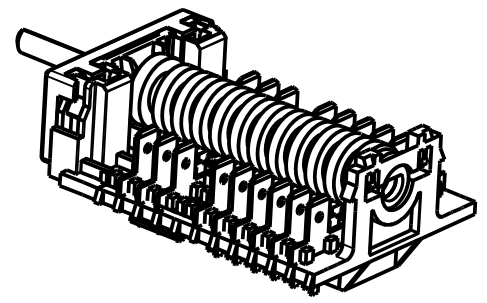
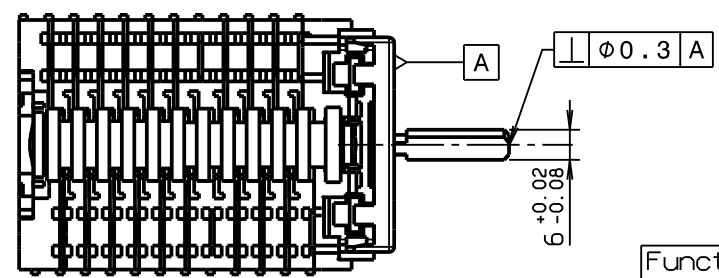
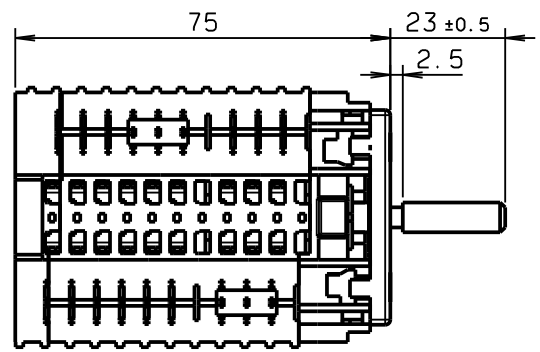
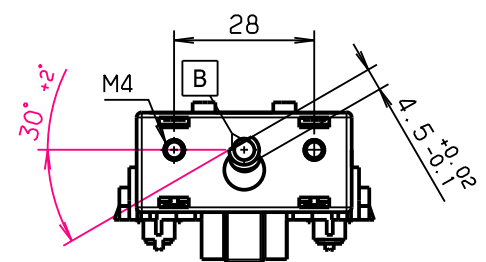
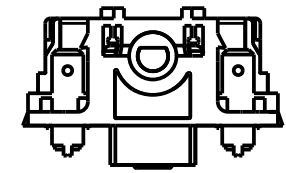


This drawing contains confidential information and is the property of Electrolux. Without whose permission it may not be copied, shown or handed to a third party or otherwise used and it is to be returned promptly upon request to the design owner, who is responsible for the drawing.

Items shown in this drawing must not contain substances that are banned according to Directive, 2002/95/EC, the RoHS Directive (Lead, Cadmium, Mercury, hexavalent Chromium, PBB and PBDE), or substances classified as "Banned" or "Restricted", according to the Electrolux Restricted Materials List.



T-marked: T150
 Current/Voltage: 16(6)A/250V
 10(2)A/400V
 Operating torque: Min 20Ncm
 Max 45Ncm
 Type designation: 11HE/146



Shaft in 0-position
 Angle deviation Max ±2° for plane B
 in relation to ϕ for 2 hole M4

NOTE:
 (C) Detent spring Fe 621

Function	1a	2a	3a	4a	5a	6a	7a	8a	9a	10a	11a	Angle
	Connected to each other											
0 off	0	0	0	0	0	0	0	0	0	0	0	0
1 off	0	0	0	0	0	0	0	X	X	X	X	30°
2 Top & Bottom	0	X	0	X	0	X	X	X	X	X	X	85°
3 Browning	0	0	X	X	0	X	X	X	X	X	0	140°
4 Max Grill	0	X	X	0	0	X	X	X	X	X	0	195°
5 Bottom	0	0	0	X	0	X	X	X	X	X	X	250°
6 Oven Light	0	0	0	0	0	X	X	X	X	X	X	305°
	1	2	3	4	5	6	7	8	9	10	11	

C Insert NOTE: Detent spring Fe 621				IAN	ABS 5223	2007-04-11
POS. MODIFICATIONS				SIGNATURE	REQUEST	DATE
MATERIAL			MODEL	SCALE		EUROPEAN METHOD
-			3D	1:1		
TREATMENT			DESIGN USERS		REPLACES	
-			ABS, DKK		-	
WEIGHT			DERIVED FROM		-	
-			-		-	
DESIGN OWNER		DRN	IAN	CHD	2D ONLY	
-		-	-	-	-	
DATE		2006-02-16	APPR	-	CONCEPT 3D	
-		-	-	-	-	
EXACT 3D		X		SUPPLY SPECIFICATIONS		
-		-		-		
TITLE Oven switch						
6 pos						
NUMBER						
349 5134						
REV						C
SHEET						



349 5134-01	-	-	-	-	-
VARIANT NUMBER	REPLACED NUMBER	POS.	MODEL	DESIGN USERS	CHANGES FROM THE BASE NUMBER