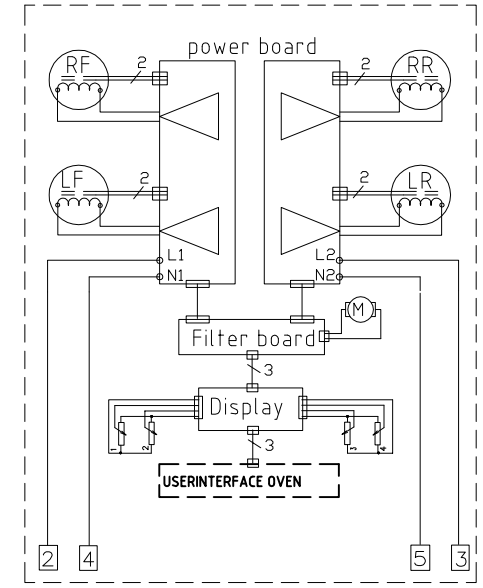
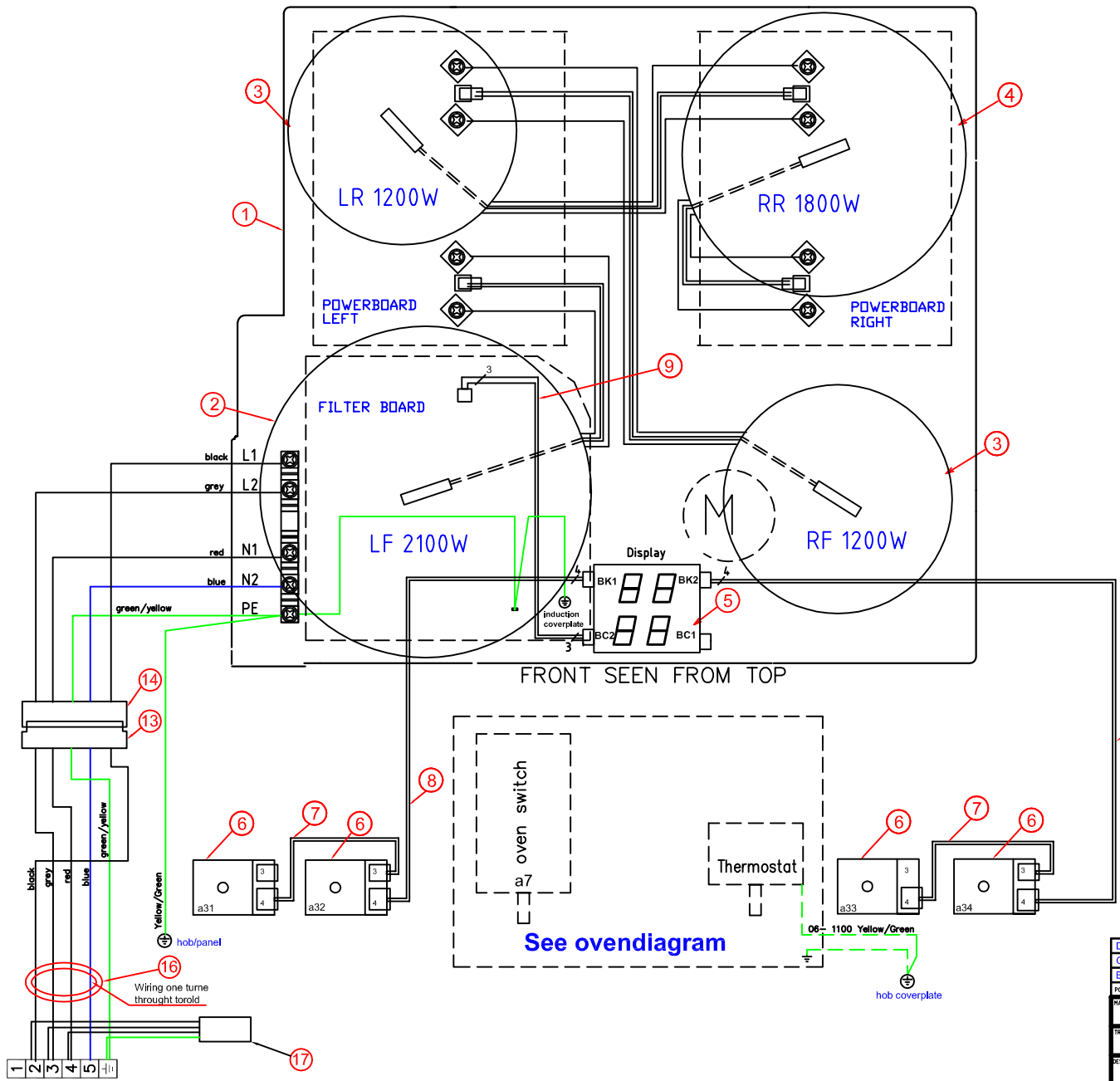


This drawing contains confidential information and is the property of Electrolux. Without whose permission it shall not be reproduced, stored in a retrieval system or otherwise used and it is to be returned upon request to the design owner, who is responsible for the drawing.

Items shown in this drawing must not contain substances that are banned according to Directive 2002/95/EC, the RoHS Directive. Cadmium, Mercury, Hexavalent Chromium, PBBs and PBDEs, Polychlorinated Biphenyls or "Restrictive" according to the Electrolux Restricted Materials List.



POS	QTY	DESCRIPTION
17	1	EMC Filter
16	1	Toroid
15		
14	1	Wiring harness 349 4459 01
13	1	Wiring harness 349 4460 01
10	1	WIRESET OVEN DISPLAY / HOB DISPLAY 3 PIN MACS
9	1	WIRESET FOR INDUCTION/DISPLAY 3 PIN MACS
8	2	WIRESET FOR ROTARY INPUT 4 PIN
7	2	WIRESET FOR ROTARY INPUT 3PIN/4PIN
6	4	INPUT MODULE
5	1	INDUCTION DISPLAY SQUARE
4	1	INDUCTION COIL 1800W
3	2	INDUCTION COIL 1200W
2	1	INDUCTION COIL 2100W
1	1	INDUCTION MODULE ELECTRONICS OPL., EXCL. COILS

COMPONENT LIST	REVISION	DATE
D Removed text	S.A.H	ABS 4467 2006.12.04
C Earth connection updated	S.A.H	ABS 3063 2006.03.25
B Add filter and toroid	S.A.H	ABS 1138 2005.07.18

DESIGN OWNER		DATE		TITLE	
DDN: HH	OP: S.A.H	DATE: 2005-01-14	APP: S.A.H	Wiring hob assembly Induction	
				349 4575	

349 4575-01					
VARIANT NUMBER	REPLACED NUMBER	POS.	MODEL	DESIGN USERS	CHANGES FROM THE BASE NUMBER