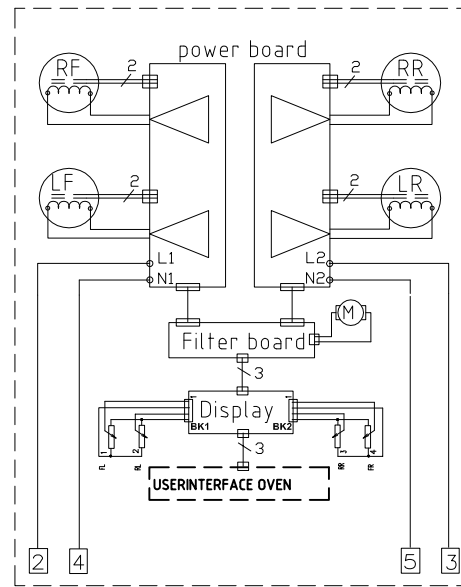
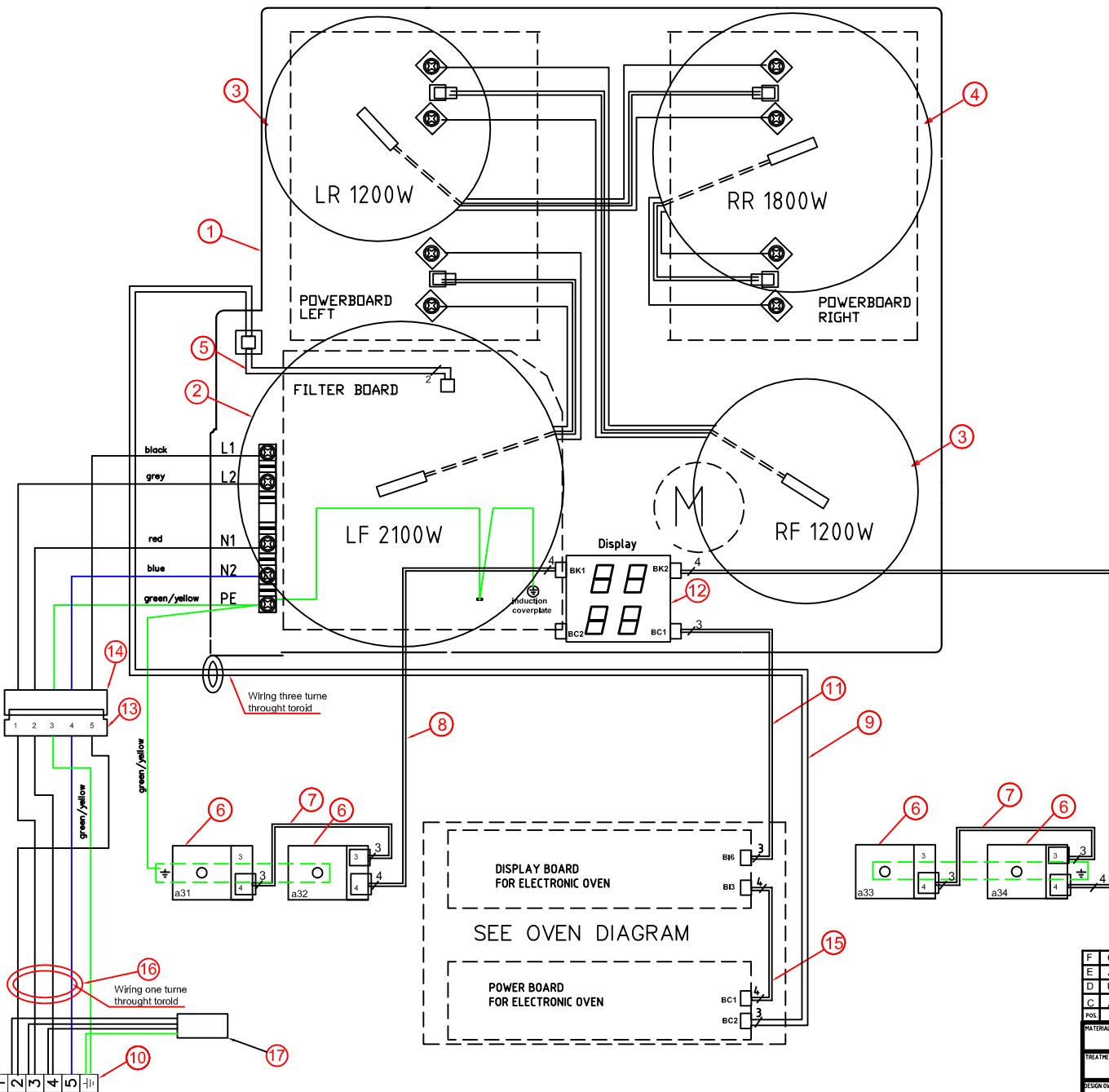


This drawing contains confidential information and is the property of Electrolux, without whose permission it shall not be reproduced, stored in a retrieval system or otherwise used and it is to be returned immediately upon request to the design owner, who is responsible for the drawing.

Items shown in this drawing must not contain substances that are banned according to Directive 2002/95/EC, the RoHS Directive, and Directive 2002/61/EC, the Ecodesign Directive. The design owner shall ensure that the design owner is informed of the presence of "Banned" or "Restricted" substances according to the Electrolux Restricted Materials List.



1 WIRESET FOR INDUCTION/DISPLAY 3 PIN MACS

POS	QUANTITY	DESCRIPTION
17	1	EMC filter
16	2	Toroid
15	1	Wire set for OVC2000_Avantgard/perfect2
14	1	Wiring harness 349 4460 01
13	1	Wiring harness 349 4460 01
12	1	7-segment display
11	1	Wire set user Interface-Square display
10	1	Main terminal
9	1	Wire set for OVC2000-Induction
8	2	WIRE SET FOR ROTARY INPUT
7	2	WIRE SET FOR ROTARY INPUT
6	4	INPUT MODULE 4 PIN
5	1	Wire set Internal connection
4	1	INDUCTION COIL 1800W
3	2	INDUCTION COIL 1200W
2	1	INDUCTION COIL 2100W
1	1	INDUCTION MODULE ELECTRONICS CPL., EXCL. COILS

POS	DESCRIPTION	MODIFICATIONS	SIGNATURE	REQUEST	DATE
F	Correction of text		S.Ahl	ABS 4467	2006-12-04
E	Add filter and toroid		S.Ahl	ABS 1138	2005.07-18
D	Update, add earth wiring		hh	ABS 453	2004.01-21
C	Add pos 15		S.Ahl	ABS 301	2004.12.17

MATERIAL		MODEL		SCALE	
TREATMENT		DESIGN USERS		REPLACES	
DESIGN OWNER		DRAWN		DERIVED FROM	
DATE		APPR		SUPPLY SPECIFICATIONS	
				<b>349 4261</b>	

VARIANT NUMBER	REPLACED NUMBER	POS	MODEL	DESIGN USERS	CHANGES FROM THE BASE NUMBER
349 4261-01					