

This drawing contains confidential information and is the property of ELECTROLUX HOME PRODUCTS. FREDERBGA A/S or handed to a third party or otherwise used, and it is the responsibility of the recipient to ensure that ELECTROLUX HOME PRODUCTS FREDERBGA A/S is responsible for the drawing.

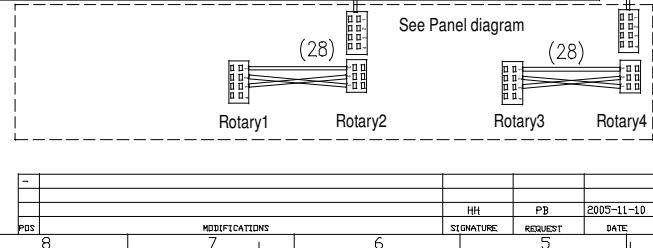
Items shown in this drawing must not contain substances that are banned according to Directive 2002/95/EC (the Restriction of Hazardous Substances Directive) or Directive 2006/66/EC (the Battery Directive). The manufacturer is not responsible for substances classified as "banned" or "restricted" according to the Electrolux Restricted Materials List.

Critical dimensions which must be under control (if any) are indicated by a dashed line. Visible surfaces. Draft angles (not shown).

GENERAL TOLERANCES ANGLES: THEORETICAL FLAT AREA: DEVELOPED FLAT AREA: LENGTHS AND DIAMETERS

TYPE:	CAL400
MODEL	PRODUCT NO.
ELK8200-cl	948 203 034
ELK9200-cl	948 203 035

SEE DRAWING: 325 805551  
FOR REF: 8,9,28  
AND: 51,52,53,54,55



12	2	FLEX F. TÆNDELEKTRODE / MIDSTÅND
11	1	PLASTIC carrier HIC, MONTERINGS- BOKS HIC2000
10	1	WIRESSET HIC2000, CPL, INCL. SINGLE WIRES
7	1	DISPLAY HUD Squares, for HIC2000, Røds
6	1	POWERBOARD HIC2000, 230V, Røds
5	1	TERMOSTAT (KØLEMITTOR) 65 C
4	1	RADIANT HEATER/ZINE MAGMA Røds 14 1200W 230V
3	1	RADIANT HEATER/ZINE MAGMA Røds 18 1800W 230V
2	1	HEATER/ZINE MAGMA Røds 12/18 700/1700W 230V
1	1	HEATER/ZINE MAGMA Røds 14/21 1000/2200W 230V

MATERIAL	SCALE	1:1
TREATMENT	WEIGHT	
DESIGN OWNER	DRN	HH
CHK	PB	
DATE	2005-11-10	
APPR.		
HOME PRODUCTS DENMARK		

DESIGN USERS	REPLACES	
	NO	
	DERIVED FROM	
	NO	
	SUPPLY SPECIFICATIONS	
TITLE	TOPPLATE OVERPLADE	
NUMBER	325 90 54 48	REV A

HH	PB	2005-11-10
SIGNATURE	REQUEST	DATE
MODIFICATIONS		
8	7	6