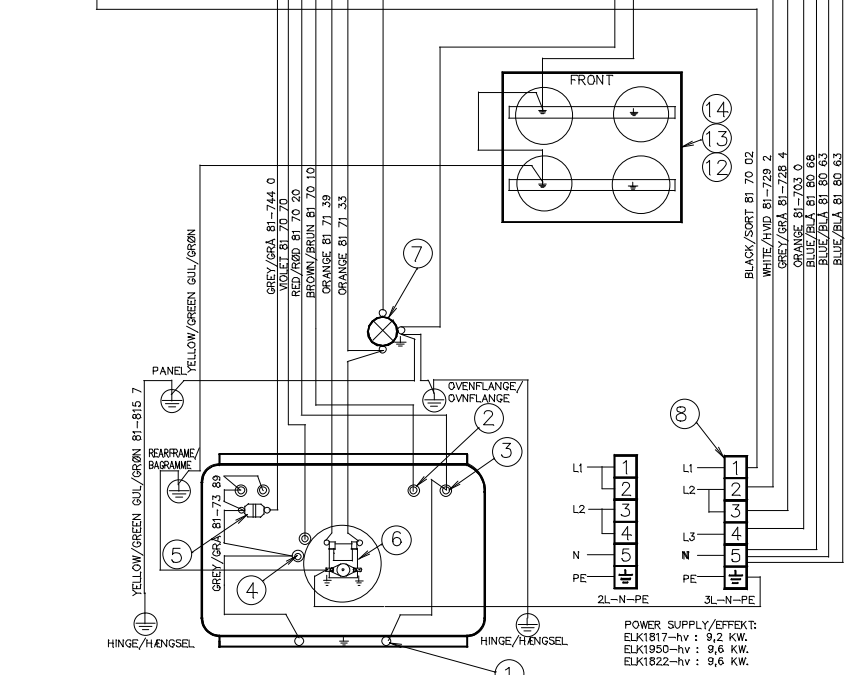
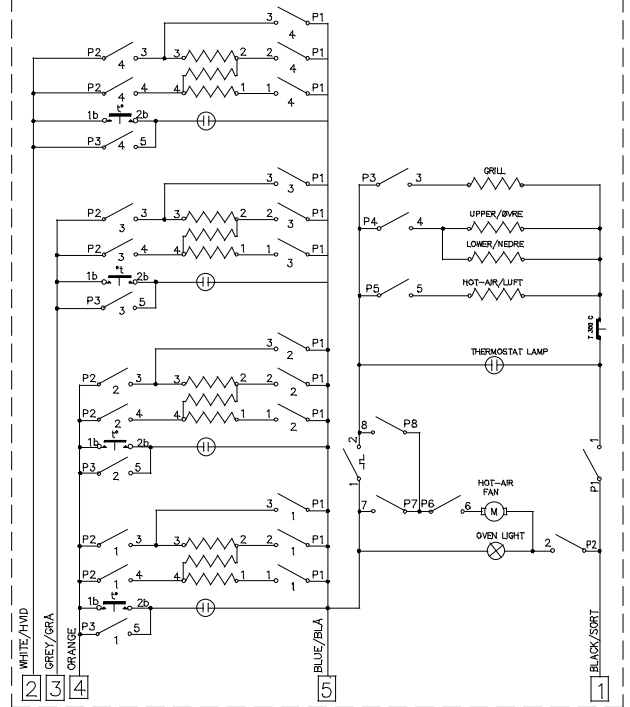
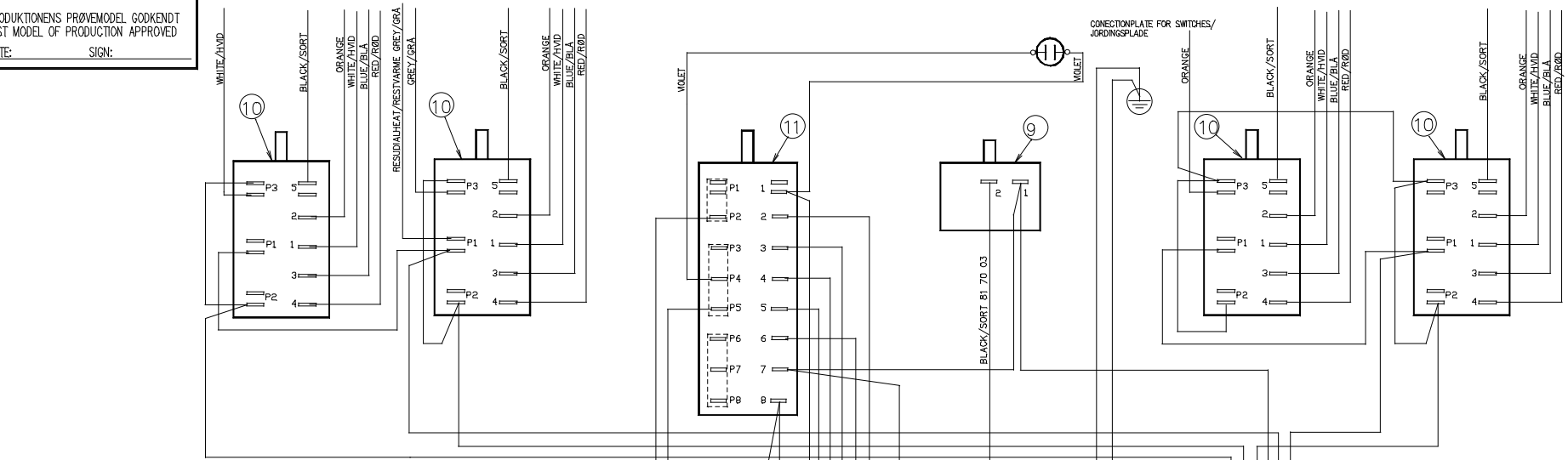


Items shown in this drawing must not be classified as restricted information without the express written permission of Electrolux Home Products Fredericia A/S. If you are not an authorized representative of Electrolux Home Products Fredericia A/S, you are not permitted to use this information for any purpose, and you are responsible for any damage or loss resulting from its use. This information is to be returned promptly to the originator. Electrolux Home Products Fredericia A/S is responsible for the drawing.

Items shown in this drawing must not be classified as restricted information without the express written permission of Electrolux Home Products Fredericia A/S. If you are not an authorized representative of Electrolux Home Products Fredericia A/S, you are not permitted to use this information for any purpose, and you are responsible for any damage or loss resulting from its use. This information is to be returned promptly to the originator. Electrolux Home Products Fredericia A/S is responsible for the drawing.

Critical dimensions which must be under capability
Visible surfaces
Draft angles (not shown).

PRODUKTIONENS PRØVEMODEL GODKENDT
TEST MODEL OF PRODUCTION APPROVED
DATE: _____ SIGN: _____



POS	ANT	GENSTAND	SCALE
19			
18			
17			
16			
15			
14	1	TOPPLATE DIAGRAM/OVERPLADE DIAGRAM	90 54 27
13	1	TOPPLATE DIAGRAM/OVERPLADE DIAGRAM	90 54 28
12	1	TOPPLATE DIAGRAM/OVERPLADE DIAGRAM	90 54 26
11	1	SWITCH F. HOTAIRØVEN/AFBRYDER LUFTØVN KL.A	
10	4	ENERGY REGUL./ØFBRYDER 7-TRIN RøHS	
9	1	OVEN THERMISTAT/THERMISTAT 320 ØR	
8	1	TERMINAL STRIP/LEDERKØRRE RøHS 6 PULS,SNAP	
7	1	OVEN LAMP TYP./ØVN LAMP TYP. GSN 230V	
6	1	FAN HOTAIR/VLMOTOR MES NG2002 230V RøHS	
5	1	THERMIFUSE/TERMISTIKRING 300 C	
4	1	HEATING ELEMENT RING/VARMELEG RøHS 1350W 230V	
3	1	HEATING ELEMENT ØVRE/ØVN ØVRE RøHS 1000W 230V	
2	1	HEATING ELEMENT ØNDR/ØVN ØNDR RøHS 2300W 230V	
1	1	HEATING ELEMENT ØNDR/VARMELEG RøHS 1000W 230V	

WIRINGSET/LEDNINGSSÆT PANEL: 325 80 56 90

TYPE: CSC400		
MODEL	PRODUCT NO.	TOPPLATE
ELK1823-hv	948.201.159	14: 905427
ELK1950-hv	948.201.160	13: 905428
ELK1817-hv	948.201.161	12: 905426
ELK1822-hv	948.201.162	14: 905427
ELK1825-hv	948.201.163	14: 905427

SWITCH F. HOTAIR OVEN CLASS A AFBRYDER F. LUFTØVN KLASSE A	1	2	3	4	5	6	7	8
	P1	P2	P3	P4	P5	P6	P7	P8
0								
3D HOT-AIR	1	X	X	X	X	X	X	X
TOP/BOTTOM HEAT	2	X	X	X	X	X	X	X
2D HOT-AIR ECONOMIC	3	X	X	X	X	X	X	X
FAN + GRILL	4	X	X	X	X	X	X	X
GRILL	5	X	X	X	X	X	X	X

MATERIAL	TREATMENT	DESIGN OWNER	DRN	HH	PB	DATE	2006-09-27
ORANGE WIRE NO. CHANGED/ORANGE LEDNING ØNDR REV. B	HH	PB	2006-11-05				
FIRST EDITION/FØRSTE UDGAVE REV. A	HH	PB	2006-09-27				



MODEL	SCALE	DESIGN USERS	REPLACES
	1:1	DKK	325 90 21 33
			DERIVED FROM
			SUPPLY SPECIFICATIONS
TITLE COOKER CERAMIC KERAMISK KOMFUR			
NUMBER	325 90 21 63	REV	B