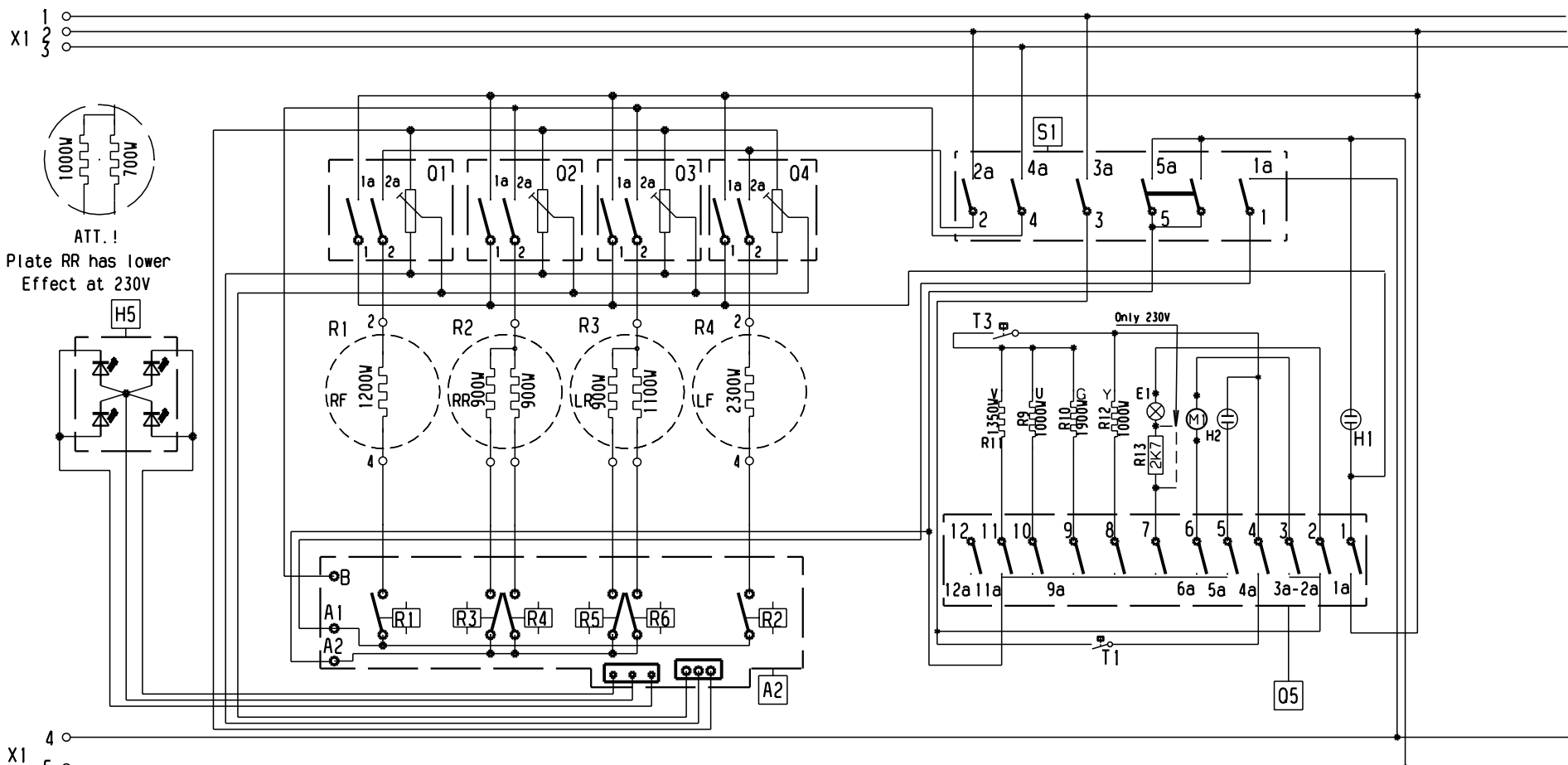
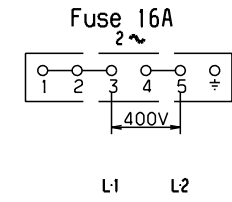
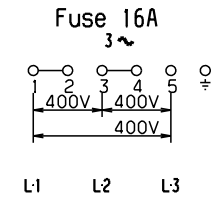
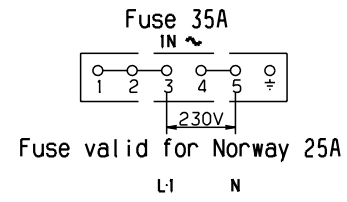
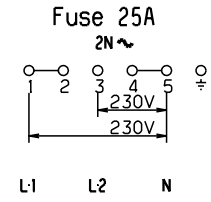
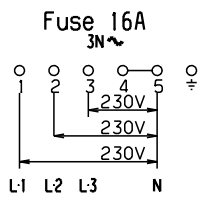


This drawing contains confidential information and is to be kept confidential. Without the permission of Electrolux, it may not be copied, shown or handed to a third party or otherwise used, and it is to be returned promptly upon request to the drafter. Which is responsible for the drawing.

[2] Critical dimensions which must be under capability SAFETY REQUIREMENT Visible surfaces: Draft angles (not shown).

THEORETICAL FLAT AREA ANGLES GENERAL TOLERANCES LENGTHS AND DIAMETERS DEVELOPED FLAT AREA



ATT. !
Plate RR has lower Effect at 230V

Schema gäller tom. serienr 134 pga. ändring av funktion för restvärmevisning

MO	0100515A	060201	010030
MO	0100515A	060201	010030

MATERIAL	-	DESIGN OWNER	DRN	CHD	-	DATE	01-03-08
TREATMENT	-	MO	S. Ahl	APPR	-		

MODEL	-	SCALE	-	EUROPEAN METHOD	
DESIGN USERS	-	REPLACES	No	DERIVED FROM	No
MO	-	SUPPLY SPECIFICATIONS	No		

Electrolux

TITLE Principel diagram
NUMBER 305 29 95 sh3 REV A