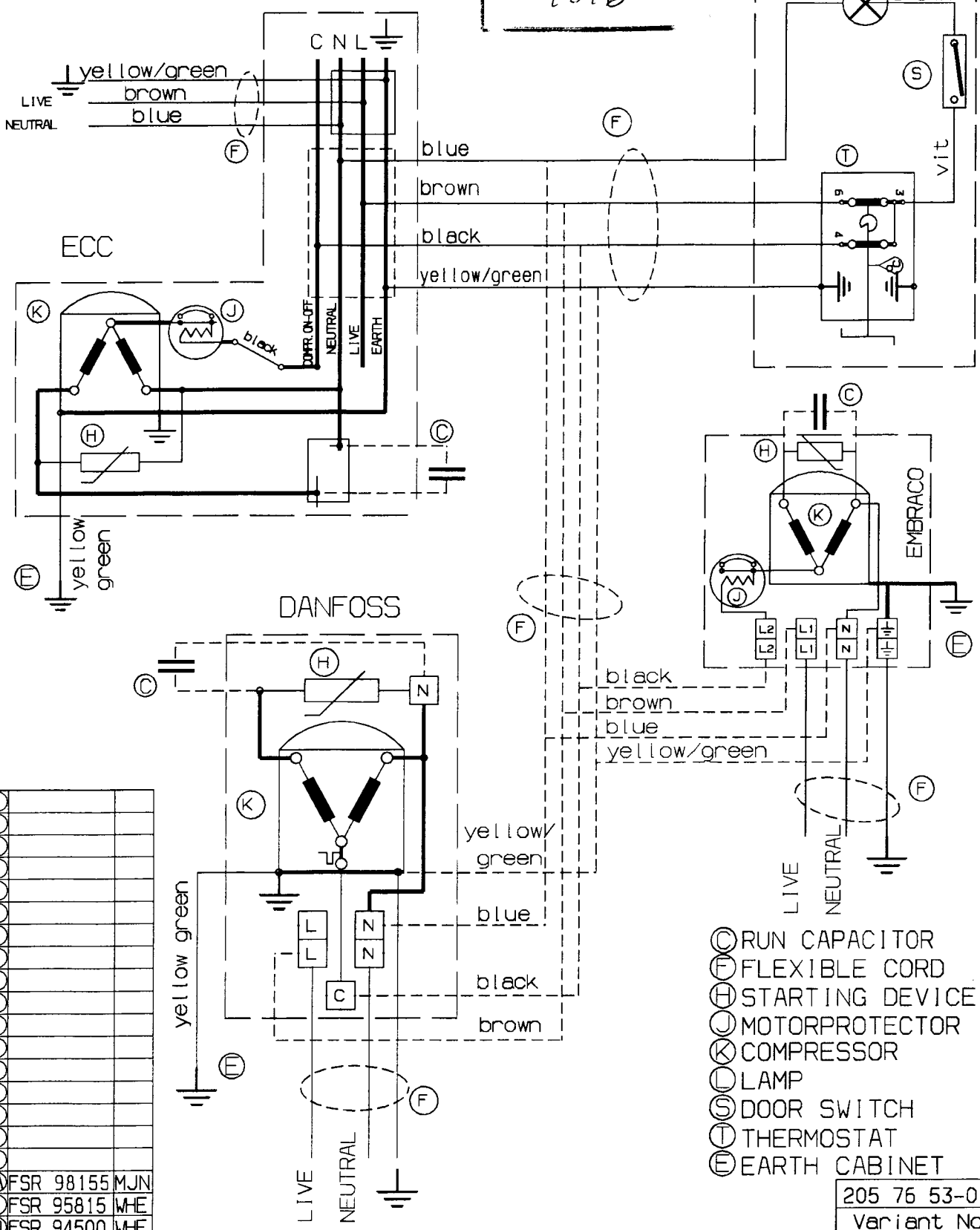


THE ITEM(S) SHOWN IN THIS DRAWING MUST NOT CONTAIN FORMALDEHYDE, CADMIUM OR ASBESTOS.

THIS DRAWING CONTAINS CONFIDENTIAL INFORMATION and is the property of AB ELECTROLUX, SWEDEN without whose permission may not be copied, shown or handed to a third party, or otherwise used, and it is to be returned promptly upon request to the AB Electrolux, Marrestad plant which is responsible for the drawing.

2] Critical dimensions which must be under capability SAFETY REQUIREMENT
 --- Visible surfaces.
 Draft angles (not shown):

Callen prod. FR.O.M.
 9816



- Ⓢ RUN CAPACITOR
- Ⓡ FLEXIBLE CORD
- Ⓜ STARTING DEVICE
- Ⓜ MOTORPROTECTOR
- Ⓚ COMPRESSOR
- Ⓛ LAMP
- Ⓢ DOOR SWITCH
- Ⓣ THERMOSTAT
- Ⓧ EARTH CABINET

FSR 98155	MJN
FSR 95815	WHE
FSR 94500	WHE

205 76 53-01
 Variant No.

MATERIAL		WEIGHT	
TREATMENT		DESIGN OWNER	
MA	WHE	CHD	DATE
		APPR	93.06.10

MODEL 35	SCALE	EUROPEAN METHOD
DESIGN USERS	REPLACES NO	
	DERIVED FROM NO	
	SUPPLY SPECIFICATIONS NO	

Electrolux

TITLE	Wiring diagram Kopplingschema	REV	A
NUMBER	205 76 53		