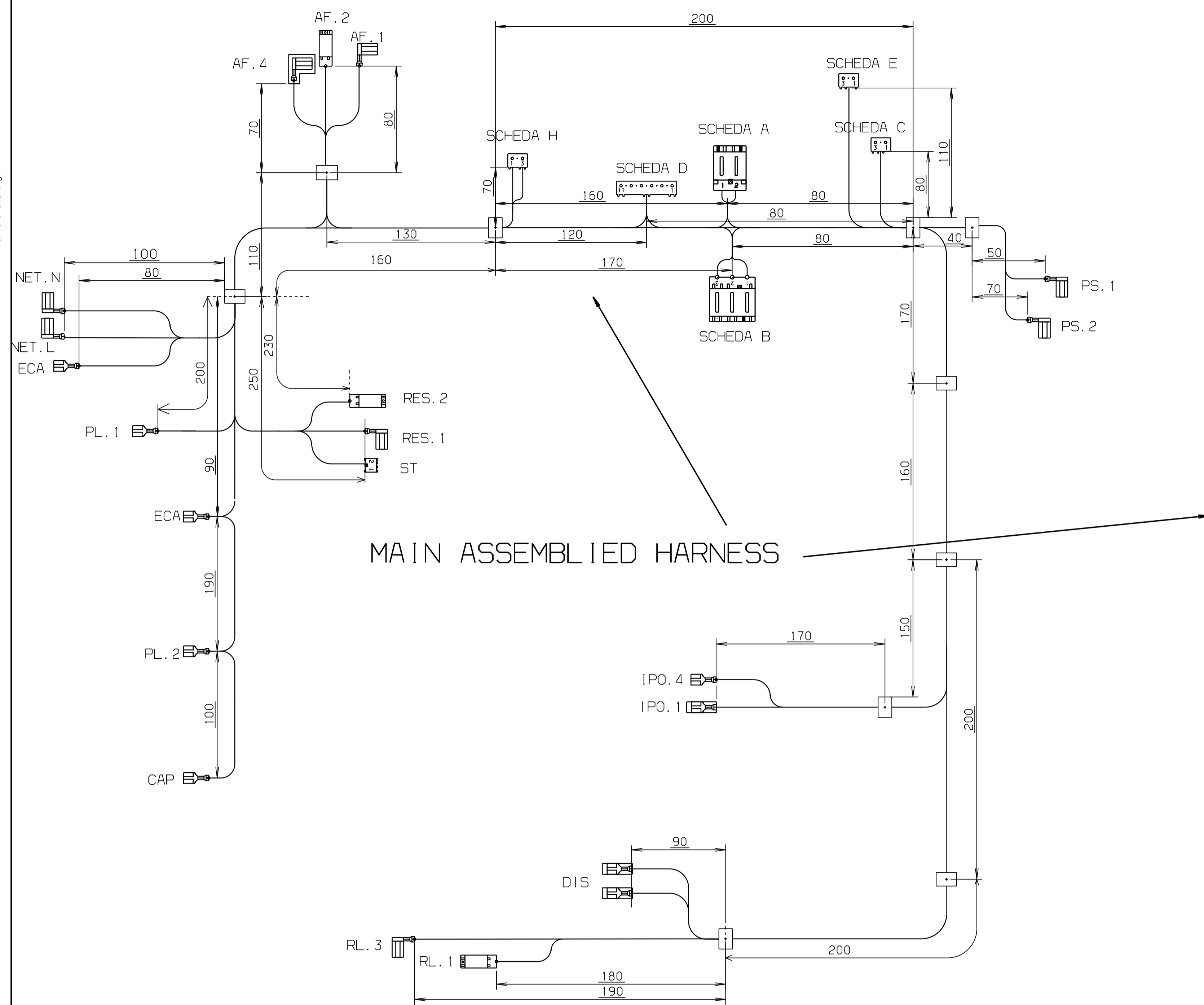
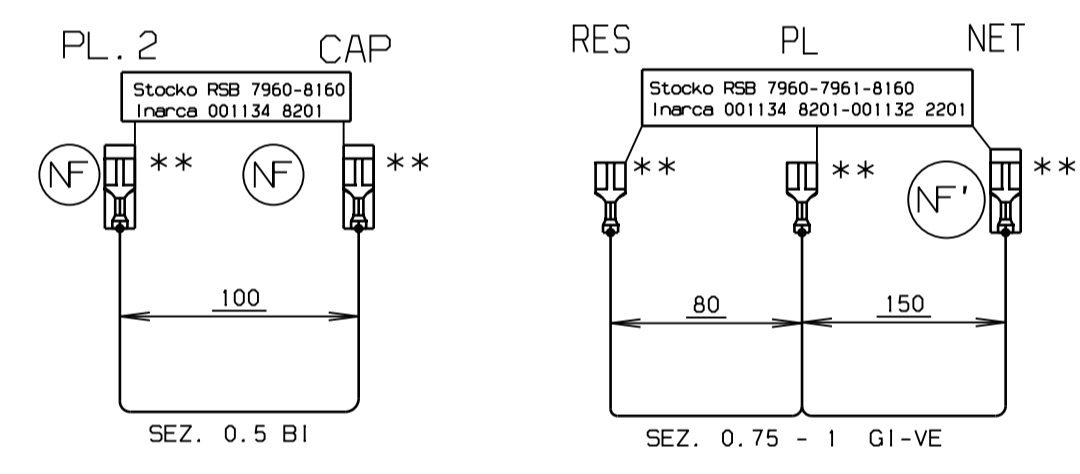
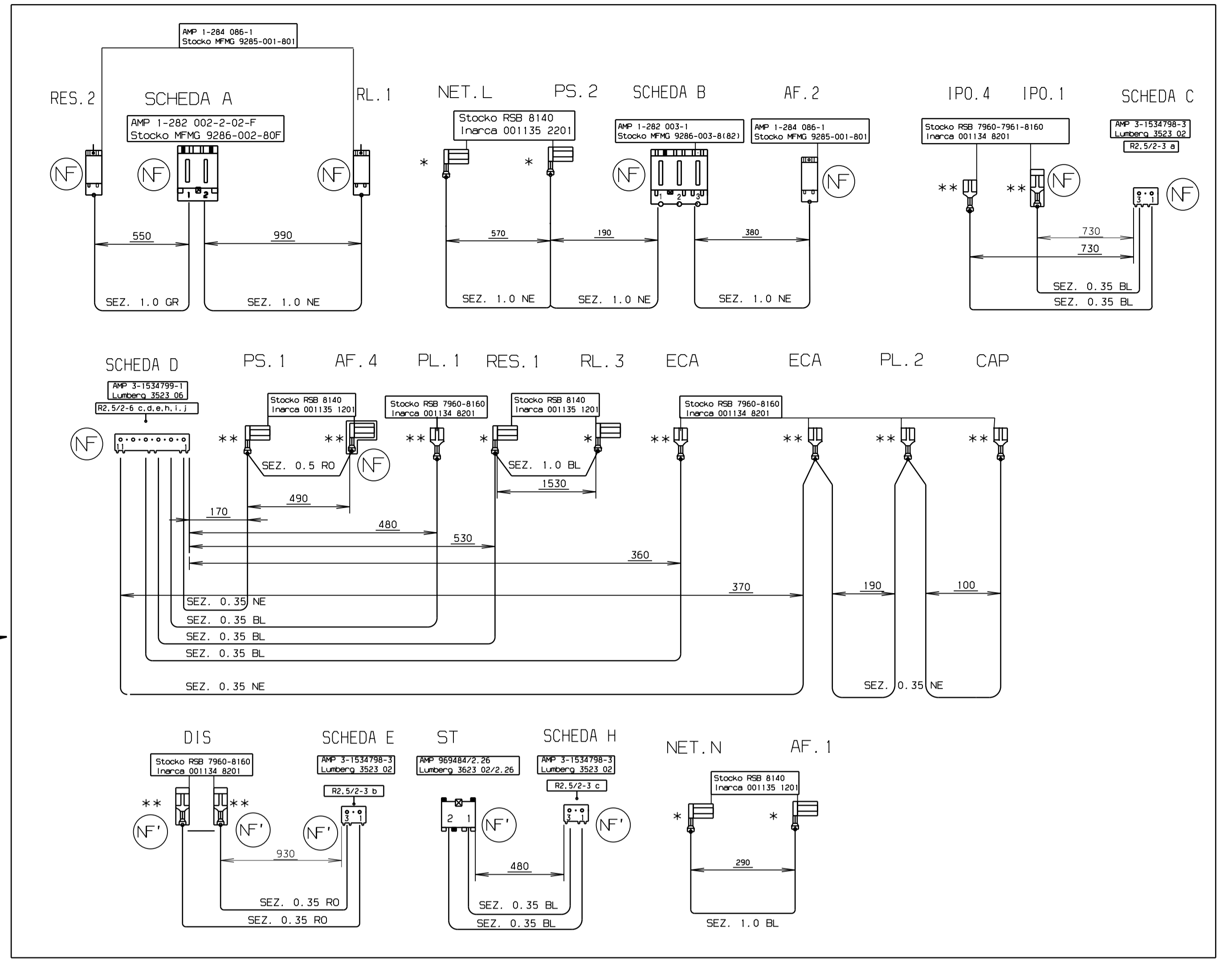


This drawing contains confidential information and its use is restricted to the project for which it was prepared. It may not be copied, shown or handed to a third party without the prior written consent of the design owner, who is responsible for the drawing.



MAIN ASSEMBLED HARNESS



INFO:

The variant codes are made by three separated harness. The main assembled one plus two wires (PL.2-CAP and RES-PL-NET). All of them have to be inserted in to the same plastic bag.

LEGENDA:

- * - Brass tin plated
- ** - Brass with or without tin plated
- (NF) Insulation housing, Glow-wire 650°C without flame according IEC 60335-1 Clause 30
- (NF) Insulation housing, Glow-wire 750°C without flame according IEC 60335-1 Clause 30
- ▬ Keying rib
- Eliminated keying rib

LEGGENDA SIMBOLI

- Faston femmina 2.8
Female Faston 2.8
- Faston femmina 6.3
Female faston 6.3
- Faston occhio
Eye faston
- Faston femmina con coprifaston
Female Faston with Protection
- Faston bandiera ANTISIFILAMENTO
Antislipping Flag Faston
- Faston maschio/femmina Standard Pg-back Faston
Standard Pg-back Faston
- Contatto timer per connettore Connector's timer contact
- Faston femmina antisifilamento
Antislipping Female Faston
- Faston femmina antisifilamento con coprifaston
Antislipping Female Faston with protection

NOTA

IL CABLAGGIO DEVE ESSERE FORNITO COME DA PRESCRIZIONE
Harness must be supplied due to prescription
CD. 152.279.50/ (IMBALLAGGIO CON NASTRO IN CARTA)

AR	ARANCIO ORANGE
BI	BIANCO WHITE
BL	BLAU BLUE
CE	CELESTE LIGHT BLUE
GI-VE	GIALLO-VERDE YELLOW-GREEN
MA	MARRONE BROWN
NE	NERO BLACK
RO	ROSSO RED
VI	VIOLETTA VIOLET
GR	GRIGIO GREY

Items shown in this drawing must not contain substances listed in Annex 1 of the RoHS Directive (Lead, Cadmium, Mercury, Hexavalent Chromium, PBB and PBDE), or substances classified as "Banned" or "Restricted" according to the ElectroLux Restricted Materials List.

IL NUMERO O LE LETTERE TRA PARENTESI VICINO AL TERMINALE. SI RIFERISCONO ALLA MARCHIATURA DA PREVEDERE SUL CAVO
Referred to needed mark on wiring

LUNGHEZZA CAVETTI ESPRESSA IN MILLIMETRI CON TOLLERANZA
Wire lenght displayed in millimeter with cut
DI TAGLIO : +15-0
tolerance : +15-0

WIRE CHARACTERISTICS:
MATERIAL :-- CABLE min H03-V2-K 70-90 °C

B New layout of the wires to NET.L and AF.2		Sowicz		02/11/06
A FIRST EMISSION		Sowicz		19/09/06
POS	MODIFICATIONS	SIGNATURE	REQUEST	DATE
MATERIAL		DESIGN USERS	SCALE	EUROPEAN METHOD
TREATMENT	WEIGHT	PLV	REPLACES	
DESIGN OWNER	ORN Sowicz	CND	EDW 503 CD	DERIVED FROM
DATE	19/09/06	APPN	AUSTRALIA	SUPPLY SPECIFICATIONS
			TITLE	CSS2091
			CABLAGGIO ASSIEMATO DIVA	
			Diva Wire Harness	
			NUMBER	156.021.6
			REV	B
			SHEET	

156.021.60/1	Base Main	PLV	Particolare rappresentato a disegno Variant number shown in the drawing
VARIANT NUMBER	MODEL	DESIGN USERS	CHANGINGS FROM THE BASIC NUMBER

