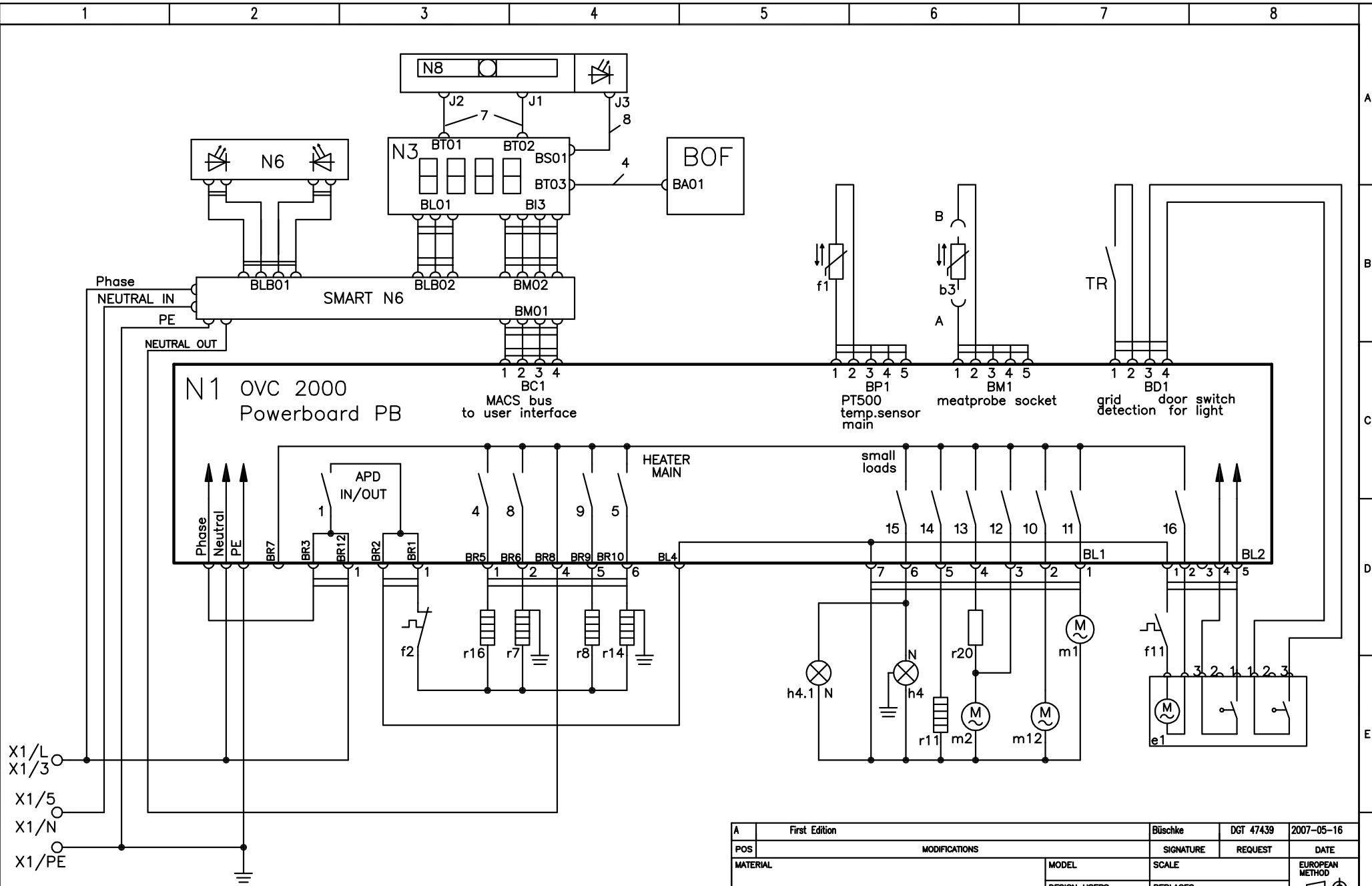


This drawing contains confidential information and is the property of Electrolux. Without the express written permission of Electrolux, this drawing or any part thereof may not be reproduced, stored in a retrieval system, or otherwise used, and it is to be returned promptly upon request to the design owner, who is responsible for the drawing.

Items shown in this drawing must not contain substances that are banned according to Directive 2002/95/EC, the RoHS Directive (Lead, Cadmium, Mercury, hexavalent Chromium, PBB and PBDE), or substances classified as "banned" or "Restricted" according to the Electrolux Restricted Materials List.



GENERAL TOLERANCES
ANGLES
LENGTHS AND DIAMETERS

VARIANT NUMBER.	REPLACED NUMBER	POS.	MODEL	DESIGN USERS	CHANGES FROM THE BASE NUMBER

A		First Edition			Büschke	DGT 47439	2007-05-16
POS		MODIFICATIONS			SIGNATURE	REQUEST	DATE
MATERIAL		MODEL			SCALE		EUROPEAN METHOD
TREATMENT		DESIGN USERS			REPLACES No		
DESIGN OWNER		DRN			DERIVED FROM No		
DGT		DATE 2007-05-16			SUPPLY SPECIFICATIONS No		
CHD Büschke		2D ONLY			TITLE circuit diagram		
APPR Büschke		CONCEPT 3D			Schaltplan		
EXACT 3D					NUMBER 387 4816		
					REV A		
					SHEET 1/1		

